

LEVELING FEET

STEEL: 12L14, CARBURIZED-HARDENED (BODY ONLY), ZINC PLATED YELLOW CHROMATE OR BLACK OXIDE FINISH
STAINLESS STEEL: 300 SERIES. DELRIN® PAD: WHITE DELRIN® 500.



**Steel
Zinc Plated**



**Steel
Zinc Plated
with Delrin® Pad**



**Steel
Black Oxide
Finish**



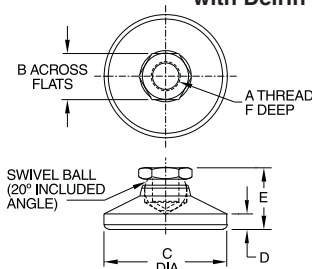
Stainless Steel



**Stainless Steel
with Delrin® Pad**

**ADDITIONAL
SIZES NOW
AVAILABLE!**

High-quality, heavy-duty leveling foot with large-diameter pad. Large ball provides high load capacity with a 20° total swivel angle.



USA

PART NO. STEEL ZINC PLATED	PART NO. STEEL ZINC PLATED DELRIN® PAD	PART NO. STEEL BLACK OXIDE	PART NO. STAINLESS	PART NO. STAINLESS DELRIN® PAD	A	B	C DIA	D	E	F	LOAD RATING (LBS)*	
											STEEL & STAINLESS	DELRIN®
CL-3-LF	CL-3-LFN	CL-3-LF-BO	CL-3-LF-S	CL-3-LFN-S	#10-32	3/8	3/4	7/64	17/32	1/4	700	150
CL-4-LF	CL-4-LFN	CL-4-LF-BO	CL-4-LF-S	CL-4-LFN-S	1/4-20	1/2	1	5/32	45/64	5/16	1,000	200
CL-5-LF	CL-5-LFN	CL-5-LF-BO	CL-5-LF-S	CL-5-LFN-S	5/16-18	9/16	1-1/8	3/16	3/16	3/8	1,500	250
CL-6-LF	CL-6-LFN	CL-6-LF-BO	CL-6-LF-S	CL-6-LFN-S	3/8-16	5/8	1-1/4	3/16	7/8	13/32	2,300	300
CL-8-LF	CL-8-LFN	CL-8-LF-BO	CL-8-LF-S	CL-8-LFN-S	1/2-13	3/4	1-7/8	1/4	1-1/8	1/2	4,200	700
CL-10-LF	CL-10-LFN	CL-10-LF-BO	CL-10-LF-S	CL-10-LFN-S	5/8-11	15/16	2-1/2	5/16	1-1/4	1/2	6,600	1,200
CL-12-LF	CL-12-LFN	CL-12-LF-BO	CL-12-LF-S	CL-12-LFN-S	3/4-10	1-1/8	3	1/2	1-1/2	5/8	10,000	1,800
CL-16-LF	—	CL-16-LF-BO	CL-16-LF-S	—	1"-8	1-1/2	4	13/32	1-7/8	15/16	18,000	—

METRIC

CLM-6-LF	CLM-6-LFN	CLM-6-LF-BO	CLM-6-LF-S	CLM-6-LFN-S	M6	10mm	1	5/32	45/64	5/16	900	180
CLM-8-LF	CLM-8-LFN	CLM-8-LF-BO	CLM-8-LF-S	CLM-8-LFN-S	M8	13mm	1-1/8	3/16	13/16	3/8	1,500	250
CLM-10-LF	CLM-10-LFN	CLM-10-LF-BO	CLM-10-LF-S	CLM-10-LFN-S	M10	17mm	1-1/4	3/16	7/8	13/32	2,600	300
CLM-12-LF	CLM-12-LFN	CLM-12-LF-BO	CLM-12-LF-S	CLM-12-LFN-S	M12	19mm	1-7/8	1/4	1-1/8	1/2	3,800	700
CLM-16-LF	CLM-16-LFN	CLM-16-LF-BO	CLM-16-LF-S	CLM-16-LFN-S	M16	24mm	2-1/2	5/16	1-1/4	1/2	7,200	1,200
CLM-20-LF	CLM-20-LFN	CLM-20-LF-BO	CLM-20-LF-S	CLM-20-LFN-S	M20	30mm	3	1/2	1-1/2	5/8	11,000	1,800

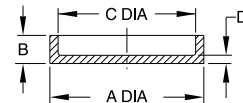
*Safe static load with stud securely mounted in a plate at least one-stud-diameter thick, at maximum stud extension (2:1 safety factor). Leveling Feet are rated with the same-length stud as on Stud Leveling Feet. Load capacity will drop significantly with longer studs.



Rubber Pad Covers
for Leveling Feet



Rubber Pad Covers fit over the bottom of Leveling Feet. These pad covers provide increased gripping to prevent sliding on sloped or uneven surfaces. They reduce walking and transmitted machine vibrations. Durable PVC material. Note: load capacity will be reduced with Rubber Pad Covers. See table below.



RUBBER PAD COVERS

PART NO.	FITS LEVELING FEET	A DIA	B	C DIA	D	LOAD RATING (LBS)
CL-6-RPC	3/8-16 and M10	1-1/2	3/8	1-1/4	1/8	300
CL-8-RPC	1/2-13 and M12	2-1/8	3/8	1-7/8		700
CL-10-RPC	5/8-11 and M16	2-3/4	7/16	2-1/2		1,200
CL-12-RPC	3/4-10 and M20	3-1/4	1/2	3		1,800

STUD LEVELING FEET

STEEL: 12L14, CARBURIZED-HARDENED (BODY ONLY), ZINC PLATED YELLOW CHROMATE OR BLACK OXIDE FINISH
STAINLESS STEEL: 300 SERIES. DELRIN® PAD: WHITE DELRIN® 500.



**Steel
Zinc Plated**

**Steel
Zinc Plated
with Delrin® Pad**

**Steel
Black Oxide Finish**

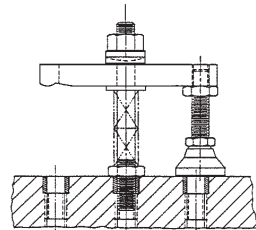
Stainless Steel

**Stainless Steel
with Delrin® Pad**

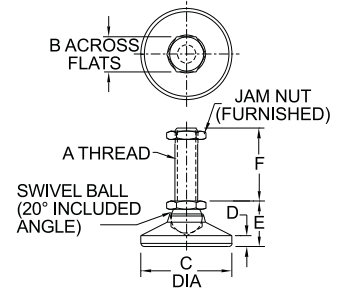
High-quality, heavy-duty leveling foot with large-diameter pad and integral stud. Stud and ball are one solid piece. Large ball provides high load capacity with a 20° total swivel angle.

* Safe static load with stud securely mounted in a plate at least one-stud-diameter thick, at maximum stud extension (2:1 safety factor). Load capacity will drop significantly with longer studs.

**ADDITIONAL
SIZES NOW
AVAILABLE!**



Can also be used as a clamp rest for Tapped-Heel Clamp Straps.



USA

PART NO. STEEL ZINC PLATED	PART NO. STEEL ZINC PLATED DELRIN® PAD	PART NO. STEEL BLACK OXIDE	PART NO. STAINLESS	PART NO. STAINLESS DELRIN® PAD	A	B	C DIA	D	E	F	LOAD RATING (LBS)*	
											STEEL & STAINLESS	DELRIN®
CL-3-SLF	CL-3-SLFN	CL-3-SLF-BO	CL-3-SLF-S	CL-3-SLFN-S	#10-32	3/8	3/4	7/64	17/32	1	700	150
CL-3-SLF-2	CL-3-SLFN-2	CL-3-SLF-2-BO	CL-3-SLF-2-S	CL-3-SLFN-2-S						2	200	
CL-4-SLF	CL-4-SLFN	CL-4-SLF-BO	CL-4-SLF-S	CL-4-SLFN-S	1/4-20	1/2	1	5/32	45/64	1-1/4	1,000	200
CL-4-SLF-2.5	CL-4-SLFN-2.5	CL-4-SLF-2.5-BO	CL-4-SLF-2.5-S	CL-4-SLFN-2.5-S						2-1/2	250	
CL-5-SLF	CL-5-SLFN	CL-5-SLF-BO	CL-5-SLF-S	CL-5-SLFN-S	5/16-18	9/16	1-1/8	3/16	13/16	2	1,500	250
CL-5-SLF-4	CL-5-SLFN-4	CL-5-SLF-4-BO	CL-5-SLF-4-S	CL-5-SLFN-4-S						4	400	
CL-6-SLF	CL-6-SLFN	CL-6-SLF-BO	CL-6-SLF-S	CL-6-SLFN-S	3/8-16	5/8	1-1/4	3/16	7/8	2	2,300	300
CL-6-SLF-4	CL-6-SLFN-4	CL-6-SLF-4-BO	CL-6-SLF-4-S	CL-6-SLFN-4-S						4	600	
CL-8-SLF	CL-8-SLFN	CL-8-SLF-BO	CL-8-SLF-S	CL-8-SLFN-S	1/2-13	3/4	1-7/8	1/4	1-1/8	2	4,200	700
CL-8-SLF-4	CL-8-SLFN-4	CL-8-SLF-4-BO	CL-8-SLF-4-S	CL-8-SLFN-4-S						4	1,100	
CL-10-SLF	CL-10-SLFN	CL-10-SLF-BO	CL-10-SLF-S	CL-10-SLFN-S	5/8-11	15/16	2-1/2	5/16	1-1/4	2	6,600	1,200
CL-10-SLF-4	CL-10-SLFN-4	CL-10-SLF-2-BO	CL-10-SLF-4-S	CL-10-SLFN-4-S						4	1,700	
CL-12-SLF	CL-12-SLFN	CL-12-SLF-BO	CL-12-SLF-S	CL-12-SLFN-S	3/4-10	1-1/8	3	1/2	1-1/2	2	10,000	1,800
CL-12-SLF-4	CL-12-SLFN-4	CL-12-SLF-2-BO	CL-12-SLF-4-S	CL-12-SLFN-4-S						4	2,500	
CL-16-SLF	—	CL-16-SLF-BO	CL-16-SLF-S	—	1"-8	1-1/2	4	13/32	1-7/8	4-1/4	18,000	—
CL-16-SLF-8	—	CL-16-SLF-8-BO	CL-16-SLF-8-S	—						8	4,500	

METRIC

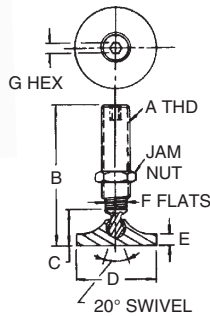
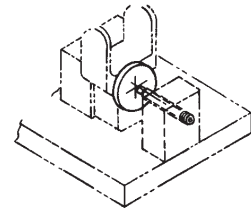
CLM-6-SLF	CLM-6-SLFN	CLM-6-SLF-BO	CLM-6-SLF-S	CLM-6-SLFN-S	M6	10mm	1	5/32	45/64	1.57	900	180
CLM-8-SLF	CLM-8-SLFN	CLM-8-SLF-BO	CLM-8-SLF-S	CLM-8-SLFN-S	M8	13mm	1-1/8	3/16	13/16	1.97	1,500	250
CLM-10-SLF	CLM-10-SLFN	CLM-10-SLF-BO	CLM-10-SLF-S	CLM-10-SLFN-S	M10	17mm	1-1/4	3/16	7/8	2	2,600	300
CLM-12-SLF	CLM-12-SLFN	CLM-12-SLF-BO	CLM-12-SLF-S	CLM-12-SLFN-S	M12	19mm	1-7/8	1/4	1-1/8		3,800	700
CLM-16-SLF	CLM-16-SLFN	CLM-16-SLF-BO	CLM-16-SLF-S	CLM-16-SLFN-S	M16	24mm	2-1/2	5/16	1-1/4	7,200	1,200	
CLM-20-SLF	CLM-20-SLFN	CLM-20-SLF-BO	CLM-20-SLF-S	CLM-20-SLFN-S	M20	30mm	3	1/2	1-1/2	11,000	1,800	

JIG FEET LEVELING

PATENT NO. 2,531,892
SCREW: 12L14 STEEL, CARBURIZED-HARDENED, ZINC PLATED YELLOW CHROMATE
FOOT: 12L14 STEEL, ZINC PLATED YELLOW CHROMATE



Medium-duty leveling foot with removable pad. Lefthand thread in pad prevents backout while pad rotates and pivots freely.



USA

PART NO.	A	B	C	D DIA	E	F	G	*LOAD RATING (LBS)
CL-1-JFL	1/2-13	2-7/32	7/8	1-1/2	1/4	3/8	1/4	1,400
CL-2-JFL		4-7/32						430
CL-3-JFL	5/8-11	3-1/4	29/32	2	5/16	1/2	5/16	2,900
CL-4-JFL		5-1/4						1,200
CL-5A-JFL	3/4-10	3-1/2	1-1/16	2-1/2	3/8	9/16	3/8	3,700
CL-6-JFL		5-17/32						1,800
CL-7A-JFL	1-8	3-1/2	1-19/32	3-1/2	1/2	3/4	1/2	6,700
CL-8-JFL		5-19/32						6,400

METRIC

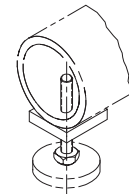
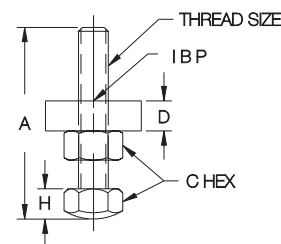
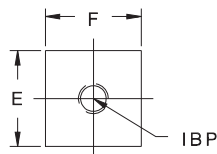
CLM-1-JFL	M12	2.17	.87	1-1/2	1/4	10mm	6mm	1,400
CLM-2-JFL		4.33						430
CLM-3-JFL	M16	3.35	.91	2	5/16	13mm	8mm	2,900
CLM-4-JFL		5.31						1,200
CLM-5A-JFL	M20	3.54	1.06	2-1/2	3/8	17mm	10mm	3,700
CLM-6-JFL		5.51						1,800
CLM-7A-JFL	M24	3.54	1.61	3-1/2	1/2	19mm	12mm	6,700
CLM-8-JFL		5.71						6,400

JIG FEET LEVELING ASSEMBLIES

MILD STEEL, BLACK OXIDE FINISH



Complete leveling assembly includes radius-head screw, plate, and hex nut.



USA

PART NO.	THREAD SIZE	A	C	D	E	F	H	*LOAD RATING (LBS)
CL-1-JF	3/8-16	3	11/16	1/2	1-1/2	1-3/4	.42	2,300
CL-2-JF	1/2-13	4	7/8		1-3/4	2	.53	4,200
CL-3-JF	5/8-11	4	1-1/16	5/8	2	2	.63	6,600
CL-4-JF	3/4-10		1-1/4				.75	10,000
CL-5-JF	1-8	5	1-5/8	3/4			1.06	18,000

METRIC

CLM-10-JF	M10	2.95	17mm	1/2	1-1/2	1-3/4	.43	2,600
CLM-12-JF	M12	3.94	19mm		1-3/4	2	.55	3,800
CLM-16-JF	M16	3.94	24mm	5/8	2	2	.63	7,200
CLM-20-JF	M20		30mm	.75			11,000	
CLM-24-JF	M24	5.12	36mm	3/4			1.06	16,000

* Safe static load with stud securely mounted in a plate at least one-stud-diameter thick, at maximum stud extension (2:1 safety factor). Jig Feet Leveling Assemblies are rated with the standard plate provided.