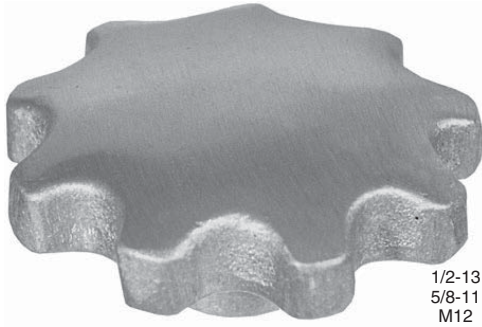
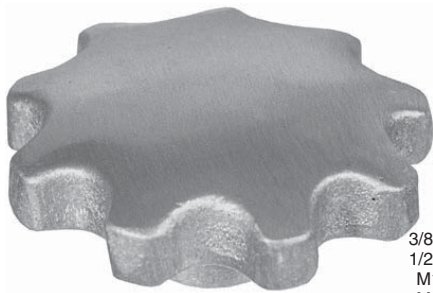


PALM-GRIP HAND KNOBS

319 ALUMINUM ALLOY

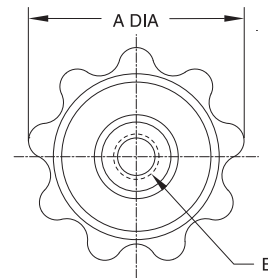
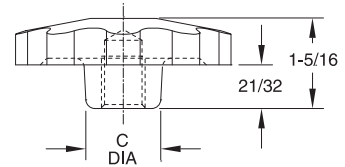


1/2-13
5/8-11
M12
M16



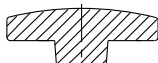
3/8-16
1/2-13
M10
M12

Polished full-grip hand knob. Choose from two knob sizes, each available blank, tapped or reamed. Note: catalog photos are actual size.



USA & METRIC

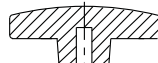
PART NO.	A DIA	C DIA	HOLE TYPE	B
CL-11-PHK	2-3/4	1	BLANK	—
CL-13-PHK			TAPPED	3/8-16 X 3/4 DEEP
CL-14-PHK			TAPPED	1/2-13 X 3/4 DEEP
CLM-13-PHK			TAPPED	M10 X 3/4 DEEP
CLM-14-PHK			TAPPED	M12 X 3/4 DEEP
CL-12-PHK			REAMED	3/8 X 7/8 DEEP
CL-15-PHK			REAMED	1/2 X 7/8 DEEP
CLM-12-PHK			REAMED	10mm X 7/8 DEEP
CLM-15-PHK			REAMED	12mm X 7/8 DEEP
CL-21-PHK			3-1/8	1
CL-23-PHK	TAPPED	1/2-13 X 3/4 DEEP		
CL-24-PHK	TAPPED	5/8-11 X 3/4 DEEP		
CLM-23-PHK	TAPPED	M12 X 3/4 DEEP		
CLM-24-PHK	TAPPED	M16 X 3/4 DEEP		
CL-22-PHK	REAMED	1/2 X 7/8 DEEP		
CL-25-PHK	REAMED	5/8 X 1 DEEP		
CLM-22-PHK	REAMED	12mm X 7/8 DEEP		
CLM-25-PHK	REAMED	16mm X 1 DEEP		



Blank



Tapped



Reamed

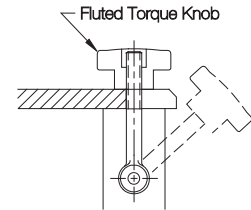
FLUTED KNOBS

BLACK PHENOLIC PLASTIC OR THERMOPLASTIC WITH BRASS INSERT

Phenolic — Tapped



Large easy-grip knob that is excellent for either fine-adjustment or high-torque applications. Molded-in brass insert provides superior thread strength. Choice of four knob sizes. Non-standard thread sizes, reamed holes, or molded-in studs are available in quantities of 500 and above. Note: Catalog photos are actual size.



1/2-13 CL-88-PFK
5/8-11 CL-810-PFK

Phenolic — Tapped Through Hole



3/8-16 CL-660-PFK

Phenolic — Tapped Short Hub



3/8-16 CL-666-PFK



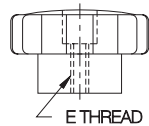
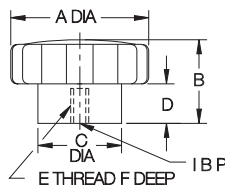
3/8-16 CL-66-PFK
1/2-13 CL-68-PFK
M12 CLM-612-PFK



1/4-20 CL-44-PFK
5/16-18 CL-45-PFK
3/8-16 CL-46-PFK
M8 CLM-48-PFK
M10 CLM-410-PFK



5/16-18 CL-450-PFK



#10-32 CL-23-PFK
1/4-20 CL-24-PFK
5/16-18 CL-25-PFK
M6 CLM-26-PFK

PHENOLIC — TAPPED (USA & METRIC)

PART NO.	A DIA	B	C DIA	D	E	F
CL-23-PFK	1-3/8	27/32	27/32	25/64	#10-32	5/16
CL-24-PFK					1/4-20	
CL-25-PFK					5/16-18	
CLM-26-PFK	1-3/4	1-1/16	1-1/16	1/2	M6	7/16
CL-44-PFK					1/4-20	
CL-45-PFK					5/16-18	
CL-46-PFK	2-3/8	1-5/16	1-1/4	5/8	3/8-16	1/2
CLM-48-PFK					M8	
CLM-410-PFK					M10	
CL-66-PFK	3-1/4	1-25/32	2	7/8	3/8-16	5/8
CL-68-PFK					1/2-13	
CLM-612-PFK					M12	
CL-88-PFK	3-1/4	1-25/32	2	7/8	1/2-13	3/4
CL-810-PFK					5/8-11	

PHENOLIC — TAPPED THROUGH HOLE (USA)

CL-450-PFK	1-3/4	61/64	1-1/16	1/2	5/16-18	5/8
CL-660-PFK	2-3/8	1-9/32	1-1/4	5/8	3/8-16	5/8

PHENOLIC — TAPPED, SHORT HUB (USA)

CL-466-PFK	1-3/4	11/16	3/4	1/8	3/8-16	3/8
CL-666-PFK	2-3/8	13/16	3/4	1/8	3/8-16	1/2

FLUTED KNOBS

BLACK THERMOPLASTIC OR PHENOLIC PLASTIC WITH BRASS INSERT

Thermoplastic — Tapped



5/16-18 CL-750-PFK
3/8-16 CL-760-PFK

Thermoplastic version of the Fluted Knobs on page 82, with a textured non-slip, non-glare finish. Choice of three knob sizes. Molded-in brass insert provides superior thread strength. Non-standard thread sizes, reamed holes, molded-in studs, or special colors are available in quantities of 500 and above. Note: Catalog photos are actual size.

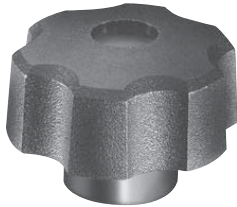
Thermoplastic — Tapped Through Hole



5/16-18 CL-550-PFK
3/8-16 CL-560-PFK



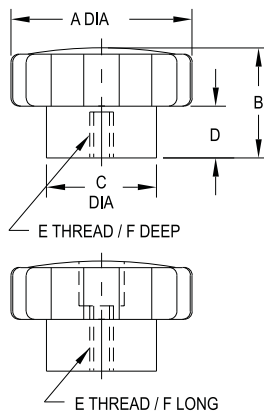
5/16-18 CL-551-PFK
3/8-16 CL-561-PFK



1/4-20 CL-340-PFK
5/16-18 CL-350-PFK



1/4-20 CL-341-PFK
5/16-18 CL-351-PFK



THERMOPLASTIC — TAPPED

PART NO.	A DIA	B	C DIA	D	E	F
CL-340-PFK	1-1/2	1	3/4	3/8	1/4-20	5/8
CL-350-PFK					5/16-18	
CL-550-PFK	2-5/32	1-1/8	3/4	3/8	5/16-18	3/4
CL-560-PFK					3/8-16	
CL-750-PFK	3-1/4	1-5/8	2	3/4	5/16-18	3/4
CL-760-PFK					3/8-16	

THERMOPLASTIC — TAPPED THROUGH HOLE

CL-341-PFK	1-1/2	1	3/4	3/8	1/4-20	5/8
CL-351-PFK					5/16-18	
CL-551-PFK	2-5/32	1-1/8	3/4	3/8	5/16-18	7/8
CL-561-PFK					3/8-16	

STAR KNOBS

BLACK THERMOPLASTIC OR CUSHION-GRIP PLASTIC
WITH BRASS INSERT

Thermoplastic — Tapped



1/4-20 CL-632-SK
5/16-18 CL-642-SK
3/8-16 CL-652-SK

Thermoplastic — Tapped Through Hole



1/4-20 CL-636-SK
5/16-18 CL-646-SK
3/8-16 CL-656-SK

Cushion Grip — Tapped



5/16-18 CL-755-SK
3/8-16 CL-765-SK

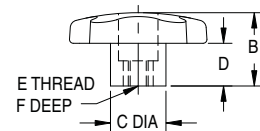
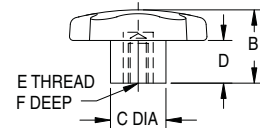
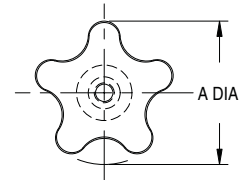


1/4-20 CL-545-SK
5/16-18 CL-555-SK
3/8-16 CL-565-SK



1/4-20 CL-345-SK
5/16-18 CL-355-SK

Star Knobs have five lobes to provide a firm, sure grip for applications requiring quick tightening and high torque. Smooth, rounded lobes prevent snagging. Thermoplastic version has a textured, non-slip, non-glare finish. Cushion-Grip version is made from a unique material that feels soft to the touch, comfortable yet rugged. Molded-in brass insert provides superior thread strength. Non-standard thread sizes, reamed holes, molded-in studs, or special colors are available in quantities of 500 and above. Note: Catalog photos are actual size.



THERMOPLASTIC — TAPPED

PART NO.	A DIA	B	C DIA	D	E	F
CL-632-SK					1/4-20	1/2
CL-642-SK	2-1/4	1	7/8	1/2	5/16-18	5/8
CL-652-SK					3/8-16	1/2

THERMOPLASTIC — TAPPED THROUGH HOLE

PART NO.	A DIA	B	C DIA	D	E	F
CL-636-SK					1/4-20	
CL-646-SK	2-1/4	1	7/8	1/2	5/16-18	5/8
CL-656-SK					3/8-16	

CUSHION GRIP — TAPPED

PART NO.	A DIA	B	C DIA	D	E	F
CL-345-SK	1-1/2	1-3/32	11/16	15/64	1/4-20	
CL-355-SK					5/16-18	5/8
CL-545-SK					1/4-20	
CL-555-SK	2	1-3/8	3/4	33/64	5/16-18	5/8
CL-565-SK					3/8-16	
CL-755-SK	2-3/8	1-5/8	3/4	11/16	5/16-18	5/8
CL-765-SK					3/8-16	

HAND KNOBS

CAST IRON, ZINC PLATED CLEAR CHROMATE
OR 319 ALUMINUM ALLOY

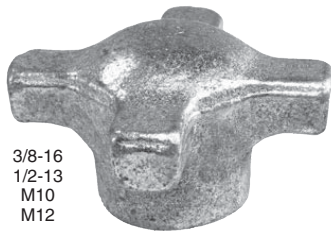
USA & METRIC



5/8-11
3/4-10
M16
M20



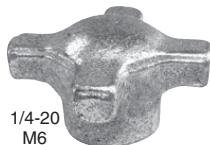
1/2-13
5/8-11
M12
M16



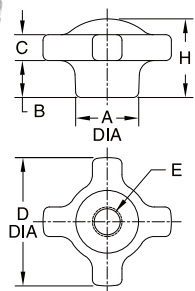
3/8-16
1/2-13
M10
M12



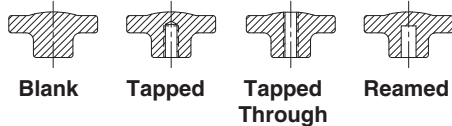
1/4-20
5/16-18
M6
M8



1/4-20
M6



Classic easy-to-grip clamping knob, available in cast iron or aluminum. Choose from five knob sizes, each available blank, tapped, tapped through, or reamed. Note: catalog photos are actual size.



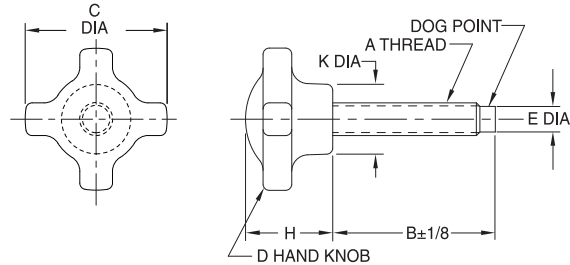
PART NO. CAST IRON	PART NO. ALUMINUM	D DIA	A DIA	B	C	H	HOLE TYPE	E
CL-85-HK-8	CL-85-HK-8A	1-1/8	9/16	5/16	5/16	7/8	BLANK	—
CL-80-HK-8	CL-80-HK-8A						TAPPED	1/4-20 x 1/2 DEEP
CLM-80-HK-8	CLM-80-HK-8A						TAPPED THROUGH	M6 x 1/2 DEEP
CL-8-HK-8	CL-8-HK-8A						REAMED	1/4-20
CLM-8-HK-8	CLM-8-HK-8A	1-3/4	3/4	1/2	3/8	1-1/8	BLANK	—
CL-28-HK-8	CL-28-HK-8A						TAPPED	1/4 x 1/2 DEEP
CLM-28-HK-8	CLM-28-HK-8A						TAPPED THROUGH	M6 x 7/8 DEEP
CL-25-HK-2	CL-25-HK-2A						REAMED	6mm x 1/2 DEEP
CL-10-HK-2	CL-10-HK-2A	2-1/8	1	5/8	7/16	1-3/8	BLANK	—
CL-20-HK-2	CL-20-HK-2A						TAPPED	1/4-20 x 7/8 DEEP
CLM-10-HK-2	CLM-10-HK-2A						TAPPED THROUGH	5/16-18 x 7/8 DEEP
CLM-20-HK-2	CLM-20-HK-2A						REAMED	M6 x 7/8 DEEP
CL-1-HK-2	CL-1-HK-2A	2-1/2	1-1/8	1	1/2	1-5/8	BLANK	—
CL-2-HK-2	CL-2-HK-2A						TAPPED	1/4-20
CLM-1-HK-2	CLM-1-HK-2A						TAPPED THROUGH	5/16-18
CLM-2-HK-2	CLM-2-HK-2A						REAMED	M6
CL-21-HK-2	CL-21-HK-2A	2-1/2	1	5/8	7/16	1-3/8	BLANK	—
CL-22-HK-2	CL-22-HK-2A						TAPPED	1/4 x 7/8 DEEP
CLM-21-HK-2	CLM-21-HK-2A						TAPPED THROUGH	5/16 x 7/8 DEEP
CLM-22-HK-2	CLM-22-HK-2A						REAMED	6mm x 7/8 DEEP
CL-45-HK-4	CL-45-HK-4A	2-1/2	1	5/8	7/16	1-3/8	BLANK	—
CL-20-HK-4	CL-20-HK-4A						TAPPED	5/16-18 x 1 DEEP
CL-30-HK-4	CL-30-HK-4A						TAPPED THROUGH	3/8-16 x 1 DEEP
CL-40-HK-4	CL-40-HK-4A						REAMED	1/2-13 x 1 DEEP
CLM-20-HK-4	CLM-20-HK-4A	2-1/2	1	5/8	7/16	1-3/8	BLANK	—
CLM-30-HK-4	CLM-30-HK-4A						TAPPED	M8 x 1 DEEP
CLM-40-HK-4	CLM-40-HK-4A						TAPPED THROUGH	M10 x 1 DEEP
CL-2-HK-4	CL-2-HK-4A						REAMED	M12 x 1 DEEP
CL-3-HK-4	CL-3-HK-4A	2-1/2	1	5/8	7/16	1-3/8	BLANK	—
CL-4-HK-4	CL-4-HK-4A						TAPPED	5/16-18
CLM-2-HK-4	CLM-2-HK-4A						TAPPED THROUGH	3/8-16
CLM-3-HK-4	CLM-3-HK-4A						REAMED	1/2-13
CLM-4-HK-4	CLM-4-HK-4A	2-1/2	1	5/8	7/16	1-3/8	BLANK	—
CL-23-HK-4	CL-23-HK-4A						TAPPED	M8
CL-24-HK-4	CL-24-HK-4A						TAPPED THROUGH	M10
CLM-23-HK-4	CLM-23-HK-4A						REAMED	M12
CLM-24-HK-4	CLM-24-HK-4A	2-1/2	1	5/8	7/16	1-3/8	BLANK	—
CL-23-HK-4	CL-23-HK-4A						TAPPED	3/8 x 1 DEEP
CL-24-HK-4	CL-24-HK-4A						TAPPED THROUGH	1/2 x 1 DEEP
CLM-23-HK-4	CLM-23-HK-4A						REAMED	10mm x 1 DEEP
CLM-24-HK-4	CLM-24-HK-4A	2-1/2	1	5/8	7/16	1-3/8	BLANK	—
CL-105-HK-10	CL-105-HK-10A						TAPPED	12mm x 1 DEEP
CL-90-HK-9	CL-90-HK-9A						TAPPED THROUGH	1/2-13 x 1-1/4 DEEP
CL-100-HK-10	CL-100-HK-10A						REAMED	5/8-11 x 1-1/4 DEEP
CLM-90-HK-9	CLM-90-HK-9A	2-1/2	1-1/8	1	1/2	1-5/8	BLANK	—
CLM-100-HK-10	CLM-100-HK-10A						TAPPED	M12 x 1-1/4 DEEP
CL-9-HK-9	CL-9-HK-9A						TAPPED THROUGH	M16 x 1-1/4 DEEP
CL-10-HK-10	CL-10-HK-10A						REAMED	1/2-13
CLM-9-HK-9	CLM-9-HK-9A	2-3/4	1-3/8	3/4	1/2	1-1/2	BLANK	—
CLM-10-HK-10	CLM-10-HK-10A						TAPPED	5/8-11
CL-29-HK-9	CL-29-HK-9A						TAPPED THROUGH	M12
CL-31-HK-10	CL-31-HK-10A						REAMED	M16
CLM-29-HK-9	CLM-29-HK-9A	2-3/4	1-3/8	3/4	1/2	1-1/2	BLANK	—
CLM-31-HK-10	CLM-31-HK-10A						TAPPED	1/2 x 1-1/4 DEEP
CL-65-HK-6	CL-65-HK-6A						TAPPED THROUGH	5/8 x 1-1/4 DEEP
CL-50-HK-6	CL-50-HK-6A						REAMED	12mm x 1-1/4 DEEP
CL-60-HK-6	CL-60-HK-6A	2-3/4	1-3/8	3/4	1/2	1-1/2	BLANK	—
CLM-50-HK-6	CLM-50-HK-6A						TAPPED	16mm x 1-1/4 DEEP
CLM-60-HK-6	CLM-60-HK-6A						TAPPED THROUGH	5/8-11
CL-5-HK-6	CL-5-HK-6A						REAMED	3/4-10
CL-6-HK-6	CL-6-HK-6A	2-3/4	1-3/8	3/4	1/2	1-1/2	BLANK	—
CLM-5-HK-6	CLM-5-HK-6A						TAPPED	3/4-10
CLM-6-HK-6	CLM-6-HK-6A						TAPPED THROUGH	M16
CL-25-HK-6	CL-25-HK-6A						REAMED	M20
CL-26-HK-6	CL-26-HK-6A	2-3/4	1-3/8	3/4	1/2	1-1/2	BLANK	—
CLM-25-HK-6	CLM-25-HK-6A						TAPPED	5/8 x 1-1/8 DEEP
CLM-26-HK-6	CLM-26-HK-6A						TAPPED THROUGH	3/4 x 1-1/8 DEEP
CLM-25-HK-6	CLM-25-HK-6A						REAMED	16mm x 1-1/8 DEEP
CLM-26-HK-6	CLM-26-HK-6A	2-3/4	1-3/8	3/4	1/2	1-1/2	BLANK	—
CL-5-HK-6	CL-5-HK-6A						TAPPED	M20 x 1-1/8 DEEP
CL-6-HK-6	CL-6-HK-6A						TAPPED THROUGH	5/8-11
CLM-5-HK-6	CLM-5-HK-6A						REAMED	3/4-10

HAND KNOB ASSEMBLIES

KNOB: 319 ALUMINUM ALLOY
SCREW: 12L14 STEEL, BLACK OXIDE FINISH



Classic, easy-to-grip aluminum knob with an integral steel clamping screw. Four-prong design provides a firm grip for applications requiring quick tightening and high torque. Choice of three knob sizes. Available in thread sizes from 1/4-20 to 3/4-10 (M6 to M20 in metric), most in a choice of several thread lengths. See page 85 for additional hand-knob dimensions.



USA

PART NO.	A	B	C DIA	D	E DIA	H	K DIA
CL-1-HK2T	1/4-20	1	1-3/4	CL-25-HK-2A	.15	1-1/8	3/4
CL-2-HK2T		1-1/2					
CL-2A-HK2T		2					
CL-2B-HK2T		3					
CL-3A-HK2T	5/16-18	1	1-3/4	CL-25-HK-2A	.20	1-1/8	3/4
CL-3-HK2T		1-3/4					
CL-4-HK2T		2-1/2					
CL-4A-HK2T		3					
CL-5A-HK4T	3/8-16	1	2-1/8	CL-45-HK-4A	.25	1-3/8	1
CL-5B-HK4T		1-1/2					
CL-5-HK4T		2					
CL-6-HK4T		2-1/2					
CL-6A-HK4T	1/2-13	3	2-1/8	CL-45-HK-4A	.34	1-3/8	1
CL-7A-HK4T		1					
CL-7B-HK4T		1-1/2					
CL-7C-HK4T		2					
CL-7-HK4T	1/2-13	2-1/2	2-1/8	CL-45-HK-4A	.34	1-3/8	1
CL-8-HK4T		3					
CL-9-HK6T	5/8-11	1-3/4	2-3/4	CL-65-HK-6A	.46	1-1/2	1-3/8
CL-10-HK6T		3					
CL-12-HK6T	3/4-10	3	2-3/4	CL-65-HK-6A	.56	1-1/2	1-3/8

METRIC

PART NO.	A	B	C DIA	D	E DIA	H	K DIA
CLM-1-HK2T	M6	.98	1-3/4	CL-25-HK-2A	.17	1-1/8	3/4
CLM-2-HK2T		1.57					
CLM-3A-HK2T	M8	.98	1-3/4	CL-25-HK-2A	.23	1-1/8	3/4
CLM-3-HK2T		1.77					
CLM-4-HK2T	M10	2.56	2-1/8	CL-45-HK-4A	.27	1-3/8	1
CLM-5A-HK4T		.98					
CLM-5B-HK4T		1.57					
CLM-5-HK4T		1.97					
CLM-6-HK4T	M12	2.56	2-1/8	CL-45-HK-4A	.35	1-3/8	1
CLM-7A-HK4T		.98					
CLM-7B-HK4T		1.57					
CLM-7C-HK4T		1.97					
CLM-7-HK4T	M16	2.56	2-3/4	CL-65-HK-6A	.47	1-1/2	1-3/8
CLM-8-HK4T		2.95					
CLM-9-HK6T	M16	1.77	2-3/4	CL-65-HK-6A	.47	1-1/2	1-3/8
CLM-10-HK6T		2.95					
CLM-12-HK6T	M20	2.95	2-3/4	CL-65-HK-6A	.59	1-1/2	1-3/8

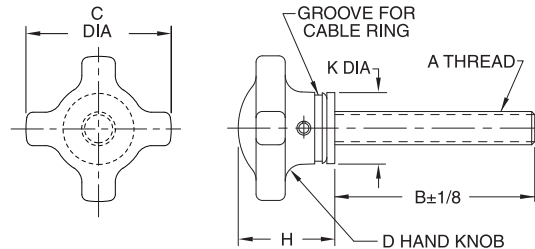
SWIVEL-WASHER HAND KNOB ASSEMBLIES

KNOB: 319 ALUMINUM ALLOY
SCREW: 12L14 STEEL, BLACK OXIDE FINISH.
WASHER: MILD STEEL



NEW!

Hand-knob assembly with a captive, freely rotating washer to prevent marring in clamping applications. Four-prong design provides a firm grip for applications requiring quick tightening and high torque. Plain-end screw with no dogpoint. Choice of three knob sizes. Available in thread sizes from 1/4-20 to 3/4-10, most in a choice of several thread lengths. See page 85 for additional hand-knob dimensions.

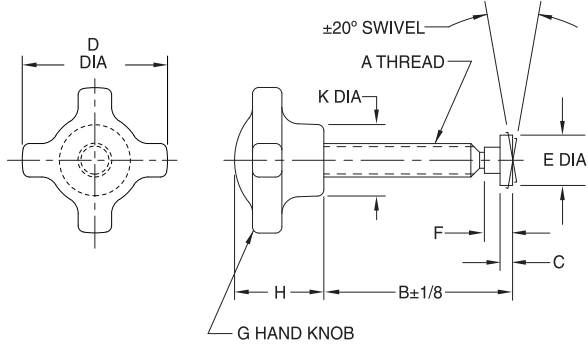


USA

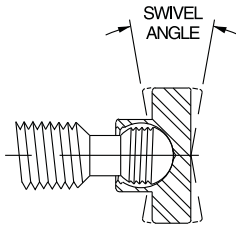
PART NO.	A	B	C DIA	D	H	K DIA	CABLE RING SIZE
CL-1-SHK2T	1/4-20	1	1-3/4	CL-25-HK-2A	1.33	3/4	CL-11-KR
CL-2-SHK2T		1-1/2					
CL-2A-SHK2T		2					
CL-2B-SHK2T	5/16-18	3	1-3/4	CL-25-HK-2A	1.34	3/4	CL-11-KR
CL-3A-SHK2T		1					
CL-3-SHK2T		1-3/4					
CL-4-SHK2T	3/8-16	2-1/2	2-1/8	CL-45-HK-4A	1.47	1	CL-14-KR
CL-4A-SHK2T		3					
CL-5A-SHK4T		1					
CL-5B-SHK4T	1/2-13	1-1/2	2-1/8	CL-45-HK-4A	1.53	1	CL-14-KR
CL-5-SHK4T		2					
CL-6-SHK4T		2-1/2					
CL-6A-SHK4T	5/8-11	3	2-3/4	CL-65-HK-6A	1.66	1-3/8	CL-19-KR
CL-7A-SHK4T		1					
CL-7B-SHK4T		1-1/2					
CL-7C-SHK4T	3/4-10	2	2-3/4	CL-65-HK-6A	1.77	1-3/8	CL-19-KR
CL-7-SHK4T		2-1/2					
CL-8-SHK4T		3					
CL-9-SHK6T	3/4-10	1-3/4	2-3/4	CL-65-HK-6A	1.66	1-3/8	CL-19-KR
CL-10-SHK6T		3					
CL-12-SHK6T		3					

KNOB SHOE ASSEMBLIES

KNOB: 319 ALUMINUM ALLOY
SCREW: 12L14 STEEL, BLACK OXIDE FINISH
FOOT: 12L14 STEEL, BLACK OXIDE FINISH (OR DELRIN®)



This hand-knob assembly features an integral steel clamping screw with a removable swivel foot. Four-prong design provides a firm grip for applications requiring quick tightening and high torque. Choice of four knob sizes. Available in thread sizes from 1/4-20 to 3/4-10 (M6 to M20 in metric), most in a choice of several thread lengths. See page 85 for additional hand-knob dimensions.



Knob Shoe Assemblies use our patented left-hand-thread swivel-foot system. The ball end of the body screws into the foot for easy installation and removal. Once the ball threads pass beyond the foot threads, the foot can rotate and pivot freely (20° total angle). Foot threads are left-hand to positively prevent accidental backout during use. Delrin® feet are optional. To order with a Delrin® foot, add "N" to the part number, e.g. CL-1-KSAN. Note: Delrin® feet are not threaded – they snap on and off. For other foot types, see Feet for Swivel Screws on page 103 (order separately).

USA

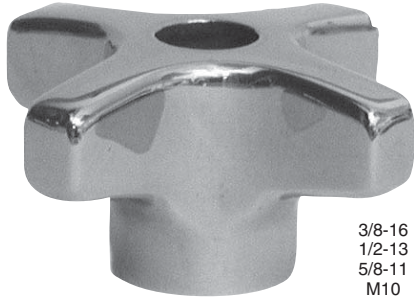
PART NO.	A	B	C	D DIA	E DIA	F	G	H	K DIA
CL-1-KSA	1/4-20	1-1/4	1/8	1-1/8	3/8	5/16	CL-85-HK-8A	7/8	9/16
CL-2-KSA		2							
CL-2A-KSA	1/4-20	2	1/8	1-3/4	3/8	5/16	CL-25-HK-2A	1-1/8	3/4
CL-3-KSA	3/8-16	1-1/2	5/32	1-3/4	1/2	11/32	CL-25-HK-2A	1-1/8	3/4
CL-4-KSA		2-1/4							
CL-4A-KSA	2								
CL-5-KSA	3/8-16	2-1/16	3/16	2-1/8	9/16	7/16	CL-45-HK-4A	1-3/8	1
CL-6-KSA		2-13/16							
CL-7-KSA		3-9/16							
CL-8-KSA	1/2-13	2-13/16	7/32	2-3/4	3/4	27/64	CL-65-HK-6A	1-1/2	1-3/8
CL-9-KSA		3-9/16							
CL-10-KSA		4-5/16							
CL-11-KSA	5/8-11	3-5/16	7/32	2-3/4	15/16	33/64	CL-65-HK-6A	1-1/2	1-3/8
CL-13-KSA		4-13/16							
CL-14-KSA	3/4-10	3-5/16							
CL-16-KSA		4-13/16							

METRIC

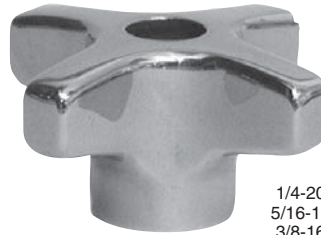
PART NO.	A	B	C	D DIA	E DIA	F	G	H	K DIA
CLM-1-KSA	M6	.98	1/8	1-1/8	3/8	5/16	CL-85-HK-8A	7/8	9/16
CLM-2-KSA		1.97							
CLM-3-KSA	M8	1.57	5/32	1-3/4	1/2	11/32	CL-25-HK-2A	1-1/8	3/4
CLM-4-KSA		2.36							
CLM-5-KSA	M10	1.97	3/16	2-1/8	9/16	7/16	CL-45-HK-4A	1-3/8	1
CLM-6-KSA		3.54							
CLM-7-KSA	M12	2.76	7/32	2-3/4	3/4	27/64	CL-65-HK-6A	1-1/2	1-3/8
CLM-8-KSA		4.33							
CLM-9-KSA	M16	3.15	7/32	2-3/4	5/16	33/64	CL-65-HK-6A	1-1/2	1-3/8
CLM-10-KSA		4.72							

HAND KNOBS STAINLESS STEEL

300-SERIES STAINLESS STEEL

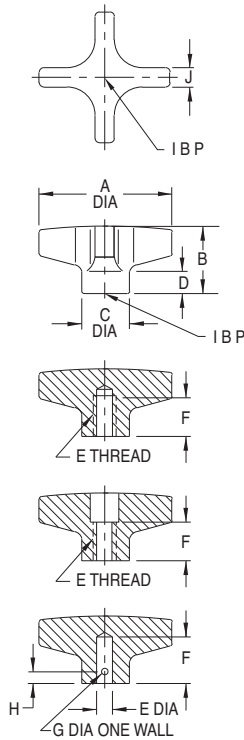


3/8-16
1/2-13
5/8-11
M10
M12
M16



1/4-20
5/16-18
3/8-16
M6
M8
M10

High-quality, stainless steel knob with a beautiful polished finish. Four-prong design provides a firm grip for applications requiring quick tightening and high torque. Choose from two knob sizes, each available blank, tapped, tapped through, or reamed. Note: Catalog photos are actual size.



USA & METRIC

PART NO.	A DIA	B	C DIA	D	HOLE TYPE	E	F	G	H	J
CL-200-HK-S	2	1.02	.78	.34	BLANK	—	—	—	—	.33
CL-240-HK-S					1/4-20	11/16	—	—		
CL-250-HK-S					5/16-18					
CL-260-HK-S					3/8-16					
CLM-260-HK-S					M6					
CLM-280-HK-S					M8	5/8	—	—		
CLM-2100-HK-S					M10					
CL-241-HK-S					1/4-20					
CL-251-HK-S					5/16-18	3/4	—	—		
CL-261-HK-S					3/8-16					
CLM-261-HK-S					M6					
CLM-281-HK-S					M8	5/8	1/8	3/16		
CLM-2101-HK-S					M10					
CL-255-HK-S					5/16					
CL-265-HK-S	3/8	11/16	5/32	.47						
CL-600-HK-S	BLANK	—	—		—					
CL-660-HK-S	3	1.50	1.14		.50	TAPPED	3/8-16	1	—	—
CL-680-HK-S							1/2-13			
CL-6100-HK-S							5/8-11			
CLM-6100-HK-S							M10			
CLM-6120-HK-S						M12	3/4	—	—	
CLM-6160-HK-S						M16				
CL-661-HK-S						3/8-16				
CL-681-HK-S						1/2-13	1	1-1/4	—	
CL-6101-HK-S						5/8-11				
CLM-6101-HK-S						M10				
CLM-6121-HK-S						M12				
CLM-6161-HK-S						M16	1	5/32	1/4	
CL-665-HK-S				3/8						
CL-685-HK-S				1/2						

FOUR-PRONG KNOBS

KNOB: BLACK PHENOLIC PLASTIC WITH BRASS INSERT
STUD: MILD STEEL, ZINC PLATED CLEAR CHROMATE

Phenolic — Tapped



5/16-18 CL-20-PPK-4
3/8-16 CL-30-PPK-4
1/2-13 CL-40-PPK-4
M10 CLM-10-PPK-4



1/4-20 CL-10-PPK-2
5/16-18 CL-20-PPK-2
3/8-16 CL-30-PPK-2
M8 CLM-8-PPK-2



#10-24 CL-10B-PPK-1
#10-32 CL-10A-PPK-1
1/4-20 CL-10-PPK-1
5/16-18 CL-20-PPK-1
M6 CLM-6-PPK-1

Phenolic — Tapped Through Hole



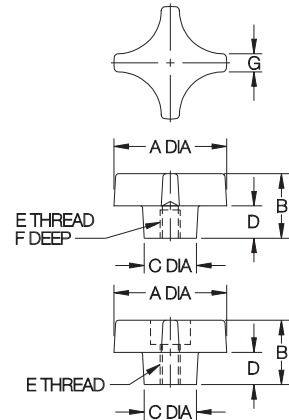
5/16-18 CL-2-PPK-4
3/8-16 CL-3-PPK-4
1/2-13 CL-4-PPK-4



1/4-20 CL-1-PPK-2
5/16-18 CL-2-PPK-2
3/8-16 CL-3-PPK-2



#10-24 CL-1B-PPK-1
#10-32 CL-1A-PPK-1
1/4-20 CL-1-PPK-1



PHENOLIC — TAPPED (USA & METRIC)

PART NO.	A	B	C DIA	D	E	F	G
CL-10B-PPK-1	1-1/4	7/8	5/8	3/8	#10-24	5/16	1/4
CL-10A-PPK-1					#10-32		
CL-10-PPK-1					1/4-20		
CL-20-PPK-1					5/16-18		
CLM-6-PPK-1	1-3/4	1	13/16	1/2	M6	7/16	9/32
CL-10-PPK-2					1/4-20		
CL-20-PPK-2					5/16-18		
CL-30-PPK-2					3/8-16		
CLM-8-PPK-2	2-1/4	1-1/8	1	9/16	M8	1/2	5/16
CL-20-PPK-4					5/16-18		
CL-30-PPK-4					3/8-16		
CL-40-PPK-4					1/2-13		
CLM-10-PPK-4					M10	5/8	

Four-prong design provides a strong grip for clamping and other applications requiring quick tightening and high torque. Choice of three knob sizes. Molded-in brass insert provides superior thread strength. Also available with a molded-in clamping stud (page 91). Non-standard thread sizes, reamed holes, or other lengths of molded-in studs are available in quantities of 500 and above. Note: Catalog photos are actual size.

PHENOLIC — TAPPED THROUGH HOLE (USA)

PART NO.	A	B	C DIA	D	E	F	G
CL-1B-PPK-1	1-1/4	7/8	5/8	3/8	#10-24	5/16	1/4
CL-1A-PPK-1					#10-32		
CL-1-PPK-1	1-3/4	1	13/16	1/2	1/4-20	5/8	9/32
CL-1-PPK-2					1/4-20		
CL-2-PPK-2					5/16-18		
CL-3-PPK-2					3/8-16		
CL-2-PPK-4	2-1/4	1-1/8	1	9/16	5/16-18	5/8	5/16
CL-2-PPK-4					3/8-16		
CL-3-PPK-4					1/2-13		

FOUR-PRONG KNOBS

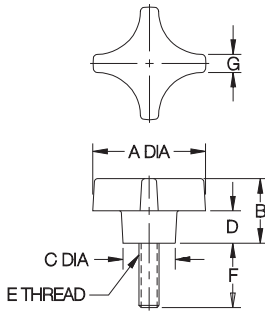


#10-24 x 3/4 CL-1B-PPK1T
#10-32 x 3/4 CL-1A-PPK1T
1/4-20 x 1 CL-1-PPK1T
M6 x 20mm CLM-620-PPK1T

3/8-16 x 1
3/8-16 x 1-1/2
3/8-16 x 2
3/8-16 x 2-1/2
1/2-13 x 1-1/2
1/2-13 x 2
1/2-13 x 2-1/2
M10 x 40mm

CL-5A-PPK4T
CL-5B-PPK4T
CL-5-PPK4T
CL-6-PPK4T
CL-7B-PPK4T
CL-7C-PPK4T
CL-7-PPK4T
CLM-1040-PPK4T

1/4-20 x 1 CL-1-PPK2T
5/16-18 x 1 CL-3A-PPK2T
5/16-18 x 1-1/2 CL-4A-PPK2T
5/16-18 x 2 CL-4B-PPK2T
M8 x 30mm CLM-830-PPK-2T

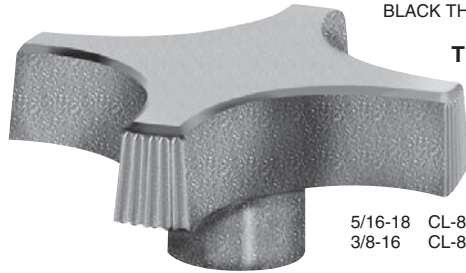


PHENOLIC — STUD TYPE (USA & METRIC)

PART NO.	A	B	C DIA	D	E	F	G
CL-1B-PPK1T					#10-24	3/4	
CL-1A-PPK1T					#10-32	3/4	
CL-1-PPK1T	1-1/4	7/8	5/8	3/8	1/4-20	1	1/4
CLM-620-PPK1T					M6	.79	
CL-1-PPK2T					1/4-20	1	
CL-3A-PPK2T						1	
CL-4A-PPK2T	1-3/4	1	13/16	1/2	5/16-18	1-1/2	9/32
CL-4B-PPK2T						2	
CLM-830-PPK2T					M8	1.18	
CL-5A-PPK4T						1	
CL-5B-PPK4T					3/8-16	1-1/2	
CL-5-PPK4T						2	
CL-6-PPK4T	2-1/4	1-1/8	1	9/16		2-1/2	5/16
CL-7B-PPK4T						1-1/2	
CL-7C-PPK4T					1/2-13	2	
CL-7-PPK4T						2-1/2	
CLM-1040-PPK4T					M10	1.57	

FOUR-PRONG KNOBS

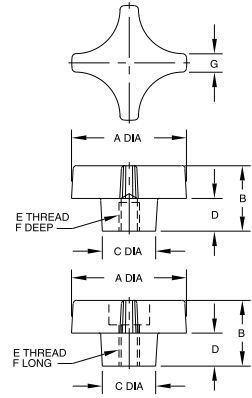
BLACK THERMOPLASTIC WITH BRASS INSERT



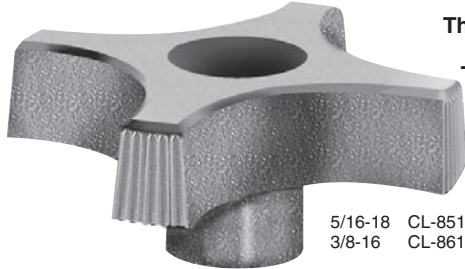
Thermoplastic — Tapped

5/16-18 CL-850-PPK
3/8-16 CL-860-PPK

Four-prong design in thermoplastic, with a textured non-slip, non-glare finish. Molded-in brass insert provides superior thread strength. Non-standard thread sizes, reamed holes, molded-in studs, or special colors are available in quantities of 500 and above. Note: Catalog photos are actual size.



Thermoplastic — Tapped Through Hole



5/16-18 CL-851-PPK
3/8-16 CL-861-PPK

THERMOPLASTIC — TAPPED (USA)

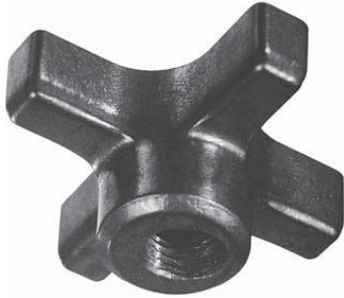
PART NO.	A	B	C DIA	D	E	F	G
CL-850-PPK	3	1-1/4	7/8	9/16	5/16-18	5/8	1/2
CL-860-PPK					3/8-16		

THERMOPLASTIC — TAPPED THROUGH HOLE (USA)

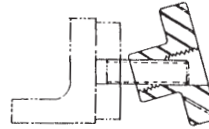
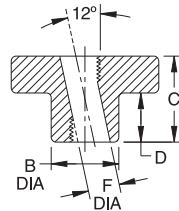
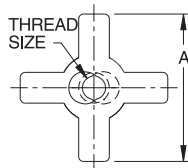
PART NO.	A	B	C DIA	D	E	F	G
CL-851-PPK	3	1-1/4	7/8	9/16	5/16-18	5/8	1/2
CL-861-PPK					3/8-16		

QUICK-ACTING KNOBS

SINTERED IRON, BLACK OXIDE FINISH



Quick-acting four-prong knob that slides in and out of clamping position, ideal when the knob must be completely removed for loading. Tilt knob to slide in, then straighten to engage threads and tighten. To remove, loosen knob, then tilt to slide out. Four-prong design provides a firm grip for applications requiring quick tightening and high torque. For full strength, use a stud that extends slightly beyond the knob, to engage all threads.



Tilt knob to slide in and out.



Straighten knob to engage threads for clamping.

USA

PART NO.	THREAD SIZE	A	B DIA	C	D	F DIA
CL-1-QAK	1/4-20	1-1/8	9/16	5/8	5/16	17/64
CL-2-QAK	5/16-18	1-1/2	11/16	7/8		21/64
CL-3-QAK	3/8-16	2	13/16	1	1/2	25/64
CL-4-QAK	1/2-13	2-1/2	1	1-1/8	9/16	33/64
CL-5-QAK	5/8-11	3	1-1/4	1-1/4	5/8	41/64

METRIC

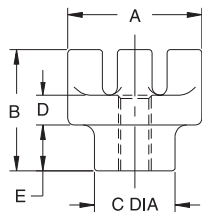
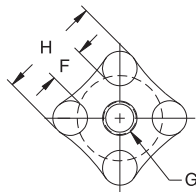
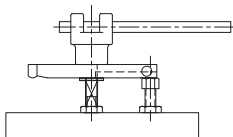
CLM-6-QAK	M6	1-1/8	9/16	5/8	5/16	.25
CLM-8-QAK	M8	1-1/2	11/16	7/8		.33
CLM-10-QAK	M10	2	13/16	1	1/2	.41
CLM-12-QAK	M12	2-1/2	1	1-1/8	9/16	.49
CLM-16-QAK	M16	3	1-1/4	1-1/4	5/8	.65

BAR KNOBS

CAST IRON, ZINC PLATED CLEAR CHROMATE



Heavy-duty knob that can be turned easily by hand, then tightened by inserting a bar between the prongs. Choose from three knob sizes, each available blank or with a choice of tapped holes.



USA & METRIC

PART NO.	A	B	C DIA	D	E	F	G	H
CL-1-BK							BLANK	
CL-2-BK							3/8-16	
CL-4-BK							1/2-13	
CL-6-BK	2	2-1/8	1-1/4	1/2	7/8	7/16	5/8-11	1-5/8
CLM-2-BK							M10	
CLM-4-BK							M12	
CLM-6-BK							M16	
CL-8-BK							BLANK	
CL-9-BK							1/2-13	
CL-11-BK							5/8-11	
CL-13-BK	2-1/2	2-3/8	1-1/2	9/16	15/16	11/16	3/4-10	2
CLM-9-BK							M12	
CLM-11-BK							M16	
CLM-13-BK							M20	
CL-15-BK							BLANK	
CL-16-BK							3/4-10	
CL-18-BK							7/8-9	
CL-20-BK	3-1/2	2-3/8	2-1/8	9/16	15/16	1-5/16	1"-8	2-7/8
CLM-16-BK							M20	
CLM-20-BK							M24	

THREE-PRONG KNOBS

BLACK THERMOPLASTIC WITH BRASS INSERT



5/16-18 CL-850-TPK
3/8-16 CL-860-TPK



1/4-20 CL-640-TPK
5/16-18 CL-650-TPK
3/8-16 CL-660-TPK



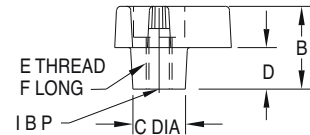
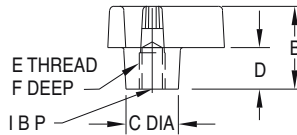
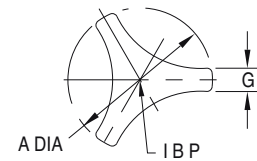
1/4-20 CL-440-TPK
5/16-18 CL-450-TPK

Thermoplastic —
Tapped



5/16-18 CL-851-TPK
3/8-16 CL-861-TPK

Thermoplastic —
Tapped Through Hole



Modern three-prong design provides quick tightening and high torque. Textured non-slip, non-glare finish. Choice of three knob sizes. Molded-in brass insert provides superior thread strength. Non-standard thread sizes, reamed holes, molded-in studs, or special colors are available in quantities of 500 and above.

THERMOPLASTIC — TAPPED (USA)

PART NO.	A DIA	B	C DIA	D	E	F	G
CL-440-TPK	1-1/2	7/8	1/2	3/8	1/4-20	7/16	9/32
CL-450-TPK					5/16-18		
CL-640-TPK					1/4-20		
CL-650-TPK	2	1-1/16	5/8	1/2	5/16-18	7/16	3/8
CL-660-TPK					3/8-16		
CL-850-TPK	2-1/2	1-1/8	3/4	1/2	5/16-18	7/16	1/2
CL-860-TPK					3/8-16	1/2	

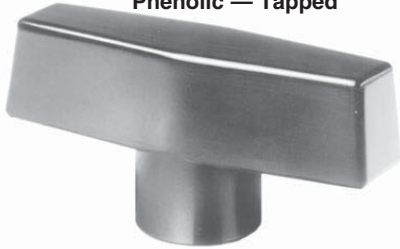
THERMOPLASTIC — TAPPED THROUGH HOLE (USA)

PART NO.	A DIA	B	C DIA	D	E	F	G
CL-851-TPK	2-1/2	1-1/8	3/4	1/2	5/16-18	5/8	1/2
CL-861-TPK					3/8-16		

T-HANDLE KNOBS

BLACK PHENOLIC PLASTIC OR THERMOPLASTIC WITH BRASS INSERT

Phenolic — Tapped



1/4-20 CL-632-TK
5/16-18 CL-642-TK
3/8-16 CL-652-TK
3/8-24 CL-654-TK
M8 CLM-642-TK
M10 CLM-652-TK

Thermoplastic — Tapped



1/4-20 CL-6320-TK
5/16-18 CL-6420-TK
3/8-16 CL-6520-TK
M8 CLM-6420-TK
M10 CLM-6520-TK

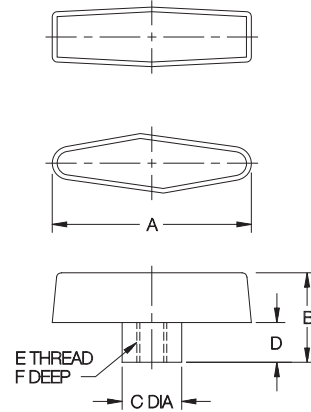


1/4-20 CL-432-TK
5/16-18 CL-442-TK
3/8-16 CL-452-TK
M6 CLM-432-TK
M8 CLM-442-TK



1/4-20 CL-232-TK
M6 CLM-232-TK

T-Handle Knobs provide maximum leverage for heavy-duty clamping. Ideal for fastening fold-down handles and stands. Available in phenolic plastic (one knob size) for a shiny polished finish, or in thermoplastic (three knob sizes) for a textured non-slip, non-glare finish. Molded-in brass insert provides superior thread strength. Non-standard thread sizes, reamed holes, molded-in studs, or special colors (thermoplastic only) are available in quantities of 500 and above. Note: Catalog photos are actual size.



PHENOLIC — TAPPED (USA & METRIC)

PART NO.	A	B	C DIA	D	E	F
CL-632-TK	2-1/2	2-1/2	2-1/2	2-1/2	1/4-20	5/8
CL-642-TK					5/16-18	
CL-652-TK					3/8-16	1/2
CL-654-TK					3/8-24	
CLM-642-TK					M8	
CLM-652-TK					M10	1/2

THERMOPLASTIC — TAPPED (USA & METRIC)

PART NO.	A	B	C DIA	D	E	F	
CL-232-TK	1	7/8	1/2	3/8	1/4-20	7/16	
CLM-232-TK					M6		
CL-432-TK	2	1-1/8	3/4	1/2	1/4-20	5/8	
CL-442-TK					5/16-18		
CL-452-TK					3/8-16	1/2	
CLM-432-TK					M6		
CLM-442-TK					M8		5/8
CL-6320-TK					2-1/2	1-1/4	3/4
CL-6420-TK	5/16-18						
CL-6520-TK	3/8-16	1/2					
CLM-6420-TK	M8		5/8				
CLM-6520-TK	M10		1/2				