



ROEMHELD
HILMA ■ STARK

Issue 11-09 E

C 2.345

Directional Control Valve Combination ND 4

manually operated, single/double acting,
max. operating pressure 500 bar

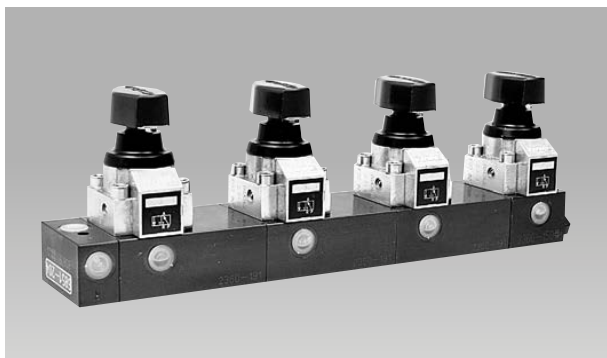
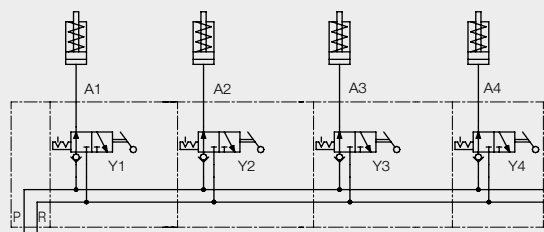


Figure: valve block for four clamping circuits with single-acting cylinders

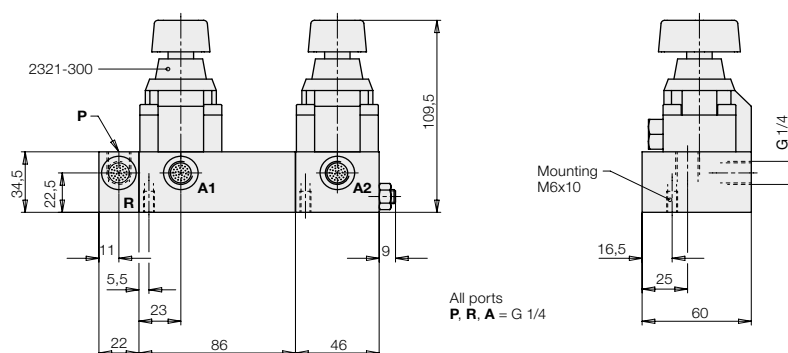
Hydraulic circuit diagram for four circuits with single-acting cylinders



Single-acting version

These directional control valve combinations are particularly suited for operating of individual clamping points in multiple clamping systems.

Dimension example: single-acting version for two clamping circuits (6851 202)



General data

| | |
|--------------------|-------------------------------|
| Description | 3/2 directional control valve |
| Type | Poppet valve |
| Type of mounting | Thread M6 |
| Porting connection | Mounting plate |
| Port size | G 1/4 |
| Weight | see data sheet C 2.320 |

Hydraulic data

| | |
|-----------------------|---|
| Adm. operating press. | 0 – 500 bar |
| Adm. flow rate | 8 l/min |
| Direction of flow | only in direction of arrow as in symbol |
| Hydraulic oil | HLP 22 |
| Δ p-Q curve | see data sheet C 2.320 |

Operating specification

| | |
|-------------------|---------|
| manually operated | |
| Angle of rotation | 90° |
| Operating torque | 0.63 Nm |

Valve combinations single-acting

| Number of clamping circuits | Part no. |
|-----------------------------|----------|
| 1 | 6851 201 |
| 2 | 6851 202 |
| 3 | 6851 203 |
| 4 | 6851 204 |
| 5 | 6851 205 |
| 6 | 6851 206 |
| 7 | 6851 207 |

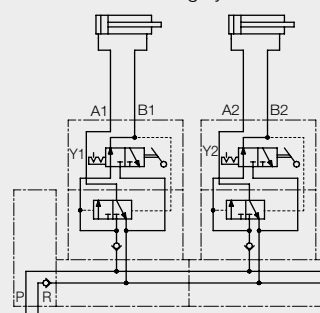
Further combinations are available on request.

Double-acting versions



Figure: valve block for four clamping circuits with double-acting cylinders

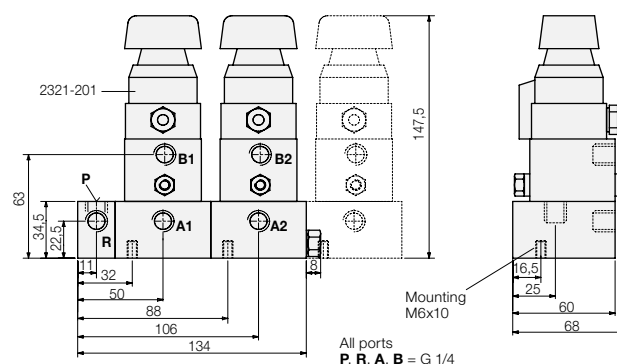
Hydraulic circuit diagram for two double-acting cylinders



Double-acting version

These valve combinations can be used to operate double-acting cylinders. A 3/2 directional control valve and an intermediate valve plate are operated by a turning knob so that the double-acting function is obtained. The design of the subplates allows the combination with single-acting units of page 1.

Dimensions for double-acting version



General data

| | |
|--------------------|---------------------------------|
| Description | 4/2 directional control valve |
| Type | Poppet valve |
| Type of mounting | Thread M6 |
| Porting connection | Mounting plate |
| Port size | G 1/4 |
| Weight | approx. 3.5 kg / operating unit |

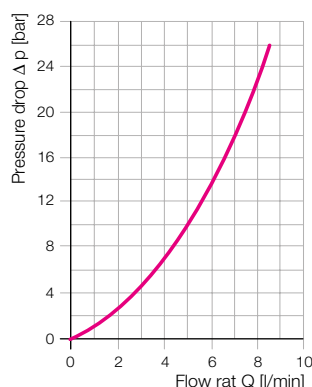
Hydraulic data

| | |
|-----------------------|---|
| Adm. operating press. | 0 – 500 bar |
| Adm. flow rate | 8 l/min |
| Direction of flow | only in direction of arrow as in symbol |
| Hydrauliköl | HLP 22 |

Operating specification

| | |
|-------------------|---------|
| manually operated | |
| Angle of rotation | 90° |
| Operating torque | 0.63 Nm |

Δp -Q characteristic curve for kinematic viscosity of $53 \times 10^{-6} \text{ m}^2/\text{s}$ (HLP 22 at 20 °C)



Valve combinations double-acting

| Number of clamping circuits | Part no. |
|-----------------------------|----------|
| 1 | 2365001 |
| 2 | 2365002 |
| 3 | 2365003 |
| 4 | 2365004 |
| 5 | 2365005 |

Further combinations are available on request.