



**ROEMHELD**  
HILMA ■ STARK

Issue 2-22 E

## C 2.360

### Directional Control Valves ND 4 electrically-operated for cable socket max. operating pressure 500 bar (350 bar)



#### Technical data

Type	poppet valve hermetically sealed
Type of mounting	4 screws M 6
Tightening torque	9.5 Nm
Type of connection	Mounting plate see reverse

#### Hydraulic characteristics

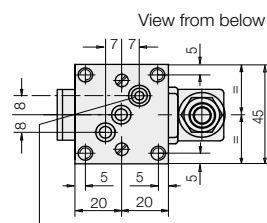
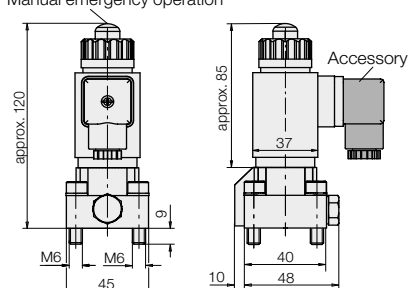
Adm. operating pressure	500 bar
Adm. flow rate	8 l/min
Direction of flow	only in direction of arrow as in symbol
Hydraulic oil	HLP 22

#### Electrical characteristics

Nominal voltage +5 % –10 %	24 V DC
Inrush power	18 W
Holding power	18 W
Power consumption	18 W
Make time	100 ms
Brake time	50 ms
Max. cycles	2000/h
Duty cycle	100 % ED
Code class	IP 54
Connection	for cable socket EN175301-803 Form A

#### 2/2 and 3/2 directional control valves

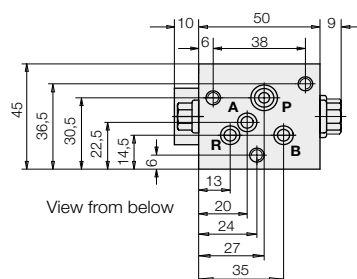
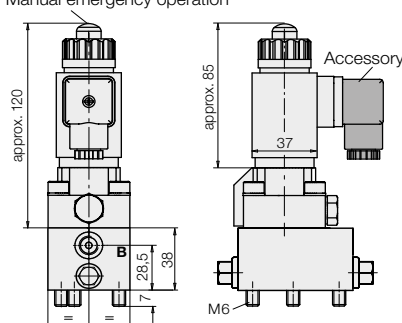
Manual emergency operation



Bore hole for plug-in check valve

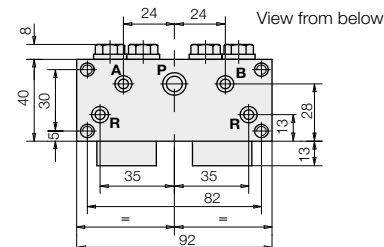
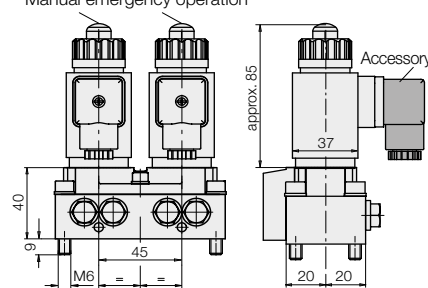
#### 4/2 directional control valve

Manual emergency operation

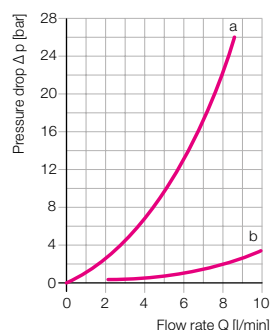


#### 4/3 directional control valve\*

Manual emergency operation



$\Delta p$ -Q characteristic curve for kinematic Viscosity  
of 53x10<sup>-6</sup> m<sup>2</sup>/s (HLP 22 at 20 °C)



a = solenoid valve P → A and A → R  
b = plug-in check valve

\* max. 350 bar

#### Denomination

3/2 directional control valve GZ 3-1

3/2 directional control valve GZ 3-1 R

2/2 directional control valve GZ 2-1

2/2 directional control valve GS 2-1

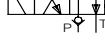
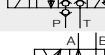
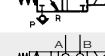
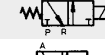
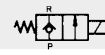
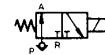
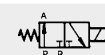
3/2 directional control valve G 3-1

3/2 directional control valve G 3-1 R

4/3 directional control valve G 22-1\*

4/2 directional control valve G 4-1R

#### Symbol



#### with socket adapter Part no.

**2361 520**

**2361 620**

**2361 621**

**2361 622**

**2362 520**

**2362 620**

**2361 522**

**2362 520  
+2360 114**

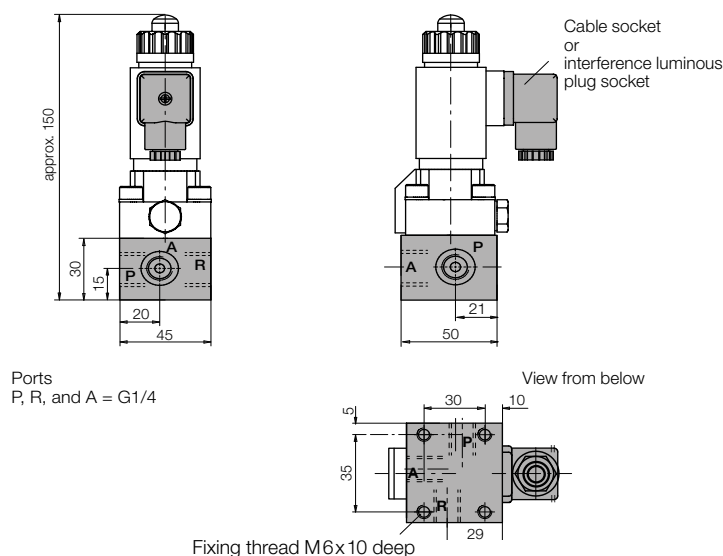
Römheld GmbH

Subject to modifications

Knowledge is POWER – Motion Force Control is our Business

HYQUIP Limited New Brunswick Street Horwich Bolton Lancashire BL6 7JB UK

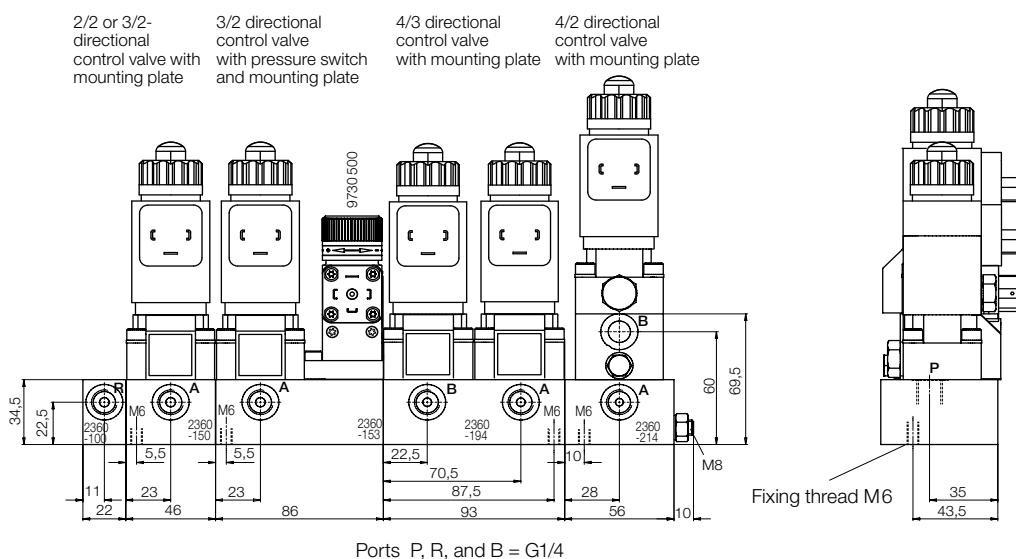
## Single mounting plate for 2/2 and 3/2 directional control valve



Accessories	Part no.
Cable socket as per EN175301-803 Form A	<b>3141012</b>
Interference luminous plug socket	<b>3141477</b>
Solenoid coil 24 V/18W (spare part)	<b>3142320</b>
Plug-in check valve (spare part)	<b>3815002</b>
Single mounting plate	<b>3534039</b>

Sealing (spare part)	Ports	O-ring	Part no.
2/2 and 3/2 directional control valve	P and R	8 x 1.5	<b>3000343</b>
	A	5 x 1.5	<b>3000340</b>
4/2 and 4/3 directional control valve	P	8 x 1.5	<b>3000343</b>
	A, B and R	5 x 1.5	<b>3000340</b>

## Example for series mounting plate combination



### Example of ordering:

- 1 off mounting plate combination consisting of:
- 1 off input plate  
**Part no. 2360100**
- 1 off series mounting plate  
**Part no. 2360150**
- 1 off series mounting plate  
**Part no. 2360153**
- 1 off series mounting plate  
**Part no. 2360194**
- 1 off series mounting plate  
**Part no. 2360214**
- 1 off threaded rod M8 x 1000\*  
**Part no. 3300343**

\* Minimum length = 2 x total length of all mounting plates + 40 mm

