

## Gauge Accessories

▼ Shown from left to right: GA3, V91, GA1, GA2, GA4, NV251, GA918



### GA, NV, V Series

Maximum Operating Pressure:  
**700 bar**

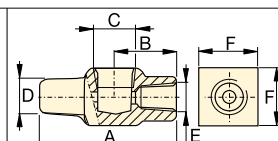
▼ A gauge is easily installed into your hydraulic system using a gauge adaptor.



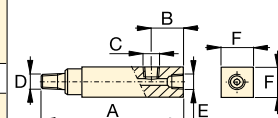
#### Gauge Adaptors (GA-Series)

- For easy mounting of a pressure gauge onto your system
- Male end screws into pump or cylinder port, female end accepts hose or coupler, 3<sup>rd</sup> port is for gauge connection
- GA918 provides for swivel connection.

Model Number	Gauge Port (NPTF)	Male End (NPTF)	Female End (NPTF)	Dimensions (mm)					
				A	B	C	D	E	F
GA1	1/2"	3/8"	3/8"	71	31	1/2" NPTF	3/8" NPTF	3/8" NPTF	32
GA2	1/2"	3/8"		155	35	1/2" NPTF	3/8" NPTF	3/8" NPTF	32
GA3	1/4"	3/8"		133	35	1/4" NPTF	3/8" NPTF	3/8" NPTF	32
GA4	1/2"	1/4"		111	35	1/2" NPTF	1/4" NPTF	3/8" NPTF	32



GA1



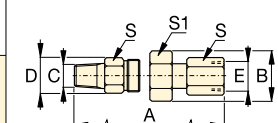
GA2, GA3, GA4



#### Swivel Adaptor (GA918)

- Simplifies gauge installation and reading.

Model Number	Dimensions (mm)						
	A	B	C	D	E	S	S1
GA918	117	43	1/2" NPTF	28,5	1/2" NPTF	29	38



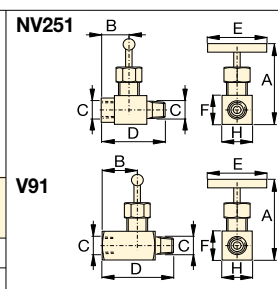
GA918



#### Needle Valves (V- and NV-Series)

- Both NV251 and V91 provide positive shut-off
- 316 stainless steel stem, 24 threads/in (NV251).

Model Number	Orifice (mm)	Thread Size	Dimensions (mm)					
			A	B	C	D	E	F
NV251	4,3	1/4" NPTF	57	29	1/4" NPTF	57	46	19
V91	4,8	1/2" NPTF	89	32	1/2" NPTF	64	32	37



V91