

ZA4-Series, Modular Air Hydraulic Pumps

ENERPAC

▼ Shown: ZA4208MX, ZA4420MX



Z Tough
Dependable
Innovative
CLASS



ATEX 95 Certified

The Enerpac ZA4-series air pumps are tested and certified according to the **Equipment Directive 94 / 9 / EC** "ATEX Directive" for equipment and protective systems intended for use in potentially explosive atmospheres.



II 2 GD ck T4
DEKRA 0602

Page: 395

- ATEX 95 certified for use in potentially explosive atmospheres
- Features Z-Class high efficiency pump design, higher oil flow and bypass pressure
- Two-speed operation reduces cycle time for improved productivity
- User adjustable relief valve built-in on manual valves. Oil ports on valves are 3/8" NPTF
- Optional heat exchanger warms exhaust air to prevent freezing and cools the oil
- Full sight oil level glass on 9,8, 19,8 and 39 litres reservoirs, oil level indicators on 4,6 and 6,8 litres reservoirs.



Speed Chart

To determine how a specific pump will operate your cylinder, see the Pump-Cylinder Speed Chart in the 'Yellow Pages'.

Page: 405



Hoses

Enerpac offers a complete line of high quality hydraulic hoses. To ensure the integrity of your system, specify only genuine Enerpac hydraulic hoses.

Page: 128

Used with Cylinder	Reservoir Size (litres)	Manual Valve ¹⁾ Model Number	Valve Function	Model Number	Output Flow Rate ²⁾				Relief Valve Adjustment Range (bar)	Maximum Air Consumption ³⁾ (l/min)
					at 7 bar	at 50 bar	at 350 bar	at 700 bar		
—	4,6	—	—	ZA4004NX	14,0	11,0	1,8	1,3	—	2840
Single-acting	4,6	VM32	Advance / Retract	ZA4204MX	14,0	11,0	1,8	1,3	70 - 700	2840
	6,8	VM33	Advance / Hold / Retract	ZA4308MX	14,0	11,0	1,8	1,3	70 - 700	2840
	9,8	VM33L	Advance / Hold / Retract	ZA4610MX	14,0	11,0	1,8	1,3	70 - 700	2840
	4,6	VM43	Advance / Hold / Retract	ZA4404MX	14,0	11,0	1,8	1,3	70 - 700	2840
Double-acting	6,8	VM43	Advance / Hold / Retract	ZA4408MX	14,0	11,0	1,8	1,3	70 - 700	2840
	9,8	VM43L	Advance / Hold / Retract	ZA4810MX	14,0	11,0	1,8	1,3	70 - 700	2840
	19,8	VM43	Advance / Hold / Retract	ZA4420MX	14,0	11,0	1,8	1,3	70 - 700	2840
	39	VM43	Advance / Hold / Retract	ZA4440MX	14,0	11,0	1,8	1,3	70 - 700	2840

¹⁾ See pages 122-123 for hydraulic symbols of these valves.

²⁾ Actual oil flow will vary with air supply.

³⁾ Dynamic air pressure range: 4 - 7 bar.

Modulair Air Hydraulic Pumps

▼ This is how a ZA4-Series pump model number is built up:

1	2	3	4	5	6	7	8
Product Type	Motor Type	Flow Group	Valve Type	Reservoir Size	Valve Operation	Motor Voltage	Options

1 Product Type

Z = Pump Class

2 Prime Mover

A = Air motor

3 Flow Group

4 = 1,3 l/min @ 700 bar

4 Valve Type

- 0 = No valve, with cover plate
- 2 = 3/2 manual valve **VM32**
- 3 = 3/3 manual valve **VM33**
- 4 = 4/3 manual valve **VM43**
- 6 = 3/3 manual locking valve **VM33L** with pilot operated check
- 7 = 3/2 manual valve **VM22**
- 8 = 4/3 manual locking valve **VM43L** with pilot operated check.

5 Reservoir Size

- 04 = 4,6 litres
- 08 = 6,8 litres
- 10 = 9,8 litres
- 20 = 19,8 litres
- 40 = 39 litres

6 Valve Operation

- M = Manual valve
- N = No valve

7 Motor Voltage

- X = Not applicable

8 Options

- F = Return Line Filter
- G = 1000 bar gauge
- H = Heat exchanger (on 4,6 and 6,8 litres reservoir only)
- K = Skid Bar (on 4,6 and 6,8 litres reservoir only)
- N = No reservoir handles (includes lifting eyes on 9,8, 19,8 and 39 litres)
- R = Roll Cage

Ordering Example

Model Number: **ZA4208MX-FHK**
ZA4208MX-FHK is an air operated pump with a 3-way, 2-position manual valve, 6,8 litres reservoir, filter, heat exchanger and skid bar.

ZA4 Series



Reservoir Capacity:

4,6 - 39 litres

Flow at Rated Pressure:

1,3 l/min

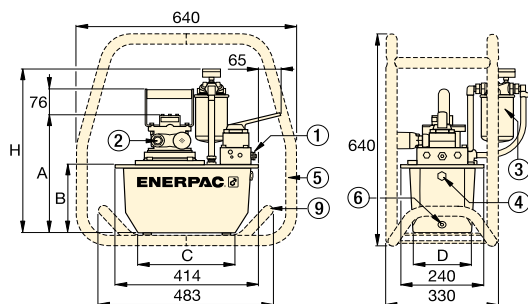
Air Consumption:

2840 l/min

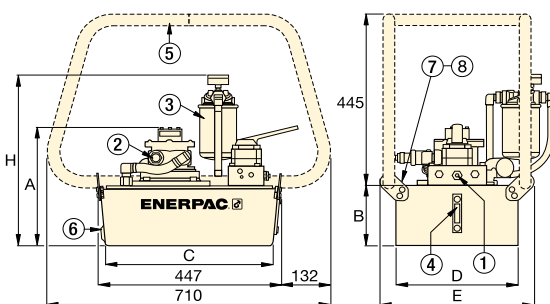
Maximum Operating Pressure:

700 bar


- ① User adjustable relief valve on all manual valves. 3/8" NPTF on A and B ports; 1/4" NPTF on auxiliary ports.
- ② Air inlet 1/2" NPTF
- ③ Return Line Filter (optional)
- ④ Oil Sight Gauge
- ⑤ Roll Cage (optional)
- ⑥ Oil Drain
- ⑦ Lifting eyes (optional)
- ⑧ Handles
- ⑨ Skid Bar (Modelnr. SBZ4) (optional)



ZA4-Series Pumps with 4,6 - 6,8 litres reservoir



ZA4-Series Pumps with 9,8, 19,8 and 39 litres reservoir

	Sound Level	Motor Size	Dimensions (mm)							Model Number
	(dBA)	(kW)	A	B	C	D	E	H	(kg)	
	80 - 95	3,0	295	142	279	152	–	429	27	ZA4004NX
	80 - 95	3,0	295	142	279	152	–	429	30	ZA4204MX
	80 - 95	3,0	356	203	279	205	–	490	34	ZA4308MX
	80 - 95	3,0	330	180	414	421	500	467	51	ZA4610MX
	80 - 95	3,0	295	142	279	152	–	429	31	ZA4404MX
	80 - 95	3,0	356	203	279	205	–	490	35	ZA4408MX
	80 - 95	3,0	305	155	419	305	384	442	40	ZA4810MX
	80 - 95	3,0	330	180	414	421	500	467	52	ZA4420MX
	80 - 95	3,0	419	269	399	505	584	556	75	ZA4440MX

OIL FLOW VERSUS PRESSURE

at 7 bar air & 2000 l/min air consumption

