



## Directional Control Valves ND 4

electrically-operated for cable socket  
max. operating pressure 500 bar (350 bar)



### Technical data

Type	poppet valve hermetically sealed
Type of mounting	4 screws M 6
Tightening torque	9.5 Nm
Type of connection	Mounting plate see reverse

### Hydraulic characteristics

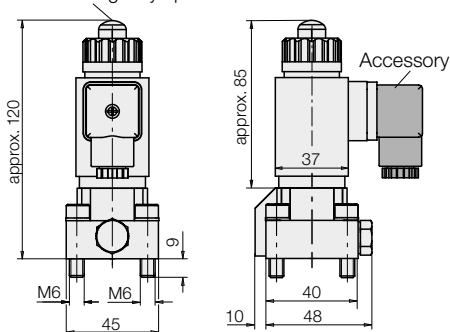
Adm. operating pressure	500 bar
Adm. flow rate	8 l/min
Direction of flow	only in direction of arrow as in symbol
Hydraulic oil	HLP 22

### Electrical characteristics

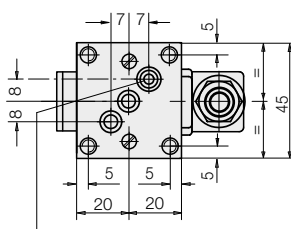
Nominal voltage +5 % – 10 %	24 V DC
Inrush power	18 W
Holding power	18 W
Power consumption	18 W
Make time	100 ms
Brake time	50 ms
Max. cycles	2000/h
Duty cycle	100 % ED
Code class	IP 54
Connection	for cable socket EN175301-803 Form A

### 2/2 and 3/2 directional control valves

Manual emergency operation



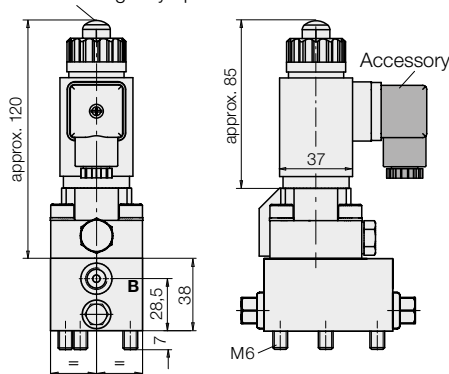
View from below



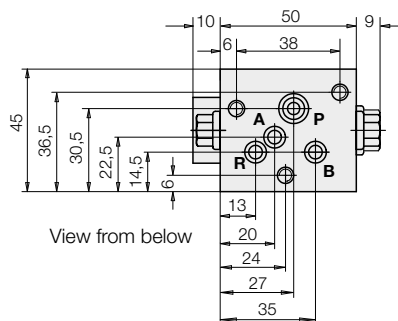
Bore hole for plug-in check valve

### 4/2 directional control valve

Manual emergency operation

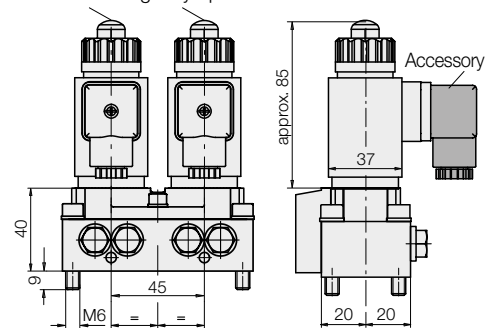


View from below

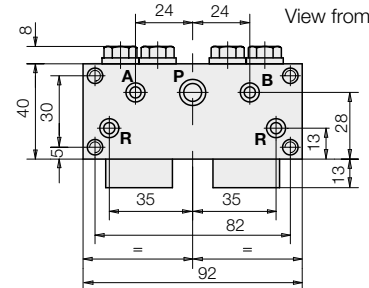


### 4/3 directional control valve\*

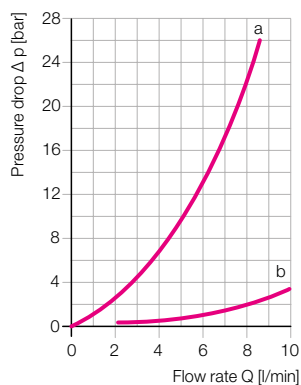
Manual emergency operation



View from below



$\Delta p$ -Q characteristic curve for kinematic Viscosity of  $53 \times 10^{-6} \text{ m}^2/\text{s}$  (HLP 22 at 20 °C)



a = solenoid valve  $P \rightarrow A$  and  $A \rightarrow R$   
b = plug-in check valve

\* max. 350 bar

### Denomination

3/2 directional control valve GZ 3-1

3/2 directional control valve GZ 3-1 R

2/2 directional control valve GZ 2-1

2/2 directional control valve GS 2-1

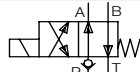
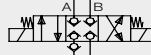
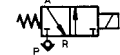
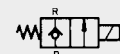
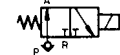
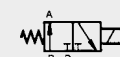
3/2 directional control valve G 3-1

3/2 directional control valve G 3-1 R

4/3 directional control valve G 22-1\*

4/2 directional control valve G 4-1R

### Symbol



### with socket adapter Part no.

**2361520**

**2361620**

**2361621**

**2361622**

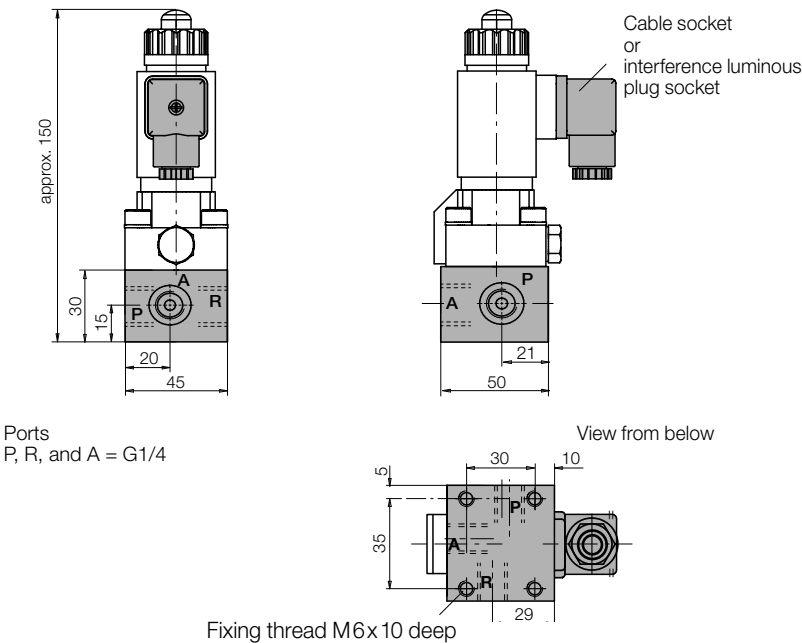
**2362520**

**2362620**

**2361522**

**2362520  
+2360114**

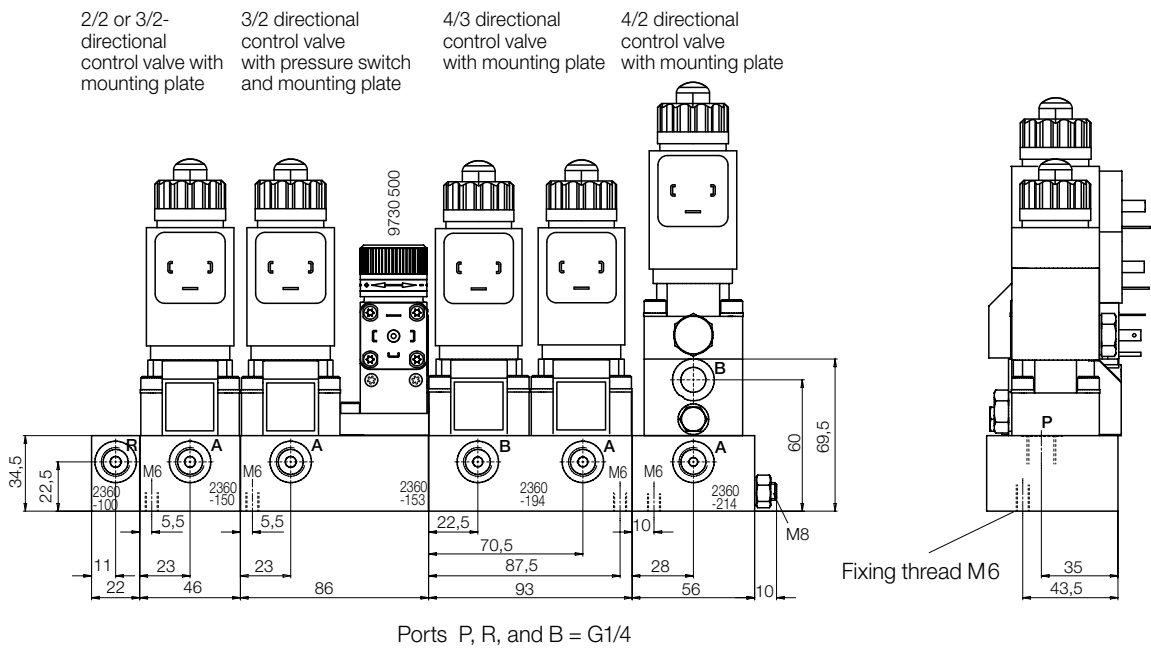
Single mounting plate for 2/2 and 3/2 directional control valve



Accessories	Part no.
Cable socket as per EN175301-803 Form A	3141 012
Interference luminous plug socket	3141 477
Solenoid coil 24V/18W (spare part)	3142 320
Plug-in check valve (spare part)	3815 002
Single mounting plate	3534 039

Sealing (spare part)	Ports	O-ring	Part no.
2/2 and 3/2 directional control valve	P and R	8 x 1.5	3000 343
	A	5 x 1.5	3000 340
4/2 and 4/3 directional control valve	P	8 x 1.5	3000 343
	A, B and R	5 x 1.5	3000 340

Example for series mounting plate combination



- Example of ordering:**
- 1 off mounting plate combination consisting of:
  - 1 off input plate  
**Part no. 2360 100**
  - 1 off series mounting plate  
**Part no. 2360 150**
  - 1 off series mounting plate  
**Part no. 2360 153**
  - 1 off series mounting plate  
**Part no. 2360 194**
  - 1 off series mounting plate  
**Part no. 2360 214**
  - 1 off threaded rod M8 x 1000\*  
**Part no. 3300 343**
- \* Minimum length = 2 x total length of all mounting plates + 40 mm

