

## Pressure Relief Valves

max. operating pressure 500 bar

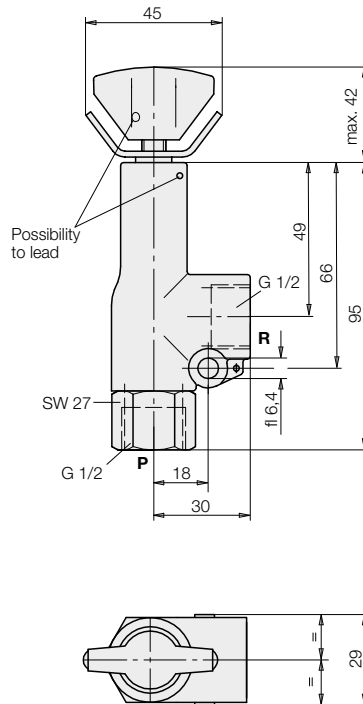


## Pressure relief valve

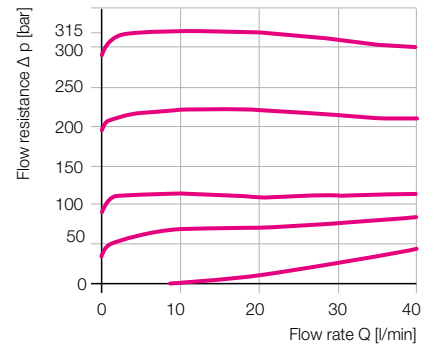
Protection against exceeding the max. operating pressure of the fixture (safety valve) or limiting of working pressures.

|                  |                                      |
|------------------|--------------------------------------|
| Type             | poppet valve,<br>directly controlled |
| Type of mounting | installation in line                 |
| Port size        | G 1/2                                |
| Weight, approx.  | 0.3 kg                               |

### Pipe thread



$\Delta p$ - $Q$  characteristic curve



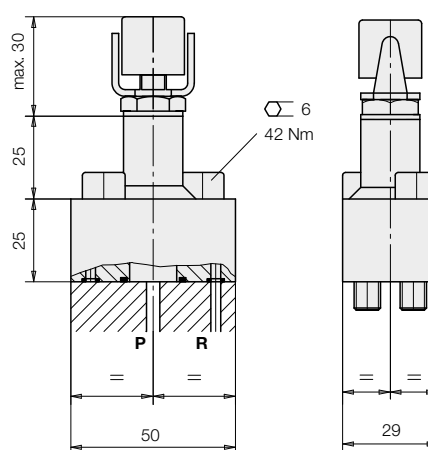
Oil viscosity during measurement 50 mm<sup>2</sup>/s

### Hydraulic characteristics

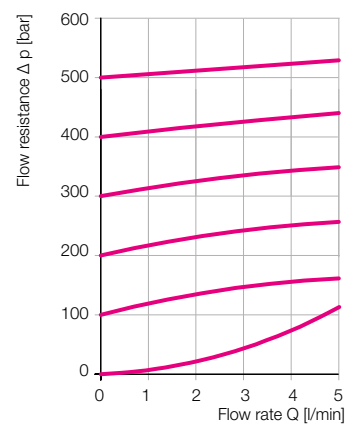
|                         |         |                |
|-------------------------|---------|----------------|
| Range of adjustment     | [bar]   | 0...500        |
| Oil temperature         | [°C]    | -25...+80      |
| Max. flow rate          | [l/min] | 40             |
| Max. operating pressure |         |                |
| Port P                  | [bar]   | 500            |
| Port R                  | [bar]   | 20             |
| <b>Part no.</b>         |         | <b>2952521</b> |
| Max. operating pressure |         |                |
| Ports P and R           | [bar]   | 500            |
| <b>Part no.</b>         |         | <b>2952525</b> |



### Manifold-mounting connection



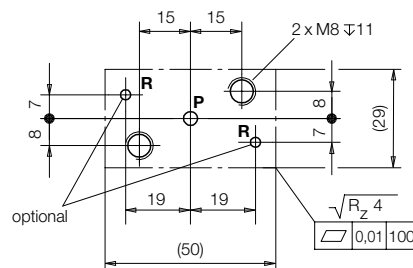
$\Delta p$ -Q characteristic curve



|                  |                                      |           |
|------------------|--------------------------------------|-----------|
| Type             | poppet valve,<br>directly controlled |           |
| Type of mounting | flange type                          |           |
| Port size        | ND 3                                 |           |
| Weight, approx.  | 0.3 kg                               |           |
| Connection       | O-ring                               |           |
| P (Ø4)           | 17.12 x 2.62                         | NBR 90 Sh |
| R (2 x Ø3)       | 4.47 x 1.78                          | NBR 90 Sh |

O-rings and screws are included in the delivery!

## Connecting scheme



### Hydraulic characteristics

|                         |         |                |
|-------------------------|---------|----------------|
| Range of adjustment     | [bar]   | 20...500       |
| Oil temperature         | [°C]    | -25...+80      |
| Max. flow rate          | [l/min] | 5              |
| Max. operating pressure |         |                |
| Port P                  | [bar]   | 500            |
| Port R                  | [bar]   | 400            |
| <b>Part no.</b>         |         | <b>2952010</b> |