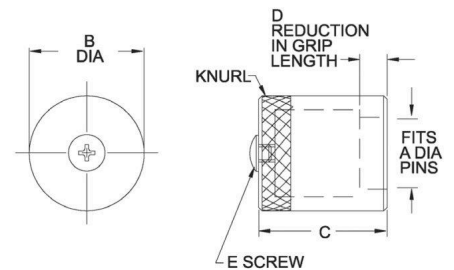
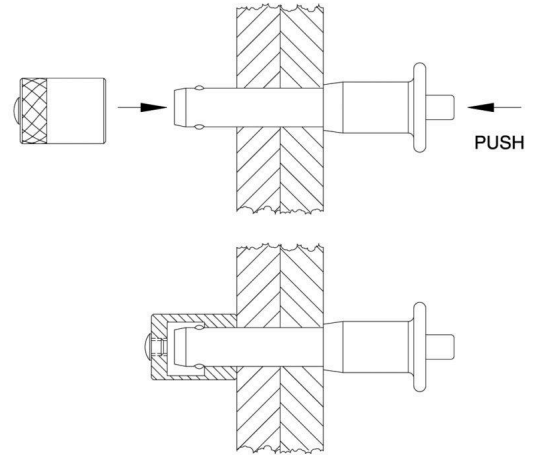


# BALL LOCK RECEIVER CAPS

300- SERIES STAINLESS STEEL, PASSIVATED



Receiver Caps are ideal for securing Ball Lock Pins used in clevis applications, especially when the through-hole has excess clearance. The Receiver Cap's inside diameter fits the Ball Lock Pin exactly, and is stepped to provide a perfect locking surface for the balls. Available to fit Ball Lock Pin diameters from 3/16 to 1" (5 to 20mm in metric). Made of 300-series stainless steel. Please note, using a Receiver Cap reduces the Ball Lock Pin's effective grip length slightly (see D dimension).



Receiver Caps are tapped to allow fastening the eyelet end of a standard Ball Lock Pin Cable Assembly (12" long) or Nylon Lanyard (10" long), and include a fastening screw.

## INCH

PART NO.	A DIA	B DIA	C	D	E
CL-3-BLR-S	3/16 (#10)	.50	.72	1/4	#10-32
CL-4-BLR-S	1/4	.50	.81		
CL-5-BLR-S	5/16	.63	.81		
CL-6-BLR-S	3/8	.75	1.16		
CL-7-BLR-S	7/16	.75	1.16	1/2	
CL-8-BLR-S	1/2	.88	1.25		
CL-9-BLR-S	9/16	.88	1.25		
CL-10-BLR-S	5/8	1.00	1.31		
CL-12-BLR-S	3/4	1.25	1.45		
CL-14-BLR-S	7/8	1.50	1.48		
CL-16-BLR-S	1	1.50	1.69		

## METRIC

PART NO.	A DIA (mm)	B DIA (mm)	C (mm)	D (mm)	E THREAD	THREAD PITCH
CL-5-BLR-S	5	12.5	24	10	M5	.8
CL-6-BLR-S	6	12.5	24			
CL-8-BLR-S	8	16	25			
CL-10-BLR-S	10	19	26			
CL-12-BLR-S	12	22	29			
CL-16-BLR-S	16	25	32			
CL-20-BLR-S	20	32	38			

# CABLE

GALVANIZED STEEL OR STAINLESS STEEL, NYLON COATED (GREEN)



Cable Sizes

High-strength stranded wire cable with a green nylon coating. Choice of four cable diameters. Cable size 1 is made of stainless steel. Sizes 2, 3, and 4 are available in either galvanized steel or stainless steel. Cable is available in cut pieces (inch or mm), in bulk lengths, (feet or meters, 10 ft/ 3m minimum), or in 1000-ft rolls. Cut pieces are held to a  $\pm 1/4"$  length tolerance up to 24" long. Examples:

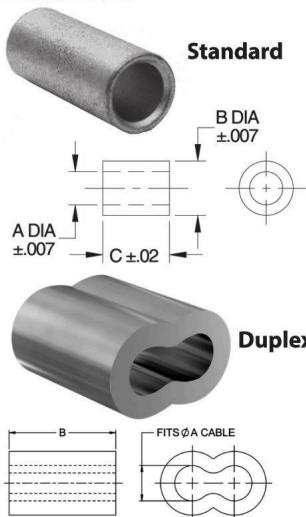
CL-2-C-12.0 (Cut piece, #2 cable, 12" long)



CABLE SIZE	MATERIAL	PART NO.	LENGTH	D DIA		CONSTRUCTION	BREAKING STRENGTH (LBS)
				COATED	WIRE		
1	STAINLESS STEEL	CL-1-C-50FT	50 Feet	.044	.024	1x7	80
		CL-1-C-100FT	100 Feet				
		CL-1-C-250FT	250 Feet				
		CL-1-C-500FT	500 Feet				
		CL-1-C-1000FT	1000 Feet				
2	STEEL	CL-2-C-50FT	50 Feet	.062	.047	7x7	270
		CL-2-C-100FT	100 Feet				
		CL-2-C-250FT	250 Feet				
		CL-2-C-500FT	500 Feet				
		CL-2-C-1000FT	1000 Feet				
	STAINLESS STEEL	CL-2-SC-50FT	50 Feet				
		CL-2-SC-100FT	100 Feet				
		CL-2-SC-250FT	250 Feet				
		CL-2-SC-500FT	500 Feet				
		CL-2-SC-1000FT	1000 Feet				
3	STEEL	CL-3-C-50FT	50 Feet	.094	.062	7x7	480
		CL-3-C-100FT	100 Feet				
		CL-3-C-250FT	250 Feet				
		CL-3-C-500FT	500 Feet				
		CL-3-C-1000FT	1000 Feet				
	STAINLESS STEEL	CL-3-SC-50FT	50 Feet				
		CL-3-SC-100FT	100 Feet				
		CL-3-SC-250FT	250 Feet				
		CL-3-SC-500FT	500 Feet				
		CL-3-SC-1000FT	1000 Feet				
4	STEEL	CL-4-C-50FT	50 Feet	.187	.125	7x19	800
		CL-4-C-100FT	100 Feet				
		CL-4-C-250FT	250 Feet				
		CL-4-C-500FT	500 Feet				
		CL-4-C-1000FT	1000 Feet				
	STAINLESS STEEL	CL-4-SC-50FT	50 Feet				
		CL-4-SC-100FT	100 Feet				
		CL-4-SC-250FT	250 Feet				
		CL-4-SC-500FT	500 Feet				
		CL-4-SC-1000FT	1000 Feet				

# FERRULES

STANDARD: COPPER, ELECTRO TIN PLATED  
DUPLEX: COPPER



Ferrules are used to crimp a loop on the end of our nylon-coated cable. These standard round Ferrules are available in four diameters to fit our four standard cable sizes. An extra-long version is optionally available for #2 and #3 cable sizes, to allow double crimping. Ferrules may be slightly elliptical (partially crimped) at our option.

Duplex Ferrules are used exclusively to make our Load-Rated Cable Assemblies. These ferrules require a specific crimping procedure, with a specific crimping tool and gauge to guarantee the assembly load rating. Duplex Ferrules are available in two sizes, to fit #2 and #3 cable.

## STANDARD FERRULES

PART NO.	FITS CABLE	A	B	C
CL-1-F	SIZE 1	.094	.154	.315
CL-2-F	SIZE 2	.138	.213	.335
CL-4-F				.591
CL-3-F	SIZE 3	.185	.276	.374
CL-5-F				.827
CL-6-F	SIZE 4	.378	.520	1.260

## DUPLEX FERRULES

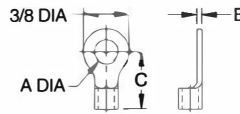
PART NO.	FITS CABLE		B LENGTH
	SIZE	A DIA	
CL-2-DF	#2	.062	3/8
CL-3-DF	#3	.094	3/8

# TERMINALS

COPPER, ELECTRO TIN PLATED



Terminals are for crimping on our nylon-coated cable, to allow attaching the end with a screw. Available for #2 and #3 cable.



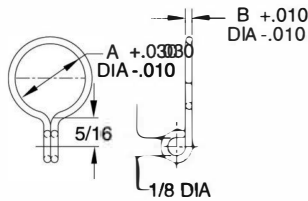
PART NO.	FITS CABLE	A		B	C
		A DIA	SCREW SIZE		
CL-194-TERM-2	SIZE 2	.21	#10 (or M5)	.03	15/32
CL-129-TERM	SIZE 3	.13	#5 (or M3)	.04	19/32
CL-194-TERM		.21	#10 (or M5)	.04	9/16

# CABLE RINGS

STEEL: SPRING STEEL, BLACK OXIDE FINISH  
STAINLESS: 300-SERIES STAINLESS STEEL



Cable Rings allow attaching Cable Assemblies to a diameter or radial groove. Can be used with cable sizes #1, #2, and #3. Available in steel or stainless steel.



PART NO. STEEL	PART NO. STAINLESS	A DIA	B WIRE DIA	
			STEEL	STAINLESS
CL-2-KR	CL-2-SKR	1/8 (also 3mm)	.045	.062
CL-3-KR	CL-3-SKR	3/16 (also 4&5mm)		
CL-4-KR	CL-4-SKR	1/4 (also 6&7mm)		
CL-5-KR	CL-5-SKR	5/16 (also 8mm)		
CL-6-KR	CL-6-SKR	3/8 (also 9&10mm)		
CL-7-KR	CL-7-SKR	7/16 (also 11mm)		
CL-8-KR	CL-8-SKR	1/2 (also 12&13mm)		
CL-9-KR	CL-9-SKR	9/16 (also 14&15mm)		
CL-10-KR	CL-10-SKR	5/8 (also 16mm)		
CL-11-KR	CL-11-SKR	11/16 (also 17&18mm)		
CL-12-KR	CL-12-SKR	3/4 (also 19&20mm)		
CL-13-KR	CL-13-SKR	13/16 (also 21mm)		
CL-14-KR	CL-14-SKR	7/8 (also 22 or 23mm)		
CL-15-KR	CL-15-SKR	15/16 (also 24mm)		
CL-16-KR	CL-16-SKR	1 (also 25&26mm)		
CL-17-KR	CL-17-SKR	1-1/16 (also 27mm)		
CL-18-KR	CL-18-SKR	1-1/8 (also 28&29mm)		
CL-19-KR	CL-19-SKR	1-3/16 (also 30&31mm)		
CL-20-KR	CL-20-SKR	1-1/4 (also 32mm)		
CL-21-KR	CL-21-SKR	1-5/16 (also 33&34mm)		
CL-22-KR	CL-22-SKR	1-3/8 (also 35 mm)		
CL-23-KR	CL-23-SKR	1-7/16 (also 36&37mm)		
CL-24-KR	CL-24-SKR	1-1/2 (also 38mm)		

# CABLE TABS

ALUMINUM: 6061 ALUMINUM ALLOY, CLEAR ANODIZED. STAINLESS: 300-SERIES STAINLESS STEEL, PASSIVATED

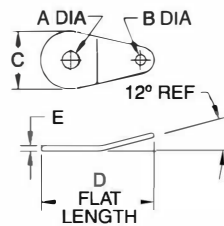


Teardrop



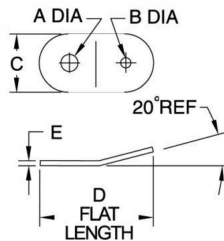
Rectangular

Cable Tabs attach to our nylon-coated cable, to allow attaching the end with a screw. Can be used with cable sizes #1, #2, and #3. Available in two shapes, teardrop and rectangular. Available in aluminum and stainless steel.



## TEARDROP

PART NO. ALUMINUM	PART NO. STAINLESS STEEL	FITS CABLE	A		B DIA	C	D	E
			DIA	SCREW SIZE				
CL-129-TAB-A	CL-129-TAB-S	SIZES 1 TO 3	.13	#5 (or M3)	.13	.69	1.31	.06
CL-194-TAB-A	CL-194-TAB-S		.20	#10 (or M4)				
CL-281-TAB-A	CL-281-TAB-S		.28	1/4 (or M6)				



## RECTANGULAR

PART NO. ALUMINUM	PART NO. STAINLESS STEEL	FITS CABLE	A		B DIA	C	D	E
			DIA	SCREW SIZE				
CL-129-TABR-2-A	CL-129-TABR-2-S	SIZES 1 TO 2	.13	#5 (or M3)	.09	1/2	1.14	.06
CL-194-TABR-2-A	CL-194-TABR-2-S		.20	#10 (or M4)				
CL-281-TABR-2-A	CL-281-TABR-2-S	SIZES 1 TO 3	.28	1/4 (or M6)				
CL-194-TABR-3-A	CL-194-TABR-3-S		.20	#10 (or M4)	.19	1/2	1.14	.06
CL-281-TABR-3-A	CL-281-TABR-3-S		.28	1/4 (or M6)				

# CRIMPING TOOLS

STEEL WITH PLASTIC HANDGRIPS



**Standard**

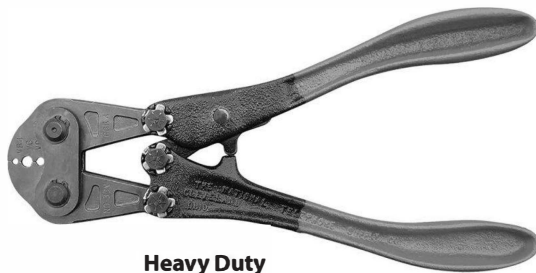
Plier tool for manually crimping ferrules on our nylon-coated cable. Crimps ferrules on either #1 or #2 cable. Heavier cable sizes require power crimping and should be ordered finish-crimped from the factory whenever possible.

## STANDARD CRIMPING TOOL

PART NO.	FOR CABLE	FOR FERRULES
CL-1-CT	SIZE 1	CL-1-F
	SIZE 2	CL-2-F CL-4-F

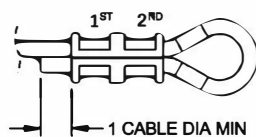
# HEAVY-DUTY CRIMPING TOOLS

FORGED STEEL

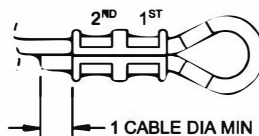


**Heavy Duty**

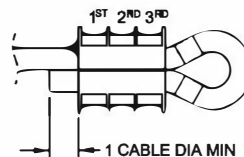
Heavy-Duty Crimping Tools are rugged hand tools engineered for the toughest field conditions. Manufactured from forged alloy steel with hardened working surfaces. These tools are designed to effectively crimp Duplex Ferrules by creating maximum holding around the wire, resulting in strong, reliable connections. Jaws have multiple marked pressing grooves to match the different ferrule sizes. CL-2-DF requires two crimps per ferrule, while CL-3-DF requires three crimps per ferrule.



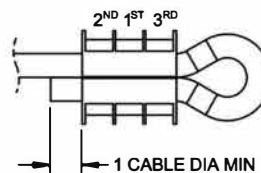
**Cable #2**  
**Two Crimps**  
(Sequence Option 1)



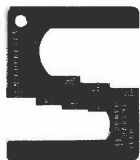
**Cable #2**  
**Two Crimps**  
(Sequence Option 2)



**Cable #3**  
**Three Crimps**  
(Sequence Option 1)



**Cable #3**  
**Three Crimps**  
(Sequence Option 2)



**Crimp Gauge**  
(Included with  
Crimping Tool)

## HEAVY-DUTY CRIMPING TOOL

PART NO.	CRIMPING GROOVE IN JAWS
CL-2-CTDF	VB4 for Duplex Ferrule CL-2-DF VG for Duplex Ferrule CL-3-DF



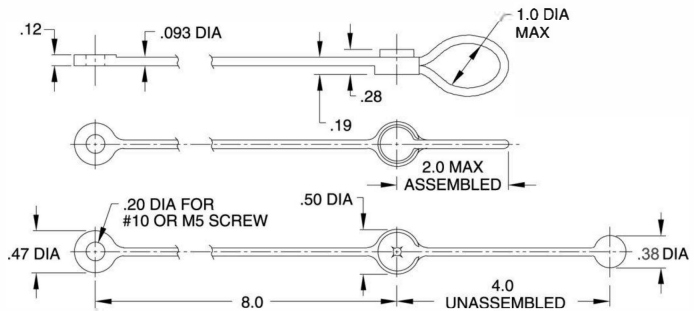
# NYLON LANYARDS

ZYTEL® HIGH-STRENGTH NYLON, BLACK



High-strength nylon lanyard with one eyelet end and one loop end. The eyelet end can be fastened with a screw. The loop end is supplied open – simply snap together to create a permanent assembly. Snap assembly allows on-site attachment without a crimping tool. These economical lanyards are ideal for applications where the attached item is occasionally removed, by cutting the lanyard, and replaced.

Available in one length (10" assembled). Eyelet accepts a #10 or M5 screw. A minimum pass-through diameter of 3/8" is required for attachment. Made in USA.



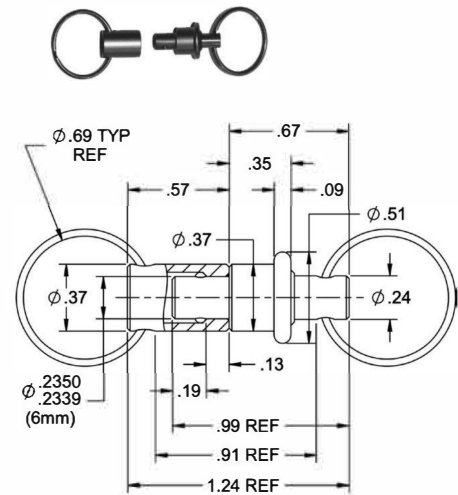
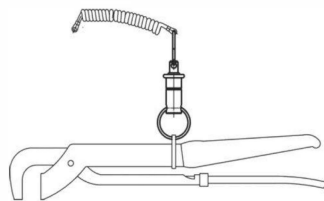
PART NO.	LANYARD DIA	LENGTH (ASSEMBLED)	EYELET	
			ID	FOR SCREW
CL-1-NL-10	.093	10	.20	#10 OR M5

# BALL LOCK COUPLING RINGS

PIN AND RECEIVER: 303 STAINLESS STEEL  
RINGS, SPRING, AND BALLS: STAINLESS STEEL



This tiny quick-release coupling assembly incorporates a rugged, high-quality Ball Lock Pin mechanism. Allows quick, reliable connection and disconnection of items attached to a cable assembly. Simply press the button to release. One half of the coupling ring is essentially a small Ball Lock Pin with a split ring through the push button; the other half is a mating receiver, also with a split ring through it. The coupling is positive locking until released by pushing the button, which moves the center spindle forward to allow the locking balls to retract. Made of 300-series stainless steel for excellent corrosion resistance. Note: photo at left is shown actual size.



PART NO.	PIN DIA	RATED LOAD CAPACITY (LBS)	MAXIMUM OPERATING TEMPERATURE
CLM-6-BLCR-S	6MM	7	480°F