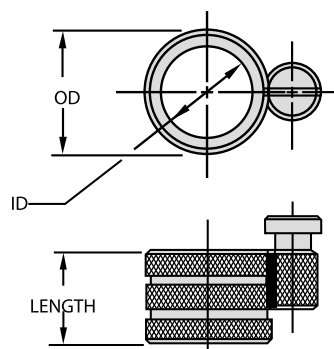


EZ-CAST LINER BUSHINGS

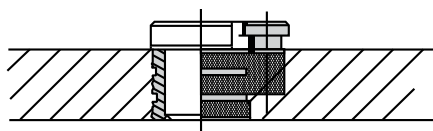


EZ



APPLICATIONS:

Another liner for cast-in-place or potted installation, used to hold SF renewable drill bushings. Unlike diamond-knurl unlock liners, EZ-cast liners hold either the “slip” or “fixed” side of an SF bushing, since they include an integral lockscrew holder. Diamond-knurled OD provides superior holding strength against both rotational and axial forces. Since the bushing’s OD is not ground, keep the ID accurately located during casting or potting to ensure accuracy in the finished tool.



ORDERING EXAMPLE:

EZ-32-8 Standard inch liner bushing

STANDARD LINER ID TOLERANCES:

5/16"	+0.001/+0.004
1/2"	+0.002/+0.005
3/4"	+0.003/+0.006
1"	+0.004/+0.007

ID RANGE	OD	LENGTH	PART NO.
5/16 .3126-.3129	1/2 .525-.510	1/2	EZ-32-8
		3/4	EZ-32-12
		1	EZ-32-16
1/2 .5002-.5005	3/4 .775-.760	1/2	EZ-48-8
		3/4	EZ-48-12
		1	EZ-48-16
		1-3/8	EZ-48-22
3/4 .7503-.7506	1 1.035-1.010	1/2	EZ-64-8
		3/4	EZ-64-12
		1	EZ-64-16
		1-3/8	EZ-64-22
1 1.0004-1.0007	1-3/8 1.410-1.385	3/4	EZ-88-12
		1	EZ-88-16
		1-3/8	EZ-88-22