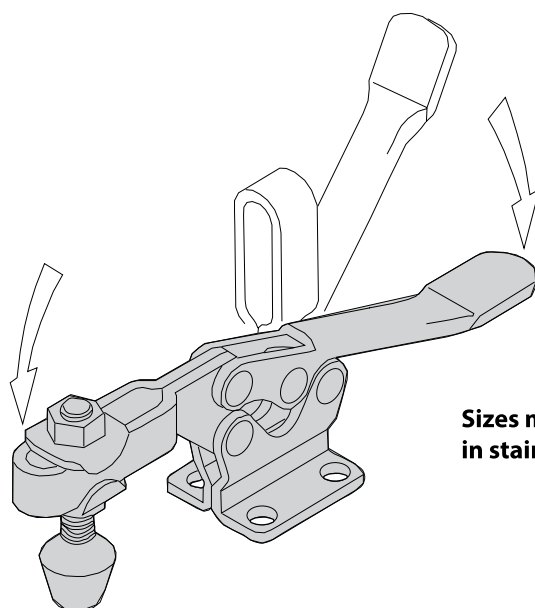
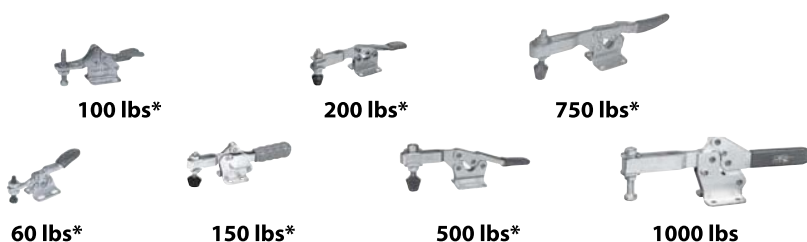


# HORIZONTAL-HANDLE TOGGLE CLAMPS



Sizes marked \* are also available in stainless steel.



## Standard HTC Design

Most-popular and widest-range series of horizontal-handle hold-down clamps. Available in seven sizes, the smaller ones with a comfortable finger grip. Most sizes are available with either a flanged base or a straight base. Choice of solid arm, or open arm for spindle adjustment.



750 lbs

## Automatically Adjusting

Self-adjusting clamp automatically compensates for different workpiece heights without resetting the spindle. Clamping force is always consistent after setting once.



250 lbs



625 lbs



850 lbs

## Low-Arm TC Design

Simple, classic-design horizontal-handle clamps. Available in three sizes, with either a flanged base or a straight base.



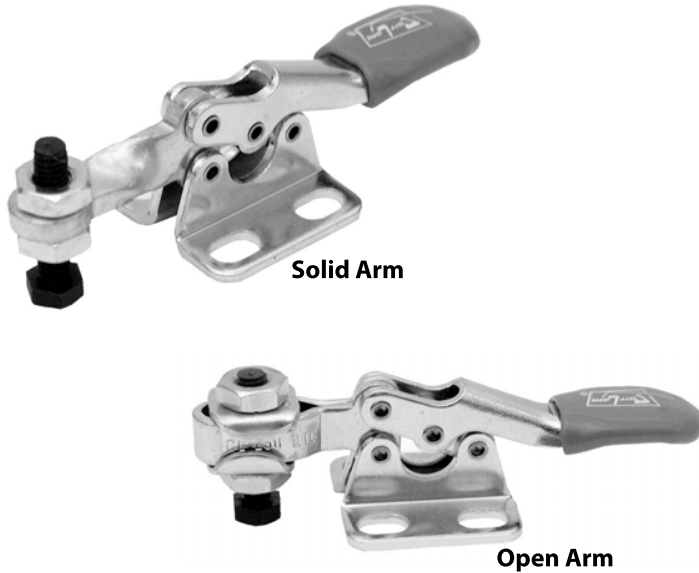
375 lbs

## Extra-Wide Opening

Arm opens a full 185° for maximum loading clearance. Unique up-then-down handle motion. Handle locks at a 60° downward angle. Dual flanged bases allow mounting on either horizontal or vertical surfaces. Choice of solid arm, or open arm for spindle adjustment.

# HORIZONTAL-HANDLE TOGGLE CLAMPS

INFO+: SEE PAGE 415 FOR MATERIAL SPECIFICATIONS



**CL-150-HTC**

Solid Arm, Flanged Base

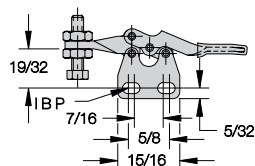
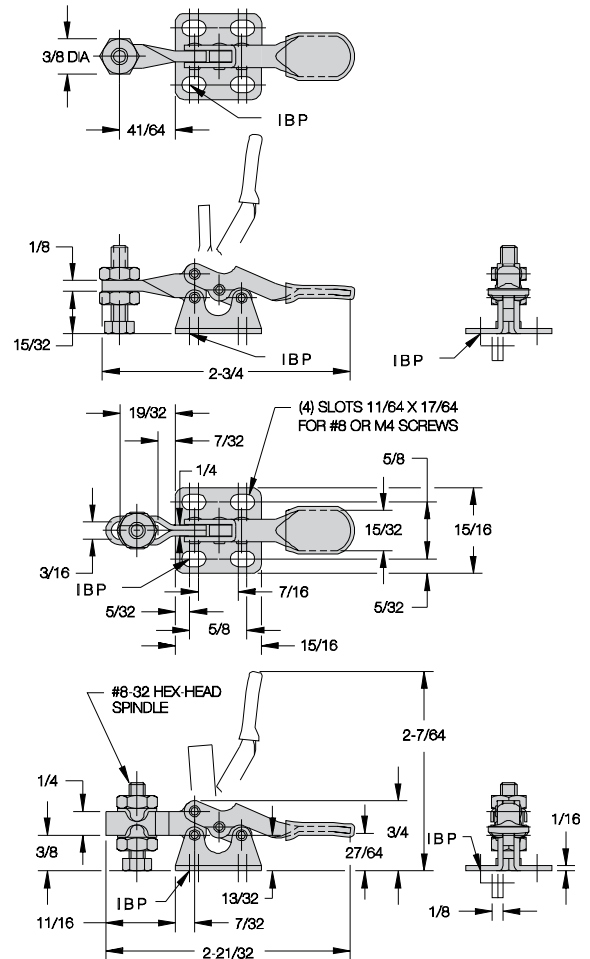
**CL-250-HTC**

Open Arm, Flanged Base

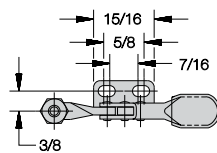
Smallest hold-down clamp available. Choose either a solid arm, or an open arm for spindle adjustment. Arm opens 90° while handle moves 80°. Supplied with #8-32 nylon hex-head spindle CL-832203-SA. Open-arm versions also include (2) CL-832-TW flanged washers. Shipping weight 0.1 lbs.

**Holding capacity:**

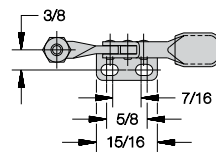
**60 lbs**



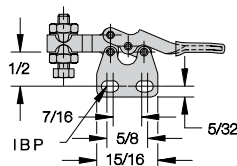
**CL-151-HTC**  
Solid Arm  
Straight Base



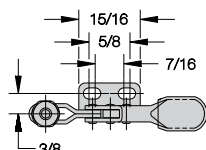
**CL-152-HTC**  
Solid Arm  
Right Flange



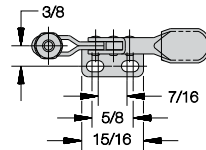
**CL-153-HTC**  
Solid Arm  
Left Flange



**CL-251-HTC**  
Open Arm  
Straight Base



**CL-252-HTC**  
Open Arm  
Right Flange



**CL-253-HTC**  
Open Arm  
Left Flange

**Also available in stainless steel...**



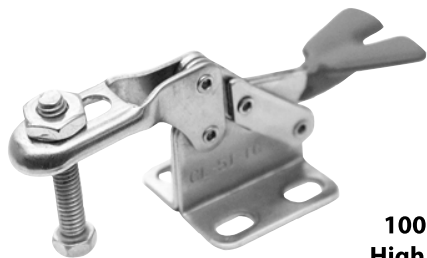
**CL-150-HTC-S**



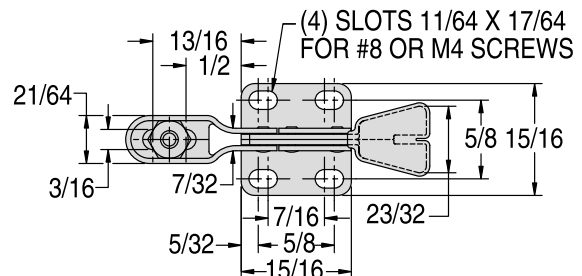
**CL-250-HTC-S**

# HORIZONTAL-HANDLE TOGGLE CLAMPS

INFO+: SEE PAGE 415 FOR MATERIAL SPECIFICATIONS



**100 lbs  
High Arm**



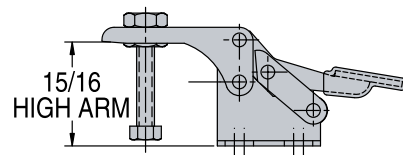
## CL-53-TC

### High Arm, Flanged Base

Miniature stainless steel clamp with open arm for spindle adjustment. Perfect for electronics fixturing and other light-duty application. Arm opens 90° while handle moves 90°. Supplied with #8-32 stainless hex-head spindle CL-832203-SA-S. Shipping weight 0.1 lbs.

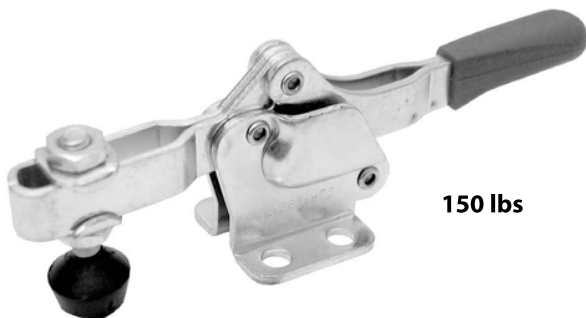
**Holding capacity:**

**100 lbs**

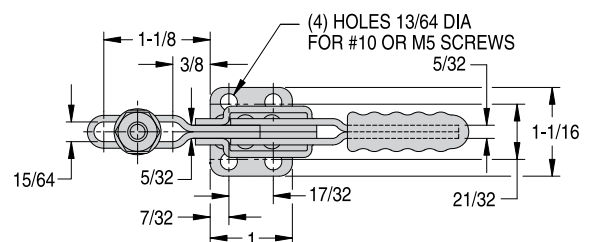


# HORIZONTAL-HANDLE TOGGLE CLAMPS

INFO+: SEE PAGE 415 FOR MATERIAL SPECIFICATIONS



**150 lbs**



## CL-260-HTC

### Open Arm, Flanged Base

An extremely powerful clamp for its small size. Open arm allows spindle adjustment. Arm opens 90° while handle moves 75°. Supplied with #10-32 flat-cushion spindle CL-316112-FC and (2) CL-3166-TW flanged washers. Shipping weight 0.2 lbs.

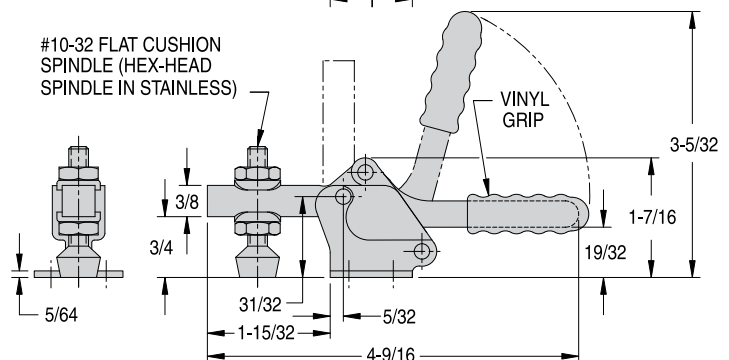
**Holding capacity:**

**150 lbs**

Also available in stainless steel...

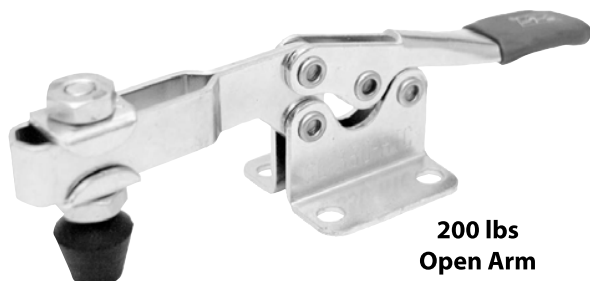


**CL-260-HTC-S**



# HORIZONTAL-HANDLE TOGGLE CLAMPS

INFO+: SEE PAGE 415 FOR MATERIAL SPECIFICATIONS



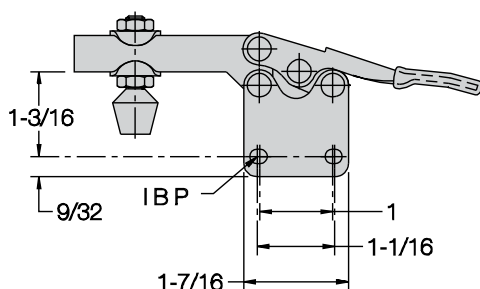
**200 lbs  
Open Arm**

## CL-350-HTC Open Arm, Flanged Base

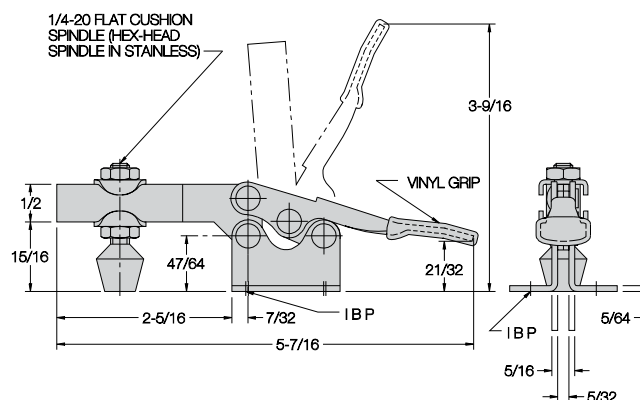
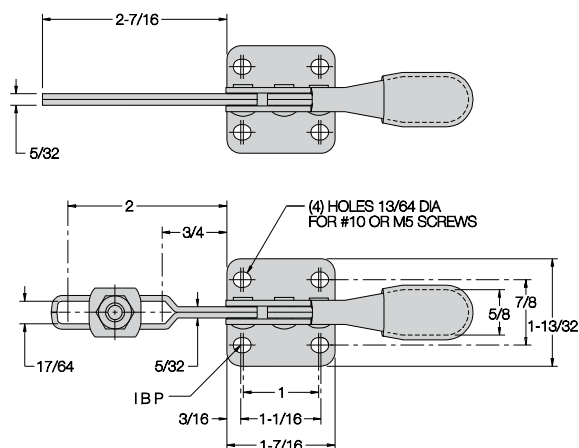
Popular medium-duty clamp with an open arm for spindle adjustment. Arm opens 90° while handle moves 80°. Supplied with 1/4-20 short flat-cushion spindle CL-14112-FC and (2) CL-147-TW flanged washers. Shipping weight 0.3 lbs.

**Holding capacity:**

**200 lbs**



**CL-351-HTC  
Open Arm  
Straight Base**



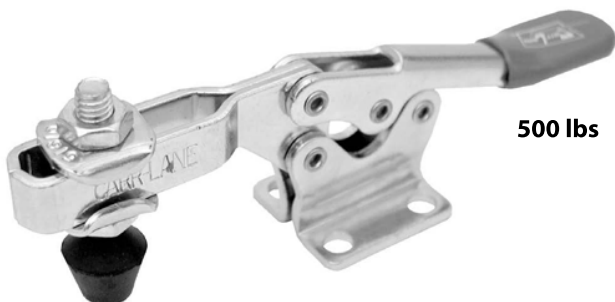
Also available in stainless steel...



**CL-350-HTC-S**

# HORIZONTAL-HANDLE TOGGLE CLAMPS

INFO+: SEE PAGE 415 FOR MATERIAL SPECIFICATIONS



500 lbs

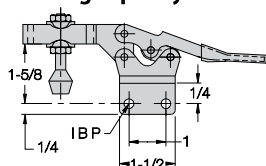
## CL-450-HTC

Open Arm, Flanged Base

Strong-yet-compact horizontal-handle clamp, with open arm for spindle adjustment. Arm opens 90° while handle moves 65°. Supplied with 5/16-18 short flat-cushion spindle CL-518208-FC and (2) CL-51610-TW flanged washers. Shipping weight 0.6 lbs.

Holding capacity:

500 lbs

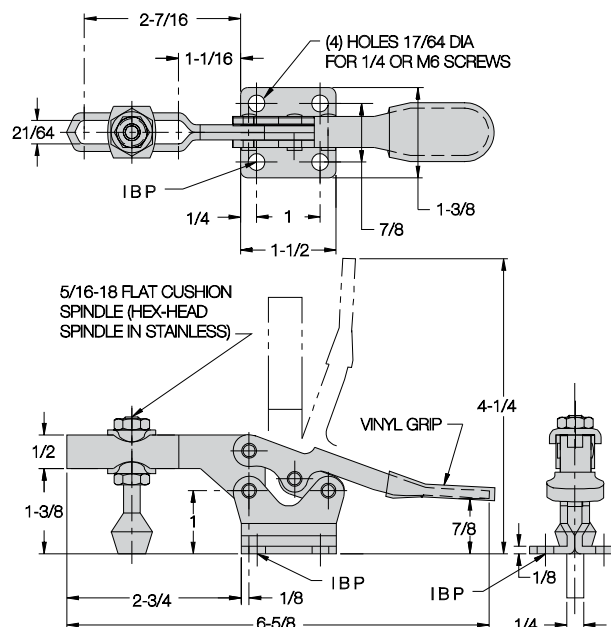


CL-451-HTC  
Straight Base

Also available in stainless steel...

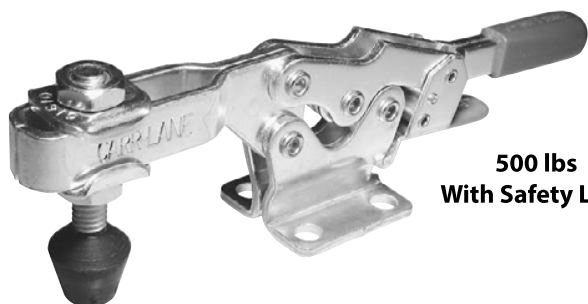


CL-450-HTC-S



# HORIZONTAL-HANDLE TOGGLE CLAMPS

INFO+: SEE PAGE 415 FOR MATERIAL SPECIFICATIONS



500 lbs  
With Safety Lock

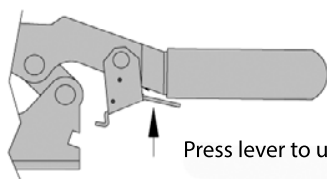
## CL-450-LHTC

Open Arm, Flanged Base

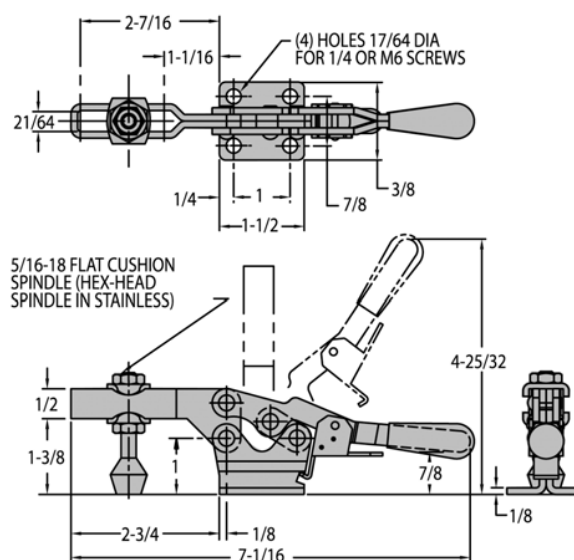
Same as the toggle clamp shown above, except with our unique safety-lock feature. This safety lock automatically engages when the clamp is closed, then remains locked until manually disengaged by pressing the lever, then reopens. This prevents the clamp from being accidentally opened by bumping the handle. Shipping weight 0.7 lbs.

Holding capacity:

500 lbs



Press lever to unlock.



# HORIZONTAL-HANDLE TOGGLE CLAMPS

INFO+: SEE PAGE 415 FOR MATERIAL SPECIFICATIONS



750 lbs

## CL-550-HTC Open Arm, Flanged Base

Heavy-duty clamp with open arm for spindle adjustment. Arm opens 90° while handle moves 55°. Supplied with 3/8-16 short flat-cushion spindle CL-38212-FC and (2) CL-3811-TW flanged washers. Shipping weight 1.5 lbs.

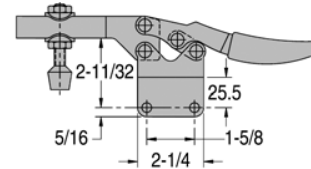
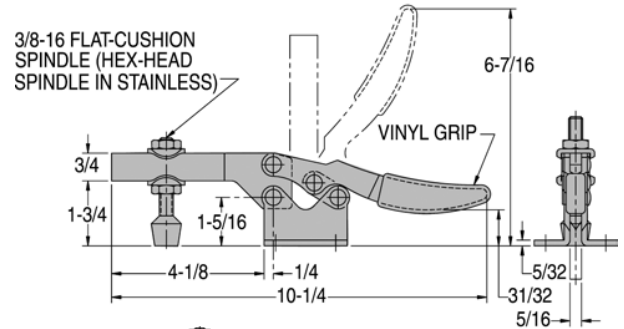
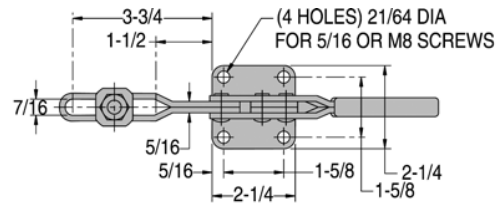
Holding capacity:

750 lbs

Also available in stainless steel...



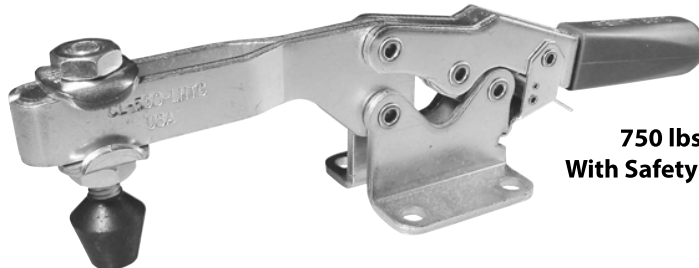
CL-550-HTC-S



CL-551-HTC  
Straight Base

# HORIZONTAL-HANDLE TOGGLE CLAMPS

INFO+: SEE PAGE 415 FOR MATERIAL SPECIFICATIONS



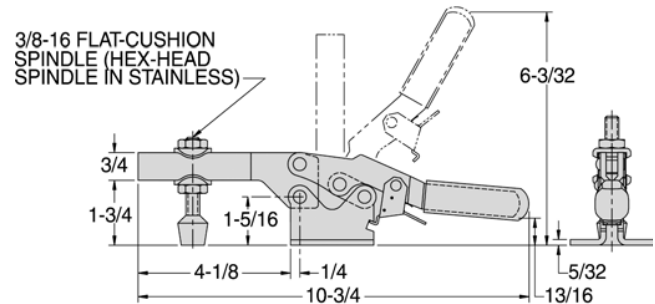
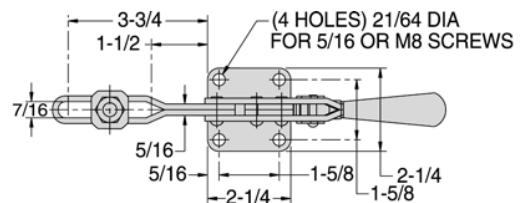
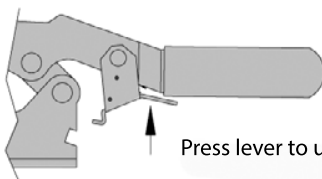
750 lbs  
With Safety Lock

## CL-550-LHTC Open Arm, Flanged Base

Same as the toggle clamp shown above, except with our unique safety-lock feature. This safety lock automatically engages when the clamp is closed, then remains locked until manually disengaged by pressing the lever before opening. This prevents the clamp from being accidentally opened by bumping the handle. Shipping weight 1.6 lbs.

Holding capacity:

750 lbs



# HORIZONTAL-HANDLE TOGGLE CLAMPS

INFO+: SEE PAGE 415 FOR MATERIAL SPECIFICATIONS

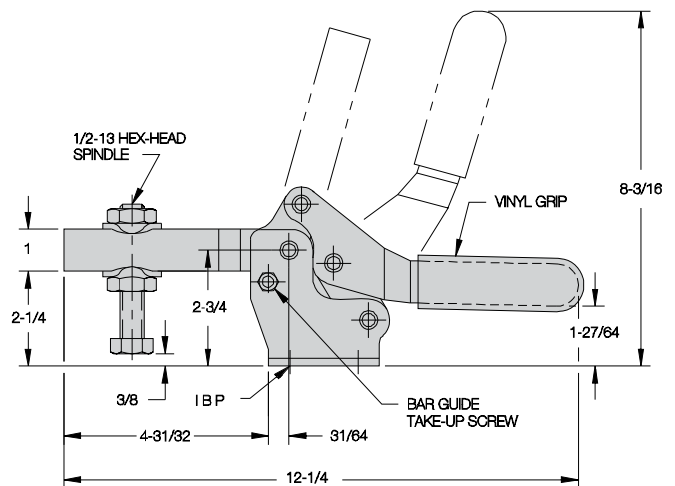
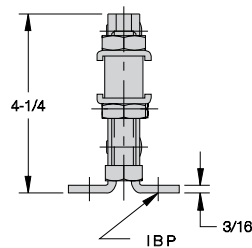
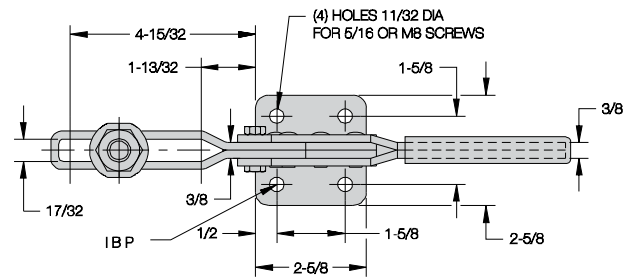


**1000 lbs  
Open Arm**

## CL-650-HTC Open Arm, Flanged Base

Largest and strongest horizontal-handle hold-down clamp with an open arm for spindle adjustment. Arm opens a wide 105° while handle moves 75°. Supplied with 1/2-13 hex-head spindle CL-12314-SA and (2) CL-1213-TW flanged washers. Shipping weight 3.3 lbs.

**Holding capacity: 1000 lbs**

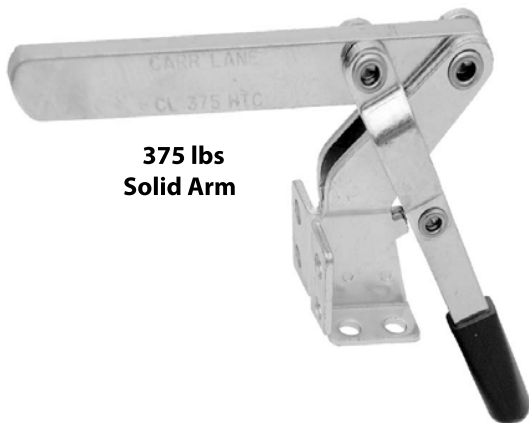


# HORIZONTAL-HANDLE TOGGLE CLAMPS

INFO+: SEE PAGE 415 FOR MATERIAL SPECIFICATIONS



**375 lbs  
Open Arm**



**375 lbs  
Solid Arm**

## CL-375-HTC

**Solid Arm**

## CL-475-HTC

**Open Arm**

Extra-wide-opening clamp with handle that locks at a downward angle. Unique up-then-down handle motion opens arm a full 185°. Dual flanged bases allow mounting on either horizontal or vertical surfaces. Available with a solid arm, or an open arm for spindle adjustment. Accepts all 5/16-18 spindles. INFO+: See pages 522-526 to order. Solid-arm version supplied with a CL-518000-BR bolt retainer. Open-arm version supplied with (2) CL-51610-TW flanged washers. Shipping weight 0.8 lbs.

**Holding capacity:**

**375 lbs**

