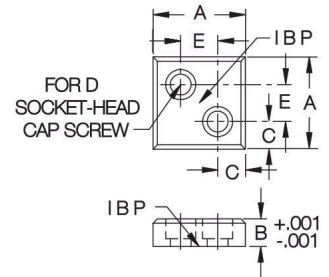
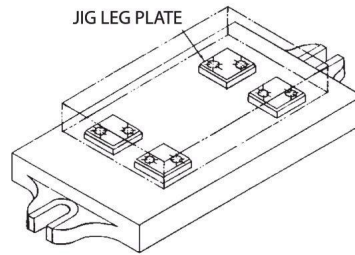
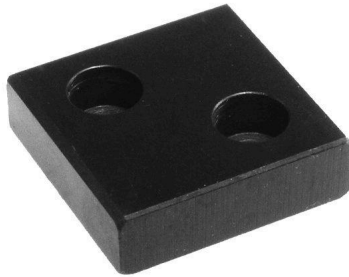


JIG LEG PLATES

1020 STEEL, CASE HARDENED, BLACK OXIDE FINISH



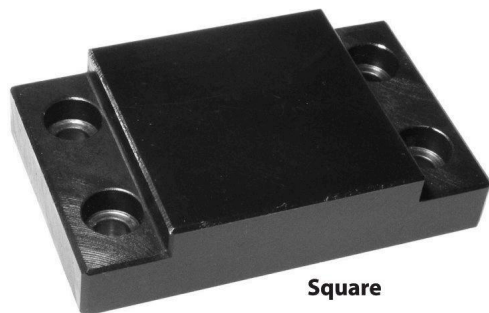
Precision ground pad with a large contact area. Can be used either as a jig foot, or as a rest pad for heavy workpieces. Choice of three sizes.

INCH

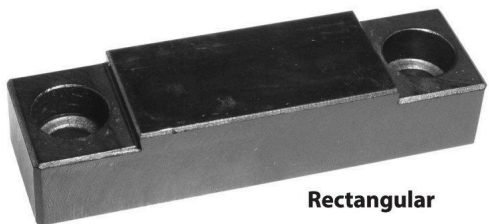
| PART NO. | A | B | C | D | E |
|----------|-------|-------|------|--------------|-----|
| CL-1-JLP | 1 | .3125 | 5/16 | #10-32 OR M5 | 3/8 |
| CL-2-JLP | 1-1/4 | .3750 | 3/8 | 1/4-20 OR M6 | 1/2 |
| CL-3-JLP | 1-1/2 | .4375 | 7/16 | | 5/8 |

HEAVY-DUTY REST PADS

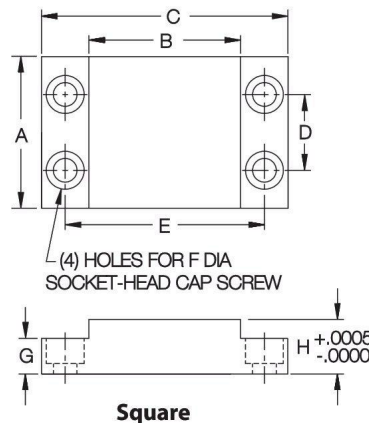
1018 STEEL, CASE HARDENED, BLACK OXIDE FINISH



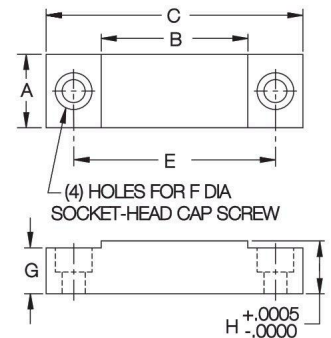
Square



Rectangular



Square



Rectangular

Large, precision rest pad for heavy-duty applications. These hardened pads have a large, durable contact surface to support heavy workpieces, or to serve as wear plates. Choice of four sizes.

SQUARE (INCH)

| PART NO. | A | B | C | D | E | F | G | H |
|-----------|---|---|-------|---|-------|--------------|-----|-------|
| CL-1-HDRP | 2 | 2 | 3-1/4 | 1 | 2-1/2 | 1/4-20 OR M6 | 1/2 | .7500 |

RECTANGULAR (INCH)

| PART NO. | A | B | C | D | E | F | G | H |
|-----------|---|---|-------|---|-------|---------------|-----|-------|
| CL-2-HDRP | 1 | 2 | 3-1/2 | — | 2-3/4 | 5/16-18 OR M8 | 5/8 | .7500 |
| CL-3-HDRP | | 3 | 4-1/2 | — | 3-3/4 | | | |
| CL-4-HDRP | | 4 | 5-1/2 | — | 4-3/4 | | | |