

HOIST RINGS

TYPES



SWIVEL HOIST RINGS

The original, patented safety-engineered Hoist Ring, and the only one that has a production sample destructively pull tested to guarantee each production run meets or exceeds the 5:1 safety factor. Pivots 180 degrees and swivels 360 degrees simultaneously to allow lifting from any direction. Black oxide finish is standard, with cadmium plating available as a special. Also available in 300-series stainless steel, with a load rating equal to 50% of the steel version. Heavy duty versions are available in capacities up to 250,000 lbs. Some varieties available electroless nickel plated, for a less-hazardous corrosion-resistant finish. Made in USA. **INFO+:** Pages 74-82.



FORGED SWIVEL HOIST RINGS

Carr Lane's Forged Swivel Hoist Rings feature a forged lifting ring and simpler construction for easy disassembly. Swivel Hoist Rings pivot 180° and swivel 360° simultaneously to allow lifting from any direction. Available with inch or metric threads in load capacities up to 10,000 lbs, many with a choice of bolt length. Complies with ASME B30.26. **INFO+:** Pages 79-80.



HEAVY DUTY® SWIVEL HOIST RINGS

Heavy-Duty® Swivel Hoist Rings feature a forged lifting ring and simpler construction for easy disassembly. Swivel Hoist Rings pivot 180° and swivel 360° simultaneously to allow lifting from any direction. Available with inch or metric threads in load capacities up to 30,000 lbs, many with a choice of bolt length. Sizes up to 10,000 lbs capacity are optionally available with a long ring, which provides extra reach and allows using larger lifting hooks. Complies with ASME B30.26, CEN/TC 168 Reference EN 1677-1: 2000 Part 1 and 2006/42/EC. **INFO+:** Pages 80



SIDE-PULL HOIST RINGS

Required for side mounting. Flip and turn loads without unhooking (use with a spreader bar). Forged alloy-steel ring pivots 180 degrees and swivels 360 degrees simultaneously to allow lifting from any direction. Large, weldless forged ring can accommodate larger lifting hooks. Meets OSHA standards and military specifications MIL-STD-209J and MIL-STD-1365(11). Safety factor = 5:1. Made in USA. **INFO+:** Pages 83-84.



PIVOTING HOIST RINGS

An economical lifting device ideal for permanent installation. Also has a low profile and high load capacity. Forged base and solid-loop forged ring. Pivots a full 180 degrees, but does not rotate. Safety factor = 5:1. Made in USA. **INFO+:** Page 85.



LIFTING EYES

Forged steel eyebolts with an integral shoulder for greater strength. These simple, economical products are suitable for vertical lifting in-line with the threaded bolt, such as when lifting from a single point or from two points with a spreader bar. For lifting at an angle, Swivel Hoist Rings should be used instead. Manufactured and tested according to ASTM A489 and ANSI B18.15 specifications. Safety factor = 5:1. Made in USA. **INFO+:** Page 86.



HOIST EYE 360®

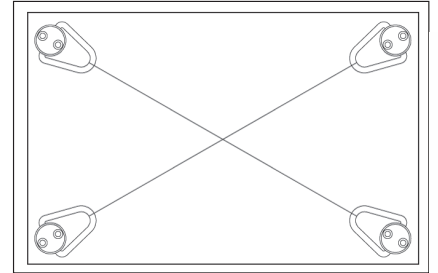
Hoist Eye 360® is a forged lifting eye that can be rotated 360° after installation, to align with the pulling direction. This compact assembly features a specially designed shoulder bolt, which rotates freely in the precisely machined lifting-eye body and is held captive by a retaining ring. Unlike conventional lifting eyes, Hoist Eye 360® can be used at full rated load capacity when pulling at any angle 0 to 90° from the bolt axis. Safety factor = 5:1. Made in USA. **INFO+:** Page 87.

PIVOTING HOIST RINGS

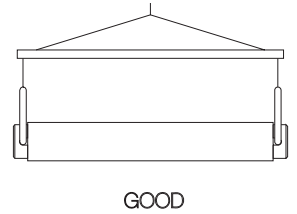
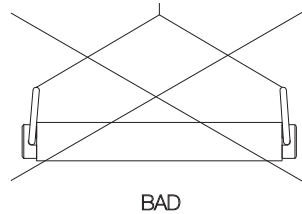
RING: FORGED 4130 STEEL, HEAT TREATED, BLACK OXIDE FINISH, 100% MAGNAFLUX INSPECTED PER ASTM E-1444
BASE: FORGED 1045 STEEL, BLACK OXIDE FINISH



Economical hoist ring with a low profile and high load capacity. Forged base and solid-loop forged ring. Pivots a full 180 degrees, but does not rotate (install so that lifting force is applied in the pivoting direction). Safety factor = 5:1. Fasten hoist ring with grade-8 Socket-Head Cap Screws, using the installation torque specified in the dimension table. The smallest three sizes have two mounting holes, the largest two sizes have four. **INFO+**: See general Hoist Ring Safety Precautions on page 71.

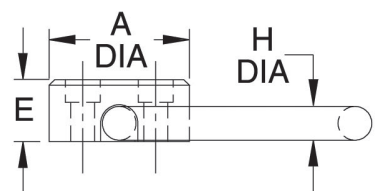
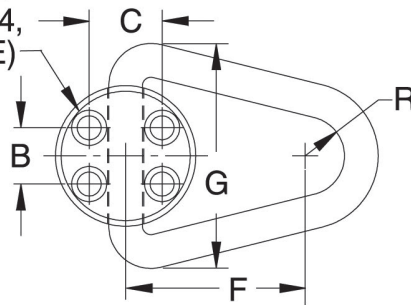


Install hoist rings so that lifting force is applied in the pivoting direction.



Do not allow hoist rings to bind. Use a spreader bar, if necessary, to avoid binding.

FOR D SOCKET-HEAD
CAP SCREWS (2 OR 4,
DEPENDING ON SIZE)



PART NO.	LOAD RATING (LBS)	A DIA	B	C	D THREAD X MIN. LENGTH	E DIA	F	G	H DIA	R	INSTALLATION TORQUE (FT-LBS)	SCREW EXTENSION BELOW BASE
CL-20-HR	2000	1-3/4	1-1/4	1	5/16-18x1.00 (or M8x25mm)	3/4	2	2-1/2	5/16	1/2	4-7	.58 (or 14mm)
CL-25-HR	2500	2-1/4		1-1/8	3/8-16x1.25 (or M10x30mm)	7/8	2-1/2	3-3/16	3/8	5/8	7-10	.79 (or 18mm)
CL-50-HR	5000	2-5/8		1-1/2	1/2-13x1.50 (or M12x40mm)	1-1/8	3	3-7/8	1/2	3/4	20-25	.90 (or 25mm)
CL-120-HR	12000	3-1/8		1-5/8	1/2-13x1.75 (or M12x45mm)	1-3/8	4	5	3/4	7/8	20-25	.90 (or 23mm)
CL-200-HR	20000	3-5/8		2-1/16	5/8-11x2.50 (or M16x65mm)	1-7/8	5	6-3/16	1	1	42-50	1.25 (or 33mm)