

SELF-RETAINING BALL PLUNGERS

BODY: BLACK THERMOPLASTIC (POM)
BALL: STAINLESS STEEL, HARDENED
SPRING: STAINLESS STEEL



1/2 Dia



3/8 Dia

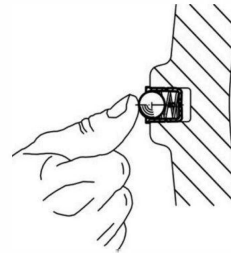


1/4 Dia

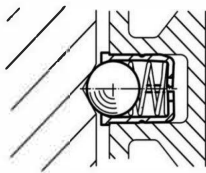


3/16 Dia

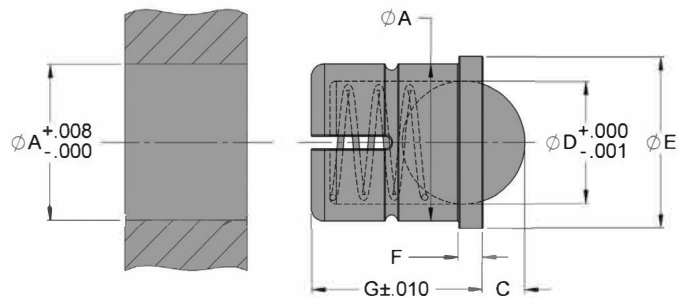
Due to their self-retaining design, these press-fit ball plungers can be securely installed in an ordinary drilled hole. The slotted end of the thermoplastic body expands to compensate for hole tolerances up to .008" oversize. Sturdy shoulder provides a fixed seating position and positively resists detent force. Installation hole can be counterbored to recess the shoulder.



Self-Retaining Ball Plungers can often be installed by hand, due to the body's flexible design.



These plungers can be installed in a plain hole, with the shoulder exposed, or slightly counterbored for flush installation.



INCH

PART NO.	A DIA	END FORCE (LBS)		C	D DIA	E DIA	F	G
		INITIAL	FINAL					
CL-3-SRBP-1	.188	1.3	2.1	.039	.157	.220	.039	.236
CL-4-SRBP-1	.250	1.4	2.8	.059	.197	.276	.039	.276
CL-6-SRBP-1	.375	2.7	5.0	.091	.315	.433	.059	.531
CL-8-SRBP-1	.500	3.1	5.6	.126	.394	.551	.059	.630