

# HOIST RINGS

## TYPES



### SWIVEL HOIST RINGS

The original, patented safety-engineered Hoist Ring, and the only one that has a production sample destructively pull tested to guarantee each production run meets or exceeds the 5:1 safety factor. Pivots 180 degrees and swivels 360 degrees simultaneously to allow lifting from any direction. Black oxide finish is standard, with cadmium plating available as a special. Also available in 300-series stainless steel, with a load rating equal to 50% of the steel version. Heavy duty versions are available in capacities up to 250,000 lbs. Some varieties available electroless nickel plated, for a less-hazardous corrosion-resistant finish. Made in USA. **INFO+:** Pages 74-82.



### FORGED SWIVEL HOIST RINGS

Carr Lane's Forged Swivel Hoist Rings feature a forged lifting ring and simpler construction for easy disassembly. Swivel Hoist Rings pivot 180° and swivel 360° simultaneously to allow lifting from any direction. Available with inch or metric threads in load capacities up to 10,000 lbs, many with a choice of bolt length. Complies with ASME B30.26. **INFO+:** Pages 79-80.



### HEAVY DUTY® SWIVEL HOIST RINGS

Heavy-Duty® Swivel Hoist Rings feature a forged lifting ring and simpler construction for easy disassembly. Swivel Hoist Rings pivot 180° and swivel 360° simultaneously to allow lifting from any direction. Available with inch or metric threads in load capacities up to 30,000 lbs, many with a choice of bolt length. Sizes up to 10,000 lbs capacity are optionally available with a long ring, which provides extra reach and allows using larger lifting hooks. Complies with ASME B30.26, CEN/TC 168 Reference EN 1677-1: 2000 Part 1 and 2006/42/EC. **INFO+:** Pages 80



### SIDE-PULL HOIST RINGS

Required for side mounting. Flip and turn loads without unhooking (use with a spreader bar). Forged alloy-steel ring pivots 180 degrees and swivels 360 degrees simultaneously to allow lifting from any direction. Large, weldless forged ring can accommodate larger lifting hooks. Meets OSHA standards and military specifications MIL-STD-209J and MIL-STD-1365(11). Safety factor = 5:1. Made in USA. **INFO+:** Pages 83-84.



### PIVOTING HOIST RINGS

An economical lifting device ideal for permanent installation. Also has a low profile and high load capacity. Forged base and solid-loop forged ring. Pivots a full 180 degrees, but does not rotate. Safety factor = 5:1. Made in USA. **INFO+:** Page 85.



### LIFTING EYES

Forged steel eyebolts with an integral shoulder for greater strength. These simple, economical products are suitable for vertical lifting in-line with the threaded bolt, such as when lifting from a single point or from two points with a spreader bar. For lifting at an angle, Swivel Hoist Rings should be used instead. Manufactured and tested according to ASTM A489 and ANSI B18.15 specifications. Safety factor = 5:1. Made in USA. **INFO+:** Page 86.



### HOIST EYE 360®

Hoist Eye 360® is a forged lifting eye that can be rotated 360° after installation, to align with the pulling direction. This compact assembly features a specially designed shoulder bolt, which rotates freely in the precisely machined lifting-eye body and is held captive by a retaining ring. Unlike conventional lifting eyes, Hoist Eye 360® can be used at full rated load capacity when pulling at any angle 0 to 90° from the bolt axis. Safety factor = 5:1. Made in USA. **INFO+:** Page 87.

# HOIST RINGS



## **FORGED ROAD-PLATE SWIVEL HOIST RINGS\***

These hoist rings have a shorter, larger-diameter bolt, ideal for lifting heavy plates. **Patent no. 4,570,987, no. 4,641,986, no. 5,405,210** and others pending.



## **FORGED WELD-MOUNT SWIVEL HOIST RINGS\***

These hoist rings mounted by welding. **Patent no. 4,570,987, no. 4,641,986, no. 5,405,210** and others pending.



## **HEAVY-DUTY SUPER-COIL™ SWIVEL HOIST RINGS\***

These hoist rings are furnished with a coil bolt, and are ideal for temporary attachment to steel structures and construction material. **Patent no. 4,570,987, 4,641,986, 5,405,210, 5,732,991**, and others pending.



## **FORGED SWIVEL LIFT PLATES**

These swivel hoist rings have a center through-hole instead of a bolt, for mounting with a custom anchoring system. **Patent no. 4,570,987, no. 4,641,986, no. 5,405,210** and others pending.



## **SHACKLE HOIST RINGS\***

These swivel hoist rings are designed for permanent mounting on tooling and equipment. Forged alloy-steel shackle pivots 180 degrees and swivels 360 degrees simultaneously to allow lifting from any direction. **Patent no. 5,823,588**.



## **FAST-LOK™ PLATE LIFTING SYSTEM**

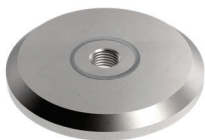
Plate-lifting system with a weld-on base and totally removable shackle assembly, allowing the plate surface to remain totally free of obstructions. Patent pending. **FEATURES:** Fast-Lok™ Clevis, Fast-Lok™ Base, Forged Anchor Shackle, Fast-Lok™ Detent Pin.



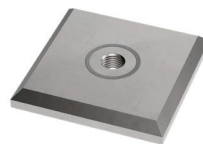
## **SCISSOR-LOK™ PLATE LIFTING SYSTEM**

Plate-lifting system with a weld-on base and totally removable shackle assembly, allowing the plate surface to remain total free of obstructions. Patent pending, **FEATURES:** Scissor-Lok™ Tool, Fast-Lok™ Base, Forged Anchor Shackle, and Fast-Lok™ Detent Pin.

## **HOIST RING ACCESSORIES — AVAILABLE EXCLUSIVELY ONLINE:**



## **RENEWAL ROAD PLATES ROUND**



## **RENEWAL ROAD PLATES SQUARE**

\*Forged alloy-steel shackle pivots 180 degrees and swivels 360 degrees simultaneously to allow lifting from any direction.

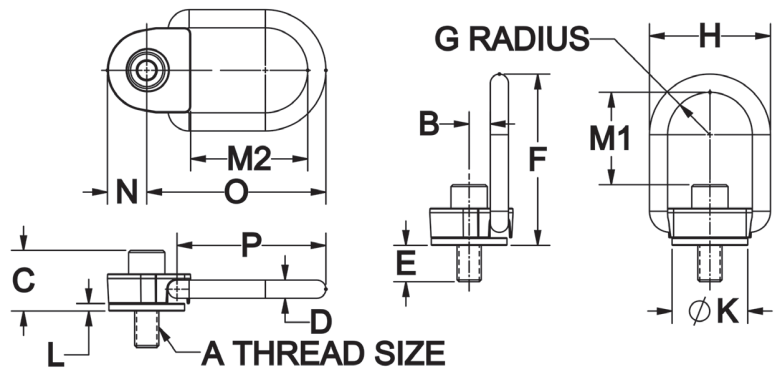
# HEAVY-DUTY® SIDE-PULL HOIST RINGS

ALLOY STEEL, BLACK OXIDE FINISH, 100% MAGNAFLUX INSPECTED



**D-Ring Type**

Heavy-Duty version of our Side-Pull Hoist Rings offers greater load capacity in a given mounting-thread size. D-Ring type shown here is ideal for working with web slings. Side-Pull Hoist Rings are ideal for side mounting. Flip and turn loads without unhooking (use with a spreader bar). Forged alloy-steel ring pivots and swivels 360 degrees simultaneously to allow lifting from any direction. Safety factor = 5:1. **Patent no. 6,267,422.** Fasten hoist ring using the installation torque specified in the dimension table. Always install so that the hoist ring can pivot and swivel freely. **INFO+:** See general Hoist Ring Safety Precautions on page 71.



## D-RING TYPE (INCH)

PART NO.	LOAD RATING (LBS)	A	B	C	D	E	F	G	H	K DIA	L	M1	M2	N	O	P	INSTALLTION TORQUE (FT-LBS)
CL-37305-SPHR	800	5/16-18	.88	1.33	.50	.48	5.12	1.44	3.88	2.19	.23	3.18	3.43	1.25	5.48	4.61	7
CL-37310-SPHR	1000	3/8-16		1.40		3.12						12					
CL-37315-SPHR	2500	1/2-13		1.52		2.99						28					
CL-37320-SPHR	4000	5/8-11		1.65		2.87						60					
CL-37325-SPHR	5000	3/4-10		1.77		2.74						100					
CL-37330-SPHR	7000	3/4-10	1.25	2.22	.75	1.28	6.88	1.75	5.00	3.13	.31	3.76	4.34	1.62	7.40	6.15	100
CL-37335-SPHR	8000	7/8-9		2.35		3.63						160					
CL-37340-SPHR	10000	1"-8		2.47		3.51						230					

## D-RING TYPE (METRIC)

PART NO.	LOAD RATING (kg)	A THREAD	THREAD PITCH (mm)	B (mm)	C (mm)	D (mm)	E (mm)	F (mm)	G (mm)	H (mm)	K DIA (mm)	L (mm)	M1 (mm)	M2 (mm)	N (mm)	O (mm)	P (mm)	INSTALLTION TORQUE (N-m)
CLM-37805-SPHR	400	M8	1.25	22	34	13	14	130	37	99	56	6	81	87	32	139	117	9.5
CLM-37810-SPHR	450	M10	1.5		36		24						79					16
CLM-37815-SPHR	1050	M12	1.75		38		39						77					37
CLM-37820-SPHR	1900	M16	2		42		39						73					80
CLM-37825-SPHR	2200	M20	2.5	32	46	19	39	175	44	127	79	8	69	110	41	188	156	135
CLM-37830-SPHR	3000	M20	2.5		57		38						94					135
CLM-37835-SPHR	4200	M24	3		61		43						90					311

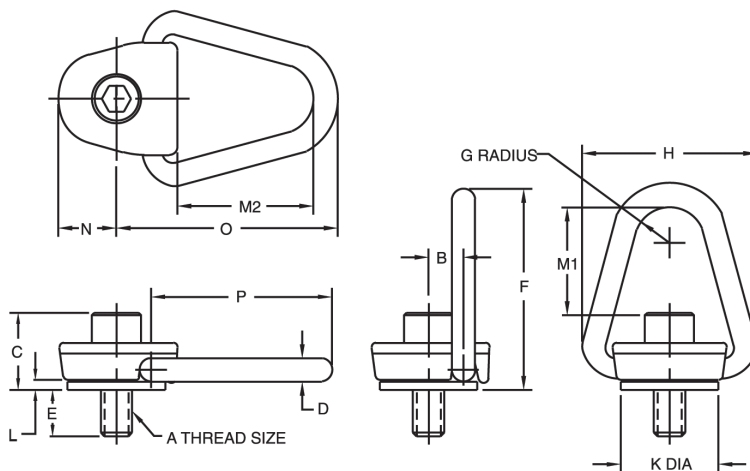
# HEAVY-DUTY® SIDE-PULL HOIST RINGS

ALLOY STEEL, BLACK OXIDE FINISH, 100% MAGNAFLUX INSPECTED



**Triangular-Ring  
Type**

Heavy-Duty version of our Side-Pull Hoist Rings offers greater load capacity in a given mounting-thread size. Side-Pull Hoist Rings are ideal for side mounting. Flip and turn loads without unhooking (use with a spreader bar). Forged alloy-steel ring pivots and swivels 360 degrees simultaneously to allow lifting from any direction. Safety factor = 5:1. **Patent no. 6,267,422.** Fasten hoist ring using the installation torque specified in the dimension table. Always install so that the hoist ring can pivot and swivel freely. **INFO+:** See general Hoist Ring Safety Precautions on page 71.



## TRIANGULAR-RING TYPE (INCH)

PART NO.	LOAD RATING (LBS)	A THREAD	B	C	D	E ±.12	F	G	H	K DIA	L	M1	M2	N	O	P	INSTALLATION TORQUE (FT-LBS)
CL-36305-SPHR	800	5/16-18	.87	1.33	.5	.48	4.76	.75	3.88	2.19	.23	2.94	3.17	1.25	5.12	4.25	7
CL-36310-SPHR	1000	3/8-16		1.4		.48						2.88					12
CL-36315-SPHR	2500	1/2-13		1.52		.98						2.75					28
CL-36320-SPHR	4000	5/8-11		1.65		1.23						2.63					60
CL-36325-SPHR	5000	3/4-10	1.25	1.77	.75	1.28	6.36	.88	5.25	3.13	.31	2.5	3.97	1.63	6.88	5.63	100
CL-36330-SPHR	7000	3/4-10		2.22		1.28						3.38					100
CL-36335-SPHR	8000	7/8-9		2.35		1.28						3.26					160
CL-36340-SPHR	10000	1-8		2.47		1.53						3.13					230

## TRIANGULAR-RING TYPE (METRIC)

PART NO.	LOAD RATING (kg)	A THREAD	THREAD PITCH (mm)	B (mm)	C (mm)	D (mm)	E ±3.0 (mm)	F (mm)	G (mm)	H (mm)	K DIA (mm)	L (mm)	M1 (mm)	M2 (mm)	N (mm)	O (mm)	P (mm)	INSTALLATION TORQUE (N-m)
CLM-36805-SPHR	400	M8	1.25	22	34	13	14	121	19	98	56	6	74	81	32	130	108	9.5
CLM-36810-SPHR	450	M10	1.5		36		24						72					16
CLM-36815-SPHR	1050	M12	1.75		38		39						70					37
CLM-36820-SPHR	1900	M16	2.0		42		39						66					80
CLM-36825-SPHR	2200	M20	2.5	32	46	19	38	161	22	133	79	8	62	101	41	175	143	135
CLM-36830-SPHR	3000	M20	2.5		57		38						85					135
CLM-36835-SPHR	4200	M24	3.0		61		43						81					311