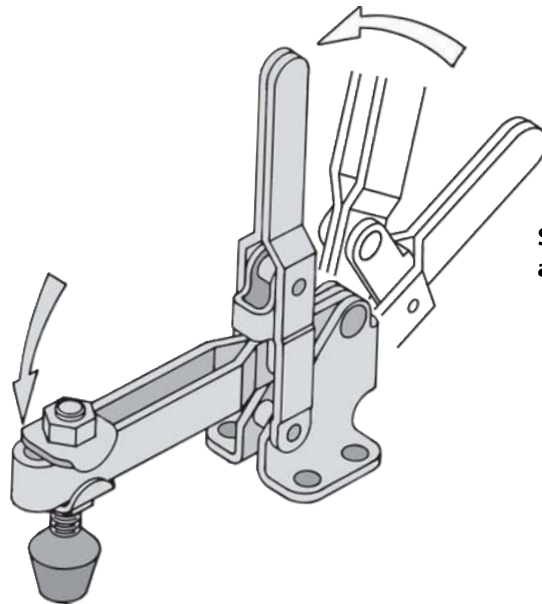
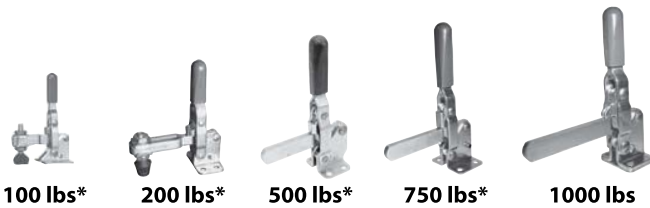


# VERTICAL-HANDLE TOGGLE CLAMPS



Sizes marked \* are also available in stainless steel



## Wide Opening

Clamping arm opens past 90° for excellent loading clearance. Most-popular and widest-range series of vertical-handle hold-down clamps. Choice of flanged or straight base, solid or open arm, and regular or T handle in most of the seven available sizes.

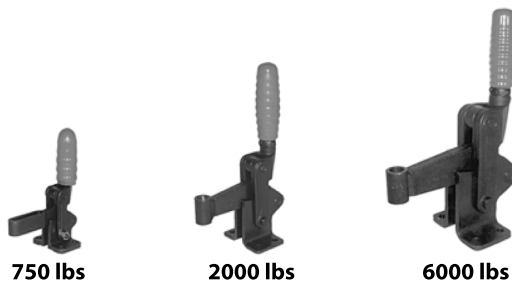


750 lbs

## Wide Opening

### Automatically Adjusting

Self-adjusting clamp automatically compensates for different workpiece heights without resetting the spindle. Clamping force is always consistent. Wide opening.



750 lbs

2000 lbs

6000 lbs

## Wide Opening – Heavy-Duty

Heavy-duty production clamps designed for extreme durability. Available either as complete clamps or as basic mechanisms for adding custom clamping arms or handles. Choice of four sizes.

CONTINUED ON NEXT PAGE

# VERTICAL-HANDLE TOGGLE CLAMPS

CONTINUED FROM PREVIOUS PAGE



150 lbs\*



350 lbs\*



750 lbs\*

## Low Profile

Extremely compact low-profile clamps with a unique finger-grip T handle. Available in three sizes.



100 lbs\*



250 lbs



625 lbs



850 lbs

## Low Arm

Simple, easy-opening clamps with excellent arm reach. Extends farther over workpiece than any clamp its size. Choice of flanged or straight base, and solid or open arm. Arm opens 83°. Available in seven sizes, the largest three forged.



1500 lbs



2500 lbs



5000 lbs



100 lbs\*



250 lb



625 lbs



850 lbs

## High Arm

Simple, easy-opening clamps with extra arm height. Choice of flanged or straight base, and solid or open arm. Arm opens 83°. Available in seven sizes, the largest three forged.



1500 lbs



2500 lbs



5000 lbs



1000 lbs

## Vertical Handle Cam Clamps

Wide-opening clamp that locks by spiral-cam action rather than toggle action. Solid arm, flanged base.

# VERTICAL-HANDLE TOGGLE CLAMPS

INFO+: SEE PAGE 415 FOR MATERIAL SPECIFICATIONS

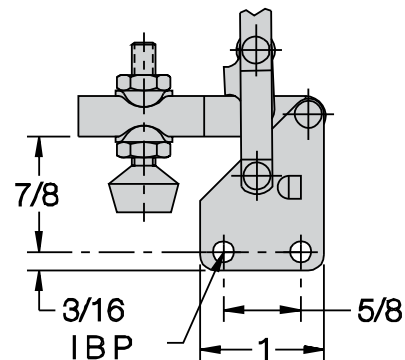
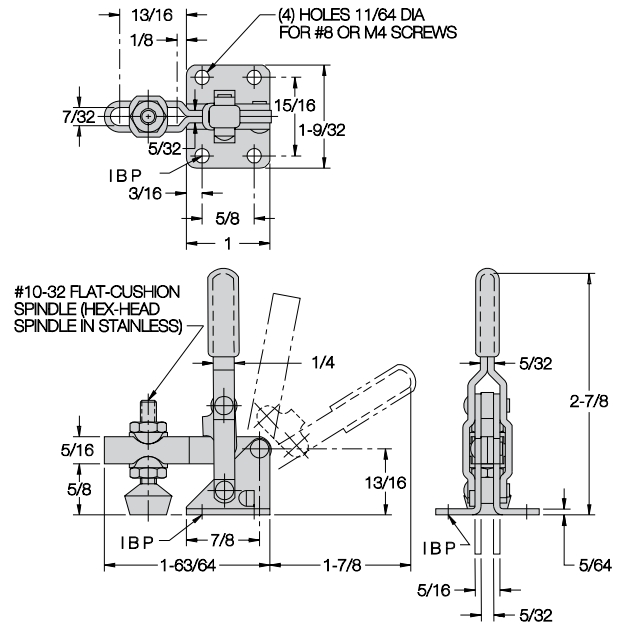


## CL-150-VTC Open Arm, Flanged Base

Smallest wide-opening hold-down clamp available. Open arm provides adjustable spindle location. Arm opens 100° while handle moves 56°. Supplied with #10-32 flat-cushion spindle CL-316112-FC and (2) CL-3166-TW flanged washers. Shipping weight 0.2 lbs.

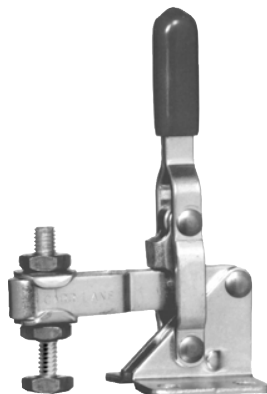
**Holding capacity:**

**100 lbs**



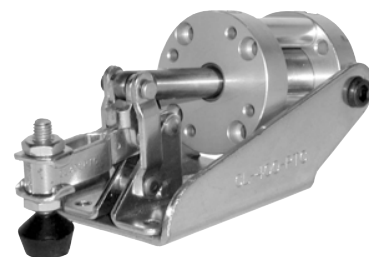
## CL-151-VTC Straight Base

Also available  
in stainless steel...



CL-150-VTC-S

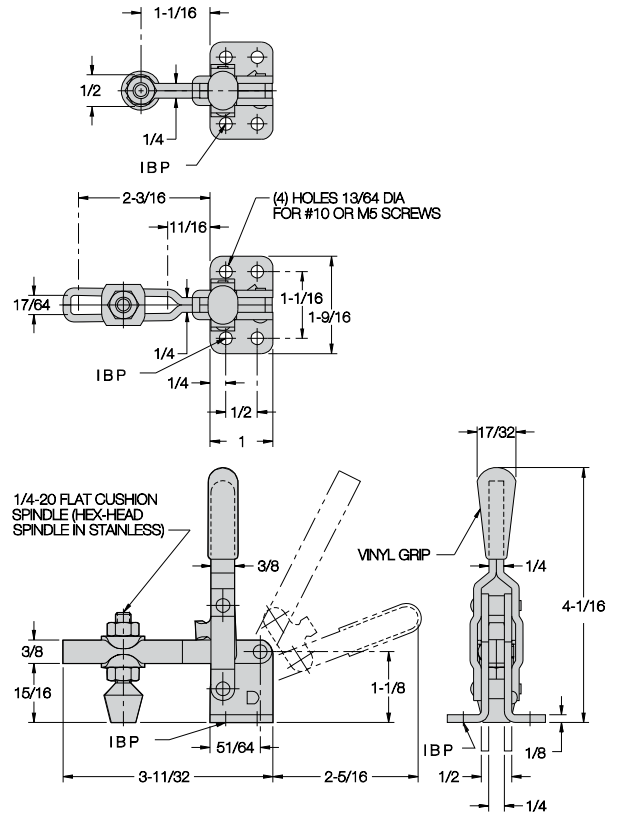
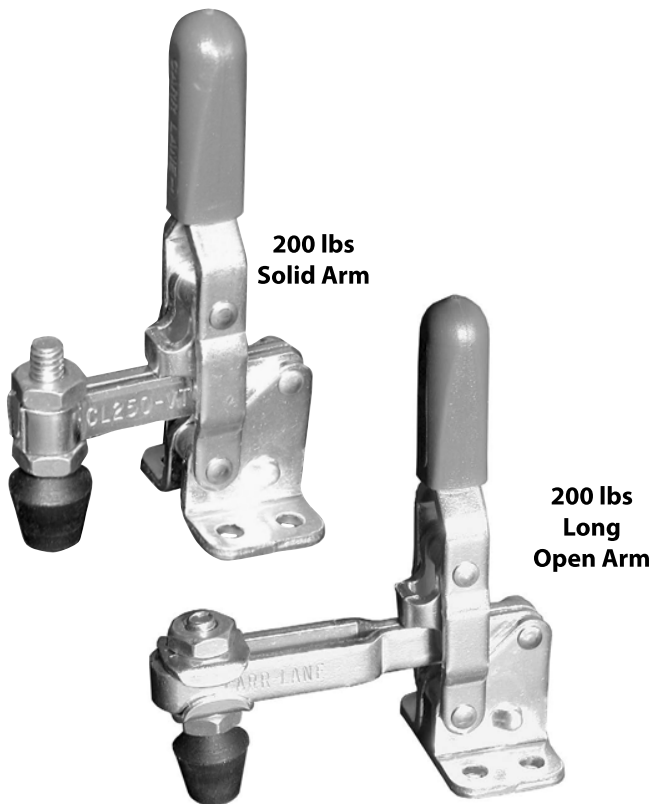
Also available  
air powered...



CL-400-PTC

# VERTICAL-HANDLE TOGGLE CLAMPS

INFO+: SEE PAGE 415 FOR MATERIAL SPECIFICATIONS



## CL-250-VTC CL-253-VTC

**Solid Arm, Flanged Base**

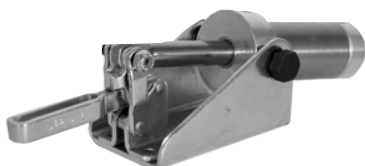
**Open Arm, Flanged Base**

Small-yet-powerful clamp available in several configurations. Choose either a solid arm, or a long open arm for spindle adjustment. Arm opens 117° while handle moves 69°. Supplied with 1/4-20 short flat-cushion spindle CL-14112-FC. Open-arm version supplied with (2) CL-148-TW flanged washers. Shipping weight 0.4 lbs.

**Holding capacity:**

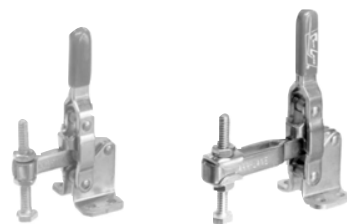
**200 lbs**

**Also available air powered**



**CL-500-PTC**

**Also available in stainless steel...**



**CL-250-VTC-S**

**CL-253-VTC-S**

# VERTICAL-HANDLE TOGGLE CLAMPS

INFO+: SEE PAGE 415 FOR MATERIAL SPECIFICATIONS

**200 lbs  
Solid Arm  
With Safety Lock**



**200 lbs  
Long Open Arm  
With Safety Lock**



**CL-250-LVTC**

**Solid Arm, Flanged Base**

**CL-253-LVTC**

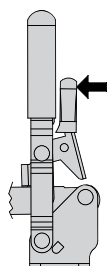
**Long, Open Arm, Flanged Base**

**INFO+:** Same as the wide-opening toggle clamps shown on page 468, except with our unique safety-lock feature. This safety lock automatically engages when the clamp is closed, then remains locked until manually disengaged by pressing the handle. This prevents the clamp from being accidentally opened by bumping the handle.

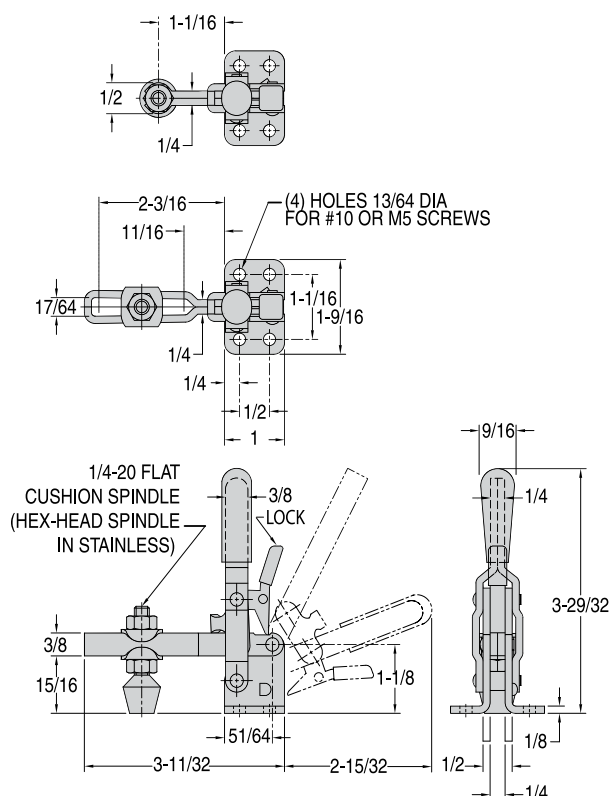
Choose either a solid arm, or a long open arm for spindle adjustment. Arm opens 117° while handle moves 69°. Supplied with 1/4-20 short flat-cushion spindle CL-14112-FC. Open-arm version supplied with (2) CL-148-TW flanged washers. Shipping weight 0.4 lbs.

**Holding capacity:**

**200 lbs**



**Press Lever To Unlock**



# VERTICAL-HANDLE TOGGLE CLAMPS

INFO+: SEE PAGE 415 FOR MATERIAL SPECIFICATIONS



**500 lbs  
Solid Arm**



**500 lbs  
Open Arm**

**CL-350-VTC**

**Solid Arm, Flanged Base**

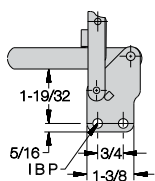
**CL-450-VTC**

**Open Arm, Flanged Base**

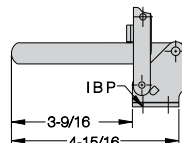
Most-popular wide-opening clamp available in many configurations. Choose either a solid arm, or an open arm for spindle adjustment (extra-long arms also available). Arm opens 100° while handle moves 60°. Accepts any 5/16-18 short spindle. Solid-arm versions supplied with a CL-518000-BR bolt retainer. Open-arm versions supplied with (2) CL-51610-TW flanged washers. Shipping weight 0.8 lbs.

**Holding capacity:**

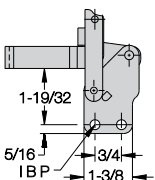
**500 lbs**



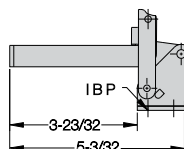
**CL-351-VTC  
Solid Arm  
Straight Base**



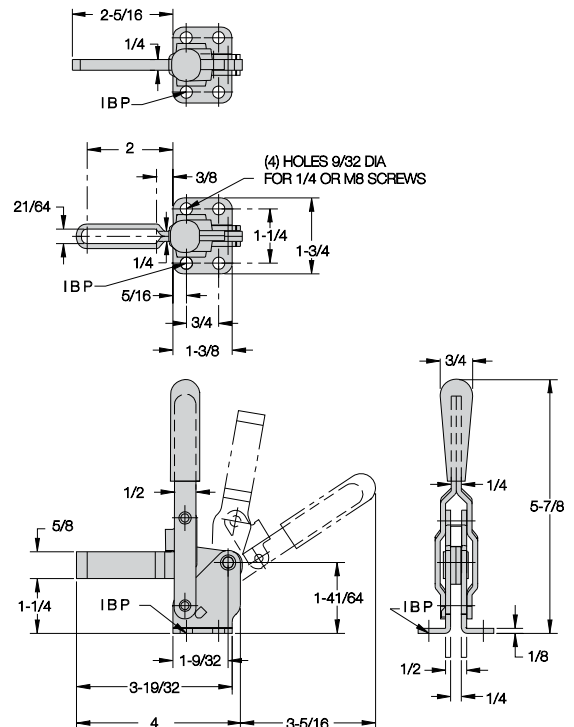
**CL-353-VTC  
Long Solid Arm  
Flanged Base**



**CL-451-VTC  
Open Arm  
Straight Base**



**CL-453-VTC  
Long Open Arm  
Flanged Base**



**Also available  
in stainless steel...**



**CL-450-VTC-S**

**Also available  
air powered...**



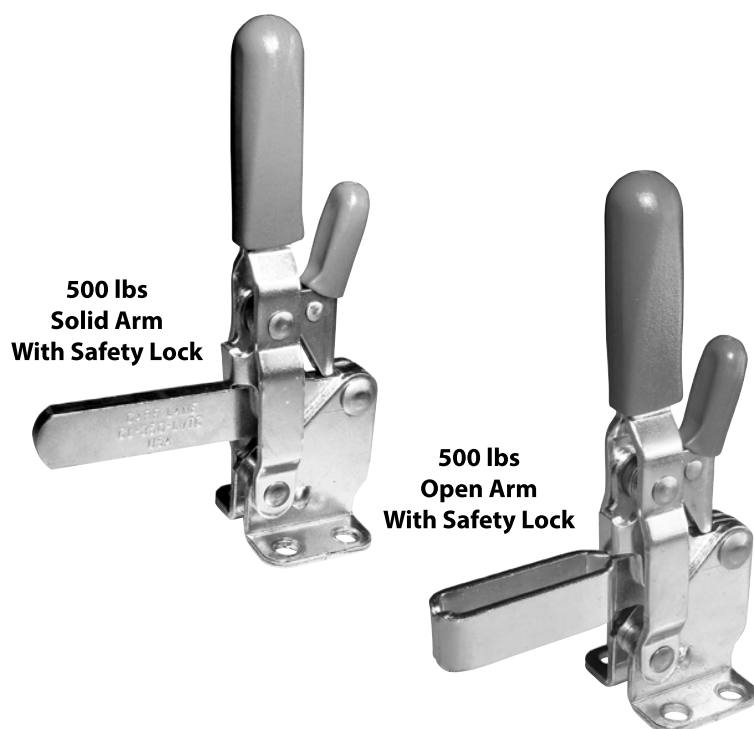
**CL-1001-PTC  
Solid Arm**



**CL-1000-PTC  
Open Arm**

# VERTICAL-HANDLE TOGGLE CLAMPS

INFO+: SEE PAGE 415 FOR MATERIAL SPECIFICATIONS



**CL-350-LVTC**

**Solid Arm, Flanged Base**

**CL-450-LVTC**

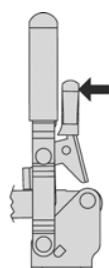
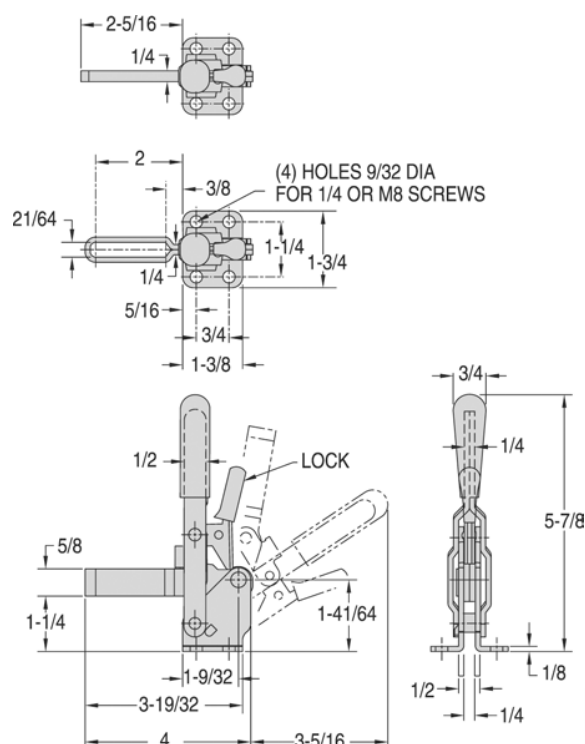
**Open Arm, Flanged Base**

**INFO+:** Same as the wide-opening toggle clamps shown on page 476, except with our unique safety-lock feature. This safety lock automatically engages when the clamp is closed, then remains locked until manually disengaged by pressing the handle. This prevents the clamp from being accidentally opened by bumping the handle.

Choose either a solid arm, or an open arm for spindle adjustment. Arm opens 100° while handle moves 60°. Accepts any 5/16-18 short spindle. Solid-arm version supplied with CL-518000-BR bolt retainer. Open-arm version supplied with (2) CL-51610-TW flanged washers. Shipping weight 0.9 lbs.

**Holding capacity:**

**500 lbs**



**Press Lever To Unlock**

**Also available  
in stainless steel...**



**CL-450-LVTC-S**

# VERTICAL-HANDLE TOGGLE CLAMPS

INFO+: SEE PAGE 415 FOR MATERIAL SPECIFICATIONS



**CL-550-VTC**

**Solid Arm, Flanged Base**

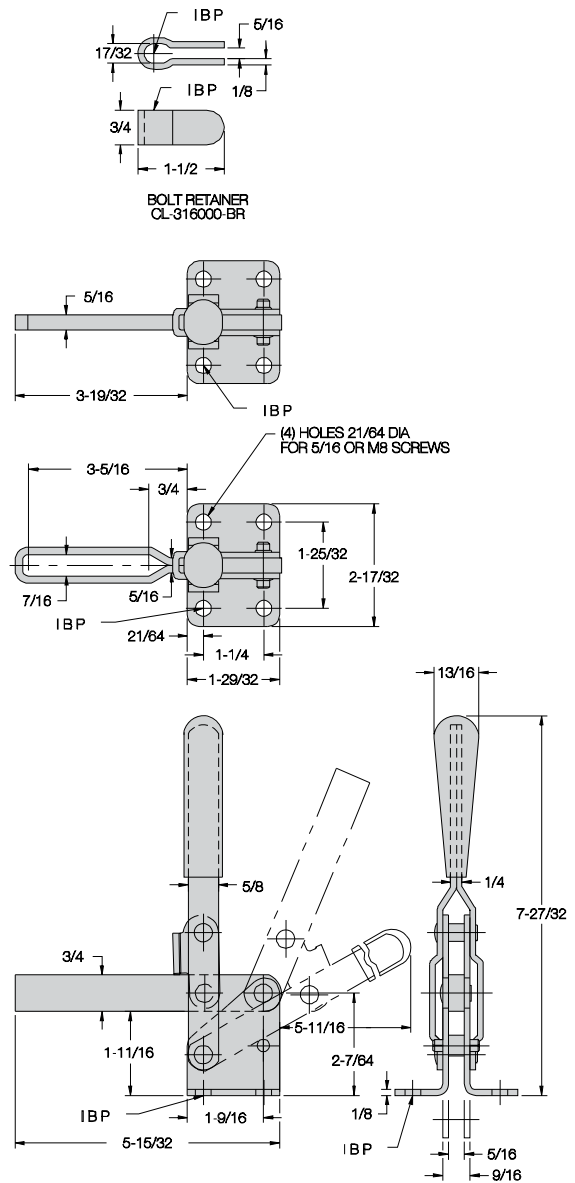
**CL-650-VTC**

**Open Arm, Flanged Base**

Larger wide-opening clamp available in several configurations. Choose either a solid arm, or an open arm for spindle adjustment. Arm opens 106° while handle moves 58°. Accepts any 3/8-16 spindle. Solid-arm version supplied with a CL-316000-BR bolt retainer. Open-arm version supplied with (2) CL-3811-TW flanged washers. Shipping weight 1.3 lbs.

**Holding capacity:**

**750 lbs**



**Also available with  
patented automatic adjustment!**



**CL-650-ATC**

**Also available  
in stainless steel...**



**CL-650-VTC-S**

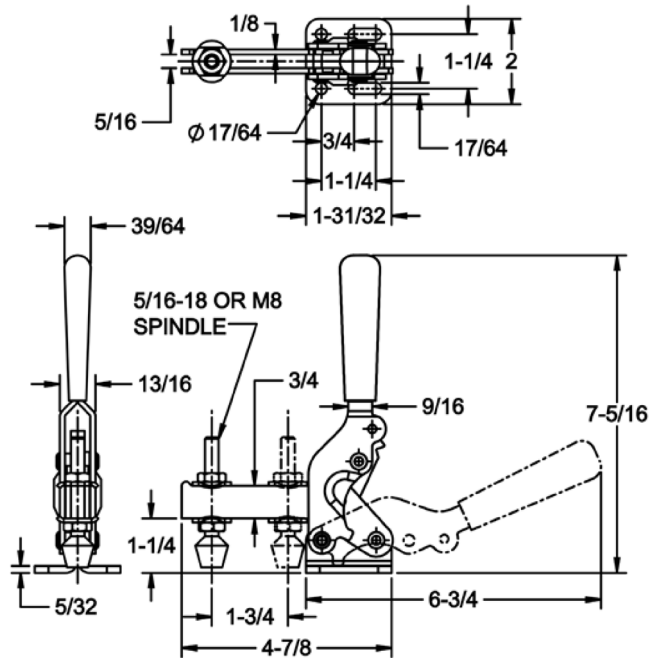
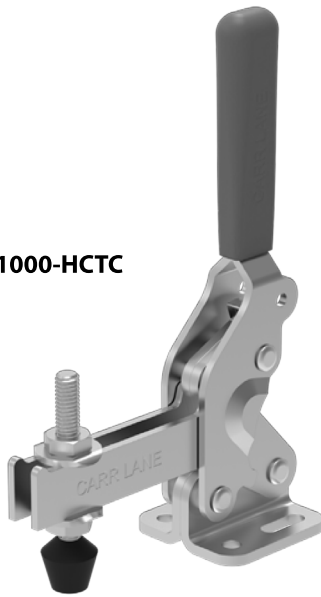


# HIGH CAPACITY TOGGLE CLAMPS

INFO+: SEE PAGE 415 FOR MATERIAL SPECIFICATIONS

Quick acting High-Capacity Toggle Clamp with almost vertical clamping. Featuring improved clearance for safety and hardened bushings at critical pivot points. Spindle configurations are available in both inch and metric. These clamps also have a slotted base allowing both inch and metric hole mounting options.

CL-1000-HCTC



## INCH

Part Number	DESCRIPTION	HOLDING CAPACITY (lbs)	HANDLE COLOR	SHIPPING WEIGHT (lbs)
CL-1000-HCTC	Open Arm, Flange Base	1000	Green	1.25
CL-1000-HCTC-R	Open Arm, Flange Base	1000	Red	1.25
CL-1000-HCTC-S	Open Arm, Flange Base	1000	Green	1.25
CL-600-HCTC	Open Arm, Flange Base	600	Green	.56
CL-600-HCTC-R	Open Arm, Flange Base	600	Red	.56
CL-600-HCTC-S	Open Arm, Flange Base	600	Green	.56

## METRIC

Part Number	DESCRIPTION	HOLDING CAPACITY (lbs)	HANDLE COLOR	SHIPPING WEIGHT (lbs)
CLM-1000-HCTC	Open Arm, Flange Base	4448	Green	0.57
CLM-1000-HCTC-R	Open Arm, Flange Base	4448	Red	0.57
CLM-1000-HCTC-S	Open Arm, Flange Base	4448	Green	0.57
CLM-600-HCTC	Open Arm, Flange Base	2669	Green	.25
CLM-600-HCTC-R	Open Arm, Flange Base	2669	Red	.25
CLM-600-HCTC-S	Open Arm, Flange Base	2669	Green	.25

# VERTICAL-HANDLE TOGGLE CLAMPS

INFO+: SEE PAGE 415 FOR MATERIAL SPECIFICATIONS

**750 lbs  
Open Arm  
With Safety Lock**



## CL-650-LVTC

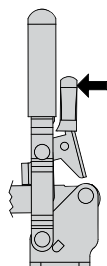
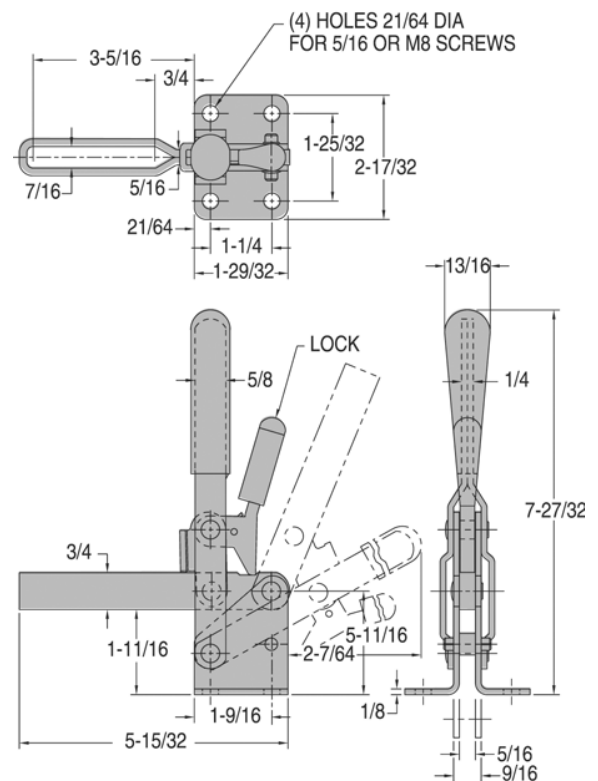
**Open Arm, Flanged Base**

INFO+: Same as the wide-opening toggle clamps shown on page 472, except with our unique safety-lock feature. This safety lock automatically engages when the clamp is closed, then remains locked until manually disengaged by pressing the handle. This prevents the clamp from being accidentally opened by bumping the handle.

Open arm provides spindle adjustment. Arm opens 106° while handle moves 58°. Accepts any 3/8-16 spindle. Supplied with (2) CL-3811-TW flanged washers. Shipping weight 1.4 lbs.

**Holding capacity:**

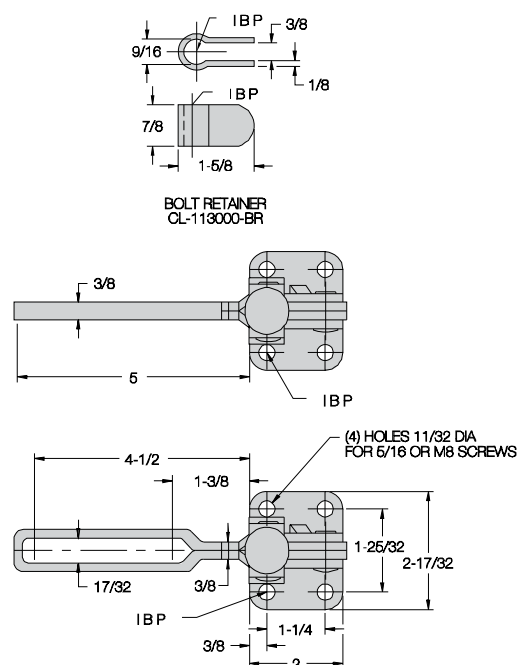
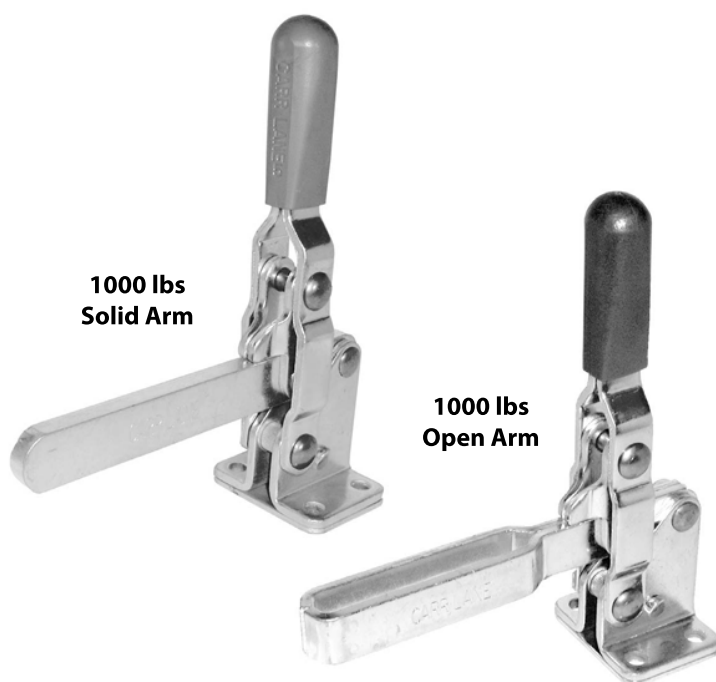
**750 lbs**



**Press Lever To Unlock**

# VERTICAL-HANDLE TOGGLE CLAMPS

INFO+: SEE PAGE 415 FOR MATERIAL SPECIFICATIONS



**CL-750-VTC**

**Solid Arm, Flanged Base**

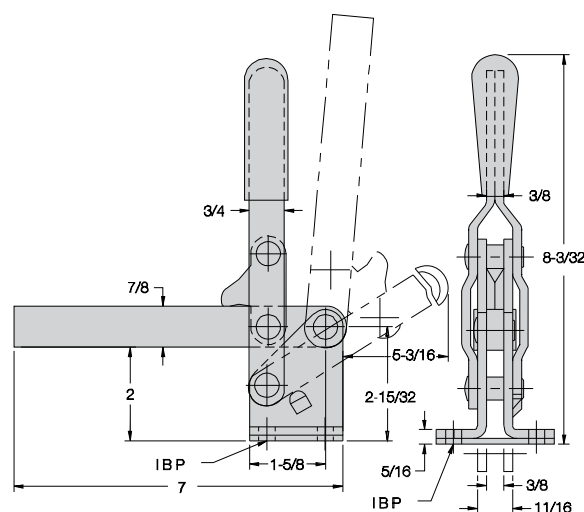
**CL-850-VTC**

**Open Arm, Flanged Base**

Extra-large wide-opening clamp. Choose either a solid arm, or an open arm for spindle adjustment. Arm opens 120° while handle moves 67°. Accepts any 1/2-13 spindle. Solid-arm version supplied with a CL-113000-BR bolt retainer. Open-arm version supplied with (2) CL-1213-TW flanged washers. Shipping weight 2.5 lbs.

**Holding capacity:**

**1000 lbs**



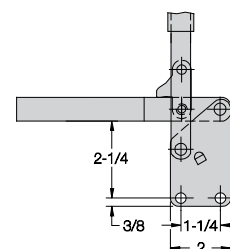
**Also available air powered...**



**CL-2001-PTC**  
Solid Arm



**CL-2000-PTC**  
Open Arm



**CL-851-VTC**  
Open Arm  
Straight Base

# VERTICAL-HANDLE TOGGLE CLAMPS

INFO+: SEE PAGE 415 FOR MATERIAL SPECIFICATIONS



**1000 lbs  
Open Arm  
With Safety Lock**

## CL-850-LVTC

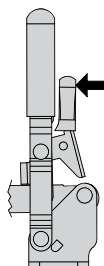
### Open Arm, Flanged Base

**INFO+:** Same as the wide-opening toggle clamps shown on page 480, except with our unique safety-lock feature. This safety lock automatically engages when the clamp is closed, then remains locked until manually disengaged by pressing the handle. This prevents the clamp from being accidentally opened by bumping the handle.

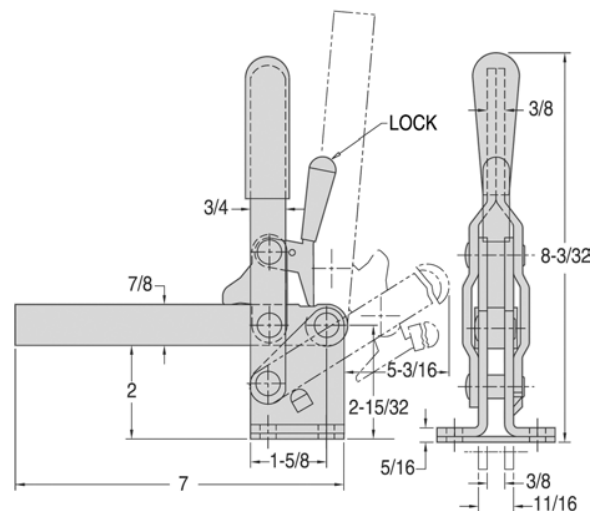
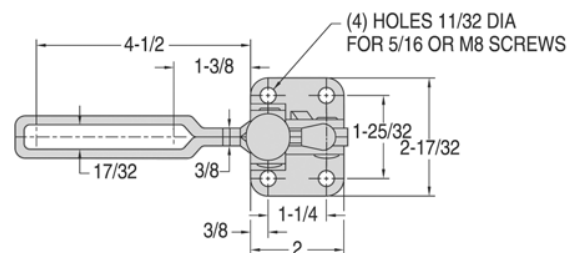
Open arm provides spindle adjustment. Arm opens 120° while handle moves 67°. Accepts any 1/2-13 spindle. Supplied with (2) CL-1213-TW flanged washers. Shipping weight 2.5 lbs.

**Holding capacity:**

**1000 lbs**



**Press Lever To Unlock**



# VERTICAL-HANDLE TOGGLE CLAMPS

INFO+: SEE PAGE 415 FOR MATERIAL SPECIFICATIONS



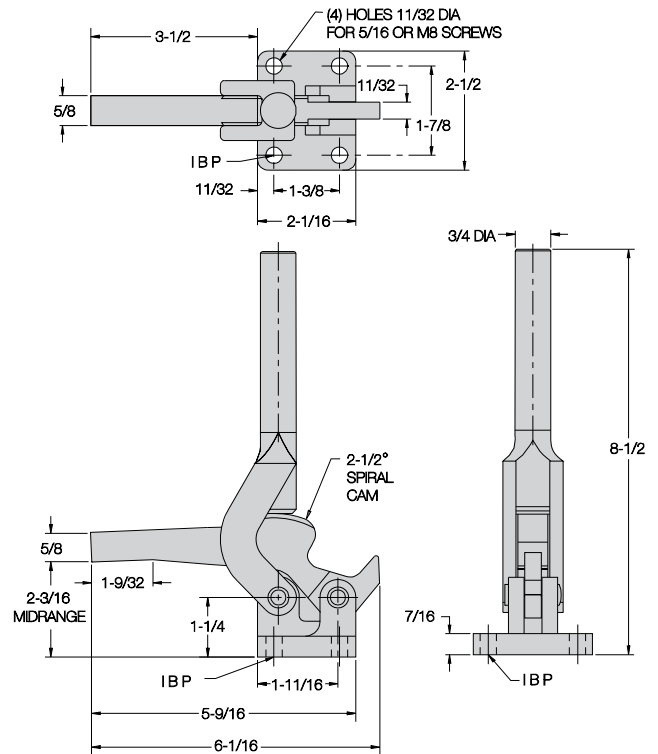
**1000 lbs  
Cam Action**

## CL-1000-VCC

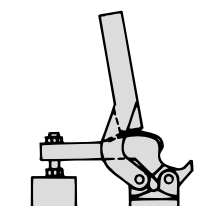
Wide-opening clamp that locks by cam action rather than toggle action. Smooth spiral cam locks securely anywhere within a 3/16-inch clamping range. Rugged cast-steel components are flame hardened at all wear points. Solid arm can be tapped to accept a spindle, or otherwise modified. Shipping weight 2.5 lbs.

**Holding capacity:**

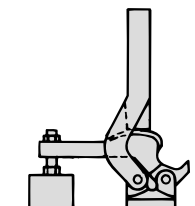
**1000 lbs**



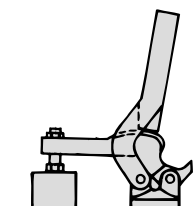
**Optional Vinyl Grip  
CL-3-HVTC-G**



**Low Limit**



**Average Setting**

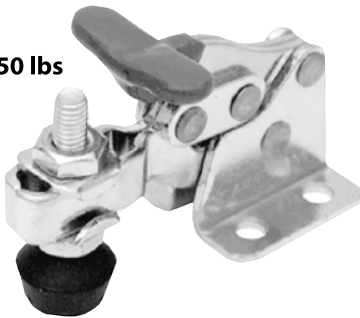


**High Limit**

# VERTICAL-HANDLE TOGGLE CLAMPS

INFO+: SEE PAGE 415 FOR MATERIAL SPECIFICATIONS

750 lbs



150 lbs



350 lbs



Hold-down toggle clamp with a unique finger-grip T handle. Extremely compact design. Open arm provides adjustable spindle location. Arm opens 92° while handle moves 175°.

## CL-200-VTC

Miniature-size T-handle clamp. Supplied with #10-32 flat-cushion spindle CL-316112-FC and (2) CL-3166-TW flanged washers. Shipping weight 0.2 lbs.

**Holding capacity:** 150 lbs

## CL-300-VTC

Medium-size T-handle clamp. Supplied with 5/16-18 flat-cushion spindle CL-518208-FC and (2) CL-51610-TW flanged washers. Shipping weight 0.6 lbs.

**Holding capacity:** 350 lbs

## CL-500-VTC

Large-size T-handle clamp. Supplied with 3/8-16 flat-cushion spindle CL-38212-FC and (2) CL-3811-TW flanged washers. Shipping weight 1.3 lbs.

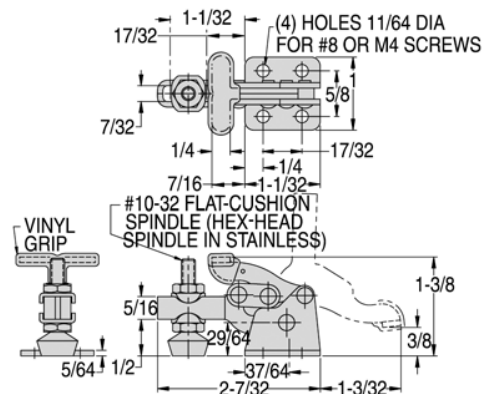
**Holding capacity:** 750 lbs

Also available in stainless steel...

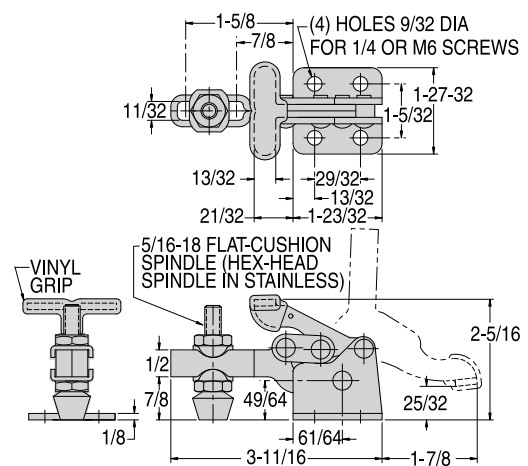
CL-200-VTC-S  
150 lbs



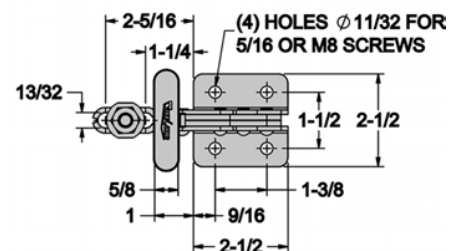
CL-300-VTC-S  
350 lbs



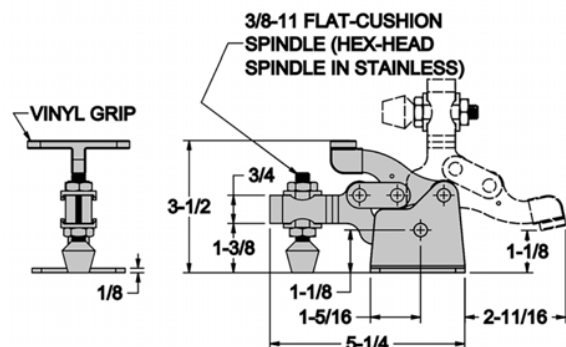
CL-200-VTC



CL-300-VTC



CL-500-VTC



CL-500-VTC

# VERTICAL-HANDLE TOGGLE CLAMPS

INFO+: SEE PAGE 415 FOR MATERIAL SPECIFICATIONS



**INFO+:** Same as our hold-down toggle clamps on page 470, except with our unique safety-lock feature. This safety lock automatically engages when the clamp is closed, then remains locked until manually disengaged by pressing the lever before opening. This prevents the clamp from being accidentally opened by bumping the handle. This clamp has a unique finger-grip T handle. Extremely compact design. Open arm provides adjustable spindle location. Arm opens 92° while handle moves 175°.

## CL-200-LVTC

Miniature-size T-handle clamp. Supplied with #10-32 flat-cushion spindle CL-316112-FC and (2) CL-3166-TW flanged washers. Shipping weight 0.2 lbs.

**Holding capacity:** 150 lbs

## CL-300-LVTC

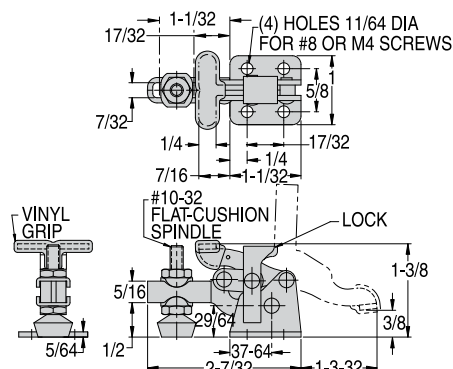
Medium-size T-handle clamp. Supplied with 5/16-18 flat-cushion spindle CL-518208-FC and (2) CL-51610-TW flanged washers. Shipping weight 0.6 lbs.

**Holding capacity:** 350 lbs

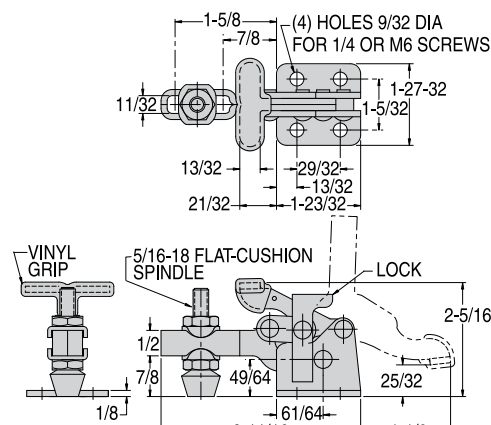
## CL-500-LVTC

Large-size T-handle clamp. Supplied with 3/8-16 flat-cushion spindle CL-38212-FC and (2) CL-3811-TW flanged washers. Shipping weight 1.3 lbs.

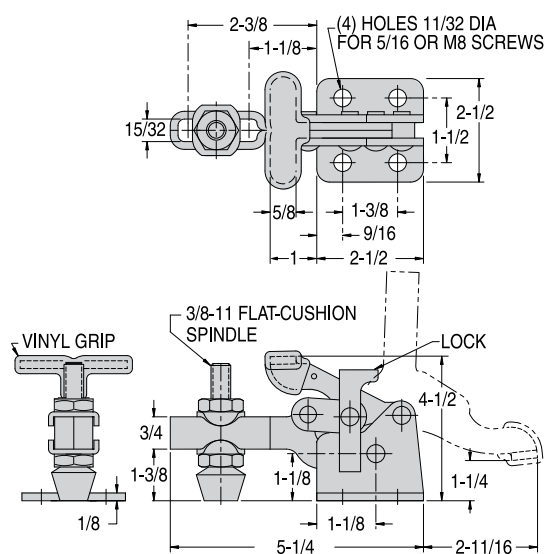
**Holding capacity:** 750 lbs



CL-200-LVTC



CL-300-LVTC

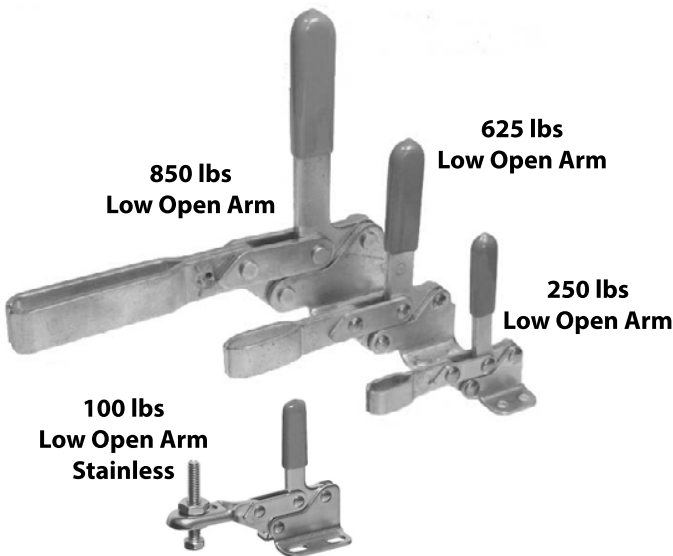


CL-500-LVTC



# VERTICAL-HANDLE TOGGLE CLAMPS

INFO+: SEE PAGE 415 FOR MATERIAL SPECIFICATIONS



Simple, easy-opening clamps with excellent arm reach, extending farther over workpiece than any other clamps their size. Open arm allows spindle adjustment. Arm opens 83° while handle moves 83°. Available in four sizes.

## CL-11-TC Low Open Arm, Flanged Base

Miniature clamp in stainless steel. Supplied with #8-32 hex-head spindle CL-832203-SA-S. Shipping weight 0.1 lbs.

**Holding capacity:** 100 lbs

## CL-111-TC Low Open Arm, Flanged Base

Small-size clamp. Accepts any 1/4-20 spindle and (2) CL-147-TW flanged washers. Shipping weight 0.3 lbs.

**Holding capacity:** 250 lbs

## CL-211-TC Low Open Arm, Flanged Base

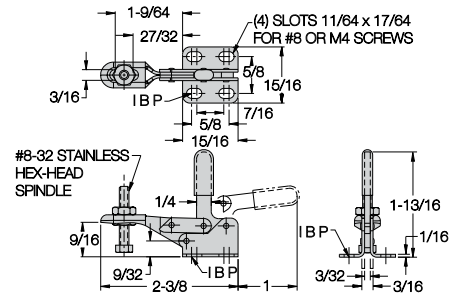
Medium-size clamp. Accepts any 5/16-18 spindle and (2) CL-51610-TW flanged washers. Shipping weight 0.5 lbs.

**Holding capacity:** 625 lbs

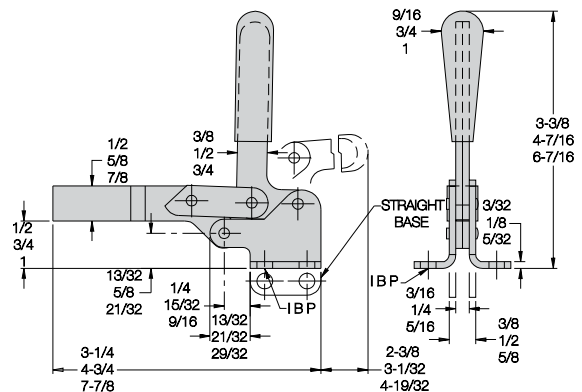
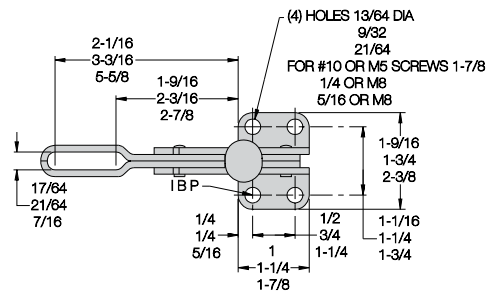
## CL-311-TC Low Open Arm, Flanged Base

Large-size clamp. Arm extends a full 6 inches over workpiece. Accepts any 3/8-16 spindle and (2) CL-3811-TW flanged washers. Shipping weight 1.4 lbs.

**Holding capacity:** 850 lbs



CL-11-TC

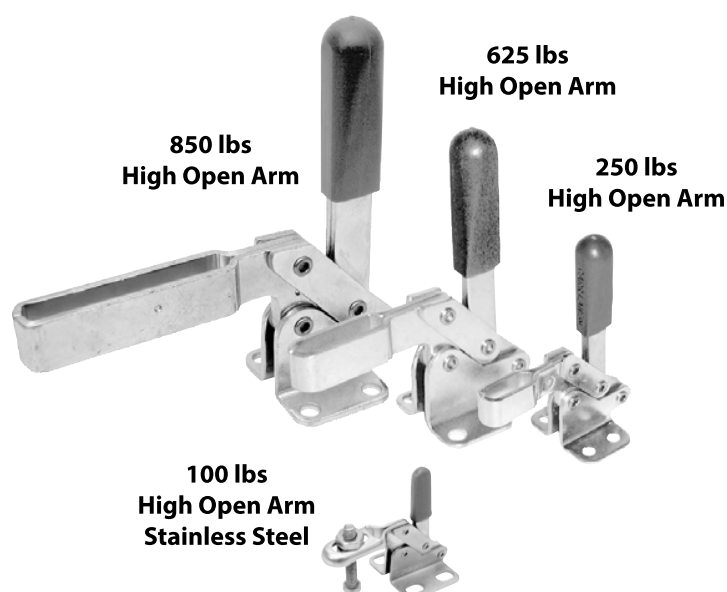


CL-111-TC (Top dimension)  
CL-211-TC (Middle dimension)  
CL-311-TC (Bottom dimension)



# VERTICAL-HANDLE TOGGLE CLAMPS

INFO+: SEE PAGE 415 FOR MATERIAL SPECIFICATIONS



Simple, easy-opening clamps with extra arm height. Open arm allows spindle adjustment. Arm opens 83° while handle moves 83°. Available in four sizes.

## CL-21-TC

High Open Arm, Flanged Base

Miniature clamp in stainless steel. Supplied with #8-32 hex-head spindle CL-832203-SA-S. Shipping weight 0.1 lbs.

Holding capacity: 100 lbs

## CL-101-TC

High Open Arm, Flanged Base

Small-size clamp. Accepts any 1/4-20 spindle and (2) CL-147-TW flanged washers. Shipping weight 0.3 lbs.

Holding capacity: 250 lbs

## CL-201-TC

High Open Arm, Flanged Base

Medium-size clamp. Accepts any 5/16-18 spindle and (2) CL-51610-TW flanged washers. Shipping weight 0.5 lbs.

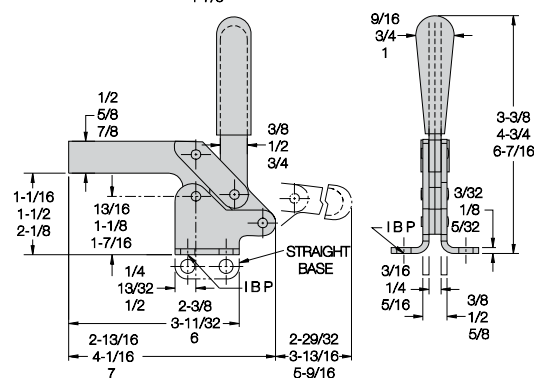
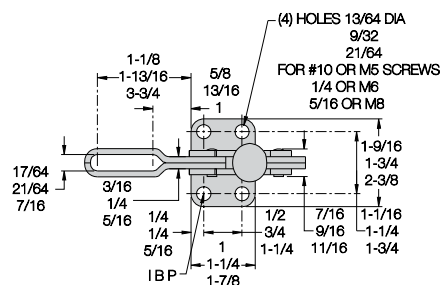
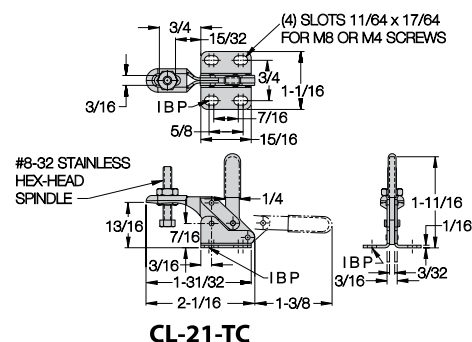
Holding capacity: 625 lbs

## CL-301-TC

High Open Arm, Flanged Base

Large-size clamp. Accepts any 3/8-16 spindle and (2) CL-3811-TW flanged washers. Shipping weight 1.4 lbs.

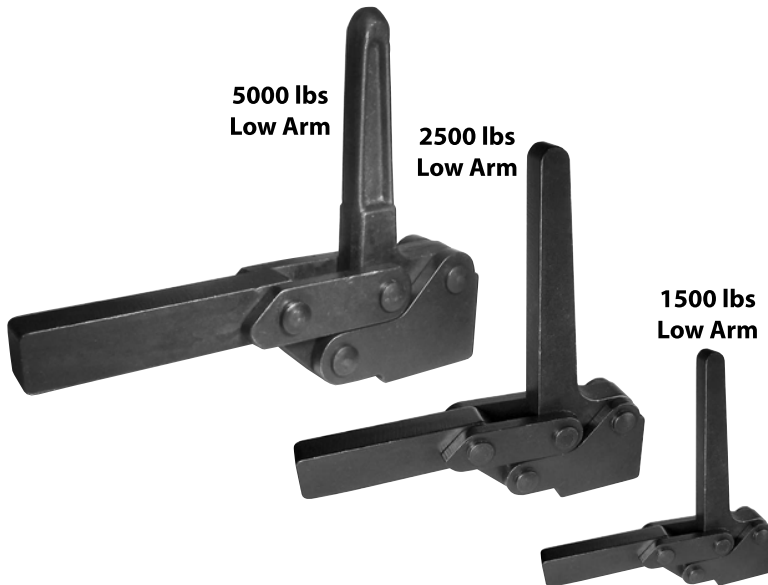
Holding capacity: 850 lbs



CL-101-TC (Top dimension)  
CL-201-TC (Middle dimension)  
CL-301-TC (Bottom dimension)

# VERTICAL-HANDLE TOGGLE CLAMPS

INFO+: SEE PAGE 415 FOR MATERIAL SPECIFICATIONS



Compact heavy-duty clamps with forged steel handles and clamping arms, available in three sizes. Low clamping arm extends far over workpiece. Simple, easy-opening linkage. Arm opens 83° while handle moves 83°. Weld-on flanged base is optional. To order clamp with flanged base attached, add "S" to part no. (example: CL-45-HDC-121S).

## CL-45-HDC-121

Low Arm

Smallest of the three sizes, yet still quite powerful. Shipping weight 2.0 lbs.

Holding capacity:

1500 lbs

## CL-50-HDC-121

Low Arm

Medium-size clamp with high strength. Shipping weight 2.5 lbs.

Holding capacity:

2500 lbs

## CL-51-HDC-121

Low Arm

Largest of the three sizes. Shipping weight 5.0 lbs.

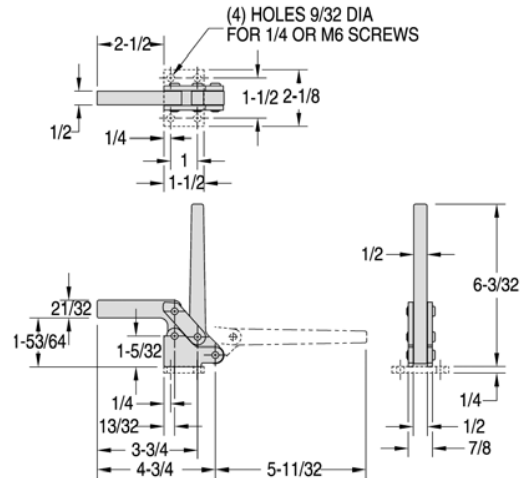
Holding capacity:

5000 lbs

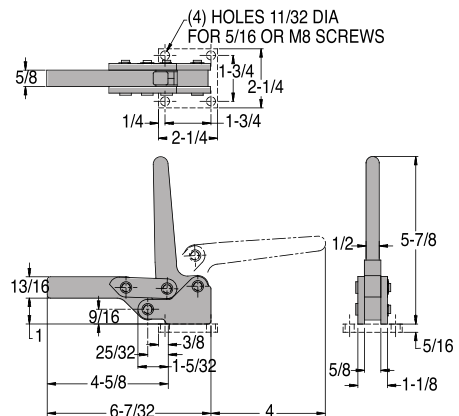
Available with  
standard flanged  
base attached...



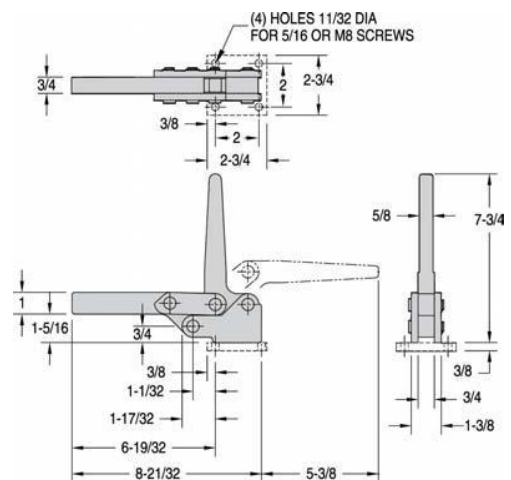
Add "S" to part no.



CL-45-HDC-121



CL-50-HDC-121



CL-51-HDC-121

# VERTICAL-HANDLE TOGGLE CLAMPS

INFO+: SEE PAGE 415 FOR MATERIAL SPECIFICATIONS



Compact heavy-duty clamps with forged steel handles and clamping arms, available in three sizes. High clamping arm provides extra room for thick workpieces. Simple, easy-opening linkage. Arm opens 83° while handle moves 83°. Weld-on flanged base is optional. To order clamp with flanged base attached, add "S" to part no. (example: CL-40-HDC-211S).

## CL-40-HDC-211

High Arm

Smallest of the three sizes, yet still quite powerful. Shipping weight 2.0 lbs.

Holding capacity:

1500 lbs

## CL-60-HDC-211

High Arm

Medium-size clamp with high strength. Shipping weight 2.5 lbs.

Holding capacity:

2500 lbs

## CL-61-HDC-211

High Arm

Largest of the three sizes. Shipping weight 5.0 lbs.

Holding capacity:

5000 lbs

Available with standard flanged base attached...

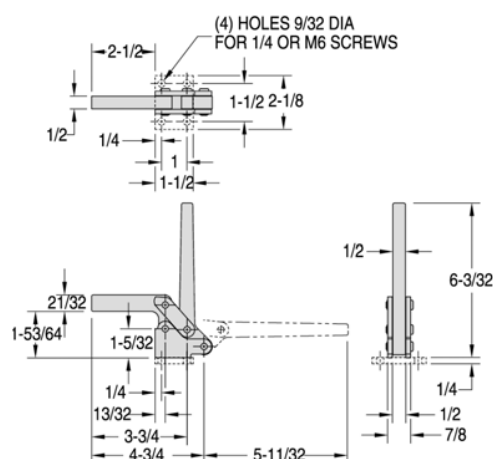


Add "S" to part no.

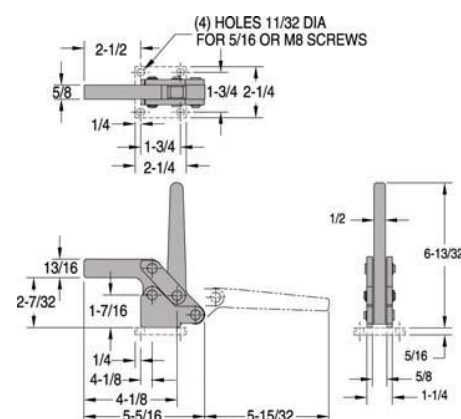
Also available air powered...



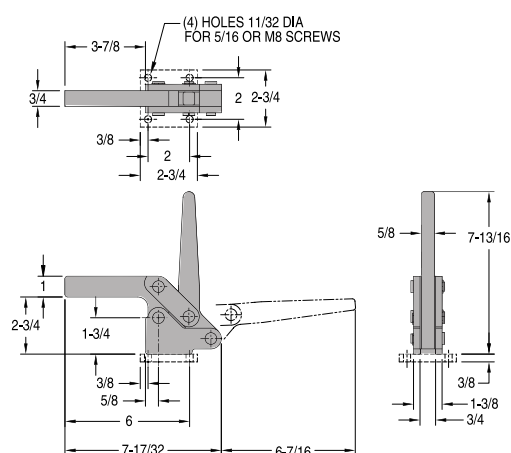
CL-3000-PTC



CL-40-HDC-211



CL-60-HDC-211



CL-61-HDC-211