

LIFTING PINS (STAINLESS STEEL)

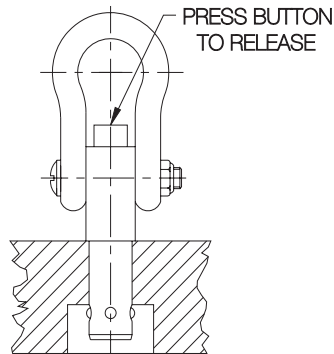
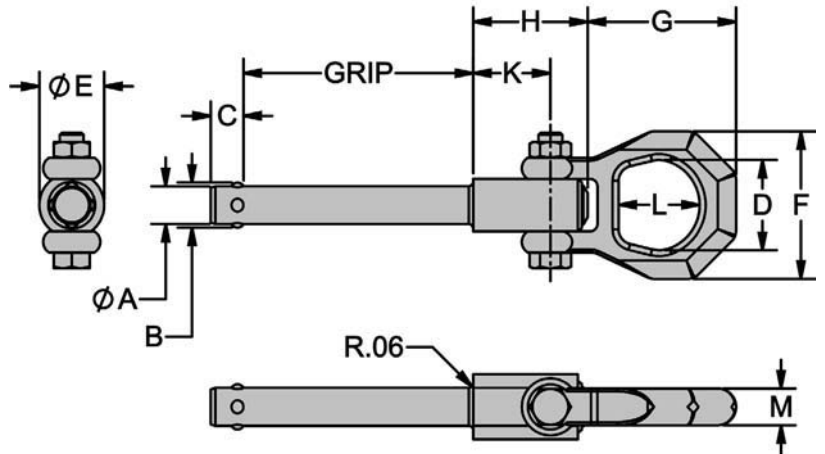
PIN: STAINLESS STEEL, HEAT TREATED PRECIPITATION-HARDENED; BUTTON: ALUMINUM, RED-ANODIZE; SHACKLE: STAINLESS STEEL; SPRING: STAINLESS STEEL

1



Stainless Steel

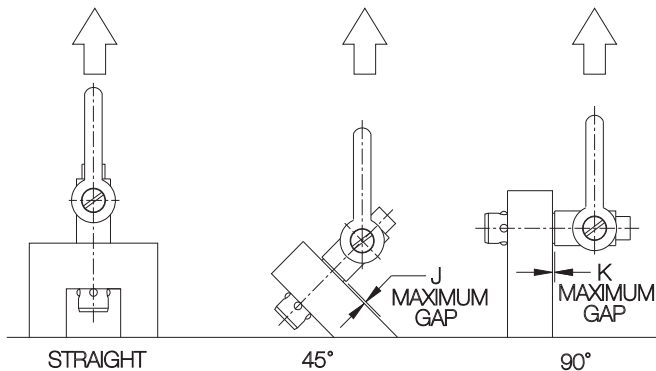
Stainless Steel Lifting Pins are corrosion-resistant single-acting Ball Lock Pins with a solid, one-piece body and four balls for high tension loads. Positive locking until released by pushing the button. Sturdy forged shackle for heavy lifting. **INFO+**: See safety precautions on page 71.



TYPICAL INSTALLATION

STAINLESS STEEL (INCH)

| PART NO. | A DIA | | GRIP LENGTH +.024/-.000 | B | C ±.04 | D | E DIA | F | G | H | K | L | M |
|-------------------|----------|-------------|-------------------------------|------|-----------|------|----------|------|------|------|------|------|------|
| | NOMINAL | ACTUAL | | | | | | | | | | | |
| CL-4-LFPM-0.50-S | 1/4 | .2470/.2485 | 0.50 | .29 | .33 | 1.18 | 0.85 | 1.93 | 1.94 | 1.50 | 1.01 | 1.06 | 0.37 |
| CL-4-LFPM-1.00-S | | | 1.00 | | | | | | | | | | |
| CL-4-LFPM-1.50-S | | | 1.50 | | | | | | | | | | |
| CL-6-LFPM-0.50-S | 3/8 | .3720/.3735 | 0.50 | .44 | .40 | 1.18 | 0.85 | 1.93 | 1.94 | 1.50 | 1.01 | 1.06 | 0.37 |
| CL-6-LFPM-1.00-S | | | 1.00 | | | | | | | | | | |
| CL-6-LFPM-1.50-S | | | 1.50 | | | | | | | | | | |
| CL-6-LFPM-2.00-S | | | 2.00 | | | | | | | | | | |
| CL-6-LFPM-3.00-S | | | 3.00 | | | | | | | | | | |
| CL-8-LFPM-1.00-S | 1/2 | .4970/.4985 | 1.00 | .59 | .44 | 1.18 | 0.85 | 1.93 | 1.94 | 1.50 | 1.01 | 1.06 | 0.37 |
| CL-8-LFPM-1.50-S | | | 1.50 | | | | | | | | | | |
| CL-8-LFPM-2.00-S | | | 2.00 | | | | | | | | | | |
| CL-8-LFPM-3.00-S | | | 3.00 | | | | | | | | | | |
| CL-12-LFPM-1.00-S | 3/4 | .7470/.7485 | 1.00 | .89 | .78 | 1.42 | 1.26 | 2.21 | 2.29 | 2.20 | 1.44 | 1.29 | .43 |
| CL-16-LFPM-1.00-S | 1 | .9970/.9985 | 1.00 | 1.22 | .82 | 1.42 | 1.38 | | | | | | |



TECHNICAL DATA

| PART NO. | LOAD CAPACITY (LBS)* | | | J (45°) | K (90°) | RECOMMENDED HOLE DIA | |
|-------------------|-------------------------|------|------|------------|------------|-------------------------|-------|
| | STRAIGHT | 45° | 90° | | | MAX | MIN |
| CL-4-LFPM-x.xx-S | 210 | 170 | 110 | .031 | .037 | .254 | .250 |
| CL-6-LFPM-x.xx-S | 600 | 540 | 470 | .036 | .042 | .379 | .375 |
| CL-8-LFPM-x.xx-S | 790 | 720 | 630 | | | .505 | .500 |
| CL-12-LFPM-x.xx-S | 2200 | 2200 | 2000 | .041 | .047 | .757 | .750 |
| CL-16-LFPM-x.xx-S | 2900 | 2800 | 2500 | .046 | .052 | 1.010 | 1.000 |

* 5:1 Safety factor, based on the average failing load of test specimens. See above for allowable installation-hole tolerances. Straight pull capacity assumes pin is installed in a hardened tool steel plate or bushing. Use standard lifting hook so that button is not depressed while lifting.

LIFTING PINS

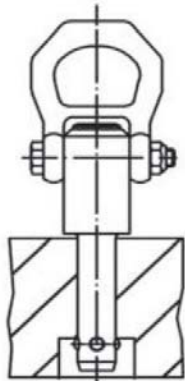
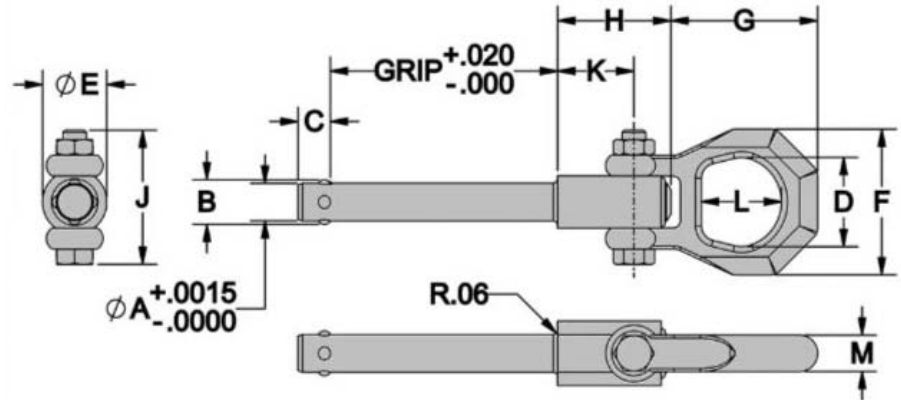
SHANK: ALLOY STEEL, HEAT TREATED, MANGANESE PHOSPHATE FINISH; SPINDLE: ALLOY STEEL, MANGANESE PHOSPHATE FINISH;
 SHACKLE: ALLOY STEEL, HEAT TREATED, MANGANESE PHOSPHATE FINISH; BUTTON: ALUMINUM ALLOY, RED ANODIZED;
 CAP SCREW, NUT, AND BUSHING: STEEL, ZINC PLATED CLEAR CHROMATE; SPRING: STAINLESS STEEL; BALLS: 440C STAINLESS STEEL

1



Alloy Steel

A single-acting ball lock pin with a solid, one-piece body and four balls for high tension loads. Positive locking until released by pushing the button. Sturdy forged shackle for heavy lifting. Manganese phosphate finish provides excellent lubricity and corrosion resistance. **INFO+:** See safety precautions on page 71.



ALLOY STEEL (INCH)

| PART NO. | A DIA | | GRIP LENGTH | B | C | D | E DIA | F | G | H | J | K | L | M |
|----------------|----------|-------------|----------------|-----|-----|------|----------|------|------|------|------|------|------|------|
| | NOMINAL | ACTUAL | | | | | | | | | | | | |
| CL-4-LFPM-0.50 | 1/4 | .2470/.2485 | 0.50 | .29 | .33 | | | | | | | | | |
| CL-4-LFPM-1.00 | | | 1.00 | | | | | | | | | | | |
| CL-4-LFPM-1.50 | | | 1.50 | | | | | | | | | | | |
| CL-6-LFPM-0.50 | 3/8 | .3720/.3735 | 0.50 | .44 | .40 | 1.18 | 0.85 | 1.93 | 1.94 | 1.50 | 2.06 | 1.01 | 1.06 | 0.37 |
| CL-6-LFPM-1.00 | | | 1.00 | | | | | | | | | | | |
| CL-6-LFPM-1.50 | | | 1.50 | | | | | | | | | | | |
| CL-6-LFPM-2.00 | | | 2.00 | | | | | | | | | | | |
| CL-8-LFPM-1.50 | | | 1.50 | | | | | | | | | | | |
| CL-8-LFPM-2.00 | | | 2.00 | | | | | | | | | | | |
| CL-8-LFPM-3.00 | 3.00 | | | | | | | | | | | | | |

TECHNICAL DATA

| PART NO. | LOAD CAPACITY (LBS)* | | | X | | RECOMMENDED HOLE DIA | |
|----------------|----------------------|-----|-----|-----|-----|----------------------|------|
| | STRAIGHT | 45° | 90° | MIN | MAX | MAX | MIN |
| CL-4-LFPM-x.xx | 210 | 170 | 110 | .06 | .20 | .254 | .250 |
| CL-6-LFPM-x.xx | 600 | 540 | 470 | | .39 | .379 | .375 |
| CL-8-LFPM-x.xx | 790 | 720 | 630 | | .59 | .505 | .500 |

* 5:1 Safety factor, based on the average failing load of test specimens. See above for allowable installation-hole tolerances. Straight pull capacity assumes pin is installed in a hardened tool steel plate or bushing. Use standard lifting hook so that button is not depressed while lifting.

