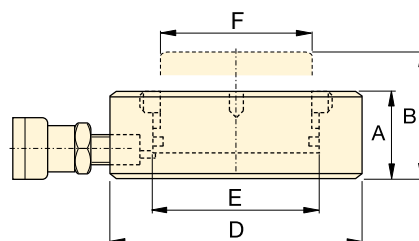


▼ CULP50 Ultra-Flat Cylinder, with Stop Ring

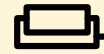


- Up to 4% side load of maximum capacity
- Stop ring for maximum stroke limitation
- Extremely low collapsed height
- Nitrocarburized surface treatment for harsh conditions.

▼ The Ultra-Flat cylinders are designed for applications where high lifting forces are required in confined spaces starting at 2,8 cm.



## CULP Series



Capacity:

**10 - 100 ton**

Stroke:

**6 mm**

Maximum Operating Pressure:

**700 bar**

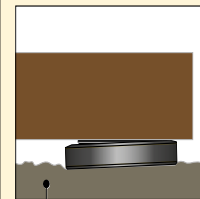


### IMPORTANT!

All Ultra-Flat Cylinders require a solid lifting surface for correct support. The use of these flat cylinders on surfaces such as sand, mud or dirt, may result in cylinder damage.



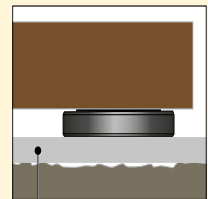
**INCORRECT!**



Rough soil



**CORRECT!**



Flat lifting surface

For more safety instructions see our 'Yellow Pages'.

Page: **396**




### Hoses

Enerpac offers a complete line of high quality hydraulic hoses. To ensure the integrity of your system, specify only Enerpac

hydraulic hoses.

Page: **128**

Cylinder Capacity @ 700 bar ton (kN)	Stroke (mm)	Model Number	Cylinder Effective Area (cm <sup>2</sup> )	Oil Capacity (cm <sup>3</sup> )	Collapsed Height A (mm)	Extended Height B (mm)	Outside Diameter D (mm)	Cylinder Bore Diameter E (mm)	Plunger Diameter F (mm)	 (kg)
<b>10 (97)</b>	6	<b>CULP10</b> <sup>1)</sup>	13,9	8,3	27,5	33,5	72	42	38	1,0
<b>20 (198)</b>	6	<b>CULP20</b> <sup>1)</sup>	28,3	17,0	32,0	38,0	90	60	55	1,7
<b>30 (310)</b>	6	<b>CULP30</b> <sup>1)</sup>	44,2	26,5	35,0	41,0	105	75	67	2,5
<b>50 (550)</b>	6	<b>CULP50</b> <sup>1)</sup>	78,5	47,1	44,5	50,5	140	100	90	5,4
<b>100 (1078)</b>	6	<b>CULP100</b> <sup>2)</sup>	153,9	92,5	65,0	71,0	195	140	125	11,5

<sup>1)</sup> Coupler AR630 including dustcap: use HB7206 hose including AH630 coupler to connect to your pump.

<sup>2)</sup> Coupler CR400 including dustcap: use HC-Series hose including CH604 coupler to connect to your pump.