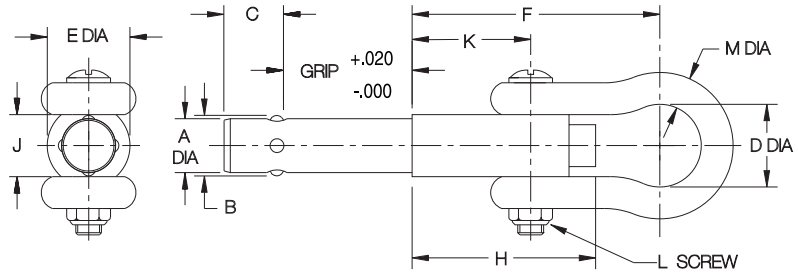


LIFTING PINS

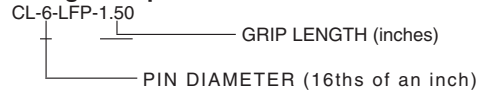


ALLOY STEEL-MATERIAL SPECIFICATIONS ON PAGE 35
FORGED STEEL SHACKLE PER AN116

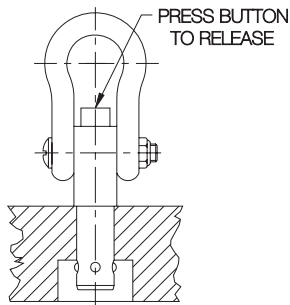


A single-acting ball lock pin with a solid, one-piece body and four balls for high tension loads. Sturdy forged shackle for heavy lifting. Shank diameters from 1/4 to 1" are available, in several standard lengths. See safety precautions on page 35.

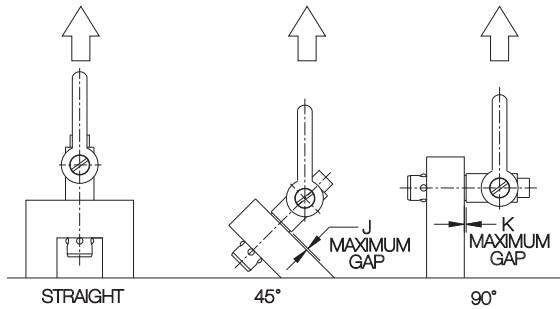
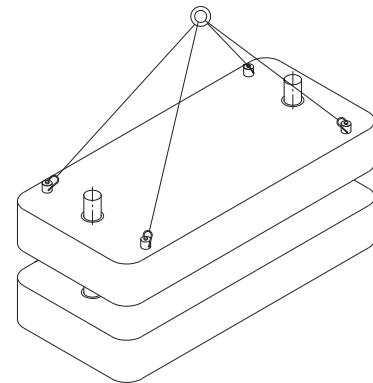
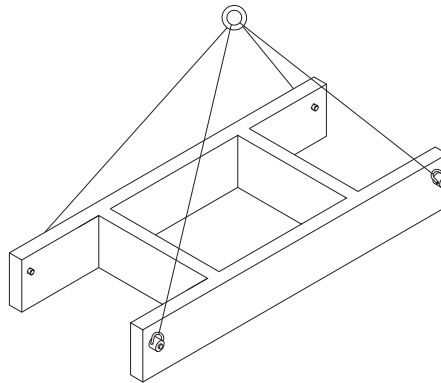
Ordering Example:



PART NO.	NOM. DIA	A DIA		B	C MAX	D DIA	E DIA	F	H	J	K	L	M DIA	STOCK GRIP LENGTHS					
		MIN	MAX											.25	.50	1.00	1.50	2.00	3.00
CL-4-LFP-x.xx	1/4	.2470	.2485	.287	.333	9/16	9/16	1.982	1.500	1/2	7/8	#10	3/16	•	•	•	•	•	•
CL-6-LFP-x.xx	3/8	.3720	.3735	.438	.425	11/16	3/4	2.257	1.600	9/16	15/16	#10	1/4	•	•	•	•	•	•
CL-8-LFP-x.xx	1/2	.4970	.4985	.593	.519	13/16	13/16	2.431	1.800	11/16	1	1/4	5/16	•	•	•	•	•	•
CL-12-LFP-x.xx	3/4	.7470	.7485	.887	.707	15/16	1-1/8	2.791	2.200	7/8	1-1/4	5/16	7/16	•	•	•	•	•	•
CL-16-LFP-x.xx	1	.9970	.9985	1.217	.957	1-1/4	1-3/8	3.426	2.750	1-1/8	1-1/2	3/8	1/2	•	•	•	•	•	•



TYPICAL INSTALLATION



TECHNICAL DATA

PART NO.	LOAD CAPACITY (LBS)*				RECOMMENDED HOLE DIA		
	STRAIGHT	45°	90°	J (45°)	K (90°)	MAX	MIN
CL-4-LFP-x.xx	240	190	140	.031	.037	.254	.250
CL-6-LFP-x.xx	590	600	400	.036	.042	.379	.375
CL-8-LFP-x.xx	1100	1000	880	.041	.047	.505	.500
CL-12-LFP-x.xx	2600	2600	2300	.046	.052	.757	.750
CL-16-LFP-x.xx	3400	3200	2900	.046	.052	1.010	1.000

* 5:1 Safety factor, based on the average failing load of test specimens. See above for allowable installation-hole tolerances. Straight pull capacity assumes pin is installed in a hardened tool steel plate or bushing. Use standard lifting hook so that button is not depressed while lifting.