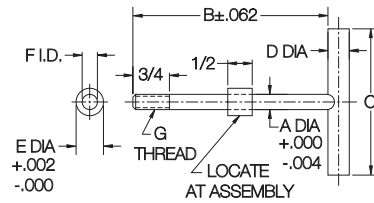
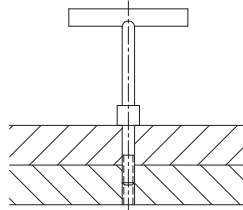


CLAMPING PINS

PIN: 12L14 STEEL, CARBURIZED-HARDENED, BLACK OXIDE FINISH
BUSHING: 12L14 STEEL, BLACK OXIDE FINISH



Threaded alignment pin that is usually used to clamp two parts together. Weld bushing in place at the proper length to suit the application.

USA

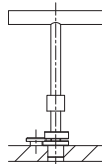
PART NO.	A DIA		B	C	D DIA	E DIA	F DIA	G
	NOMINAL	ACTUAL						
CL-0-CP								#10-24
CL-0A-CP	#10	.193	3	1-1/2	1/4	3/8	.203	#10-24
CL-1-CP	1/4	.250	4	2-1/2	3/8	1/2	.252	1/4-20
CL-2-CP	5/16	.312		3	7/16	9/16	.315	5/16-18
CL-3-CP	3/8	.375	4-1/2	3-1/2	1/2	5/8	.378	3/8-16
CL-4-CP	1/2	.500	5		5/8	3/4	.503	1/2-13

METRIC

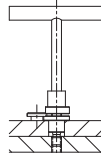
CLM-6-CP	6mm	.236	4	2-1/2	3/8	1/2	.252	M6
CLM-8-CP	8mm	.315		3	7/16	9/16	.315	M8
CLM-10-CP	10mm	.394	4-1/2		1/2	5/8	.378	M10
CLM-12-CP	12mm	.472	5	3-1/2	5/8	3/4	.503	M12

LOCKING CLAMPING PINS

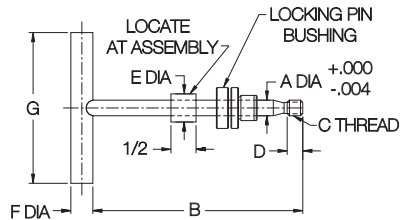
PIN: 12L14 STEEL, CARBURIZED-HARDENED, BLACK OXIDE FINISH
BUSHING: 8620 STEEL, CASE HARDENED, BLACK OXIDE FINISH



Retracted-and-locked position



Clamped position



Similar to the Clamping Pins shown above, except that the pin is positively retained in the bushing. The bushing's spring clip ring locks the pin in fully retracted position by snapping into the pin's groove. Patent No. 3,471,186.

USA

COMPLETE ASSY PART NO.	PIN ONLY PART NO.	BUSHING ONLY PART NO.*	A DIA		B	C	D	E DIA	F DIA	G
			NOMINAL	ACTUAL						
CL-1-LCP-B	CL-1-LCP	CL-4-LPB	1/4	.2490	4	1/4-20	1/4	1/2	3/8	2-1/2
CL-2-LCP-B	CL-2-LCP	CL-5A-LPB	5/16	.3115	4	5/16-18	5/16	9/16	7/16	3
CL-3-LCP-B	CL-3-LCP	CL-6A-LPB	3/8	.3740	4-1/2	3/8-16	3/8	5/8	1/2	3-1/2
CL-4-LCP-B	CL-4-LCP	CL-8A-LPB	1/2	.4990	5	1/2-13	1/2	3/4	5/8	3-1/2

METRIC

CLM-6-LCP-B	CLM-6-LCP	CLM-6-LPB	6mm	.2352	4	M6	.24	1/2	3/8	2-1/2
CLM-8-LCP-B	CLM-8-LCP	CLM-8-LPB	8mm	.3140	4	M8	.31	9/16	7/16	3
CLM-10-LCP-B	CLM-10-LCP	CLM-10-LPB	10mm	.3927	4-1/2	M10	.39	5/8	1/2	3-1/2
CLM-12-LCP-B	CLM-12-LCP	CLM-12-LPB	12mm	.4715	5	M12	.47	3/4	5/8	3-1/2

**NOW ALSO
AVAILABLE
IN METRIC!**