

Electric Drives
and Controls

Hydraulics

Linear Motion and
Assembly Technologies

Pneumatics

Service

Rexroth
Bosch Group

Proportional cartridge throttle valve, with inductive position transducer, pilot operated

RE 29215/09.05 1/18

Type FESX

Nominal size 16, 25, 32, 40, 50
Unit series 1X
Maximum working pressure A, B, X 315 bar, Y 100 bar
Nominal flow rate Q_{nom} 980 l/min



Overview of Contents

Contents	Page
Features	1
Ordering data	2
Preferred types	2
Symbol	2
Function, sectional diagram	3
Technical data	4 and 5
External trigger electronics	6 to 8
Characteristic curves	9 and 10
Unit dimensions	11 to 15
Installation dimensions	16 and 17

Features

- Pilot operated throttle valves with inductive position transducer
- Design: cartridge type DIN 24342, ISO/DIS 7368
Control oil external X and Y
- Adjustable via the position-controlled main stage by means of the position transducer and the external valve electronics
- Hysteresis <0.2%, positioning accuracy >0.5%, see Technical Data
- Plug-in connector to DIN 43650-AM2 for the solenoid and plug-in connector for the position transducer, included in scope of delivery
- Data for the external trigger electronics
 - $U_B = 24 V_{nom}$ DC
 - Adjustment of valve curve N_p and gain, with and without ramp generator
 - Europe card format, setpoint 0...+10 V (order separately)

Function, sectional diagram

General

Type FESX proportional throttle valves are pilot operated and in "cartridge" design. This results in their compact form despite high flow rates.

The electronics, which take the form of an external valve amplifier in Europe card format, trigger the solenoid of the pilot valve and thus control the position of the main stage.

Hysteresis is <0.2%, and a position accuracy of >0.5% is achieved.

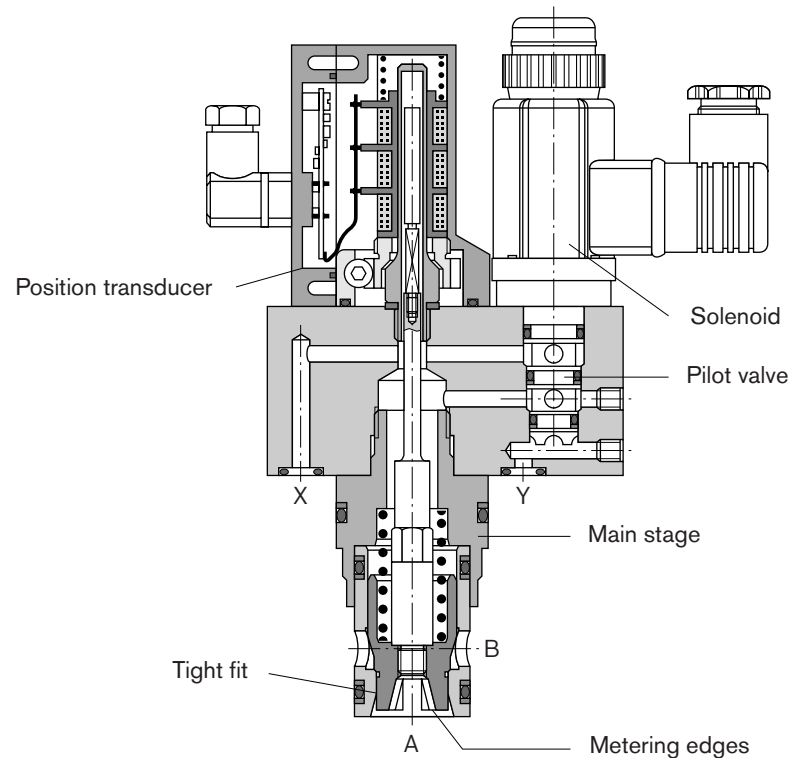
Basic principle

Pilot operated 2/2-way cartridge valves.






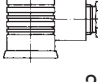
There is a free choice of directions of flow, A → B or B → A, but please note:

- Always route "Y" externally
- Pressure at "X" must always be equal to or greater than at "A" and not below 12 bar when A → B.
- Pressure at "X" must always be equal to or greater than at "B" and not below 20 bar when B → A.

If the valve is shut down electrically and is supplied externally with sufficient pressure at "X", the main stage A → B may be employed as a poppet valve.



Accessories

Type	Material Number		
(4 x) ISO 4762	Cheese-head bolts included in scope of delivery		
Europe card  	VT-VRPA1-527-20/V0/2/2V	RE 30055	0 811 405 076
Europe card  	VT-VRPA1-527-20/V0/RTS-2/2V	RE 30053	0 811 405 074
Plug-in connectors  	Plug-in connector 2P+PE (M16x1.5) for the solenoid and plug-in connector 4P (Pg7) for the position transducer. Included in scope of delivery, see also RE 08008.		

Testing and service equipment

Test box type VT-PE-TB2, see RE 30064

Test adapter for Europe cards type VT-PA-3, see RE 30070

Technical data

General

Construction	Cartridge type throttle valve, spool valve with closed-loop position control via Europe card
Actuation	Pilot operated, proportional 3/2-way directional control valve in valve cover, without position control
Main stage	Position control via external trigger electronics and position transducer LVDT DC/DC
Connection type	Cartridge type, mounting hole configuration to DIN 24342, ISO/DIS 7368
Mounting position	Horizontal if possible, or position transducer at the bottom
Ambient temperature range	°C -20...+50
Vibration resistance, test condition	Max. 25 g, shaken in 3 dimensions (24 h)

Hydraulic (measured with HLP 46, $\vartheta_{oil} = 40^\circ\text{C} \pm 5^\circ\text{C}$)

Pressure fluid	Hydraulic oil to DIN 51524...535, other fluids after prior consultation					
Viscosity range,	recommended	mm ² /s	20...100			
	max. permitted	mm ² /s	10...800			
Pressure fluid temperature range	°C	-20...+80				
Maximum permitted degree of contamination of pressure fluid Purity class to ISO 4406 (c)	Class 18/16/13 ¹⁾					
Direction of flow	A → B or B → A (when X supplied "internally", or "externally" when pressure higher)					
Nominal flow rate at $\Delta p = 5$ bar per edge*	l/min	NG16	NG25	NG32	NG40	NG50
		125	210	320	500	980
Weight	kg	2.8	3.9	5.1	7.1	9.7
Max. working pressure in A, B, X	bar	315	315	315	315	315
Max. working pressure in Y	bar	100	100	100	100	100
Q_{max}	l/min	350	600	1000	1500	3000
Q_N pilot valve (supply) $\Delta p = 5$ bar	l/min	5	15	15	28	28
Leakage X → Y Pilot valve at 100 bar	cm ³ /min	<150	<200	<200	<400	<400
Min. flow rate at $U_E = 0$ V adjustable Valve active ($\Delta p = 5$ bar)	cm ³ /min	2000	2000	3000	3000	4000
Leakage in main stage at $\Delta p = 100$ bar (valve shut down electrically)	A → B = tight (poppet valve) B → A = tight (poppet valve) Note: min. leakage X → B, possible when X = external					
Minimum supply pressure A → B	bar	12	12	12	12	12
Minimum supply pressure B → A	bar	20	20	20	20	20

* Flow for other values of Δp $Q_X = Q_{nom} \cdot \sqrt{\frac{\Delta p_X}{5}}$

¹⁾ The purity classes stated for the components must be complied with in hydraulic systems. Effective filtration prevents problems and also extends the service life of components.

For a selection of filters, see catalog sheets RE 50070, RE 50076 and RE 50081.

Technical data

Static/Dynamic ¹⁾		NG16	NG25	NG32	NG40	NG50
Spool stroke/characteristic curve	+ mm	4	5	7	10	12.5
Overlap on shutdown	- mm	3	3	3	3	3
Control oil volume of main stage 100 %	cm ³	1.02	2.66	6.36	12.57	24.54
Required control oil 0...100 %, x = 100 bar	l/min	3	5	7	9	9
Hysteresis	%	<0.2	<0.2	<0.2	<0.2	<0.2
Positioning accuracy	%	<0.5	<0.5	<0.5	<0.5	<0.5
Manufacturing tolerance		See flow curves, adjustable via external trigger electronics				
Response time (x = 100 bar)	ms					
Signal change 0...100 %	"open"	<70	<70	<90	<90	<110
Signal change 100... 0 %	"close"	<70	<70	<90	<130	<300
Signal change 0... 10 %	"open"	<50	<50	<70	<70	<80
Signal change 10... 0 %	"close"	<40	<40	<50	<70	<100
Switch-off behavior, enable "OFF"		After electrical shutdown (pilot valve opens "X" to the main stage), main stage moves to closed end position				
Thermal drift		<1 % at $\Delta T = 40^\circ\text{C}$				

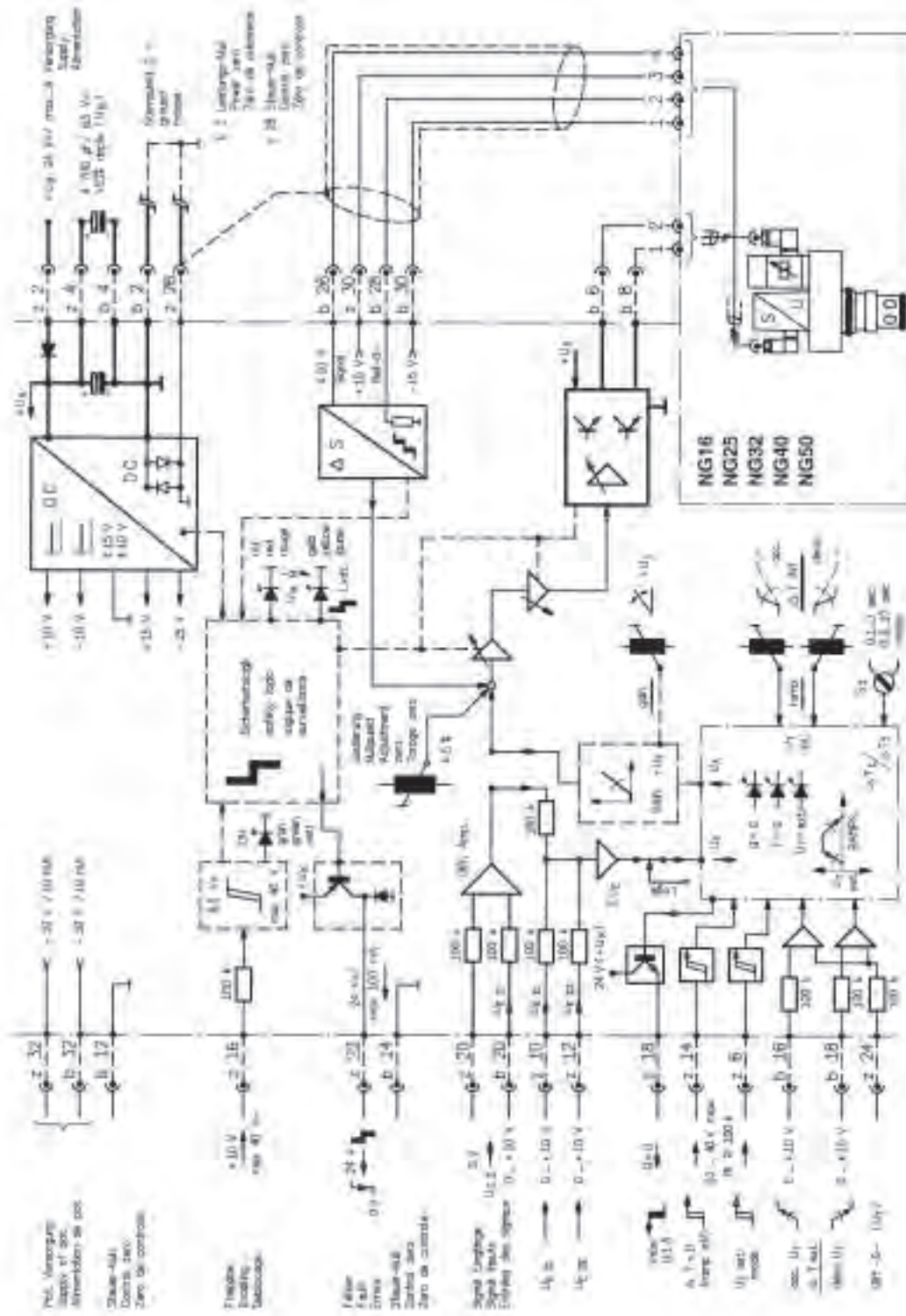
Electrical

Cyclic duration factor	%	100
Degree of protection		IP 65 to DIN 40050 and IEC 14434/5
Solenoid connection		Unit plug DIN 43650/ISO 4400, M16x1.5 (2P+PE)
Position transducer connection		Special plug (4P/Pg7)
Max. solenoid current	I_{\max}	2.7 A
Coil resistance R_{20}	Ω	2.5
Max. power consumption at 100 % load and operating temperature	VA	40
Position transducer DC/DC technology		Supply: +15 V/35 mA -15 V/25 mA Signal: 0...±10 V ($R_L \geq 10 \text{ k}\Omega$)

¹⁾ All characteristic values ascertained using amplifier 0 811 405 076 (without ramp).

Valve with external trigger electronics (europe card without ramp, RE 30053)

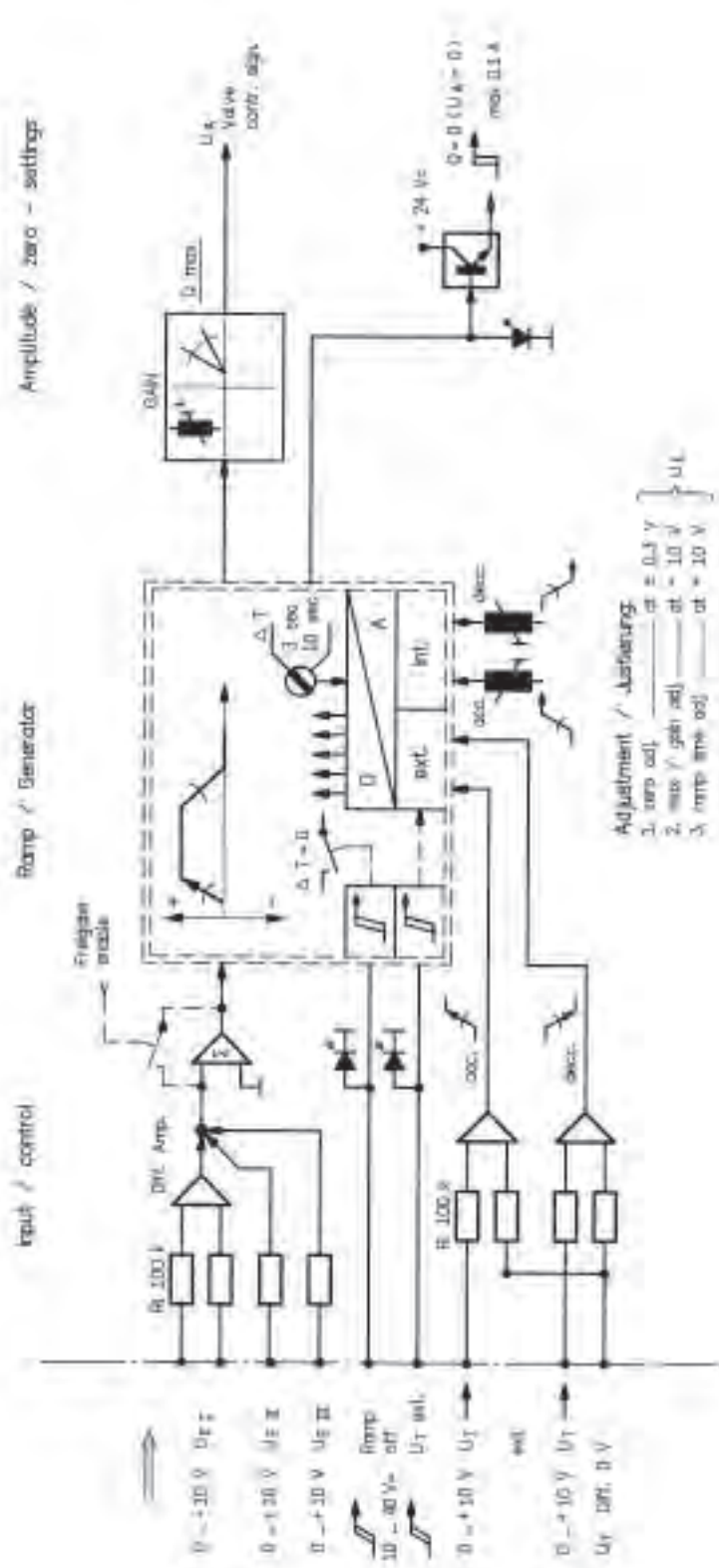
Circuit diagram/pin assignment



See functional diagram of ramp control on page 8

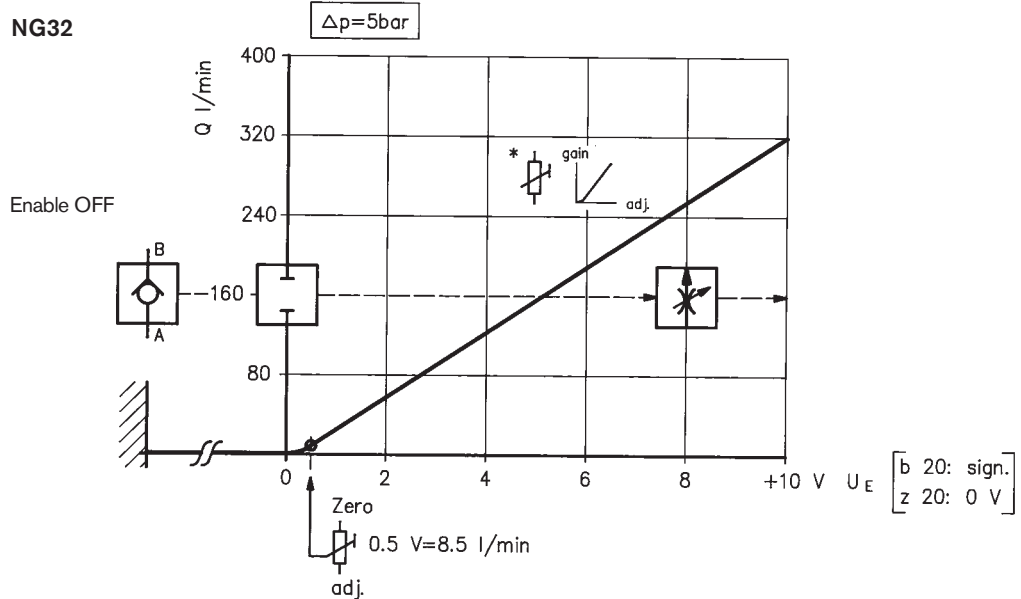
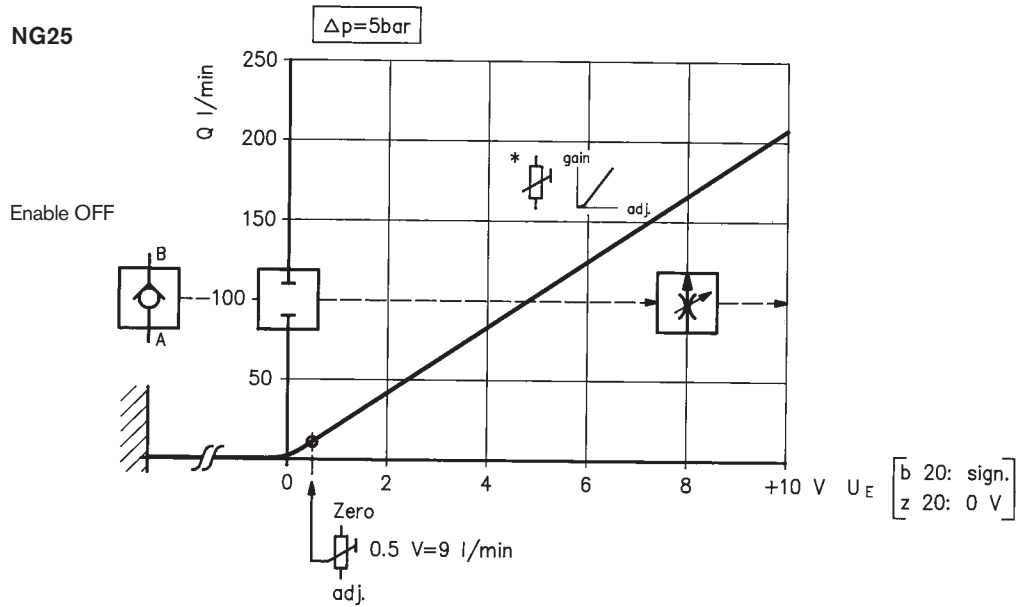
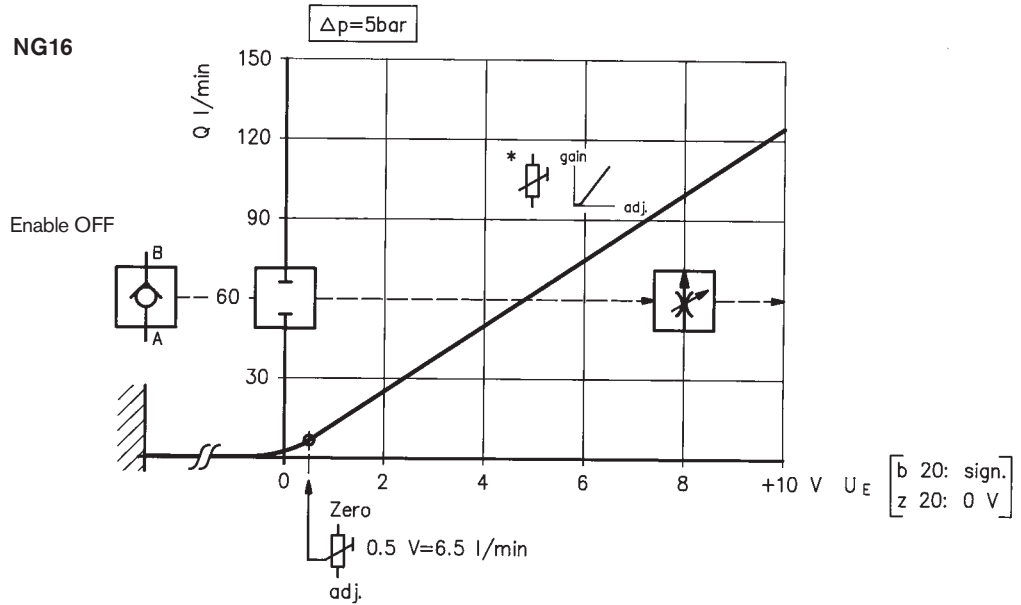
Valve with external trigger electronics (europe card with ramp, RE 30053)

Functional diagram of ramp control



Characteristic curves (measured with HLP 46, $\vartheta_{oil} = 40^\circ\text{C} \pm 5^\circ\text{C}$)

$\Delta p = 5 \text{ bar}$
 $v = 36 \text{ mm}^2/\text{s}$

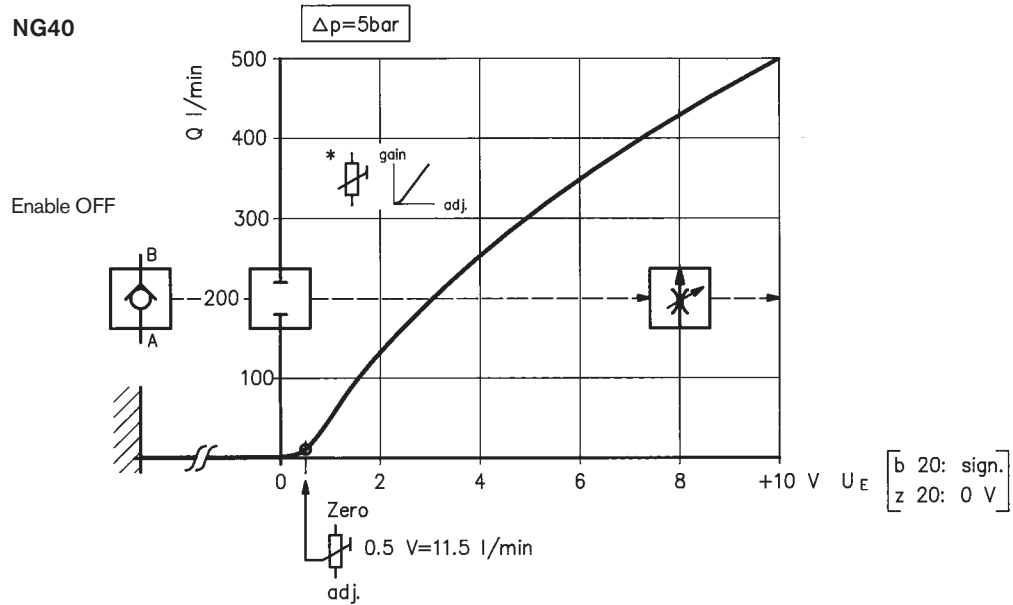


* Amplifier

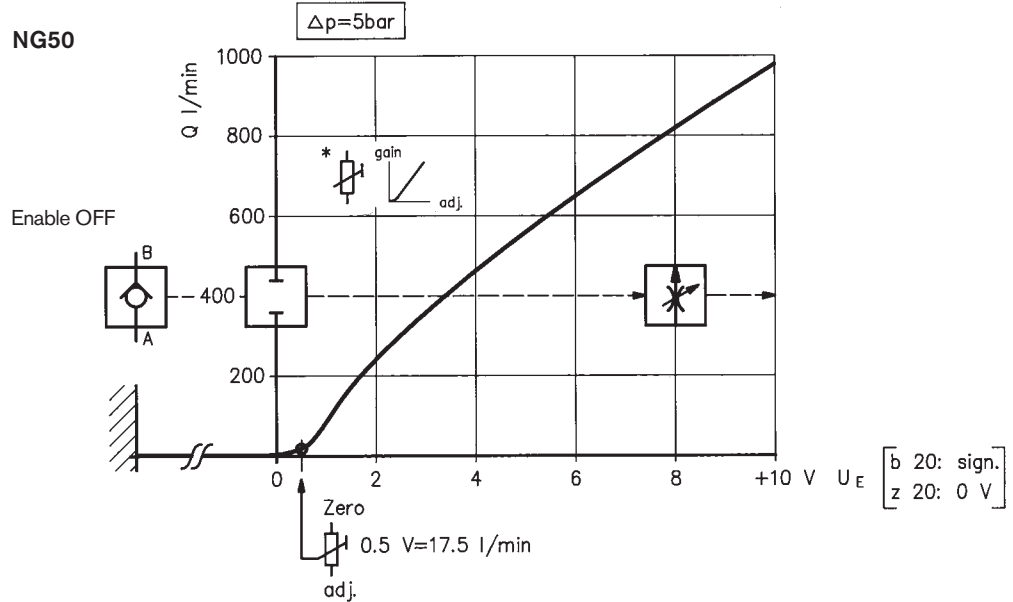
Characteristic curves (measured with HLP 46, $\vartheta_{oil} = 40^\circ\text{C} \pm 5^\circ\text{C}$)

$\Delta p = 5 \text{ bar}$
 $v = 36 \text{ mm}^2/\text{s}$

NG40

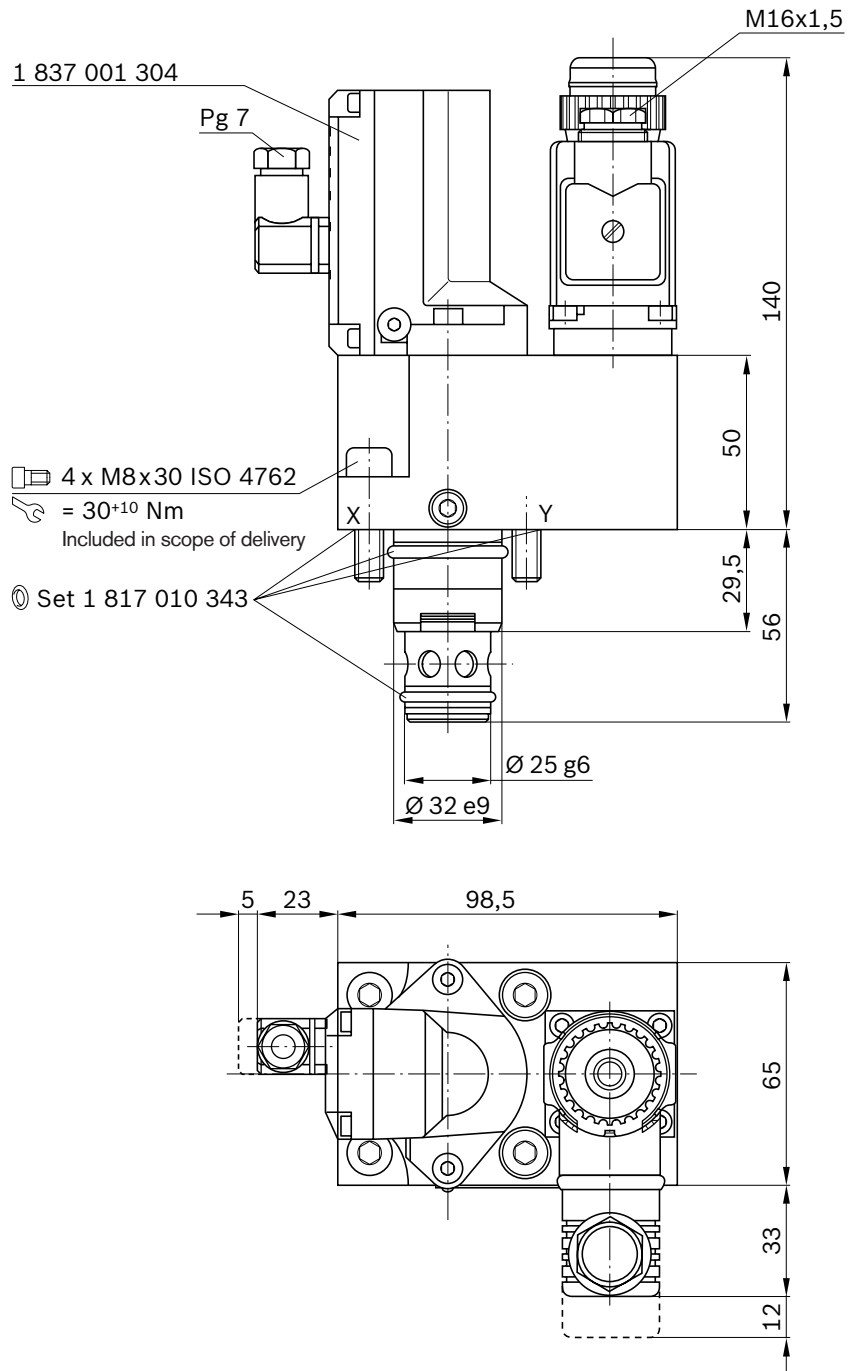


NG50



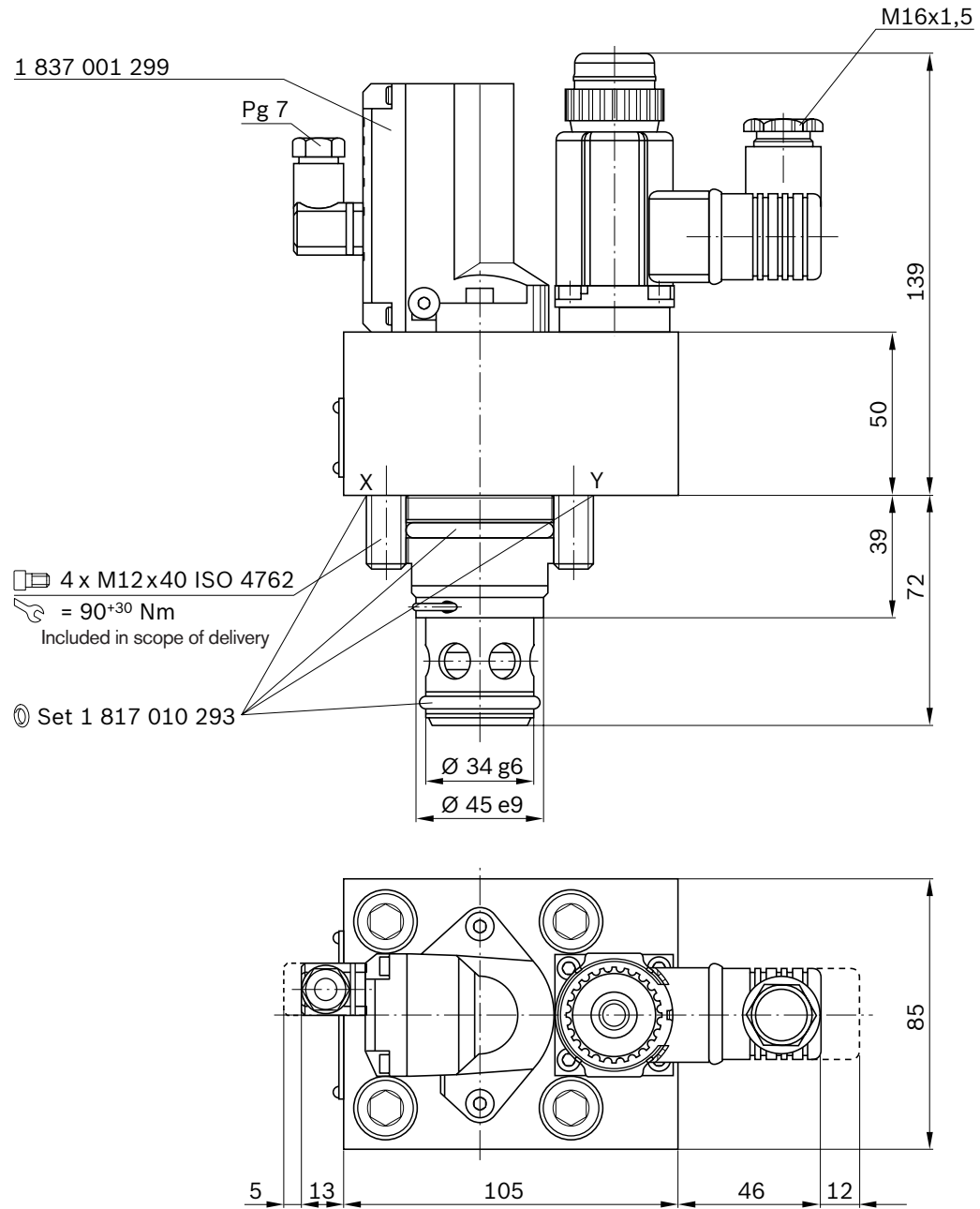
* Amplifier

Unit dimensions NG16 (nominal dimensions in mm)



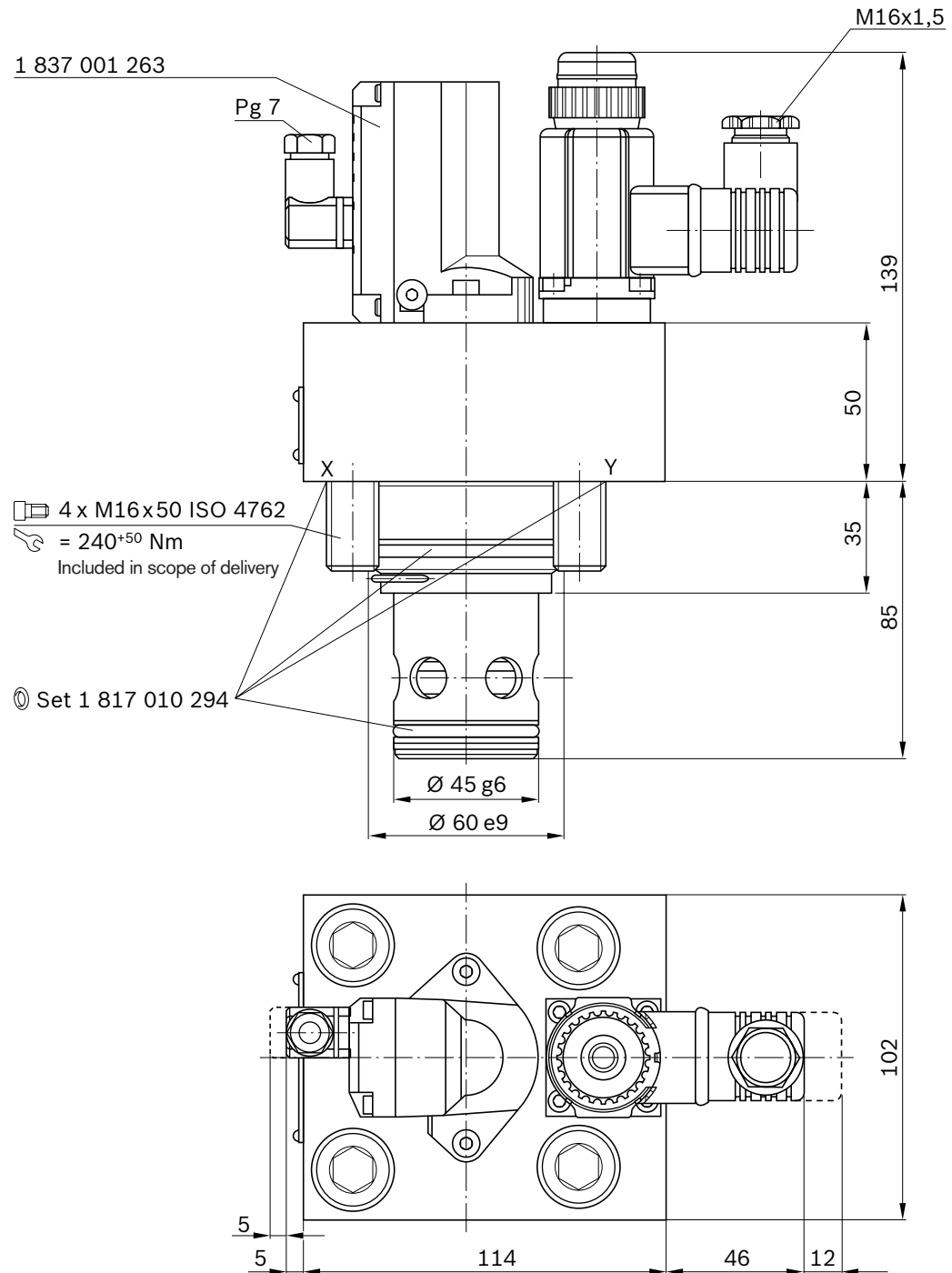
See installation dimensions on page 16

Unit dimensions NG25 (nominal dimensions in mm)



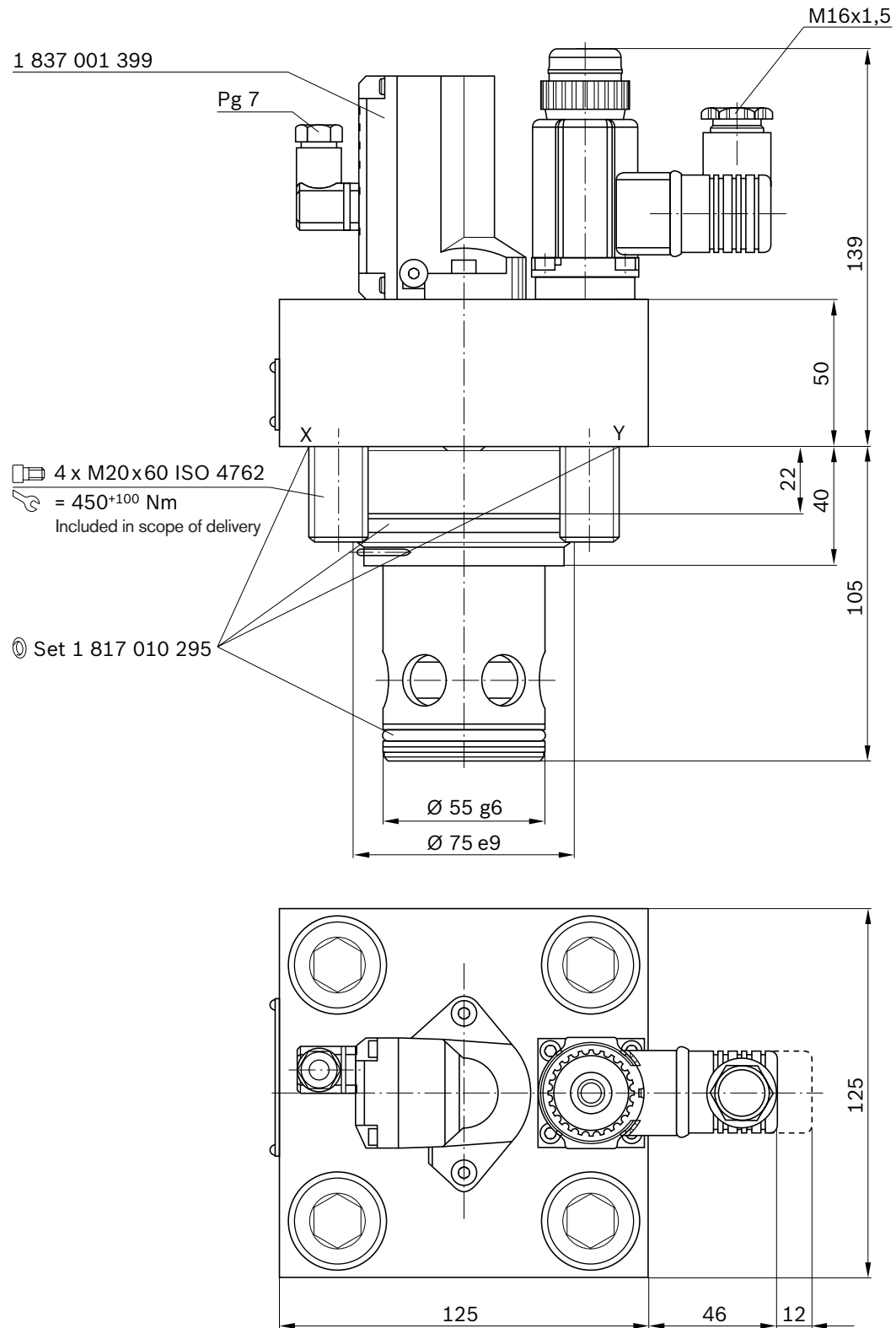
See installation dimensions on page 16

Unit dimensions NG32 (nominal dimensions in mm)



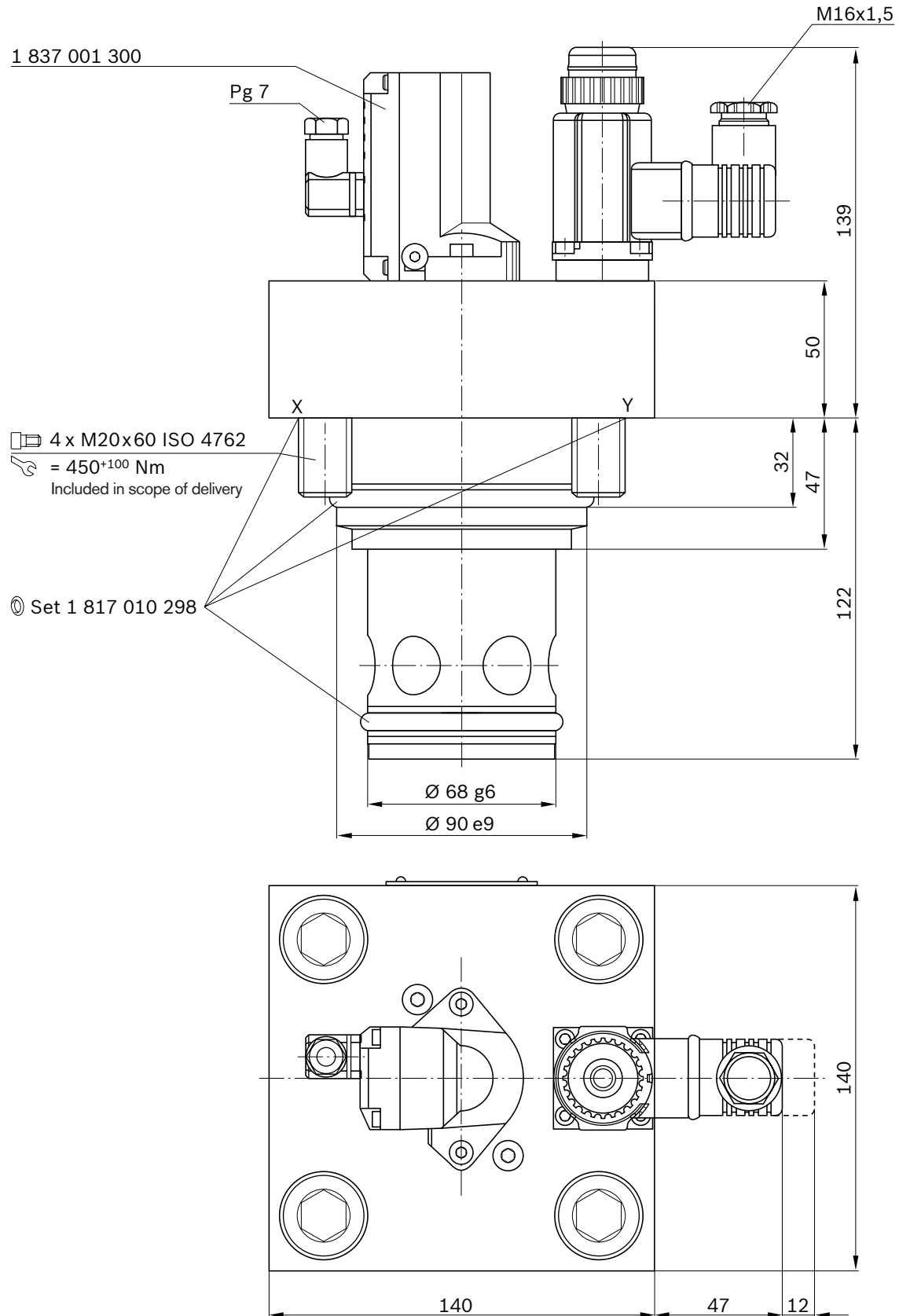
See installation dimensions on page 16

Unit dimensions NG40 (nominal dimensions in mm)



See installation dimensions on page 17

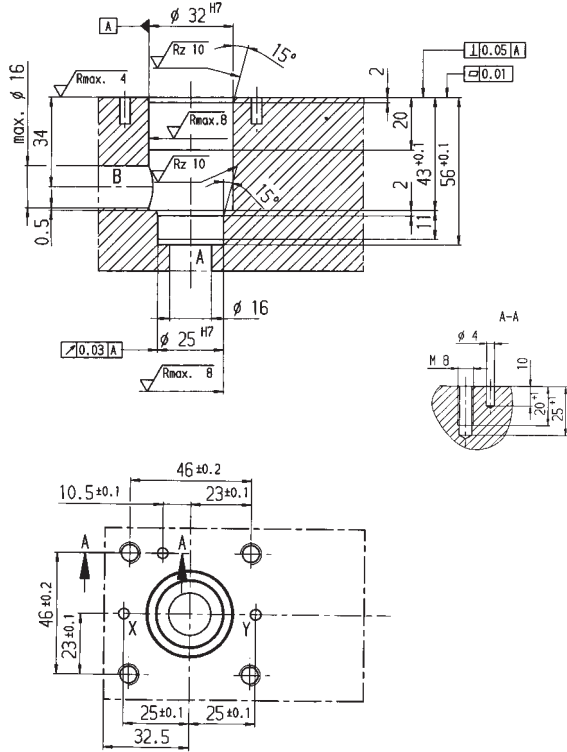
Unit dimensions NG50 (nominal dimensions in mm)



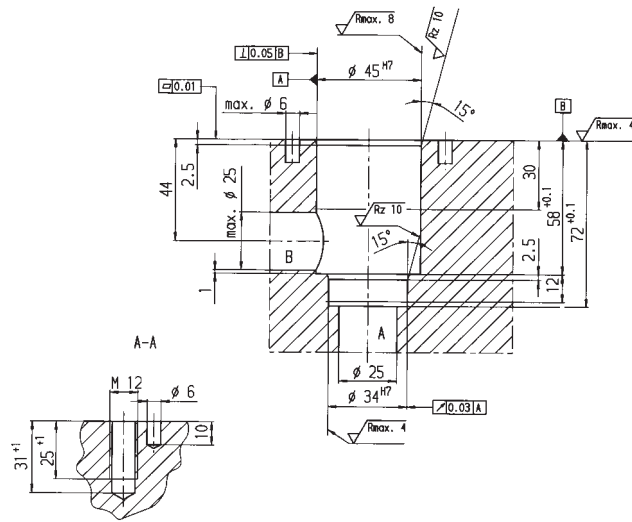
See installation dimensions on page 17

Installation dimensions DIN 24342, ISO/DIS 7368 (nominal dimensions in mm)

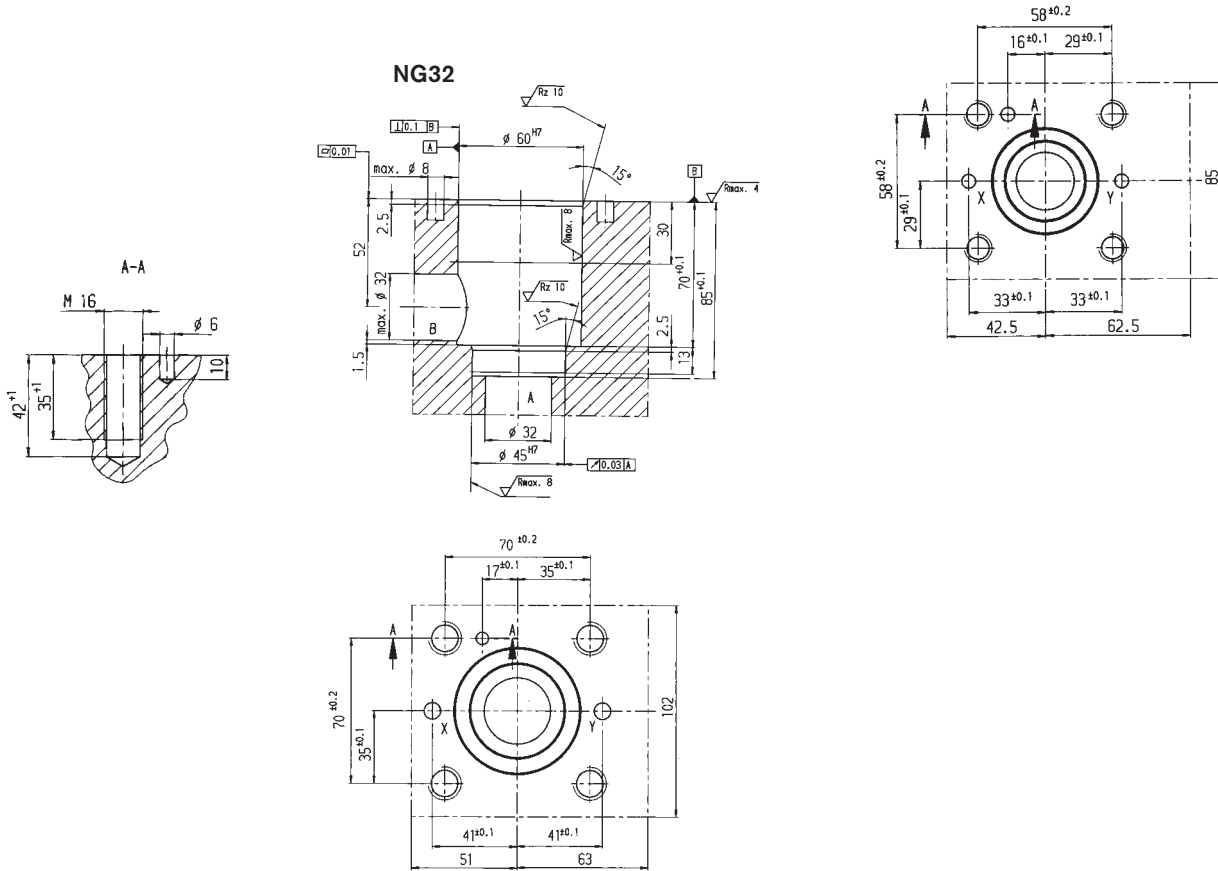
NG16



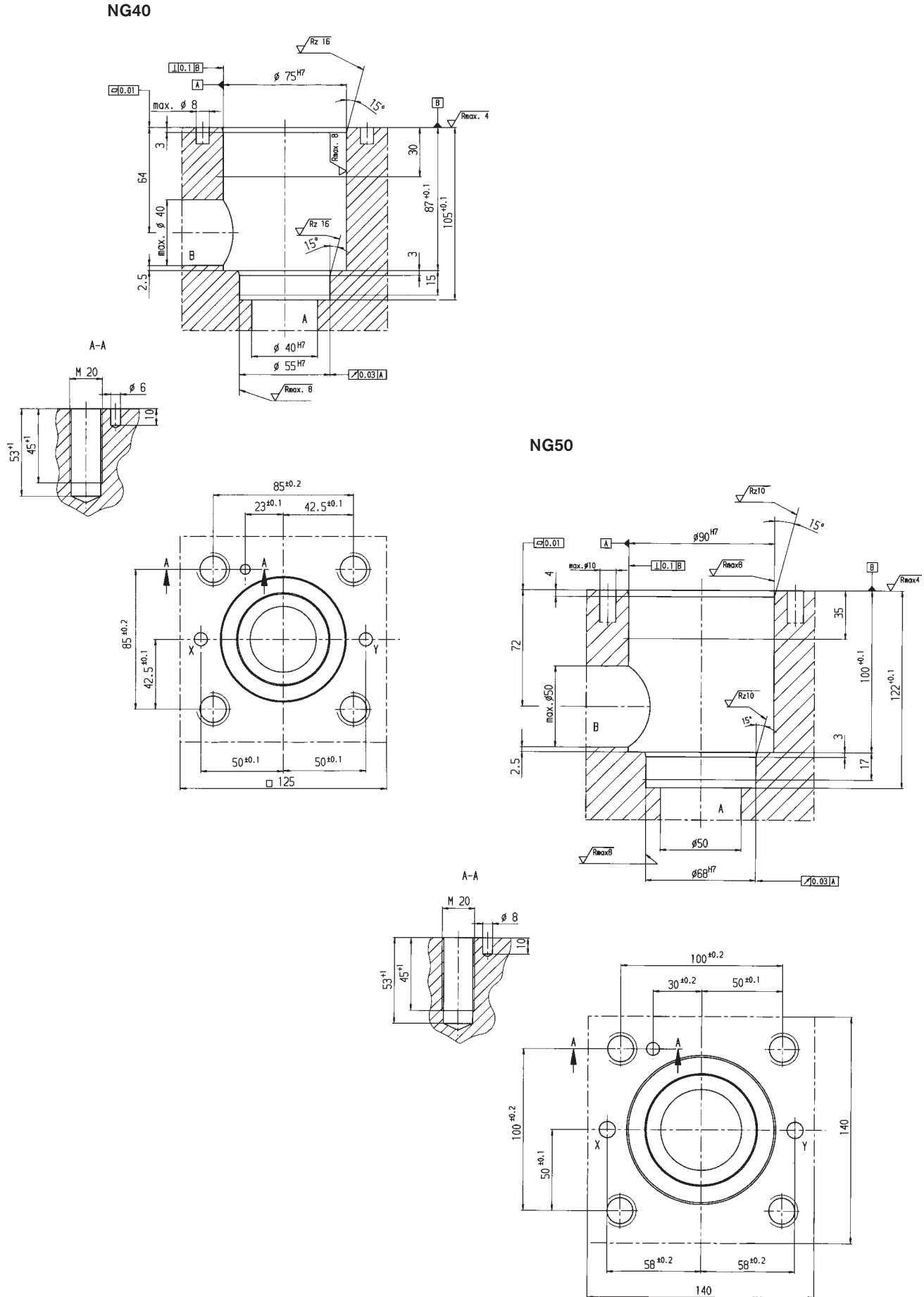
NG25



NG32



Installation dimensions DIN 24342, ISO/DIS 7368 (nominal dimensions in mm)



Notes

Bosch Rexroth AG
Hydraulics
Zum Eisengießer 1
97816 Lohr am Main, Germany
Telefon +49 (0) 93 52 / 18-0
Telefax +49 (0) 93 52 / 18-23 58
documentation@boschrexroth.de
www.boschrexroth.de

© This document, as well as the data, specifications and other information set forth in it, are the exclusive property of Bosch Rexroth AG. It may not be reproduced or given to third parties without its consent.
The data specified above only serve to describe the product. No statements concerning a certain condition or suitability for a certain application can be derived from our information. The information given does not release the user from the obligation of own judgement and verification. It must be remembered that our products are subject to a natural process of wear and aging.

RE 29215/09.05 | FESX

Hydraulics | Bosch Rexroth AG

Notes

Bosch Rexroth AG
Hydraulics
Zum Eisengießer 1
97816 Lohr am Main, Germany
Telefon +49 (0) 93 52 / 18-0
Telefax +49 (0) 93 52 / 18-23 58
documentation@boschrexroth.de
www.boschrexroth.de

© This document, as well as the data, specifications and other information set forth in it, are the exclusive property of Bosch Rexroth AG. It may not be reproduced or given to third parties without its consent.
The data specified above only serve to describe the product. No statements concerning a certain condition or suitability for a certain application can be derived from our information. The information given does not release the user from the obligation of own judgement and verification. It must be remembered that our products are subject to a natural process of wear and aging.

Notes

Bosch Rexroth AG
Hydraulics
Zum Eisengießer 1
97816 Lohr am Main, Germany
Telefon +49 (0) 93 52 / 18-0
Telefax +49 (0) 93 52 / 18-23 58
documentation@boschrexroth.de
www.boschrexroth.de

© This document, as well as the data, specifications and other information set forth in it, are the exclusive property of Bosch Rexroth AG. It may not be reproduced or given to third parties without its consent.
The data specified above only serve to describe the product. No statements concerning a certain condition or suitability for a certain application can be derived from our information. The information given does not release the user from the obligation of own judgement and verification. It must be remembered that our products are subject to a natural process of wear and aging.