

Electric Drives
and Controls

Hydraulics

Linear Motion and
Assembly Technologies

Pneumatics

Service

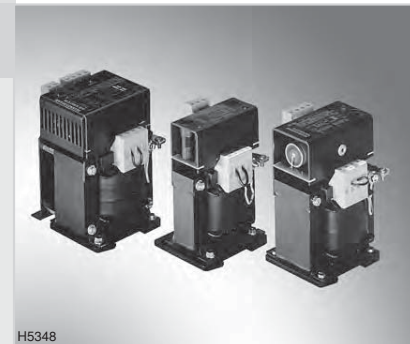
Rexroth
Bosch Group

Compact power supply units

RE 29929/03.09
Replaces: 03.05

1/4

VT-NE30, component series 2X
VT-NE31, component series 1X
VT-NE32, component series 1X



H5348

Table of contents

Contents	
Features	1
Ordering code	2
Technical data	2
Terminal assignment	2
Unit dimensions	3

Features

Page	
1	– Power supply unit VT-NE30 (unipolar output voltage):
2	• For the voltage supply of amplifiers for proportional valves
2	• For the voltage supply of proportional valves with integrated electronics
2	– Power supply unit VT-NE31 (bipolar output voltage):
2	• For the voltage supply of amplifiers for servo-valves
3	– Power supply unit VT-NE32 (unipolar output voltage):
	• Same function as power supply unit VT-NE30
	• In addition, regulated output voltage for the supply of closed-loop control or evaluation electronics or accessory components such as pressure transducers, position measuring systems
	– Compact design, connection via terminal strip
	– Unregulated output voltages (filtered); with VT-NE32 additionally regulated output voltage
	– Short-circuit protection by miniature fuses in output circuits; with VT-NE32 cut-off of the regulated output voltage after approx. 1.5 s in the case of overloading or short-circuit; restart by pressing the “reset” key
	– Can be screwed on or snapped onto top hat rail EN 60715
	– LED indicator lamps
	– Conformity with EC Directives (CE mark)

Ordering code

	VT-1X/ *	
Compact power supply unit, bipolar	= NE31	Further details in clear text Series 10 to 19 (10 to 19: unchanged technical data and pin assignment)
Compact power supply unit, unipolar and regulated	= NE32	
	1X =	

	VT-2X/ *	
Compact power supply unit, unipolar	= NE30	Further details in clear text Series 20 to 29 (20 to 29: unchanged technical data and pin assignment)
	2X =	

Technical data (for applications outside these parameters, please consult us!)

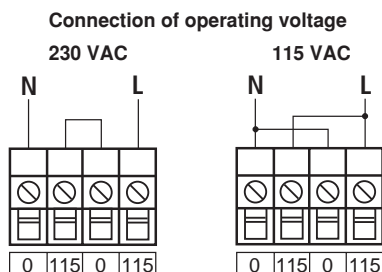
		VT-NE30		VT-NE31		VT-NE32	
				Output 1	Output 2	Output 1	Output 2
		Filtered	Filtered	Filtered	Filtered	Filtered	Controlled
Operating voltage	U	230 VAC $\pm 10\%$ or 115 VAC $\pm 10\%$					
Frequency	f	50/60 Hz					
Output	P_O	108 W	6 W	6 W	60 W	24 W	
Output voltage (at $U = 230$ VAC):							
- No load	U_O	+32 VDC ¹⁾	+27 VDC ¹⁾	-27 VDC ¹⁾	+30 VDC ¹⁾	+24 VDC	
- Full load	U_O	+26 VDC ¹⁾	+24 VDC ¹⁾	-24 VDC ¹⁾	+25 VDC ¹⁾	+24 VDC	
Load current	I_{max}	4 A	0.25 A	0.25 A	2.5 A	1 A	
Residual ripple content (full load)	U_{eff}	< 5 %	< 5 %	< 5 %	< 2 %	< 50 mVAC	
Fuse	I_F	8 A slow-blow	0.8 A slow-blow	0.8 A slow-blow	4 A slow-blow	See features	
Connection cross-section	A	max. 4 mm ²					
Permissible ambient temperature range	ϑ	-20 to +50 °C					
Storage temperature range	ϑ	-20 to +70 °C					
Weight	m	3.1 kg	1.1 kg		2.2 kg		

¹⁾ In the case of deviations of $\pm 10\%$ from operating voltage $U = 230$ VAC, the output voltage U_O changes by $\pm 10\%$.

Note:

For details regarding **environment simulation testing** in the fields of EMC (electromagnetic compatibility), climate and mechanical stress, see RE 29929-U (declaration on environmental compatibility).

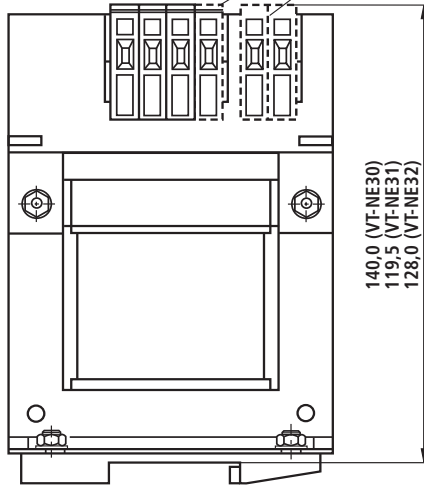
Terminal assignment



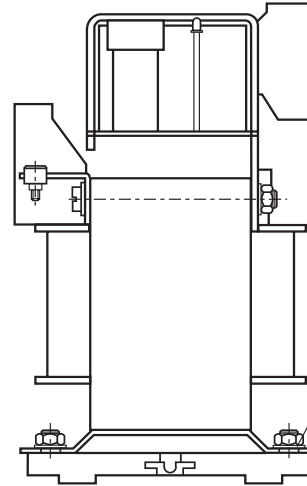
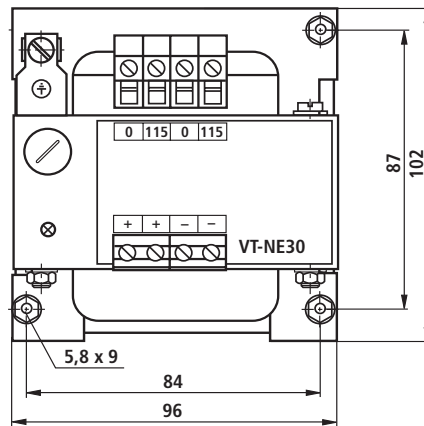
Compact power supply units VT-NE30 to VT-NE32 are ready for connection for an operating voltage of 230 VAC.
For screwed mounting, remove the plate for hat rail mounting.

Unit dimensions (dimensions in mm)

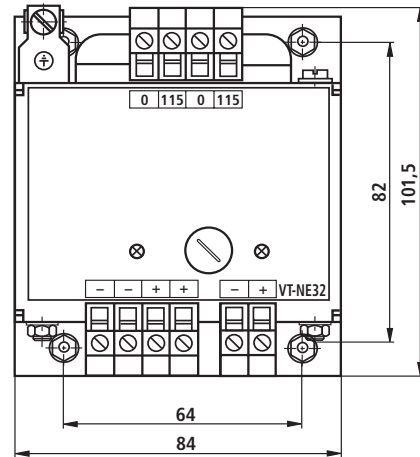
4th connection on the secondary side with VT-NE30 and VT-NE32 only
5th and 6th connection on the secondary side with VT-NE31 only



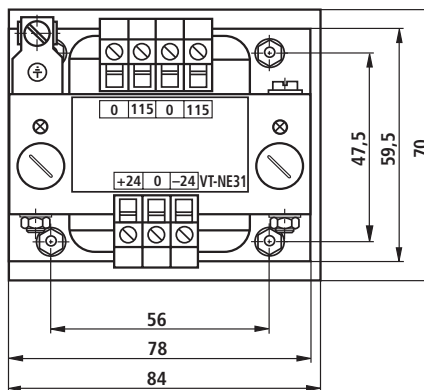
Top view VT-NE30



Top view VT-NE32



Top view VT-NE31



Notes

© This document, as well as the data, specifications and other information set forth in it, are the exclusive property of Bosch Rexroth AG. It may not be reproduced or given to third parties without its consent. The data specified above only serve to describe the product. No statements concerning a certain condition or suitability for a certain application can be derived from our information. The information given does not release the user from the obligation of own judgment and verification. It must be remembered that our products are subject to a natural process of wear and aging.