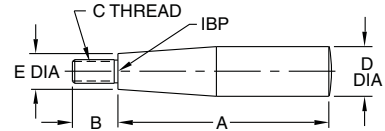


## SOLID HANDLES

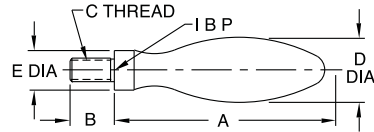
STEEL: 12L14, BLACK OXIDE FINISH. STAINLESS STEEL: 300 SERIES.



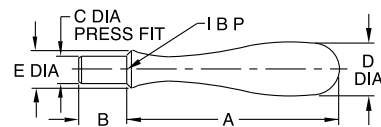
**Square Design Threaded Stainless Steel**



**Rounded Design Threaded Stainless Steel**



**Rounded Design Press Fit Steel, Black Oxide Finish**



### SQUARE DESIGN, THREADED — STAINLESS (USA)

PART NO.	SIZE	A	B	C	D DIA	E DIA
CL-100-SH-S	1	1-1/2	9/32	1/4-20	1/2	13/32
CL-200-SH-S	2	2	7/16			
CL-300-SH-S	3	2-1/2	9/16	5/16-18	5/8	15/32
CL-400-SH-S	4	3-1/4	11/16	3/8-16	3/4	19/32

### ROUNDED DESIGN, THREADED — STAINLESS (USA)

CL-250-SH-S	2	2	1/2	1/4-20	5/8	.44
CL-350-SH-S	3	2-5/8	9/16	5/16-18	13/16	.53
CL-450-SH-S	4	3-3/16	11/16	3/8-16	1	.63
CL-550-SH-S	5	3-3/4	13/16	1/2-13	1-1/4	.75

### ROUNDED DESIGN, PRESS FIT — STEEL (USA)

CL-1-SH	2	2	9/16	3/8	11/16	5/8
CL-2-SH	4	3-1/4	3/4	7/16	1	11/16
CL-3-SH	5	3-7/8	1	1/2	1-3/16	7/8

Attractive fixed handles available in steel with a black oxide finish, or stainless steel with a polished finish. Available in square or rounded designs, each in several sizes. Choice of threaded type or press-fit type (do not use press-fit handles on aluminum hand wheels).

### SQUARE DESIGN, THREADED — STAINLESS (METRIC)

PART NO.	SIZE	A	B	C	D DIA	E DIA
CLM-100-SH-S	1	1-1/2	9/32	M6	1/2	13/32
CLM-200-SH-S	2	2	7/16			
CLM-300-SH-S	3	2-1/2	9/16	M8	5/8	15/32
CLM-400-SH-S	4	3-1/4	11/16	M10	3/4	19/32

### ROUNDED DESIGN, THREADED — STAINLESS (METRIC)

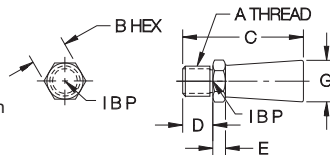
CLM-250-SH-S	2	2	1/2	M6	5/8	.44
CLM-350-SH-S	3	2-5/8	9/16	M8	13/16	.53
CLM-450-SH-S	4	3-3/16	11/16	M10	1	.63
CLM-550-SH-S	5	3-3/4	13/16	M12	1-1/4	.75

## FINGER PINS

12L14 STEEL, BLACK OXIDE FINISH



Miniature, fixed finger handle in steel, with a black oxide finish.



### USA

PART NO.	A	B	C	D	E	G DIA
CL-0-FP	#10-32	1/4	3/4	1/4	7/64	1/4
CL-1-FP	#10-24					
CL-2-FP	5/16-18	3/8	1-1/4	5/16	5/32	3/8

### METRIC

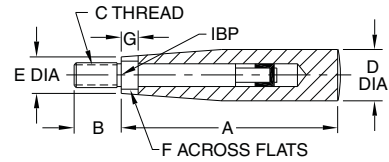
CLM-5-FP	M5	6mm	.75	.24	.12	.24
CLM-8-FP	M8	10mm	1.26	.31	.16	.39

## REVOLVING HANDLES

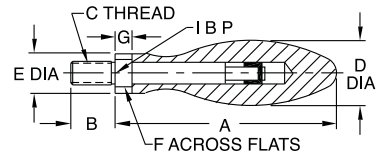
STEEL: 12L14, BLACK OXIDE FINISH. STAINLESS STEEL: 300 SERIES



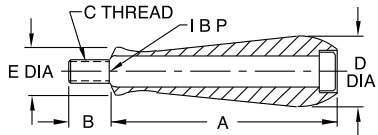
**Square Design  
Threaded  
Stainless Steel**



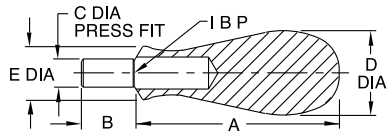
**Rounded Design  
Threaded  
Stainless Steel**



**Rounded Design  
Shoulder Screw  
Steel, Black Oxide Finish**



**Rounded Design  
Press Fit  
Steel, Black Oxide Finish**



Revolving Handles have an internal bearing that allows the handle to remain fixed in your hand, for firm gripping, while turning a hand wheel or crank. These attractive handles are available in steel with a black oxide finish, or stainless steel with a polished finish. Available in square or rounded designs, each in several sizes. Choice of threaded type or press-fit type (do not use press-fit handles on aluminum hand wheels).

### SQUARE DESIGN, THREADED — STAINLESS (USA)

PART NO.	SIZE	A	B	C	D DIA	E DIA	F	G
CL-100-RH-S	1	1-1/2	9/32	1/4-20	5/8	15/32	5/16	.20
CL-200-RH-S	2	2	1/2			7/16		.25
CL-300-RH-S	3	2-1/2	9/16	5/16-18	3/4	17/32	3/8	.28
CL-400-RH-S	4	3-1/4	5/8	3/8-16	7/8	5/8	7/16	.32

### ROUNDED DESIGN, THREADED — STAINLESS (USA)

CL-250-RH-S	2	2-1/4	1/2	1/4-20	5/8	.44	5/16	.25
CL-350-RH-S	3	2-13/16	9/16	5/16-18	13/16	.53	3/8	.28
CL-450-RH-S	4	3-3/8	5/8	3/8-16	1	.63	7/16	.32
CL-550-RH-S	5	4	3/4	1/2-13	1-1/4	.75	5/8	.39

### ROUNDED DESIGN, SHOULDER SCREW — STEEL (USA)

CL-1-RH	2	2	7/16	1/4-20	13/16	3/4	—	—
CL-2-RH	4	3-1/4	9/16	3/8-16	1-1/4	15/16	—	—
CL-3-RH	5	3-7/8	3/4	1/2-13	1-1/2	1-1/8	—	—

### ROUNDED DESIGN, PRESS FIT — STEEL (USA)

CL-4-RH	2	2-3/8	19/32	5/16	1	5/8	—	—
---------	---	-------	-------	------	---	-----	---	---

### SQUARE DESIGN, THREADED — STAINLESS (METRIC)

PART NO.	SIZE	A	B	C	D DIA	E DIA	F	G
CLM-100-RH-S	1	1-1/2	9/32	M6	5/8	15/32	5/16	.20
CLM-200-RH-S	2	2	1/2			7/16		.25
CLM-300-RH-S	3	2-1/2	9/16	M8	3/4	17/32	3/8	.28
CLM-400-RH-S	4	3-1/4	5/8	M10	7/8	5/8	7/16	.32

### ROUNDED DESIGN, THREADED — STAINLESS (METRIC)

CLM-250-RH-S	2	2-1/4	1/2	M6	5/8	.44	5/16	.25
CLM-350-RH-S	3	2-13/16	9/16	M8	13/16	.53	3/8	.28
CLM-450-RH-S	4	3-3/8	11/16	M10	1	.63	7/16	.32
CLM-550-RH-S	5	4	13/16	M12	1-1/4	.75	5/8	.39

### ROUNDED DESIGN, SHOULDER SCREW — STEEL (METRIC)

CLM-1-RH	2	2	7/16	M6	13/16	3/4	—	—
CLM-2-RH	4	3-1/4	9/16	M10	1-1/4	15/16	—	—
CLM-3-RH	5	3-7/8	3/4	M12	1-1/2	1-1/8	—	—