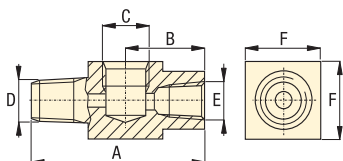
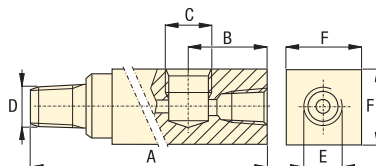


Dimensions & options G, GA, GS, NV, FM, V-series

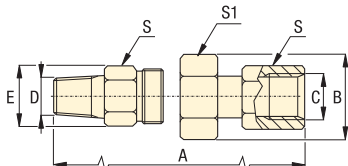
GA-1



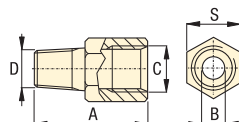
GA-2, -3, -4



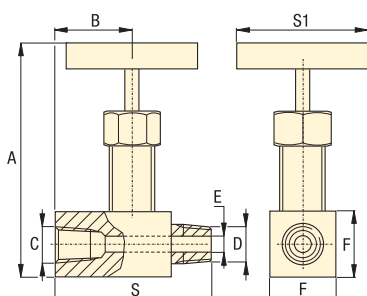
GA-918



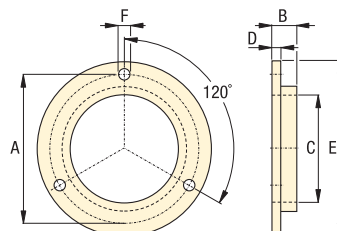
GS-2, -3



NV-251, V-91



FM-25NG



Product dimensions in mm [± 0.1]

Gauge port NPTF	Max. pressure bar	Model number	Dimensions							
			A	B	C	D	E	F	S	S1
▼ Gauge adaptors										
1/2"	700	GA-1	71	31	1/2"NPTF	3/8"NPTF	3/8"NPTF	32	-	-
1/2"	700	GA-2	155	35	1/2"NPTF	3/8"NPTF	3/8"NPTF	32	-	-
1/4"	700	GA-3	133	35	1/4"NPTF	3/8"NPTF	3/8"NPTF	32	-	-
1/2"	700	GA-4	111	35	1/2"NPTF	1/4"NPTF	3/8"NPTF	32	-	-
▼ Swivel gauge adaptor										
1/2"	700	GA-918	57	44	1/2"NPTF	1/2"NPTF	33	-	29	38
▼ Gauge shut-off valves										
1/4"	700	NV-251	57	29	1/4"NPTF	1/4"NPTF	4,3	19	57	63
1/2"	700	V-91	89	32	1/2"NPTF	1/2"NPTF	4,8	37	64	63
▼ Gauge snubber valves										
1/4"	350	GS-2	41	0,5	1/4"NPTF	SAE #4	-	-	19	-
1/4"	350	GS-3	41	0,5	1/4"NPTF	G 1/4"	-	-	19	-
▼ Flange mounting for panel mounting of G-series gauges										
-	-	FM-25NG	75	4,3	64	1,8	85	3,5	-	-

Pressure: 0 - 700 bar

Accuracy: 1,5% /full scale

Gauge face: \varnothing 63 mm

E Manómetros

F Manomètres

D Manometer



Options

Hoses and couplers

192 ▶



Digital gauges

189 ▶



Pressure switches

188 ▶



V-10 Auto Damper® valve

157 ▶



Important

Do not exceed maximum pressure.

Gauge snubbers or needle valves are recommended for high cycle applications.

Do not keep gauges under permanent pressure. The use of shut-off valves is recommended.

ENERPAC 191