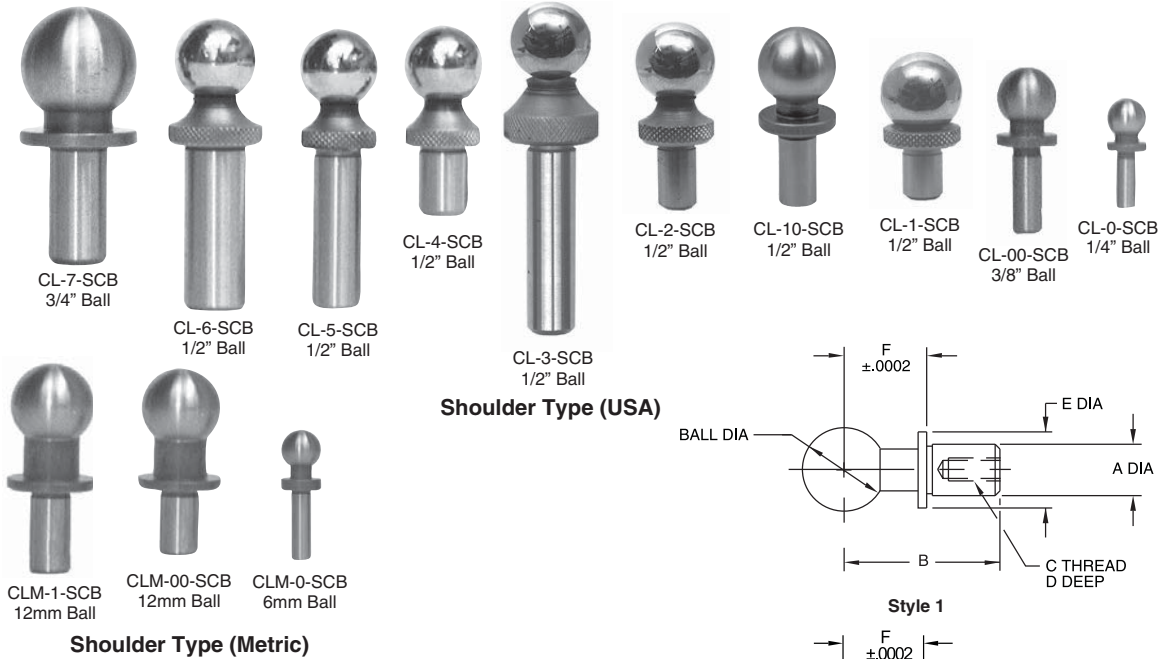
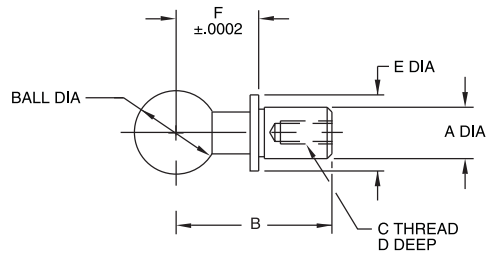


CONSTRUCTION BALLS

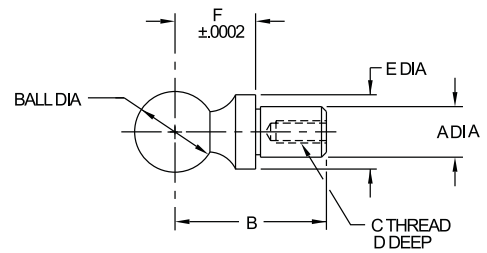
1144 STEEL, HEAT TREATED RC 54-56



Shoulder Type (USA)



Style 1



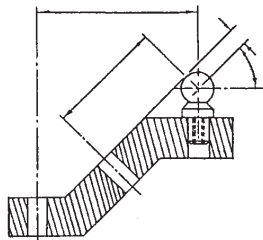
Style 2

Precision tooling ball used as a reference point for critical inspection, layout, and machining operations. Shoulder type has a precision height-reference shoulder to locate the ball in three dimensions. Concentricity between ball and shank is .0002" TIR. Available with ball diameters from 1/4 to 3/4" (6 to 12mm in metric), in various shank diameters and lengths. Note: Catalog photos are actual size.

Shoulder Type (Metric)

SHOULDER TYPE (USA)

PART NO.	BALL DIA		A DIA		B	C	D	E DIA	F	STYLE
	NOMINAL	ACTUAL	NOMINAL	ACTUAL						
CL-0-SCB	1/4	.2502/.2498	1/8	.1250/.1246	.56	—	—	.25	.2000	1
CL-00-SCB	3/8	.3752/.3748	3/16	.1875/.1871	.75	—	—	.37	.3000	
CL-1-SCB	1/2	.5000/.4997	1/4	.2500/.2497	.63	#6-32	1/4	.46	.3125	2
CL-10-SCB		.5002/.4998		.2500/.2496	.94	—	—		.4000	
CL-2-SCB		.2500/.2497		.94	#6-32	5/16	.5000		2	
CL-3-SCB		.5000/.4997		5/16	.3125/.3122	.94	#6-32			5/16
CL-4-SCB	1.50		—		—	.56	.5000			
CL-5-SCB	1.50		—		—	.56	.5000			
CL-6-SCB	1.50		—		—	.75	.5000			
CL-7-SCB	3/4	.7502/.7498	3/8	.3750/.3746	1.25	—	—	.75	.5000	1



Shoulder-Type Construction Balls provide a reference point in three dimensions.

SHOULDER TYPE (METRIC)

CLM-0-SCB	6mm	.2364/.2360	3mm	.1181/.1177	.47	—	—	.24	.2362 (6mm)	1
CLM-00-SCB	12mm	.4726/.4722	6mm	.2362/.2358	.87	—	—	.47	.4724 (12mm)	
CLM-1-SCB					.98	M3.5	.24			

CONSTRUCTION BALLS

1144 STEEL, HEAT TREATED RC 54-56



CL-5-CB
1/2" Ball



CL-3-CB
1/2" Ball



CL-1-CB
1/2" Ball

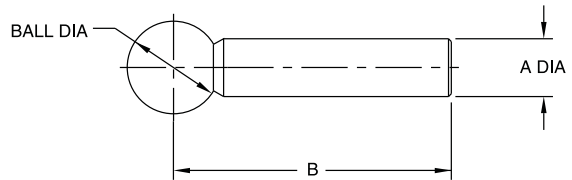


CL-00-CB
3/8" Ball



CL-0-CB
1/4" Ball

Adjustable Type



Precision tooling ball used as a reference point for critical inspection, layout, and machining operations. Adjustable type has no shoulder, so it can be set at any desired height then locked with a set screw. Concentricity between ball and shank is .0002" TIR. Available with ball diameters from 1/4 to 1/2", in various shank diameters and lengths. Note: Catalog photos are actual size.

ADJUSTABLE TYPE (USA)

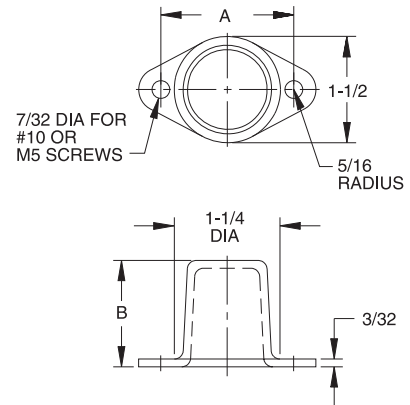
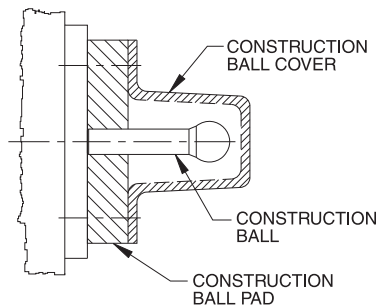
PART NO.	BALL DIA		A DIA		B
	NOMINAL	ACTUAL	NOMINAL	ACTUAL	
CL-0-CB	1/4	.2502/.2498	1/8	.1250/.1246	.56
CL-00-CB	3/8	.3752/.3748	3/16	.1875/.1871	
CL-1-CB	1/2	.5000/.4997	1/4	.2500/.2497	1.50
CL-3-CB			5/16	.3125/.3122	
CL-5-CB			3/8	.3750/.3747	

CONSTRUCTION-BALL COVERS

ZINC DIE CASTING



Sturdy cover that protects a Construction Ball from damage after installation.



PART NO.	A	B
CL-2-COVER	1-7/8	1-1/2

CONSTRUCTION-BALL PADS

RECTANGULAR: 1018 STEEL, BLACK OXIDE FINISH

ROUND: 1144 STEEL, BLACK OXIDE FINISH

SHANK TYPE: 8620 STEEL, CARBURIZED-HARDENED, BLACK OXIDE FINISH



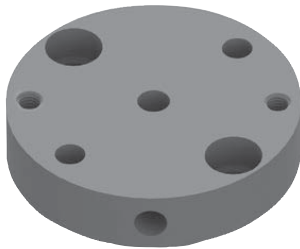
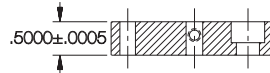
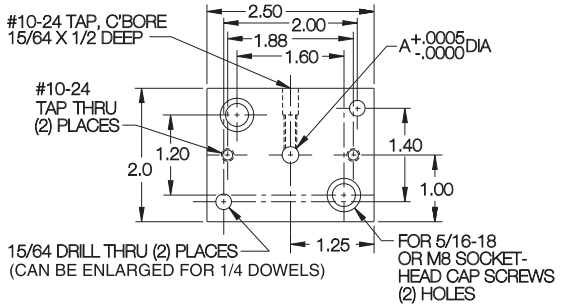
ADDITIONAL SIZES!

Rectangular

Rectangular Construction-Ball Pads should be fastened with two socket-head cap screws, then can be doweled in place to maintain accurate location. The Construction Ball can be secured by installing a #10-24 set screw (not furnished) in the crosshole.

RECTANGULAR (USA)

PART NO.	A DIA	
	NOMINAL	ACTUAL
CL-1-CBP	1/4	.2500
CL-2-CBP	5/16	.3125
CL-3-CBP	3/8	.3750



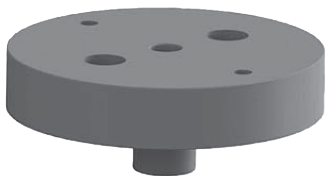
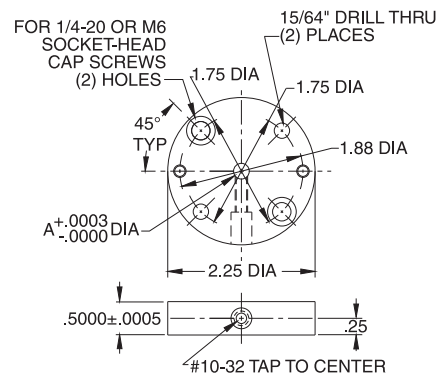
NEW!

Round

Round Construction-Ball Pads should be fastened with two socket-head cap screws, then can be doweled in place to maintain accurate location. The Construction Ball can be secured by installing a #10-32 set screw (not furnished) in the crosshole.

ROUND (USA)

PART NO.	A DIA	
	NOMINAL	ACTUAL
CL-1-CBPR	1/4	.2500



NEW!

Shank Type

Shank-type Construction-Ball Pads should be installed in a reamed hole for accurate location, then fastened with two socket-head cap screws.

SHANK TYPE (USA)

PART NO.	A DIA		B DIA	C DIA	D	E
	NOMINAL	ACTUAL				
CL-1-CBPK	1/4	.2500	.257	2.50	1.88	#10-24

