

BODIES FOR SWIVEL SCREWS

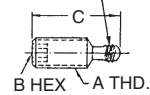
STEEL: 12L14 OR 1144, HEAT TREATED, ZINC PLATED YELLOW CHROMATE OR BLACK OXIDE FINISH
STAINLESS STEEL: 300-SERIES



Socket Head

Swivel-screw bodies that accept any of the feet shown on the opposite page. Socket-head version allows applying strong clamping force using a hex wrench. Patented.

D LEFT HAND THD.



SOCKET HEAD (USA)

PART NO. STEEL	PART NO. STEEL	PART NO. STEEL	A	B	C	D
ZINC PLATED	BLACK OXIDE	STAINLESS				
CL-1-BSS	CL-1-BSS-BO	—	1/4-20	1/8	15/32	#8-36 L.H.
CL-2-BSS	CL-2-BSS-BO	CL-2-BSS-S			23/32	
CL-3-BSS	CL-3-BSS-BO	CL-3-BSS-S			31/32	
CL-4-BSS	CL-4-BSS-BO	CL-4-BSS-S	5/16-18	5/32	1-15/32	#12-28 L.H.
CL-5-BSS	CL-5-BSS-BO	—			23/32	
CL-6-BSS	CL-6-BSS-BO	CL-6-BSS-S			31/32	
CL-7-BSS	CL-7-BSS-BO	CL-7-BSS-S	3/8-16	3/16	1-15/32	1/4-28 L.H.
CL-8-BSS	CL-8-BSS-BO	CL-8-BSS-S			1-31/32	
CL-9-BSS	CL-9-BSS-BO	—			11/16	
CL-10-BSS	CL-10-BSS-BO	—	1/2-13	1/4	15/16	5/16-24 L.H.
CL-11-BSS	CL-11-BSS-BO	CL-11-BSS-S			1-7/16	
CL-12-BSS	CL-12-BSS-BO	CL-12-BSS-S			1-15/16	
CL-13-BSS	CL-13-BSS-BO	CL-13-BSS-S	5/8-11	5/16	2-15/16	7/16-20 L.H.
CL-15-BSS	CL-15-BSS-BO	—			3-15/16	
CL-16-BSS	CL-16-BSS-BO	CL-16-BSS-S			1-15/16	
CL-17-BSS	CL-17-BSS-BO	CL-17-BSS-S	5/8-11	5/16	2-15/16	7/16-20 L.H.
CL-18-BSS	CL-18-BSS-BO	CL-18-BSS-S			3-15/16	
CL-20-BSS	CL-20-BSS-BO	—			4-15/16	
CL-21-BSS	CL-21-BSS-BO	—	5/8-11	5/16	2-15/16	7/16-20 L.H.
CL-22-BSS	CL-22-BSS-BO	—			3-15/16	
CL-23-BSS	CL-23-BSS-BO	—			4-15/16	

SOCKET HEAD (METRIC)

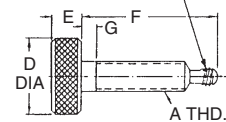
PART NO. STEEL	A	B	C	D
BLACK OXIDE				
CLM-1-BSS-BO	M6	3mm	.56	#8-36 L.H.
CLM-2-BSS-BO			.76	
CLM-3-BSS-BO			.95	
CLM-4-BSS-BO	M8	4mm	1.54	#12-28 L.H.
CLM-5-BSS-BO			.74	
CLM-6-BSS-BO			.94	
CLM-7-BSS-BO	M10	5mm	1.53	1/4-28 L.H.
CLM-8-BSS-BO			1.92	
CLM-9-BSS-BO			.73	
CLM-10-BSS-BO	M12	6mm	.93	5/16-24 L.H.
CLM-11-BSS-BO			1.52	
CLM-12-BSS-BO			1.92	
CLM-13-BSS-BO	M16	8mm	2.90	7/16-20 L.H.
CLM-15-BSS-BO			1.52	
CLM-16-BSS-BO			1.91	
CLM-17-BSS-BO	M16	8mm	2.89	7/16-20 L.H.
CLM-18-BSS-BO			3.88	
CLM-20-BSS-BO			1.89	
CLM-21-BSS-BO	M16	8mm	2.87	7/16-20 L.H.
CLM-22-BSS-BO			3.86	
CLM-23-BSS-BO			4.85	



Knurled Head

Similar to the above screws, except with a knurled head for finger tightening.

H LEFT HAND THD.



KNURLED HEAD (USA)

PART NO. STEEL	PART NO. STEEL	STAINLESS STEEL	A	D DIA	E	F	G	H
ZINC PLATED	BLACK OXIDE	PART NO.						
CL-24-BSS	CL-24-BSS-BO	CL-24-BSS-S	1/4-20	1	5/16	31/32	1/8	#8-36 L.H.
CL-25-BSS	CL-25-BSS-BO	CL-25-BSS-S				1-15/32		
CL-26-BSS	CL-26-BSS-BO	CL-26-BSS-S				1-31/32		
CL-27-BSS	CL-27-BSS-BO	CL-27-BSS-S	5/16-18	1-1/8	3/8	2-31/32	3/16	#12-28 L.H.
CL-28-BSS	CL-28-BSS-BO	—				31/32		
CL-29-BSS	CL-29-BSS-BO	CL-29-BSS-S				1-15/32		
CL-30-BSS	CL-30-BSS-BO	CL-30-BSS-S	3/8-16	1-1/4	7/16	1-31/32	3/16	1/4-28 L.H.
CL-31-BSS	CL-31-BSS-BO	CL-31-BSS-S				2-31/32		
CL-33-BSS	CL-33-BSS-BO	—				1-7/16		
CL-34-BSS	CL-34-BSS-BO	CL-34-BSS-S	1/2-13	1-1/4	1/2	1-15/16	3/16	5/16-24 L.H.
CL-35-BSS	CL-35-BSS-BO	CL-35-BSS-S				2-15/16		
CL-36-BSS	CL-36-BSS-BO	CL-36-BSS-S				3-15/16		
CL-38-BSS	CL-38-BSS-BO	—	5/8-11	1-1/4	1/2	1-7/16	3/16	7/16-20 L.H.
CL-39-BSS	CL-39-BSS-BO	—				1-15/16		
CL-40-BSS	CL-40-BSS-BO	CL-40-BSS-S				2-15/16		
CL-41-BSS	CL-41-BSS-BO	CL-41-BSS-S	5/8-11	1-1/4	1/2	3-15/16	3/16	7/16-20 L.H.
CL-43-BSS	CL-43-BSS-BO	—				1-15/16		
CL-44-BSS	CL-44-BSS-BO	—				2-15/16		
CL-45-BSS	CL-45-BSS-BO	—	5/8-11	1-1/4	1/2	3-15/16	3/16	7/16-20 L.H.
CL-46-BSS	CL-46-BSS-BO	—				4-15/16		

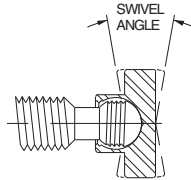
KNURLED HEAD (METRIC)

PART NO. STEEL	A	D DIA	E	F	G	H
BLACK OXIDE						
CLM-24-BSS-BO	M6	1	5/16	.95	1/8	#8-36 L.H.
CLM-25-BSS-BO				1.54		
CLM-26-BSS-BO				1.94		
CLM-27-BSS-BO	M8	1-1/8	3/8	2.92	3/16	#12-28 L.H.
CLM-28-BSS-BO				.94		
CLM-29-BSS-BO				1.53		
CLM-30-BSS-BO	M10	1-1/4	7/16	1.92	3/16	1/4-28 L.H.
CLM-31-BSS-BO				2.91		
CLM-33-BSS-BO				1.52		
CLM-34-BSS-BO	M12	1-1/4	1/2	1.92	3/16	5/16-24 L.H.
CLM-35-BSS-BO				2.90		
CLM-36-BSS-BO				3.88		
CLM-38-BSS-BO	M16	1-1/4	1/2	1.52	3/16	7/16-20 L.H.
CLM-39-BSS-BO				1.91		
CLM-40-BSS-BO				2.89		
CLM-41-BSS-BO	M16	1-1/4	1/2	3.88	3/16	7/16-20 L.H.
CLM-43-BSS-BO				1.89		
CLM-44-BSS-BO				2.88		
CLM-45-BSS-BO	M16	1-1/4	1/2	3.86	3/16	7/16-20 L.H.
CLM-46-BSS-BO				4.85		

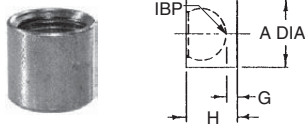
FEET FOR SWIVEL SCREWS

STEEL: (TYPES A, B, D, E), 12L14 STEEL, ZINC PLATED YELLOW CHROMATE (BLACK OXIDE OPTIONAL)
STEEL (TYPE C): 1018 STEEL, CARBURIZED HARDENED, ZINC PLATED YELLOW CHROMATE (BLACK OXIDE OPTIONAL)
STAINLESS: 300-SERIES STAINLESS STEEL
DELRIN®: WHITE DELRIN® 500

Matching feet for the swivel-screw bodies on the opposite page. Types A, B, C, and D can be used with any body-thread size. Type E can be used with the largest two sizes.

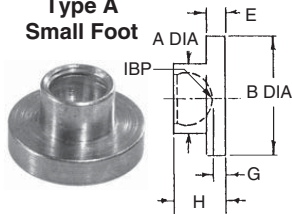


Ball and foot are threaded to allow easy installation and removal, a *lefthand* thread to positively prevent backout when turning the screw counterclockwise. Once the threads clear during installation, the foot rotates and pivots freely (20° included angle).
Note: Delrin® feet are not threaded — they snap on and off.



**Type A
Small Foot**

PART NO. STEEL ZINC PLATED	PART NO. STEEL BLACK OXIDE	PART NO. STAINLESS STEEL	PART NO. DELRIN®	FITS BODY THREAD SIZE	A DIA	H	G
CL-1A-FSS	CL-1A-FSS-BO	CL-1A-FSS-S	CL-1A-FSSN	1/4-20 and M6	.187	.200	.031
CL-2A-FSS	CL-2A-FSS-BO	CL-2A-FSS-S	CL-2A-FSSN	5/16-18 and M8	.250	.255	.046
CL-3A-FSS	CL-3A-FSS-BO	CL-3A-FSS-S	CL-3A-FSSN	3/8-16 and M10	.298	.315	.053
CL-4A-FSS	CL-4A-FSS-BO	CL-4A-FSS-S	CL-4A-FSSN	1/2-13 and M12	.390	.359	.058
CL-5A-FSS	CL-5A-FSS-BO	CL-5A-FSS-S	CL-5A-FSSN	5/8-11 and M16	.500	.470	.076

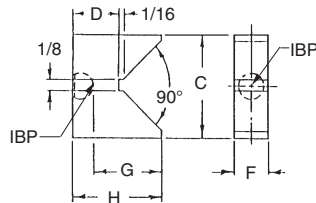


**Type B
Large Foot**

PART NO. STEEL ZINC PLATED	PART NO. STEEL BLACK OXIDE	PART NO. STAINLESS STEEL	PART NO. DELRIN®	FITS BODY THREAD SIZE	A DIA	B DIA	E	G	H
CL-1B-FSS	CL-1B-FSS-BO	CL-1B-FSS-S	CL-1B-FSSN	1/4-20 and M6	.187	.375	.125	.131	.300
CL-2B-FSS	CL-2B-FSS-BO	CL-2B-FSS-S	CL-2B-FSSN	5/16-18 and M8	.250	.500	.156	.141	.350
CL-3B-FSS	CL-3B-FSS-BO	CL-3B-FSS-S	CL-3B-FSSN	3/8-16 and M10	.298	.562	.187	.177	.437
CL-4B-FSS	CL-4B-FSS-BO	CL-4B-FSS-S	CL-4B-FSSN	1/2-13 and M12	.390	.750	.187	.119	.420
CL-5B-FSS	CL-5B-FSS-BO	CL-5B-FSS-S	CL-5B-FSSN	5/8-11 and M16	.500	.930	.218	.121	.515



**Type C
Vee Foot**

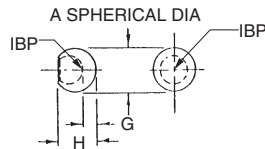


TYPE C — VEE FOOT

PART NO. STEEL ZINC PLATED	PART NO. STEEL BLACK OXIDE	FITS BODY THREAD SIZE	C	D	F	G	H
CL-1C-FSS	CL-1C-FSS-BO	1/4-20 and M6	1.0	.50	.312	.706	.875
CL-2C-FSS	CL-2C-FSS-BO	5/16-18 and M8	1.0	.562	.375	.729	.938
CL-3C-FSS	CL-3C-FSS-BO	3/8-16 and M10	1.0	.625	.438	.739	1.000
CL-4C-FSS	CL-4C-FSS-BO	1/2-13 and M12	2.0	.688	.500	1.199	1.500
CL-5C-FSS	CL-5C-FSS-BO	5/8-11 and M16	2.0	.750	.625	1.231	1.625



**Type D
Ball Foot**

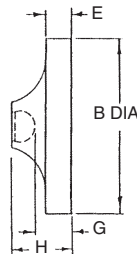


TYPE D — BALL FOOT

PART NO. STEEL ZINC PLATED	PART NO. STEEL BLACK OXIDE	FITS BODY THREAD SIZE	A DIA	G	H
CL-1D-FSS	CL-1D-FSS-BO	1/4-20 and M6	.250	.051	.220
CL-2D-FSS	CL-2D-FSS-BO	5/16-18 and M8	.312	.071	.280
CL-3D-FSS	CL-3D-FSS-BO	3/8-16 and M10	.375	.064	.325
CL-4D-FSS	CL-4D-FSS-BO	1/2-13 and M12	.500	.144	.443
CL-5D-FSS	CL-5D-FSS-BO	5/8-11 and M16	.620	.137	.531



**Type E
Extra-Large Foot**



TYPE E — EXTRA-LARGE FOOT

PART NO. STEEL ZINC PLATED	PART NO. STEEL BLACK OXIDE	FITS BODY THREAD SIZE	B DIA	E	G	H
CL-4E-FSS	CL-4E-FSS-BO	1/2-13 and M12	1.50	1/4	.26	.56
CL-5E-FSS	CL-5E-FSS-BO	5/8-11 and M16	2.00	5/16	.31	.70

SWIVEL SCREW CLAMPS

BODY: 12L14 OR 1144 STEEL, HEAT TREATED, ZINC PLATED YELLOW CHROMATE (OR 300-SERIES STAINLESS STEEL)
FOOT: 12L14 STEEL, ZINC PLATED YELLOW CHROMATE (OR 300-SERIES STAINLESS STEEL, OR DELRIN®)

Socket-head swivel-screw assemblies that combine the bodies on page 102 with the feet on page 103. The steel version is optionally available with black oxide finish by adding "-BO" to the part number (example: CL-2-SSC-BO). Type A and B feet are optionally available in Delrin® by adding "N" to the part number (examples: CL-2-SSCN, CL-2-SSC-BON, CL-2-SSC-SN).



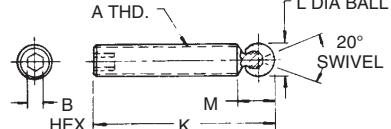
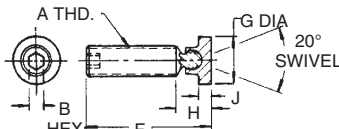
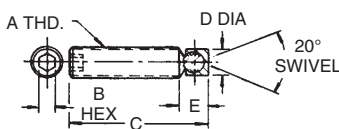
Type A: Small Foot



Type B: Large Foot



Type D: Ball Foot



USA

TYPE A STEEL PART NO.*	TYPE A STAINLESS PART NO.	TYPE B STEEL PART NO.*	TYPE B STAINLESS PART NO.	TYPE D STEEL PART NO.*	A	B	C	D DIA	E	F	G DIA	H	J	K	L DIA	M					
CL-1-SSC	—	CL-20-SSC	—	CL-47-SSC	1/4-20	1/8	1/2	3/16	9/32	19/32	3/8	23/64	1/8	17/32	1/4	5/16					
CL-2-SSC	CL-2-SSC-S	CL-21-SSC	CL-21-SSC-S	CL-48-SSC			3/4			27/32				25/32							
CL-3-SSC	CL-3-SSC-S	CL-22-SSC	CL-22-SSC-S	CL-49-SSC			1			1-3/32				1-1/32							
CL-4-SSC	CL-4-SSC-S	CL-23-SSC	CL-23-SSC-S	CL-50-SSC	5/16-18	5/32	1-1/2	1/4	11/32	1-19/32	1/2	27/64	5/32	1-17/32	5/16	23/64					
CL-5-SSC	—	CL-24-SSC	—	CL-51-SSC			3/4			27/32				25/32							
CL-6-SSC	CL-6-SSC-S	CL-25-SSC	CL-25-SSC-S	CL-52-SSC			1			1-3/32				1-1/32							
CL-7-SSC	CL-7-SSC-S	CL-26-SSC	CL-26-SSC-S	CL-53-SSC	CL-8-SSC	CL-8-SSC-S	1-1/2	CL-27-SSC	CL-27-SSC-S	1-19/32	CL-54-SSC	CL-54-SSC	2-3/32	2-1/32	CL-9-SSC	—	CL-28-SSC	—	CL-55-SSC	—	25/32
CL-10-SSC	—	CL-29-SSC	—	CL-56-SSC			3/4			7/8			25/32								
CL-11-SSC	CL-11-SSC-S	CL-30-SSC	CL-30-SSC-S	CL-57-SSC			1			1-1/8			1-1/32								
CL-12-SSC	CL-12-SSC-S	CL-31-SSC	CL-31-SSC-S	CL-58-SSC	3/8-16	3/16	1-1/2	19/64	3/8	1-5/8	9/16	5/8	3/16	1-17/32	3/8	7/16					
CL-39-SSC	CL-39-SSC-S	CL-43-SSC	CL-43-SSC-S	CL-59-SSC			2			2-1/8				2-1/32							
CL-14-SSC	—	CL-33-SSC	—	CL-61-SSC			3			3-1/8				3-1/32							
CL-15-SSC	CL-15-SSC-S	CL-34-SSC	CL-34-SSC-S	CL-62-SSC	1/2-13	1/4	1-1/2	13/32	15/32	1-9/16	3/4	17/32	3/16	1-19/32	1/2	9/16					
CL-16-SSC	CL-16-SSC-S	CL-35-SSC	CL-35-SSC-S	CL-63-SSC			2			2-1/16				2-3/32							
CL-40-SSC	CL-40-SSC-S	CL-44-SSC	CL-44-SSC-S	CL-64-SSC			3			3-1/16				3-3/32							
CL-18-SSC	—	CL-37-SSC	—	CL-66-SSC	CL-18-SSC	—	4	5/8	1/2	4-1/16	15/16	21/32	7/32	4-3/32	5/8	11/16					
CL-19-SSC	—	CL-38-SSC	—	CL-67-SSC			2			2-3/64				2-7/32							
CL-41-SSC	—	CL-45-SSC	—	CL-68-SSC			3			3-3/64				3-7/32							
CL-42-SSC	—	CL-46-SSC	—	CL-69-SSC	4	4-3/64	4-7/32														
					5	5-3/64	5-7/32														

METRIC

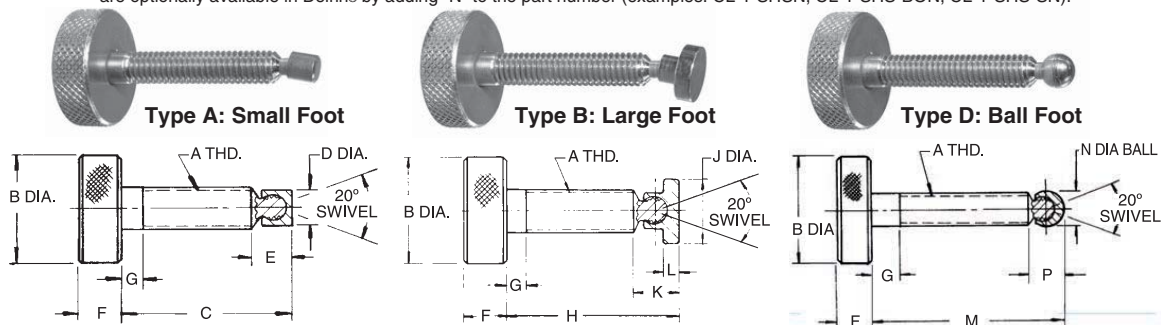
CLM-1-SSC-BO	—	CLM-20A-SSC-BO	—	CLM-47-SSC-BO	A	B	C	D DIA	E	F	G DIA	H	J	K	L DIA	M
CLM-2-SSC-BO	—	CLM-21A-SSC-BO	—	CLM-48-SSC-BO	M6	3mm	.59	3/16	9/32	.69	3/8	23/64	1/8	.64	1/4	5/16
CLM-3-SSC-BO	—	CLM-22-SSC-BO	—	CLM-49-SSC-BO			.79			.89				1.08		
CLM-4-SSC-BO	—	CLM-23-SSC-BO	—	CLM-50-SSC-BO			.98			1.08				1.62		
CLM-5-SSC-BO	—	CLM-24-SSC-BO	—	CLM-51-SSC-BO	M8	4mm	.79	1/4	11/32	.88	1/2	27/64	5/32	.85	5/16	23/64
CLM-6-SSC-BO	—	CLM-25-SSC-BO	—	CLM-52-SSC-BO			.98			1.08				1.64		
CLM-7-SSC-BO	—	CLM-26-SSC-BO	—	CLM-53-SSC-BO			1.57			1.67				2.03		
CLM-8-SSC-BO	—	CLM-27-SSC-BO	—	CLM-54-SSC-BO	1.97	2.06	2.33									
CLM-9-SSC-BO	—	CLM-28-SSC-BO	—	CLM-55-SSC-BO	.79	.91	.82									
CLM-10-SSC-BO	—	CLM-29-SSC-BO	—	CLM-56-SSC-BO	.98	1.11	1.02									
CLM-11-SSC-BO	—	CLM-30-SSC-BO	—	CLM-57-SSC-BO	M10	5mm	1.57	19/64	3/8	1.70	9/16	5/8	3/16	1.61	3/8	7/16
CLM-12-SSC-BO	—	CLM-31-SSC-BO	—	CLM-58-SSC-BO			1.97			2.10				2.01		
CLM-13-SSC-BO	—	CLM-32-SSC-BO	—	CLM-59-SSC-BO			2.95			3.08				2.99		
CLM-14-SSC-BO	—	CLM-33-SSC-BO	—	CLM-61-SSC-BO	M12	6mm	1.57	13/32	15/32	1.64	3/4	17/32	3/16	1.69	1/2	9/16
CLM-15-SSC-BO	—	CLM-34-SSC-BO	—	CLM-62-SSC-BO			1.97			2.03				2.08		
CLM-16-SSC-BO	—	CLM-35-SSC-BO	—	CLM-63-SSC-BO			2.95			3.01				3.06		
CLM-17-SSC-BO	—	CLM-36-SSC-BO	—	CLM-64-SSC-BO	3.94	4.00	4.05									
CLM-18-SSC-BO	—	CLM-37-SSC-BO	—	CLM-66-SSC-BO	M16	8mm	1.97	1/2	5/8	2.01	15/16	21/32	7/32	2.06	5/8	11/16
CLM-19-SSC-BO	—	CLM-38-SSC-BO	—	CLM-67-SSC-BO			2.95			2.99				3.04		
CLM-20-SSC-BO	—	CLM-39-SSC-BO	—	CLM-68-SSC-BO			3.94			3.98				4.03		
CLM-21-SSC-BO	—	CLM-40-SSC-BO	—	CLM-69-SSC-BO	4.92	4.97	5.02									

* USA sizes are available zinc plated or with black oxide finish. Metric sizes are available only with black oxide finish (-BO only).

SWIVEL HEAD SCREWS

BODY: 12L14 STEEL, CARBURIZED-HARDENED, ZINC PLATED YELLOW CHROMATE (OR 300-SERIES STAINLESS STEEL)
FOOT: 12L14 STEEL, ZINC PLATED YELLOW CHROMATE (OR 300-SERIES STAINLESS STEEL, OR DELRIN®)

Knurled-head swivel-screw assemblies that combine the bodies on page 102 with the feet on page 103. The steel version is optionally available with a black oxide finish by adding "-BO" to the part number (example: CL-1-SHS-BO). Type A and B feet are optionally available in Delrin® by adding "N" to the part number (examples: CL-1-SHSN, CL-1-SHS-BON, CL-1-SHS-SN).



USA

TYPE A STEEL PART NO.*	TYPE A STAINLESS PART NO.	TYPE B STEEL PART NO.*	TYPE B STAINLESS PART NO.	TYPE D STEEL PART NO.*	A	B DIA	C	D DIA	E	F	G	H	J DIA	K	L	M	N	P
CL-1-SHS	CL-1-SHS-S	CL-17-SHS	CL-17-SHS-S	CL-47-SHS	1/4-20	1	1	3/16	9/32	5/16	1/8	1-3/32	3/8	23/64	1/8	1-1/32	1/4	5/16
CL-2-SHS	CL-2-SHS-S	CL-18-SHS	CL-18-SHS-S	CL-48-SHS			1-1/2					1-19/32				1-17/32		
CL-3-SHS	CL-3-SHS-S	CL-19-SHS	CL-19-SHS-S	CL-49-SHS			2					2-3/32				2-1/32		
CL-33-SHS	CL-33-SHS-S	CL-40-SHS	CL-40-SHS-S	CL-50-SHS			3					3-3/32			3-1/32			
CL-4-SHS		CL-20-SHS		CL-51-SHS			1					1-3/32			1-1/64			
CL-5-SHS	CL-5-SHS-S	CL-21-SHS	CL-21-SHS-S	CL-52-SHS	5/16-18	1-1/8	1-1/2	1/4	11/32	3/8	3/16	1-19/32	1/2	27/64	5/32	1-33/64	5/16	23/64
CL-6-SHS	CL-6-SHS-S	CL-22-SHS	CL-22-SHS-S	CL-53-SHS			2					2-3/32				2-1/64		
CL-34-SHS	CL-34-SHS-S	CL-41-SHS	CL-41-SHS-S	CL-54-SHS			3					3-3/32				3-1/64		
CL-8-SHS		CL-24-SHS		CL-56-SHS			1-1/2					1-5/8			1-9/16			
CL-9-SHS	CL-9-SHS-S	CL-25-SHS	CL-25-SHS-S	CL-57-SHS	3/8-16	1-1/4	2	19/64	3/8	7/16	3/16	2-1/8	9/16	5/8	3/16	2-1/16	3/8	7/16
CL-35-SHS	CL-35-SHS-S	CL-42-SHS	CL-42-SHS-S	CL-58-SHS			3					3-1/8				3-1/16		
CL-36-SHS	CL-36-SHS-S	CL-43-SHS	CL-43-SHS-S	CL-59-SHS			4					4-1/8				4-1/16		
CL-11-SHS		CL-27-SHS		CL-61-SHS			1-1/2					1-9/16			1-19/32			
CL-12-SHS		CL-28-SHS		CL-62-SHS	1/2-13	1-1/4	2	13/32	15/32	1/2	3/16	2-1/16	3/4	17/32	3/16	2-3/32	1/2	9/16
CL-13-SHS	CL-13-SHS-S	CL-29-SHS	CL-29-SHS-S	CL-63-SHS			3					3-1/16				3-3/32		
CL-37-SHS	CL-37-SHS-S	CL-44-SHS	CL-44-SHS-S	CL-64-SHS			4					4-1/16				4-3/32		
CL-15-SHS		CL-31-SHS		CL-66-SHS			2					2-3/64			2-1/8			
CL-16-SHS		CL-32-SHS		CL-67-SHS	5/8-11	1-1/4	3	1/2	5/8	1/2	3/16	3-3/64	15/16	21/32	7/32	3-1/8	5/8	11/16
CL-38-SHS		CL-45-SHS		CL-68-SHS			4					4-3/64				4-1/8		
CL-39-SHS		CL-46-SHS		CL-69-SHS			5					5-3/64				5-1/8		

METRIC

CLM-1-SHS-BO	—	CLM-17A-SHS-BO	—	CLM-47-SHS-BO	M6	1	.98	3/16	9/32	5/16	1/8	1.08	3/8	23/64	1/8	1.03	1/4	5/16
CLM-2-SHS-BO	—	CLM-18A-SHS-BO	—	CLM-48-SHS-BO			1.57					1.67				1.62		
CLM-3-SHS-BO	—	CLM-19-SHS-BO	—	CLM-49-SHS-BO			1.97					2.07				2.02		
CLM-4-SHS-BO	—	CLM-40-SHS-BO	—	CLM-50-SHS-BO	2.95	3.05	3.00											
CLM-5-SHS-BO	—	CLM-20-SHS-BO	—	CLM-51-SHS-BO			.98					1.08			1.05			
CLM-6-SHS-BO	—	CLM-21-SHS-BO	—	CLM-52-SHS-BO	M8	1-1/8	1.57	1/4	11/32	3/8	3/16	1.67	1/2	27/64	5/32	1.64	5/16	23/64
CLM-7-SHS-BO	—	CLM-22-SHS-BO	—	CLM-53-SHS-BO			1.97					2.06				2.03		
CLM-8-SHS-BO	—	CLM-41-SHS-BO	—	CLM-54-SHS-BO			2.95					3.05				3.02		
CLM-9-SHS-BO	—	CLM-24-SHS-BO	—	CLM-56-SHS-BO			1.57					1.70			1.61			
CLM-10-SHS-BO	—	CLM-25-SHS-BO	—	CLM-57-SHS-BO	M10	1-1/4	1.97	19/64	3/8	7/16	3/16	2.10	9/16	5/8	3/16	2.01	3/8	7/16
CLM-11-SHS-BO	—	CLM-42-SHS-BO	—	CLM-58-SHS-BO			2.95					3.08				2.99		
CLM-12-SHS-BO	—	CLM-43-SHS-BO	—	CLM-59-SHS-BO			3.94					4.06				3.97		
CLM-11A-SHS-BO	—	CLM-27-SHS-BO	—	CLM-61-SHS-BO			1.57					1.64			1.69			
CLM-12A-SHS-BO	—	CLM-28-SHS-BO	—	CLM-62-SHS-BO	M12	1-1/4	1.97	13/32	15/32	1/2	3/16	2.03	3/4	17/32	3/16	2.08	1/2	9/16
CLM-13-SHS-BO	—	CLM-29-SHS-BO	—	CLM-63-SHS-BO			2.95					3.01				3.06		
CLM-14-SHS-BO	—	CLM-44-SHS-BO	—	CLM-64-SHS-BO			3.94					4.00				4.05		
CLM-15-SHS-BO	—	CLM-31-SHS-BO	—	CLM-66-SHS-BO			1.97					2.01			2.06			
CLM-16-SHS-BO	—	CLM-32-SHS-BO	—	CLM-67-SHS-BO	M16	1-1/4	2.95	1/2	5/8	1/2	3/16	3.00	15/16	21/32	7/32	3.05	5/8	11/16
CLM-17-SHS-BO	—	CLM-45-SHS-BO	—	CLM-68-SHS-BO			3.94					3.98				4.03		
CLM-18-SHS-BO	—	CLM-46-SHS-BO	—	CLM-69-SHS-BO			4.92					4.97				5.02		

* USA sizes are available zinc plated or with black oxide finish. Metric sizes are available only with black oxide finish (-BO only).