

## WCR-Series, Roller Cassette Torque Wrench

**ENERPAC**  
POWERFUL SOLUTIONS. GLOBAL FORCE.

▼ WCR4000 Roller Cassette with Spanner and W4000 Drive Unit



**Resolves bolt to pipe & bolt height restrictions**

- Provides a safe and reliable controlled bolting solution for flanges with limited access
- Spanners available to fit most commonly used API flanges
- Small nose radius – resolves bolt to pipe restrictions
- Slim spanner design – reduces bolt height restrictions
- Wide range of spanners ranging from 36 - 80 mm (1<sup>7</sup>/<sub>16</sub> - 3<sup>1</sup>/<sub>8</sub> inch)
- Includes handle to improve tool handling and safety
- Rigid steel body for maximum endurance and minimum downtime.



### SAFE LINK Design

SAFE-LINK spanner design includes a mechanical fuse inside the cassette, providing a safer bolting experience for the operator and bystanders.



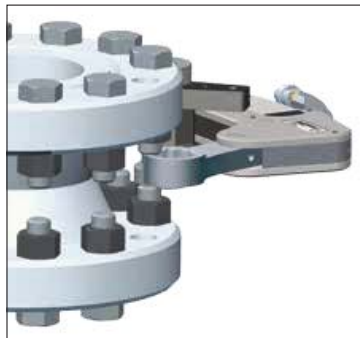
### Closed Bi-Hex Spanner

Slim ring style profile with bi-hexagonal design provides the ultimate mixture of versatility and durability.

▼ The small nose radius of the closed spanner resolves bolt to pipe restrictions where standard hexagon cassettes do not fit.



▼ The slim closed spanner design allows tool location between bolts where access is restricted and standard hexagon cassettes do not fit.



▼ The WCR-wrench must be removed and repositioned after each wrench cycle by operating the pump in the retract direction. The tool contains no spring return.



## Hydraulic Roller Cassette Torque Wrench



### WCR4000-Series Applications

The WCR4000 helps resolve narrow clearance restrictions in bolting of API and BOP flanges.

The Enerpac WCR4000 Roller Cassette has been developed for applications where there are severe clearance restrictions, particularly in height above the nut or between the bolt center and the inside of the joint.

Powered by the standard W4000 drive unit which is compatible with standard W-Series hexagon cassettes.

The WCR-wrench must be removed and repositioned after each wrench cycle by operating the pump in the retract direction. The tool contains no spring return.

### Rigid Steel Design

The most advanced and safe torque wrenches on the market. To ensure that the tools you buy meet our own exacting requirements, during the design process every prototype was put through finite element stress analysis, photo-elastic modeling, rigorous cyclic testing and strain gauging.

Steel tool body for maximum endurance and minimum downtime.

### WCR Series

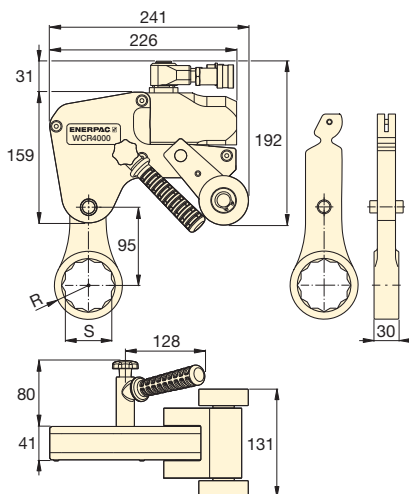


Bi-Hexagonal Spanner Size:  
**36 - 80 mm, 1 7/16 - 3 1/8"**

Spanner Nose Radius:  
**31 - 55 mm**

Maximum Torque:  
**5762 Nm (4250 Ft.lbs)**

Maximum Operating Pressure:  
**700 bar**



### Torque Wrench Pumps

Visit [enerpac.com](http://enerpac.com) for system matched air and electric torque wrench pumps providing control to operate hydraulic torque

wrenches.



### Torque Wrench Hoses

Use Enerpac THQ-700 Series torque wrench hoses with W-Series torque wrenches to ensure the integrity of your hydraulic system.

6 m long, 2 hoses	<b>THQ-706T</b>
12 m long, 2 hoses	<b>THQ-712T</b>

Closed Spanner Hexagon Size S (inch)   (mm)	Closed Spanner Model Number	Maximum Torque (Nm)	Spanner Radius R (mm)	* (kg)	Roller Cassette Assembly Model Nr.	Drive Unit Model Nr.
1 7/16   36	<b>W4107CS</b>	5762	31	1,9	<b>WCR4000</b>	<b>W4000</b>
1 1/2   38	<b>W4108CS</b>	5762	33	2,0		
1 5/8   41	<b>W4110CS</b>	5762	33	1,9		
1 13/16   46	<b>W4113CS</b>	5762	36	1,9		
1 7/8   48	<b>W4114CS</b>	5762	38	2,1		
2   50	<b>W4200CS</b>	5762	38	1,9		
2 3/16   55	<b>W4203CS</b>	5762	41	2,0		
2 3/8   60	<b>W4206CS</b>	5762	45	2,1		
2 9/16   65	<b>W4209CS</b>	5762	47	2,1		
2 3/4   70	<b>W4212CS</b>	5762	50	2,1		
2 15/16   75	<b>W4215CS</b>	5762	52	2,1		
3 1/8   80	<b>W4302CS</b>	5762	55	2,2		

\* Spanner weight. For total weight add 6,3 kg for WCR4000 and 2,0 kg for W4000.

▼ Powered by the standard W4000 drive unit which is compatible with standard W-Series hexagon cassettes.

