



**ROEMHELD**  
HILMA ■ STARK



**Workholding Systems**

## **Box jaws** for turning and milling centres

04/2014

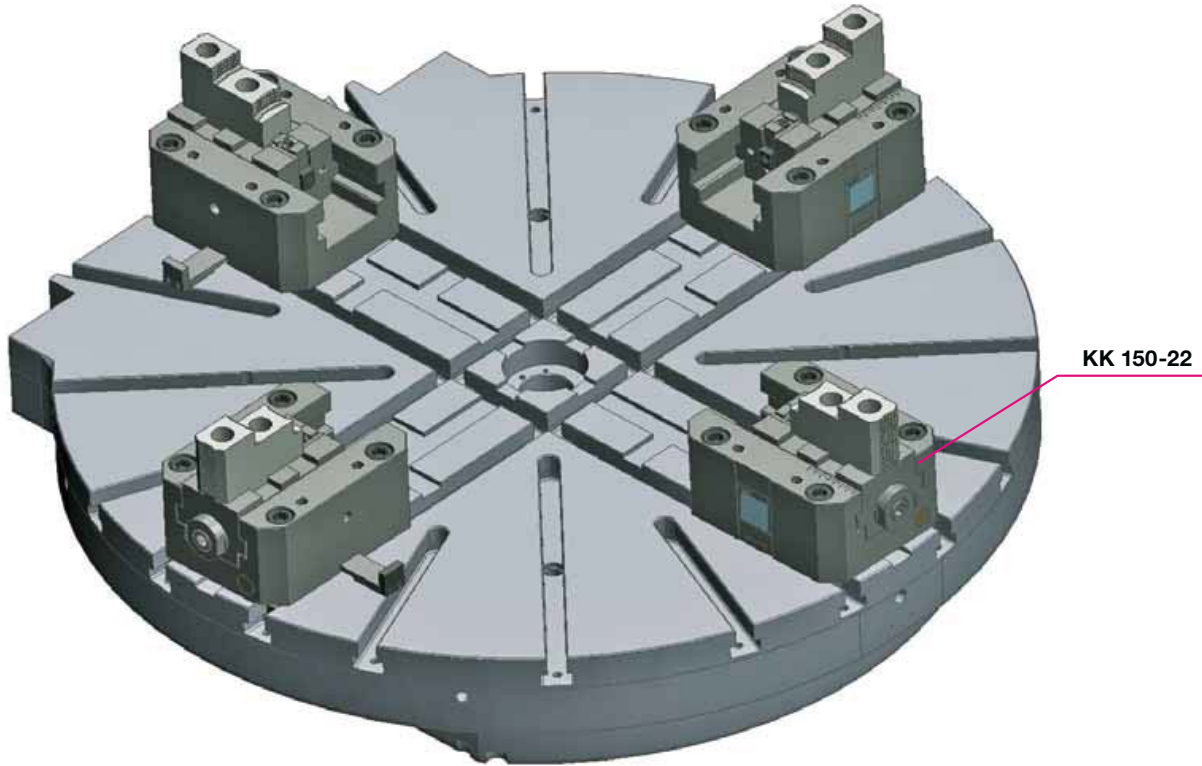
**P r o d u c t s** | *f o r* | p r o d u c t i v i t y

**10.2060**



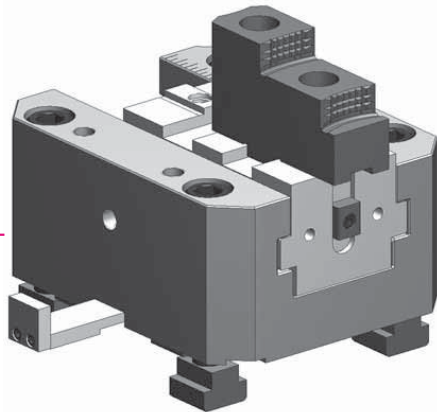
**ROEMHELD**  
HILMA ■ STARK

## Box jaws

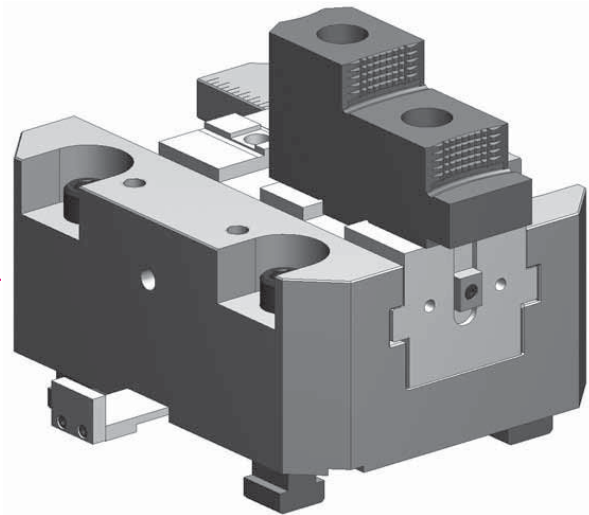


### Your benefits at a glance:

- ★ Lead screw and nut are completely encapsulated
- ★ Jaw insert\* for direct positioning of the workpiece on the face plate
- ★ Sturdy lead screw running in an almost maintenance-free plain bearing
- ★ Steel base (nitrided)
- ★ Easy preadjustment using a scale



**KK 180-22**



For holding workpieces in milling and turning centres, HILMA box jaws are the first choice. This new development combines a number of striking advantages compared with the normal level of technology available in the market.

The lead screw and the nut are fully encapsulated for enhancing process safety: This avoids the presence of swarf in the lead screw area and thus wear and subsequent failure of the box jaws.

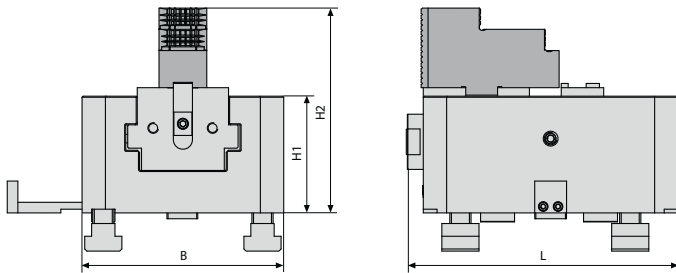
For a table diameter of approx. 1200 mm and above box jaws are the more economic alternative to jaw chucks. Please request further details without commitment!



**ROEMHELD**  
HILMA ■ STARK

## Technical data and dimensions

### Box jaws series KK, mechanically operated, standard design



Type	KK 150-22	KK 180-22
Part no.	9.2061.0101	9.2062.0101
Clamping force [kN/Nm]	30/150	63/400
Slot width [mm]	22	22
Slot spacing/ track [mm]	150	180
Max. stroke [mm]	70	82
Clamping jaw, modular displacement [mm]	1 x 60	1 x 82
Width of cross bar [mm]	30 x 7,5	40 x 7,5
Wrench size	SW 14 (hex. socket)	SW 24
Length x width [mm]	255 x 190	331 x 240
Height H 1 [mm]	110	130
Height H 2 [mm]	193	235

Other versions on request

We will be pleased to send more data as a PDF or CAD file. Please contact [info@hilma.de](mailto:info@hilma.de)

Products | for | productivity