

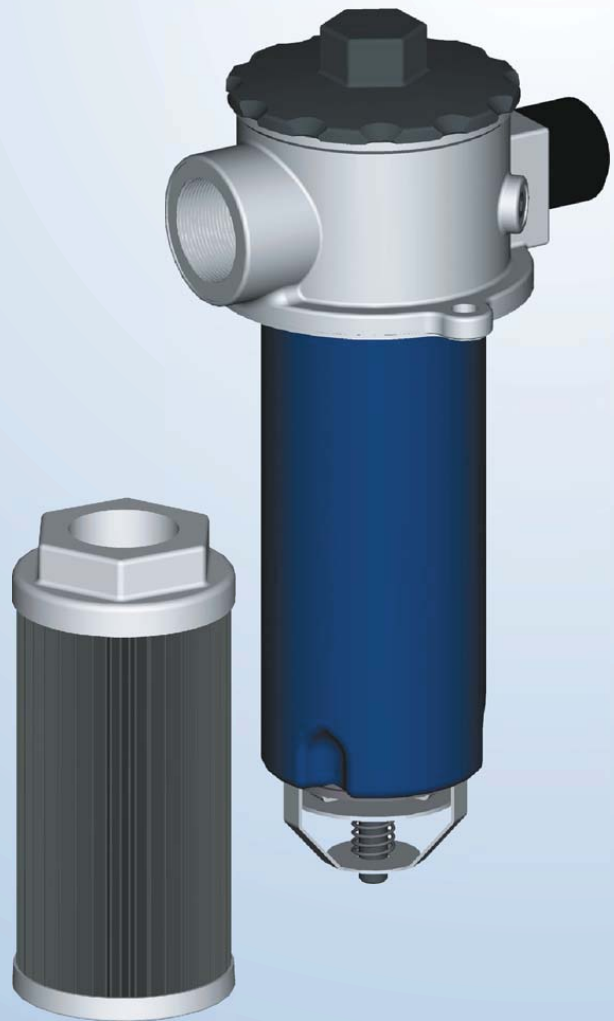


Industrial Filters · Accumulators

Suction Filters

S8 - 455

SE56- 560



*Filters for installation in
suction pipes*

*Suctions filters with housing for
tank mounting*

*Suction filters with housing
including automatic shut off valve.*

Low pressure drop

Various filter media available

*Nominal flow rate: 15 - 1000 l/min
Connection up to SAE 4*



Quality assured!

Suction Filters

S8 - 455
SE56 - 560

Nominal flow rate:
15 - 1000 l/min
Operating temperature:
-10°C up to +100°C
Connection up to SAE 4"

Application

Filtration of liquids and lubricants.
Filtration of liquids and gases.
Filtration of industrial liquids.
Direct installation in suction lines or tank mounting installation.

Design

S8-455 with pleated filter element on a pipe thread connection.
SE56 - 560: filter head with screwable cover, bypass valve and outlet.
Filter housing with filter element locator, filter inlet and return flow blockage for element service.
Material: as per spare parts list in this brochure.

Filter Element

Pleated design with optimised pleat density and various filter media.
The filter element is the most important component of the filter in view of prolonged life and wear protection of the system.
Oil cleanliness, the initial pressure drop and the dirt holding capacity are the most important criteria for selection.
For further detailed information please refer our "Filter Elements" brochure.
A proper filter selection is enabled by our "EPE - FILTERSELECT" software.

Accessories

Maintenance Indicators

For monitoring the filter element's contamination status, visual and visual/electrical indicators, with one or two switching points are available.

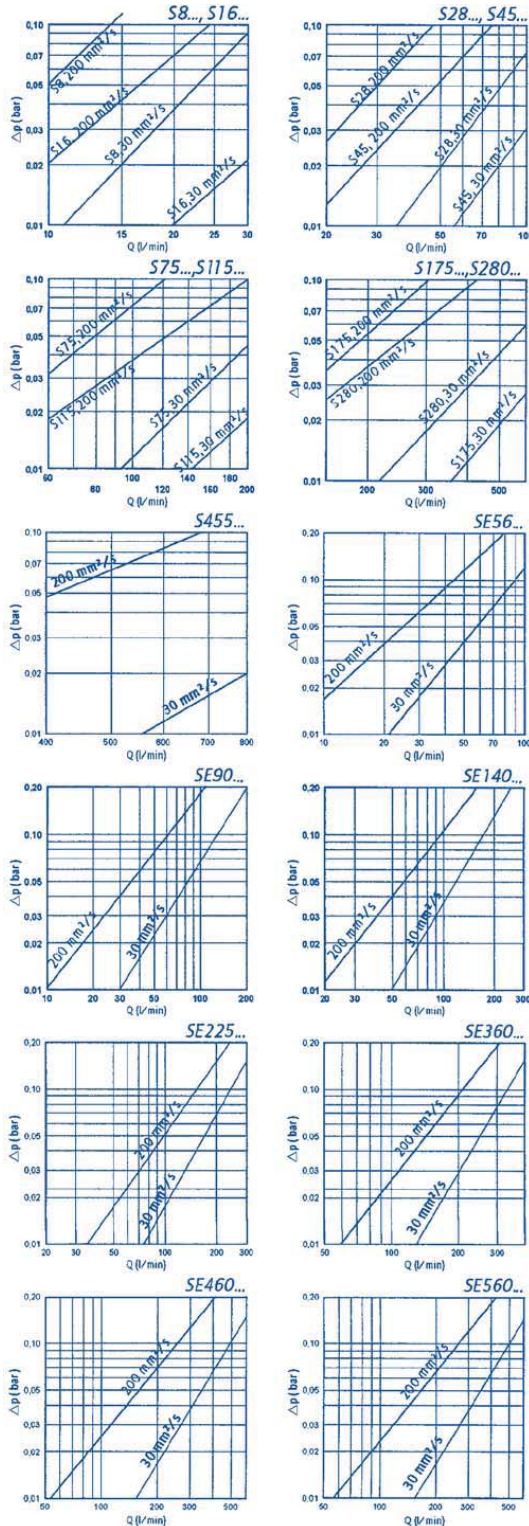
Bypass Valve

S8-455: bypass valve available
SE56-560: standard bypass valve with opening pressure of 0,3 bar included.
To protect the pump against cavitation during start up and over pressurisation due to clogging.

Performance Characteristics

Pressure drop curves for wire mesh G 100

Oil viscosity 30,200 mm²/sec
specific gravity < 0,9 kg/dm³



Ordering Information

Selection of filter size:
using the computer program
"EPE - FILTERSELECT"
or performance characteristics
in this brochure.
Special designs available on request.

Filter Type	Magnet	Maintenance Indicator	Connection	Material
SE = Suction Filter with housing	0 = without	0 = without A = vacuum gauge B 0,2 = vacuum switch normally closed 42 V C 0,2 = vacuum switch normally open 42 V	00 = pipe thread S0 = SAE flange F0 = square flange	0 = standard

Filter Assembly → SE 90 G 25 - S 00 - 0 1 A - 00 P 0 0

Seal Kit → D SE 90 - - A - 00 P 0

Filter Element	Nominal Size	Filtration Grade	Differential Pressure	Filter Element Design	Bypass Valve	Seal	Add. Info
Type: 6.	56 90 140 225 360 460 560	Nominal filtration grade in µm G = stainless steel wire mesh, cleanable G10 G25 G40 G60 G80 G100 VS = nonwoven media, not cleanable VS 25 VS 40 VS 80 P = paper, not cleanable PS P10 P25 Absolute filtration grade (ISO4572) in µm H...SL = micro glass-fibre, not cleanable H1SL H3SL H6SL H10SL H20SL AS = micro glass-fibre, water absorbing, not cleanable AS1 AS3 AS6 AS10 AS20	S = standard	0... = standard adhesive T = 100°C ...0 = standard material	1 = 0,3 bar	0 = without P = Buna N V = Viton	0 = without S = silicon free Y = with add. strainer only for SE 360 to SE 560 on request Z = inspection certificate

Filter Element → 6. 90 G 25 - S 00 - 0 - 0 -

Filter Type	Magnet	Maintenance Indicator	Connection	Material
S = Suction Filter	0 = without	0 = without	00 = standard	0 = standard

Filter Assembly → S 45 G 130 - S 00 - 0 0 0 - 00 0 0 0

Nominal Size	Filtration Grade	Differential Pressure	Filter Element Design	Bypass Valve	Seal	Add. Info
8, 16, 28, 45, 75, 115, 175, 280, 455	Nominal filtration grade in µm G = stainless steel wire mesh, cleanable G25 G40 G130 G200 G250 G300 G350 G450 G550 G600 G800 G1000 G1500 G2000	S = standard	0... = standard adhesive T = 100°C	0 = without 1 = 0,3 bar	0 = without	0 = without V = non return valve 0,02 bar Z = inspection certificate

Maintenance Indicator

A...visual	B...visual/electrical normally closed 42 V	C...visual/electrical normally open 42 V
Ordering information A = M 070	Ordering information B 0,2 = I 0,2 HS 32 00P*	Ordering information C 0,2 = I 0,2 HA 32 00P*
Switching symbol 	Switching symbol 	Switching symbol

*P = Buna N, V = Viton also possible

Filter Switching Symbol

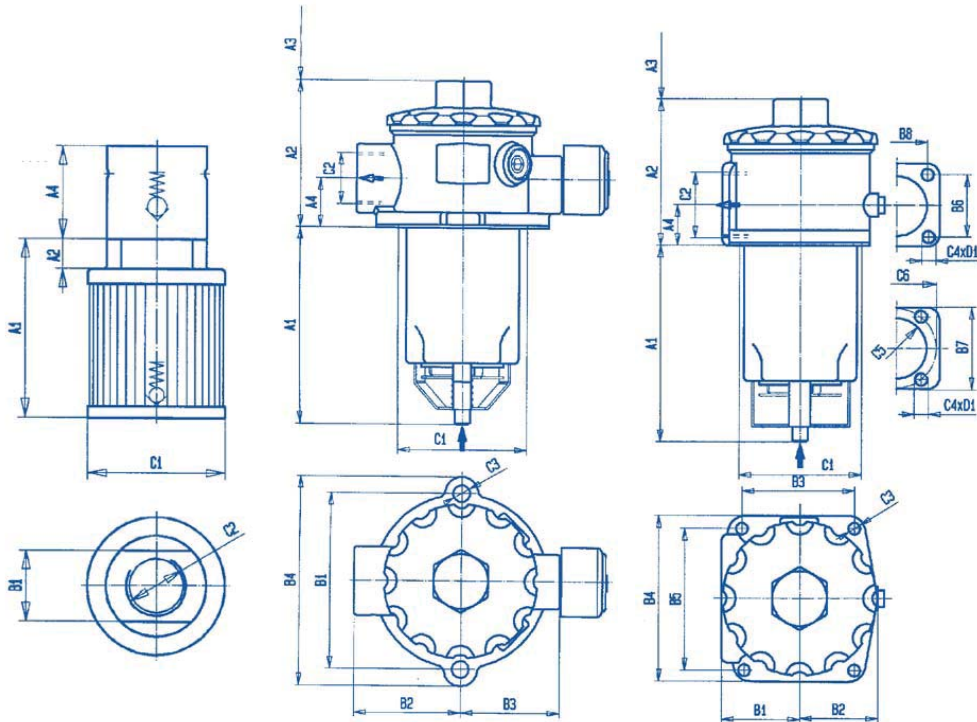
SE 56-560	S 8-455

Dimensions

S 8, S 16, S 28, S 45, S 75, S 115
S 175, S 280, S 455

SE 56, SE 90, SE 140

SE 225, SE 360, SE 460,
SE 560

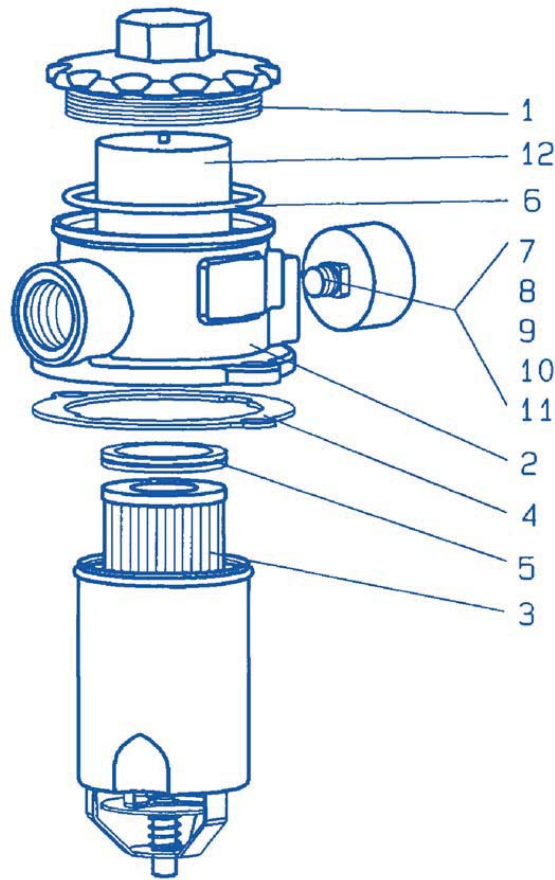


Size	Volume in ltrs.	Weight in kg ¹⁾	A1	A2	A3 ²⁾	A4	B1	B2	B3	B4	B5	B6	B7	B8	C1 Tank-Bore	C2 Connection	C3	C4	C5	C6	D1
S 8		0,05	45	12		—	24								ø 40	G 3/8					
S 16			60	13		35	36								ø 57	G 1/2					
S 28		0,2	90													G 3/4					
S 45		0,4	95	17		60	55								ø 77	G 1					
S 75		0,5	130													G 1 1/4					
S 115		0,6	135	21		54	75								ø 108	G 1 1/2					
S 175		0,7	180													G 2					
S 280		1,7	170	28		85	105								ø 150	G 2 1/2					
S 455			250													G 3					
SE 56	0,5	1,0	125	96	220	32	115	70	65	137					ø 74	G 1	ø 11				
SE 90	0,8	1,2	180												ø 95,5	G 1 1/2	ø 11,5				
SE 140	1,9	3,0	266	119	310	42	142	85	78												
SE 225										166		51		89		G 2 1/2		M 12			
SE 360	3,7	7,5	281	155		58	85								ø 130	DN 80	ø 11			ø 120	22
SE 460	4,0	8,7	301		280	80	120					146				SAE4"					
SE 560	4,8	9,1	361	188								77,8	154	130,2		3000 psi		M 16	ø 100		

¹⁾ = weight including standard filter element

²⁾ = servicing height for filter element replacement

Spare Parts



				Size	56	90	140	225	360	460	560
Part	Qty.	Designation	Material								
1	1	Filter cover	plastic	please indicate ordering information "Filter Assembly"							
2	1	Filter head	Aluminium cast	please indicate ordering information "Filter Assembly"							
3	1	Filter element	Various	please indicate ordering information "Filter Element"							
4	1	Profile seal	Various	please indicate ordering information "Seal Kit"							
5	1	Profile seal	Buna N./Viton	please indicate ordering information "Seal Kit"							
6	1	O-ring	Buna N./Viton	please indicate ordering information "Seal Kit"							
7	1	Plug	5.8	Part No. 785				Part No. 770			
8	1	Maintenance Indicator	Various	refer section "Maintenance Indicator"							
9	1	Seal	Fibre	—				please indicate ordering information "Seal Kit"			
10	1	Reduction for M 070	Steel	Part No. 1372							
11	1	Duplex fitting for I...	Steel	Part No. 1371							
12	1	Pressing with valve	Various	please indicate ordering information "Filter Assembly"							

Quality and Standardisation

The development, manufacturing and assembly of EPE Industrial filters and filter elements is performed within the guidelines of a certified quality management system according to DIN EN ISO 9001. The calculation of strength and the filter tests are done in compliance to actual pressure vessel regulations and national & international standards.

A filter inspection by accredited certification bodies (e.g. TÜV, GL, LRS, LRIS, ABS, BV, DNV, DRIRE, UDT etc.) is possible on request.



Industrial Filters · Accumulators

Installation, Starting and Maintenance

Filter Installation

Screw suction filter type S8-455 direct on pump suction line.
Type SE 56- 560: remove dust protection plug from filter inlet.
Mount filter assembly at tank using mounting device on the head (Part 2) considering and servicing length required for cleaning / replacing elements (Part 3).

Connection of Electrical Maintenance Indicator

Type: SE 56- 560:
Connect indicator using the two wired cable.
Please verify electrical ratings on the indicators name plate.

Starting

Switch on system pump.
Pay attention to pump noise, dismount filter assembly if necessary and check filtration grade and seals.

Maintenance

The filter element is clogged and needs to be replaced or cleaned if the vacuum gauge indicator moves into red alert range or the electrical switch is activated.

Filter Element Service

S8-455: switch off system , drain tank , disconnect suction filter from suction line.
SE 56-560: switch off system pump. Unscrew filter cover (Part 1), return flow blockage closes automatically, remove filter element from filter housing. Check filter housing inside and clean if necessary.
Replace filter element H...SL , P... and VS...
The filter element with G... media is cleanable. The efficiency of the cleaning process depends on the characteristics of contamination and the final pressure drop prior to servicing / cleaning the element.
Install cleaned or replaced filter element.
Check O-ring (Part 6) on filter head , replace in case of damage or wear.
Screw filter cover (Part 1) and tighten it at hexagon bolt using a suitable tool.
Operate filter as described above.

Technical modifications reserved!

20A/01/10.99/6000