



Intensifier System M- HC6 (up to 500 bar)



Description

The M- HC6 is a complete, ready- to- install, high- flow and high- pressure intensifier system. The system is based on the miniBOOSTER HC6 intensifier and includes an integral high- flow bypass and isolation valves.

P_{in} = 20– 350 bar
(Inlet pressure)

P_H = 500 bar
(Outlet pressure)

Q = 100 L/ min

Weight: 23 kg

Applications

The system is ideal for mobile attachments to take full advantage of the pump capacity for fast forward movement of the hydraulic cylinder(s) and to boost pressure, when needed to achieve intensified (crushing/ clamping) pressures. Typical Applications: Mobile attachments (Cutters - Crushers - Shears) Injection molding machines and Hydraulic presses.

- Extra tough
- System is shipped completely assembled and factory tested ready for installation
- Provides high flow and high pressure
- Available with several intensification ratios
- Optional and multiple connection arrangements

Mounting options

The M- HC6 intensifier system can be tailor made to match your application with following options.

M- HC6-001

A variant designed to be flanged directly to the high pres- sure cylinder. Supplied with 2 extra Pump P1 and Tank T1 ports (3/8" BSPP ports)

M- HC6-002

A variant designed to be flanged directly to the high pres- sure cylinder. Supplied with 2 extra Pump P1 and Tank T1 ports (1/2" BSPP ports)

M- HC6-003

A variant with a 1/2" BSPP high pressure port for tube or hose mounting

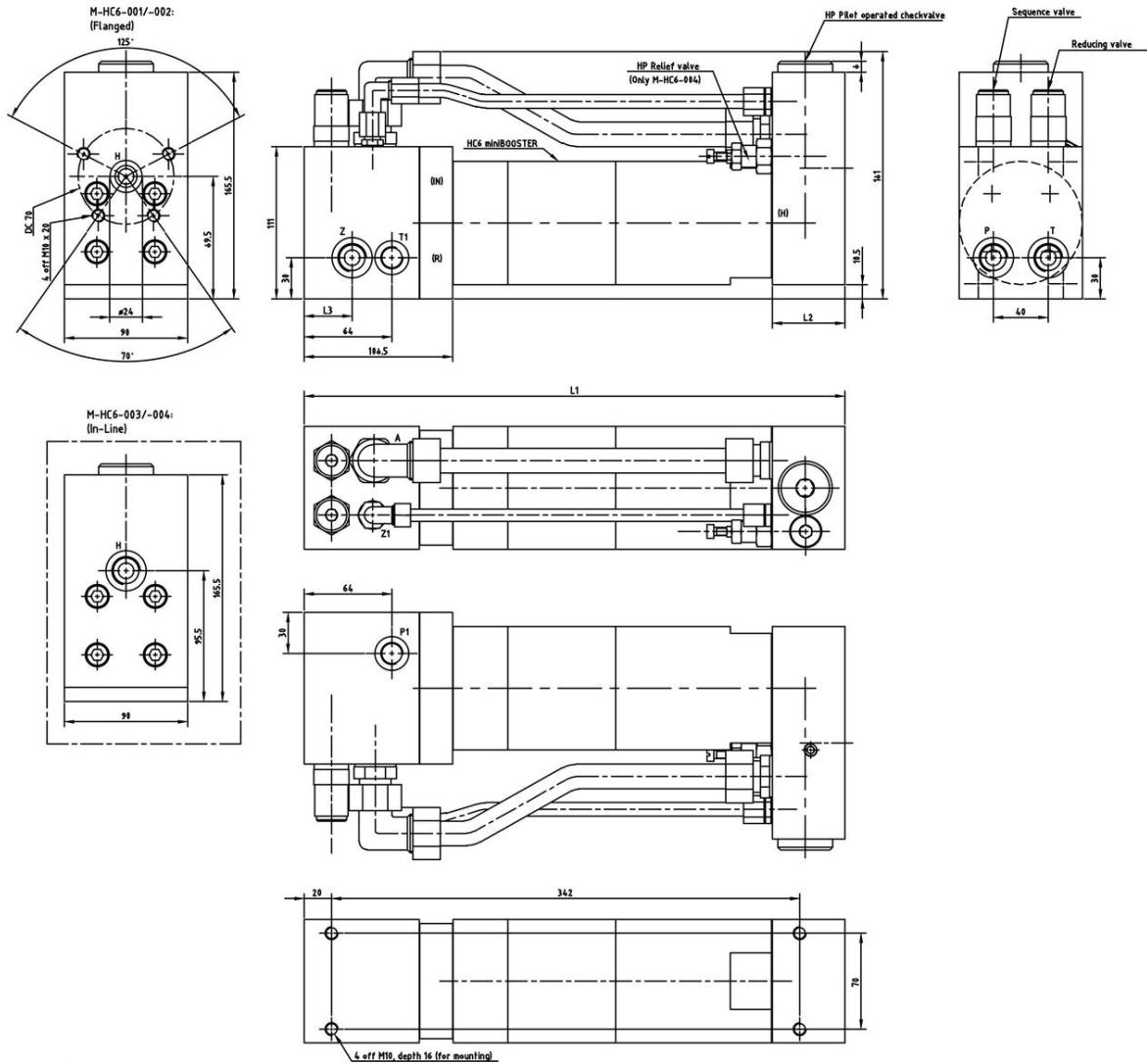
M- HC6-004

A variant with a 1/2" BSPP high pressure port for tube or hose mounting and a pressure relieve valve on the high pressure side, eliminating critical pressure peaks from the high pressre cylinder

Please send us your application needs for a proposal.

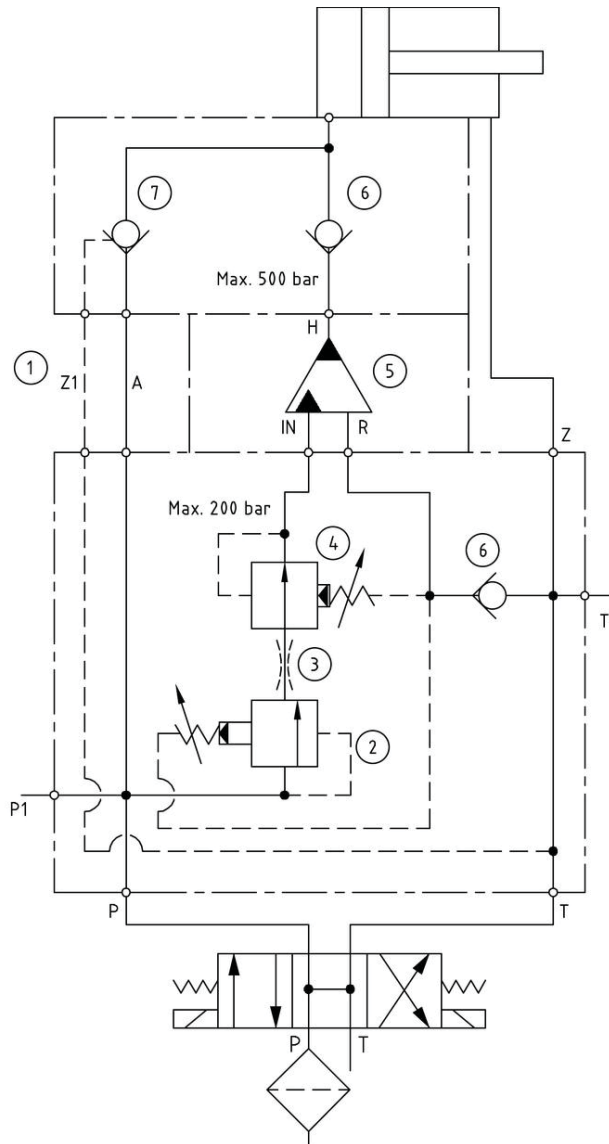


Dimensions



6-126

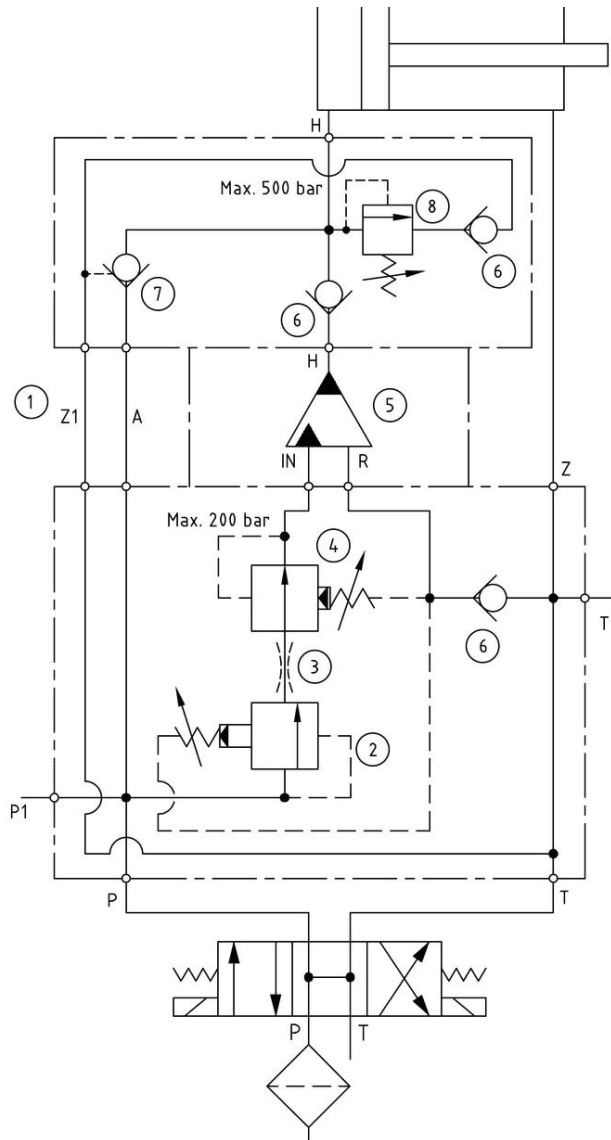
Functions Model M- HC6-001 / -002 / -003



0-262 Model



Functions Model M- HC6-004



0-289-02 Model



Ordering a miniBOOSTER M- HC6

Model	Connections H	Options	Intensification
M- HC6-001	Flange	P1, T1 3/8" BSP	1.9/2.5/3.3/4.0
M- HC6-002	Flange	P1, T1 1/2" BSP	1.9/2.5/3.3/4.0
M- HC6-003	Tube 1/2" BSP	1.9/2.5/3.3/4.0	
M- HC6-004	Tube 1/2" BSP	Relief valve on HP side	1.9/2.5/3.3/4.0

Ordering example of a miniBOOSTER M- HC6

An intensifier system M- HC6 for 500 bar 100 L/ min with 1/2" BSP thread connection on High Pressure side, for tube mounting. Mounted with a HC6-2.5- A-1:

M- HC6-003 – 2.5 – A – 1