

The Drive & Control Company

Rexroth
Bosch Group

Subplates sizes 10, 25 and 32 with porting pattern to DIN 24340 form D, ISO 5781 and ISO 6264

RE 45062

Edition: 2014-05

Replaces: 07.13



- ▶ Size 10, 25 und 32
- ▶ Maximum operating pressure 350 bar

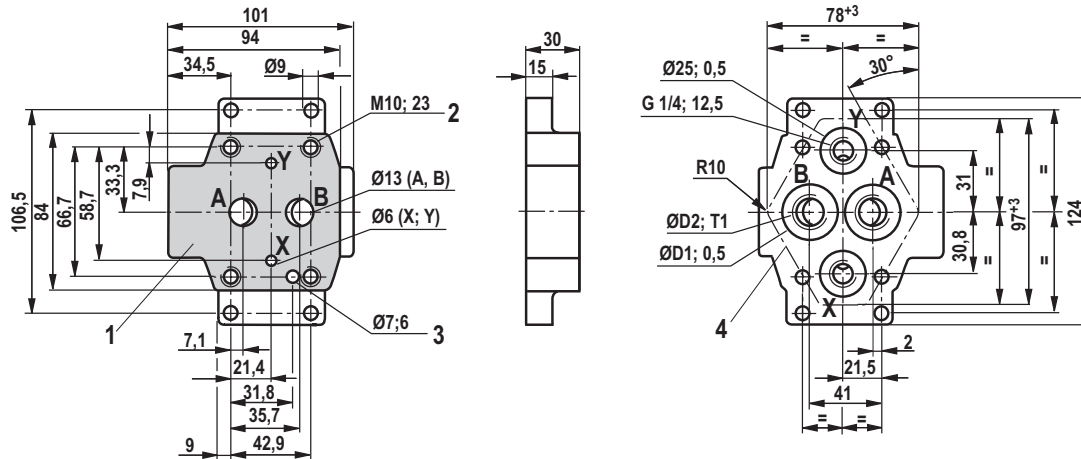
Contents

| | |
|---|---|
| Types G 460/01; G 461/01; G 467/01; G 468/01 - NG10 | 2 |
| Types G 412/01; G 413/01; G 469/01; G 470/01 - NG25 | 3 |
| Types G 414/01; G 415/01; G 471/01; G 472/01 - NG32 | 4 |

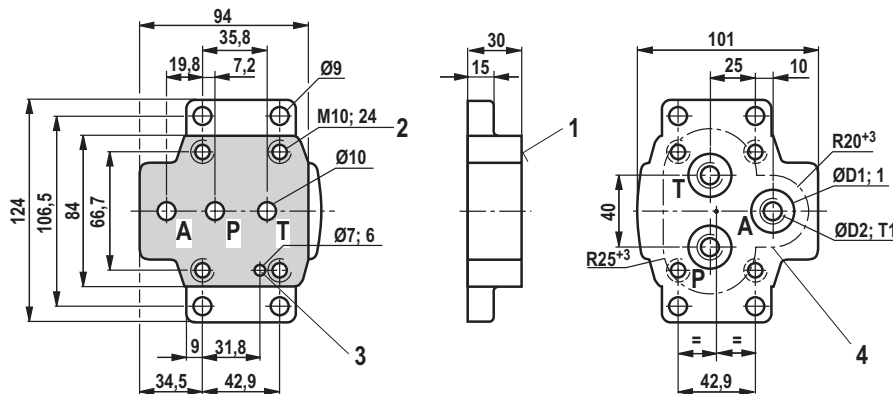
Bosch Rexroth AG, RE 45062, Edition: 2014-05

2/4 Subplates size 10, 25 und 32

Types G 460/01; G 461/01 - size 10
(dimensions in mm)



Types G 467/01; G 468/01 - size 10
(dimensions in mm)



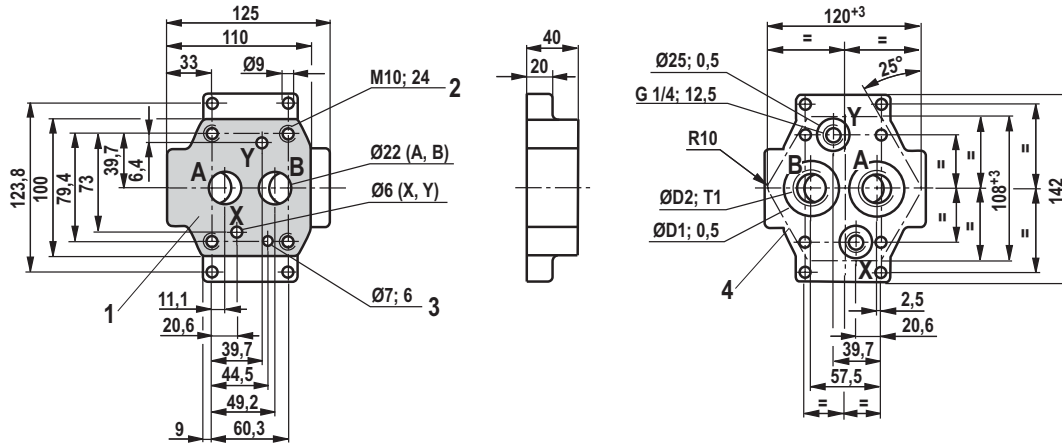
| Type | Material no. | Weight in kg | ØD1 | D2 | T1 | Valve mounting screws |
|----------|--------------|--------------|-----|-------|------|---|
| G 460/01 | R900440640 | 1,7 | 28 | G 3/8 | 12,5 | 4 hexagon socket head cap screws, metric ISO 4762 - M10 - 10.9-flZn-240h-L (separate order) |
| G 461/01 | R900439455 | | 34 | G 1/2 | 14,5 | |
| G 467/01 | R900442409 | | 28 | G 3/8 | 12 | |
| G 468/01 | R900453699 | | 34 | G 1/2 | 14 | |

- 1 Valve contact surface
- 2 Valve fixing thread
- 3 Bore for locating pin
- 4 Front panel cutout

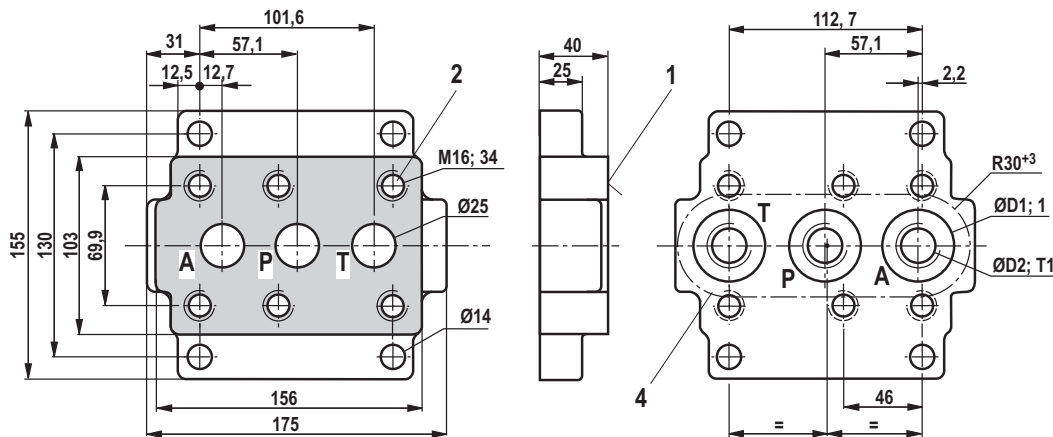
Notes on valve mounting screws:

The length and tightening torque of valve mounting screws depend on the valve types and sandwich plates possibly provided.

Types G 412/01; G 413/01 - NG25
(dimensions in mm)



Types G 469/01; G 470/01 - NG25
(dimensions in mm)



| Type | Material no. | Weight in kg | ØD1 | D2 | T1 | Valve mounting screws |
|----------|--------------|--------------|-----|-------|------|---|
| G 412/01 | R900440266 | 3,3 | 42 | G 3/4 | 16,5 | 4 hexagon socket head cap screws, metric ISO 4762 - M10 - 10.9-fIZn-240h-L (separate order) |
| G 413/01 | R900440431 | | 47 | G 1 | 19,5 | |
| G 469/01 | R900451805 | 5,2 | 42 | G 3/4 | 16 | 6 hexagon socket head cap screws, metric ISO 4762 - M16 - 10.9-fIZn-240h-L (separate order) |
| G 470/01 | R900448459 | | 47 | G 1 | 18 | |

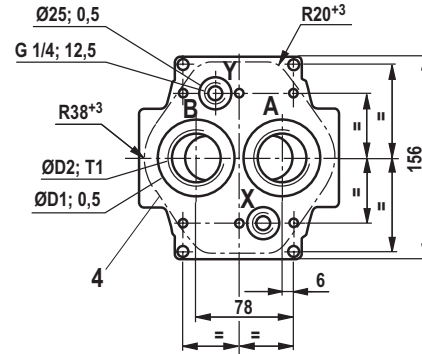
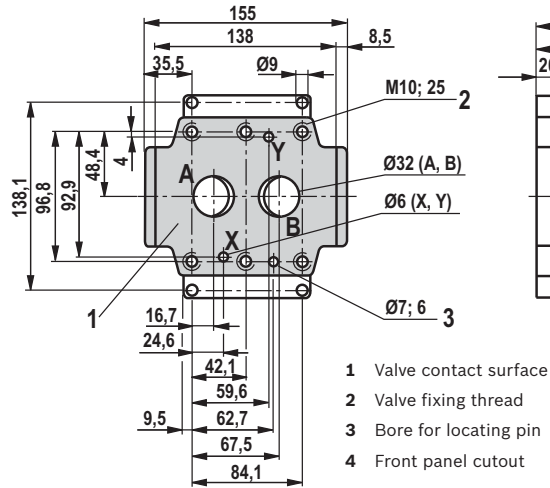
- 1 Valve contact surface
- 2 Valve fixing thread
- 3 Bore for locating pin
- 4 Front panel cutout

Notes on valve mounting screws:

The length and tightening torque of valve mounting screws depend on the valve types and sandwich plates possibly provided.

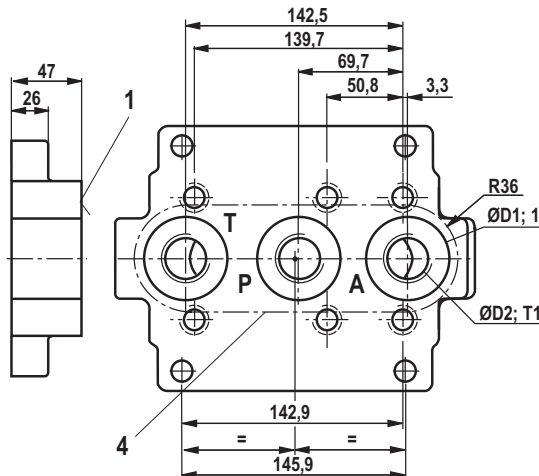
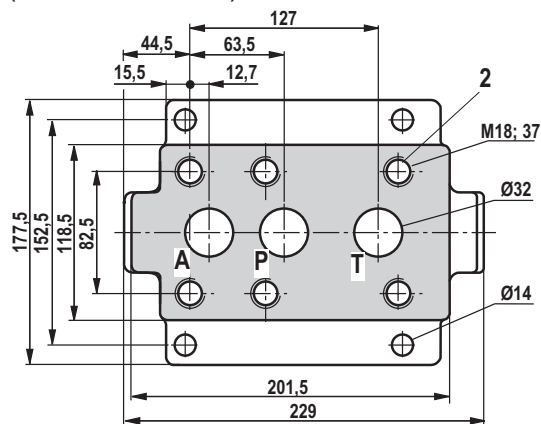
4/4 Subplates size 10, 25 und 32

Types G 414/01; G 415/01 - NG32 (dimensions in mm)



Notes on valve mounting screws:
The length and tightening torque of valve mounting screws depend on the valve types and sandwich plates possibly provided.

Types G 471/01; G 472/01 - NG32 (dimensions in mm)



| Type | Material no. | Weight in kg | ØD1 | D2 | T1 | Valve mounting screws |
|----------|--------------|--------------|-----|---------|------|---|
| G 414/01 | R900443673 | 5 | 58 | G 1 1/4 | 20,5 | 6 hexagon socket head cap screws, metric ISO 4762 - M10 - 10.9-flZn-240h-L (separate order) |
| G 415/01 | R900441983 | | 65 | G 1 1/2 | 22,5 | |
| G 471/01 | R900445297 | 8,2 | 56 | G 1 1/4 | 20 | 6 hexagon socket head cap screws, metric ISO 4762 - M18 - 10.9-flZn-240h-L (separate order) |
| G 472/01 | R900453893 | | 61 | G 1 1/2 | 22 | |

© This document, as well as the data, specifications and other information set forth in it, are the exclusive property of Bosch Rexroth AG. It may not be reproduced or given to third parties without its consent.
The data specified above only serve to describe the product. No statements concerning a certain condition or suitability for a certain application can be derived from our information. The information given does not release the user from the obligation of own judgment and verification. It must be remembered that our products are subject to a natural process of wear and aging.