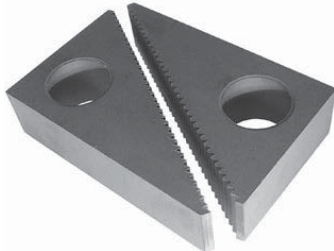


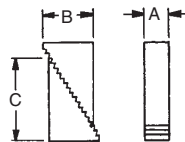
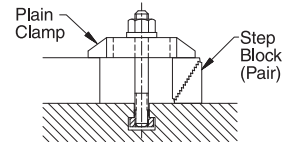
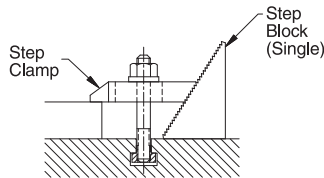
STEP BLOCKS & CLAMPS

1018 STEEL, CARBURIZED-HARDENED, BLACK OXIDE FINISH



Step Blocks (pair)

Serrated block that can be used individually or in pairs, as a clamp rest. (One part number consists of a pair of blocks). Use a single block with Step Clamps, or a pair of blocks with Plain Clamps. All blocks and clamps are made from top-grade steel.

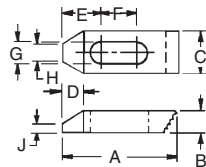


STEP BLOCKS (PAIR)

PART NO.	A	B	C	HEIGHT RANGE
CL-10-BS		.681	1.104	3/4 to 1-1/2
CL-20-BS	1	1.068	1.747	1-1/8 to 2-1/2
CL-30-BS		2.355	3.990	2-1/2 to 6
CL-40-BS		1.454	2.390	1-3/4 to 3-3/4
CL-50-BS	1-1/2	2.355	3.890	2-1/2 to 6
CL-60-BS		3.385	5.604	3-1/2 to 9
CL-70-BS		1.454	2.390	1-3/4 to 3-3/4
CL-80-BS	2	2.355	3.890	2-1/2 to 6
CL-90-BS		3.385	5.604	3-1/2 to 9



Step Clamp

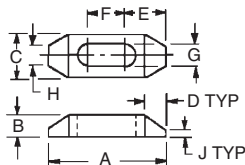


STEP CLAMPS

PART NO.	STUD SIZE	DIMENSIONS									
		A	B	C	D	E	F	G	H	J	
CL-32-STC		2-1/2	1/2		7/16	7/8	13/16		7/16		
CL-34-STC	3/8 or M10	4	5/8	1	11/16	1-3/16	1-5/16	7/16	1/4	1/4	
CL-36-STC		6	3/4	1-1/8	3/4	1-1/8	2-3/16		3/8	5/16	
CL-42-STC		2-1/2	1/2	1-1/8	7/16	29/32	11/16		9/16	3/16	
CL-44-STC	1/2 or M12	4	3/4		11/16	1-7/32	1-3/16	9/16	1/2	1/4	
CL-46-STC		6	7/8	1-1/4	3/4	1-5/32	2-1/8		7/16	5/16	
CL-52-STC		2-1/2	5/8	1-1/4	3/8	15/16	9/16		3/4	3/8	
CL-54-STC	5/8 or M16	4	3/4		11/16	1-1/4	1-1/16	11/16	11/16		
CL-56-STC		6	7/8	1-1/2	3/4	1-9/32	1-15/16		9/16	7/16	
CL-64-STC		4	3/4		3/4	1-5/16	15/16			5/16	
CL-66-STC	3/4 or M20	6		1-1/2	13/16	1-1/4	1-7/8	13/16	5/8	1/2	
CL-68-STC		8	1	1-3/4	3/4	1-7/8	2-3/16		3/4	5/8	



Plain Clamp

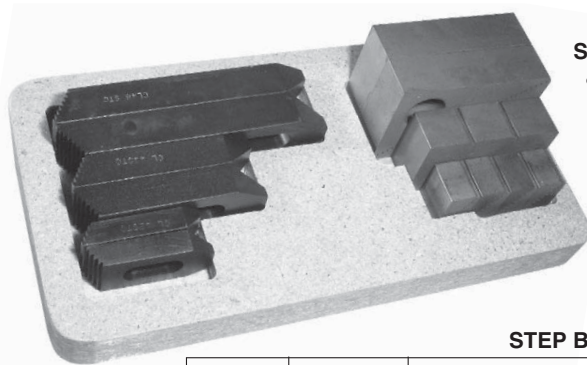


PLAIN CLAMPS

PART NO.	STUD SIZE	DIMENSIONS									
		A	B	C	D	E	F	G	H	J	
CL-32-PC		2-1/2	1/2	1	7/16	27/32	13/16		7/16		
CL-34-PC	3/8 or M10	4	5/8		11/16	1-1/32	1-7/16	7/16	1/4	1/4	
CL-36-PC		6	3/4	1-1/8	3/4	1-5/32	2-3/16		3/8	5/16	
CL-42-PC		2-1/2	1/2	1-1/8	7/16	29/32	11/16		9/16	3/16	
CL-44-PC	1/2 or M12	4	3/4	1-1/4	11/16	1-5/32	1-5/16	9/16	1/2	1/4	
CL-46-PC		6	7/8		3/4	1-9/32	2-1/16		7/16	5/16	
CL-52-PC		2-1/2	5/8	1-1/4	3/8	31/32	9/16		3/4	3/8	
CL-54-PC	5/8 or M16	4	3/4		11/16	1-9/32	1-3/16	11/16	11/16		
CL-56-PC		6	7/8	1-1/2	3/4	1-13/32	1-15/16		9/16	7/16	
CL-64-PC		4	3/4	1-1/2	3/4	1-11/32	1-1/16			5/16	
CL-66-PC	3/4 or M20	6	1		13/16	1-15/32	1-15/16	13/16	5/8	1/2	
CL-68-PC		8	1-1/8	1-3/4	3/4	1-29/32	2-3/16		3/4	5/8	

STEP BLOCKS & CLAMPS

11L17 STEEL, CARBURIZED-HARDENED, BLACK OXIDE FINISH



Step Block & Clamp Set

An assortment of Step Clamps and Step Blocks in a handy wooden holder. Available for stud sizes from 3/8-16 to 3/4-10 (M10 to M20 metric studs).

STEP BLOCK & CLAMP SETS

PART NO.	STUD SIZE	STEP CLAMPS (2) EACH		STEP BLOCK PAIRS (2) EACH	HOLDER
CL-10-SBC	3/8-16 or M10	CL-32-STC, CL-34-STC, CL-36-STC	STANDARD	CL-10-BS, CL-20-BS, CL-30-BS	CL-1-BSH
CL-20-SBC	1/2-13 or M12	CL-42-STC, CL-44-STC, CL-46-STC	STANDARD	CL-10-BS, CL-20-BS, CL-30-BS	CL-1-BSH
CL-40-SBC			HIGH-RISE	CL-40-BS, CL-50-BS, CL-60-BS	CL-2-BSH
CL-30-SBC	5/8-11 or M16	CL-52-STC, CL-54-STC, CL-56-STC	STANDARD	CL-10-BS, CL-20-BS, CL-30-BS	CL-1-BSH
CL-50-SBC			HIGH-RISE	CL-40-BS, CL-50-BS, CL-60-BS	CL-2-BSH
CL-60-SBC	3/4-10 or M20	CL-64-STC, CL-66-STC, CL-68-STC	HIGH-RISE	CL-40-BS, CL-50-BS, CL-60-BS	CL-3-BSH



Step Block Set

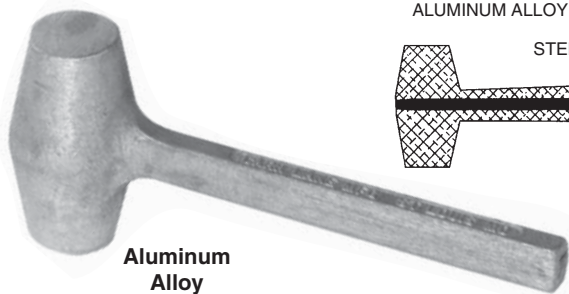
A complete assortment of Step Blocks in a handy wooden box.

STEP BLOCK SETS

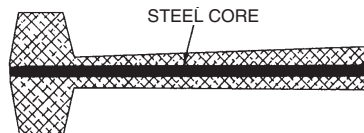
PART NO.	STEP BLOCK PAIRS	BOX
CL-30-SBS	(4)CL-10-BS, (4)CL-20-BS, (2)CL-30-BS	CL-3-SBB

NO-MAR HAMMERS

ALUMINUM ALLOY WITH STEEL CORE



Aluminum Alloy



STEEL CORE

Economical aluminum alloy hammer. Excellent alternative to old-fashioned lead hammers, to eliminate the risk of lead contamination. One-piece cast construction with a steel core for extra strength. Applications include metalworking, tooling, automotive assembly and repair work, straightening work, car body work, and mold construction. Available in two sizes.

PART NO.	WEIGHT	FACE DIA	HANDLE LENGTH TO CENTERLINE OF FACE
CL-1-NMH	2 lb	1-1/2	10-1/2
CL-2-NMH	3.5 lb	2	11