

Electric Drives
and Controls

Hydraulics

Linear Motion and
Assembly Technologies

Pneumatics

Service

Rexroth
Bosch Group

Conveyor Type IKF, IBF, ISF

RE 50402/09.09

1/4

Technical information

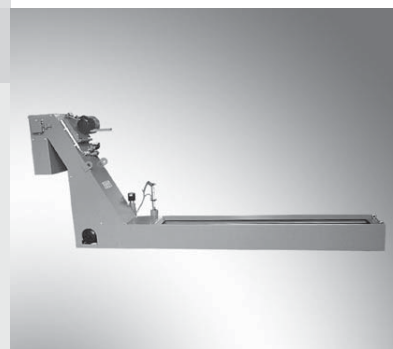


Table of contents

Content	Page
Introduction	2
Standard construction	2
Application	2
Designed as	2
Special features	2
Function	3

Introduction

For conveying and extracting metal swarf

Conveyor with slat band, drag-chain and slotted screen as swarf pre-extractor for the conveying of metal swarf and extraction of coolants.

Output, design and construction are matched to the customer's specification by means of a modular system.

Impurities in the coolant are continuously removed after being deposited and the coolant is returned to the system by means of a level-controlled lift pump.

Standard construction

- Robust edge-welded design
- With integrated lifting tank
- Drive station on bracket or laterally flange-mounted
- Motor enclosed
- Torque cut-off
- Tamper-proof removal
- Use of swarf conveyor trough as equalizing tank, thereby increasing coolant volume
- Removal slope with different lead angles
- Floor installation or as insert version for insertion in the machine bed
- Height-adjustable and/or with rollers
- Double-stranded chain with drag-chain angle or slat-band plates

Application

For pre-extraction and pre-filtration of emulsions, solutions, waters, oils up to 75 mm²/s during the machining of steel, cast iron, light and non-ferrous metals.

Designed as

- Type IKF drag-chain conveyor in standard design
- Type IBF drag-chain conveyor with overhead bottom
- Type ISF slat-band conveyor

Special features

- As single conveyor or interlinked equipment
- Modular system adapted to customer specification
- Long conveyor with separation points
- Separation points in rectangular flange design
- Plug-in or slotted screen inserts for coarse filtration
- Integrated screen filtration (slotted or punched screen) with direct machine feed possible e.g. 100 µm filtration rating

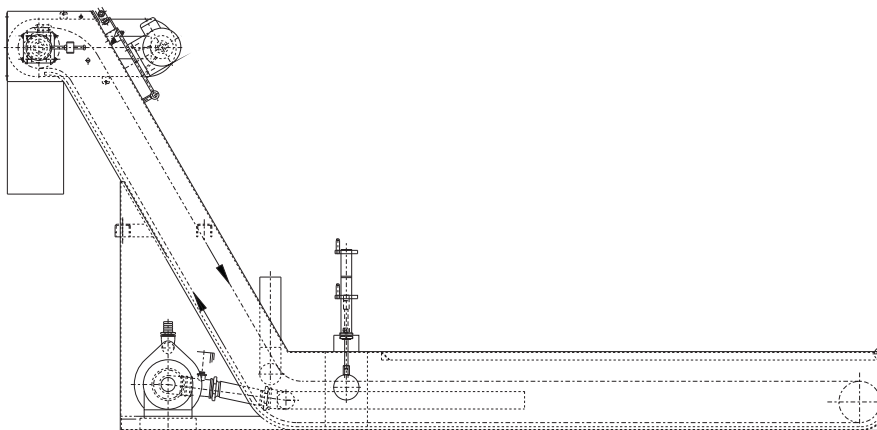
Function

The fluid to be filtered passes into the conveyor via the feeding section.

The impurities contained in the coolant are deposited and continuously removed by the conveyor equipment.

The coolant is conducted back to the filter system by a level-controlled lift pump.

With integrated screen filtration, the coolant is sucked out through a slotted or punched screen by a pump and can be pumped directly to the machine tool in a pre-purified state.



Notes

© This document, as well as the data, specifications and other information set forth in it, are the exclusive property of Bosch Rexroth AG. It may not be reproduced or given to third parties without its consent. The data specified above only serve to describe the product. No statements concerning a certain condition or suitability for a certain application can be derived from our information. The information given does not release the user from the obligation of own judgment and verification. It must be remembered that our products are subject to a natural process of wear and aging.