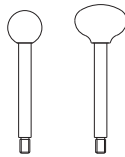
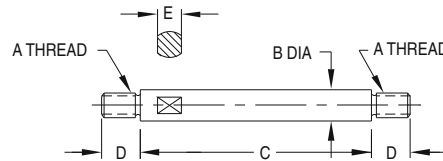


LEVER BARS

300-SERIES STAINLESS STEEL



Versatile Lever Bars available in three diameters, each in several lengths. 300-series stainless steel polished to a beautiful finish. Can be used with the hubs on page 125 to make lever handles. Wrench flat allows firm tightening.



USA

PART NO.	A	B DIA	C	D	E
CL-515-LVB-S			1.5		
CL-522-LVB-S			2.2		
CL-530-LVB-S	5/16-18	.39	3.0	7/16	5/16
CL-540-LVB-S			4.0		
CL-555-LVB-S			5.5		
CL-620-LVB-S			2.0		
CL-627-LVB-S			2.7		
CL-637-LVB-S	3/8-16	.47	3.7	1/2	3/8
CL-647-LVB-S			4.7		
CL-660-LVB-S			6.0		
CL-837-LVB-S			3.7		
CL-847-LVB-S	1/2-13	.55	4.7	5/8	7/16
CL-857-LVB-S			5.7		
CL-867-LVB-S			6.7		

LEVER HANDLES

300-SERIES STAINLESS STEEL



**Single
Lever Handle**

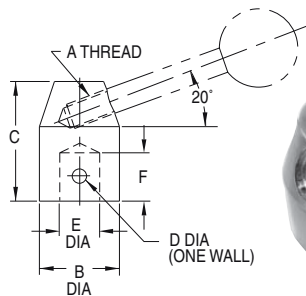


**Triple
Lever Handle**

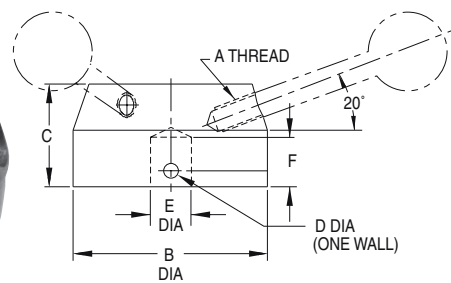
Fast, efficient levers that provide high torque. These attractive Lever Handles are made of 300-series stainless steel, polished to a beautiful finish. Hubs are available in single-handle or triple-handle versions, each in two sizes. Lever Handles can be totally customized by choosing Lever Bar length (see page 124) and Knob type (see pages 134-138).



Single Hub



Triple Hub



SINGLE LEVER HANDLE — ORDER HUB, LEVER BAR, AND KNOB SEPARATELY (USA)

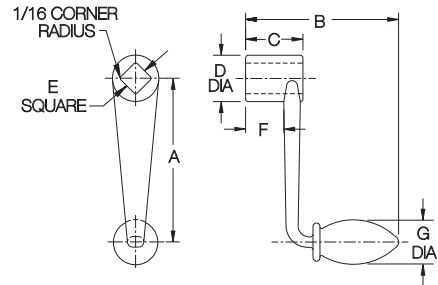
PART NO. HUB ONLY	A	B DIA	C	D DIA	E	F	PART NO. LEVER BAR	PART NO. KNOB
CL-116-LHH-S	5/16-18	1	1-1/2	1/8	3/8 DIA REAMED	5/8	SEE PAGE 124	SEE PAGES 134-140
CL-1160-LHH-S				—	3/8-16 TAPPED	9/16		
CL-128-LHH-S	3/8-16	1-1/4	1-7/8	5/32	1/2 DIA REAMED	3/4		
CL-1280-LHH-S				—	1/2-13 TAPPED	11/16		

TRIPLE LEVER HANDLE — ORDER HUB, LEVER BARS, AND KNOBS SEPARATELY (USA)

CL-316-LHH-S	5/16-18	2	1	3/16	3/8 DIA REAMED	3/4	SEE PAGE 124	SEE PAGES 134-140
CL-328-LHH-S	3/8-16	2-3/8	1-3/16	3/16	1/2 DIA REAMED	7/8		

CRANK HANDLES

NODULAR IRON PER ASTM A536 CLASS 65-45-12, ZINC PLATED CLEAR CHROMATE



Rugged crank handle with a comfortable grip. Choice of three sizes that fit all common square drives.

PART NO.	SQUARE DRIVE SIZE	A	B	C	D DIA	E	F	G DIA
CL-0-H	3/8 or 10mm	2-1/4	3	1	7/8	13/32	5/8	5/8
CL-1-H	1/2 or 12mm	3-3/4	4-3/16	1-5/16	1-1/16	17/32	7/8	7/8
CL-2-H	5/8 or 16mm	5-1/4	5-1/2	2-1/2	1-3/8	21/32	1-3/4	1

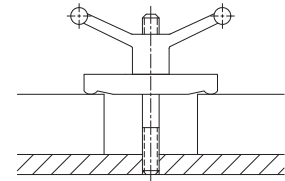
SPEED BALL HANDLES

NODULAR IRON PER ASTM-A536 CLASS 65-45-12, ZINC PLATED CLEAR CHROMATE



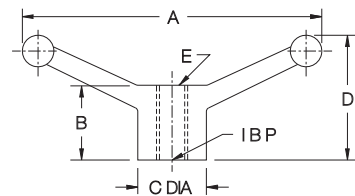
Double Arm

Speed handles that are weighted for quick turning. Long arm extensions provide excellent leverage for hand tightening.



DOUBLE ARM (USA & METRIC)

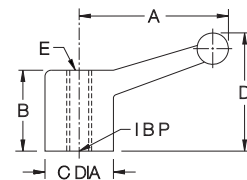
PART NO.	A	B	C DIA	D	E
CL-4-SBH	4-7/8	1-5/8	1-1/8	2-1/4	BLANK
CL-44-SBH					1/2-13
CLM-44-SBH					M12
CL-6-SBH	6	1-5/8	1-3/8	2-3/8	BLANK
CL-64-SBH					5/8-11
CLM-64-SBH					M16
CL-8-SBH	8	1-13/16	1-3/4	2-7/8	BLANK
CL-84-SBH					3/4-10
CLM-84-SBH					M20



Single Arm

SINGLE ARM (USA & METRIC)

PART NO.	A	B	C DIA	D	E
CL-5-SBH	3	1-5/8	1-3/8	2-3/8	BLANK
CL-55-SBH					1/2-13
CLM-55-SBH					M12
CL-7-SBH	4-3/8	2	1-5/8	3-1/2	BLANK
CL-75-SBH					3/4-10
CLM-75-SBH					M20



BALANCED CRANK HANDLES

300-SERIES STAINLESS STEEL

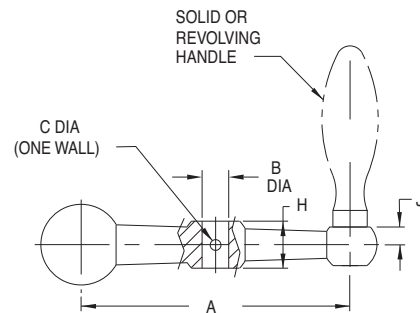
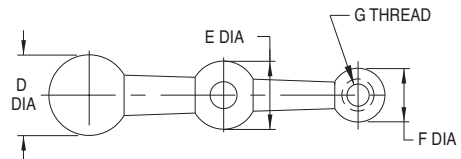


**Rounded Handle
(Solid or Revolving)
Stainless Steel**

**Square Handle
(Solid or Revolving)
Stainless Steel**

High-quality, stainless steel crank handle with a beautiful polished finish. Handle is balanced for smooth operation, and so that no rotation occurs due to handle weight. The reamed center hole is cross-drilled in one wall for easy installation by pinning. Order body and handle separately, with a choice of four handle types:

- Rounded-design Solid Handle (p. 120)
- Rounded-design Revolving Handle (p. 121)
- Square-design Solid Handle (p. 120)
- Square-design Revolving Handle (p. 121)



ORDER BODY AND SOLID/REVOLVING HANDLE SEPARATELY

PART NO. BODY ONLY	A	B DIA	C DIA	D DIA	E DIA	F DIA	G	H	J	PART NO. — SOLID OR REVOLVING HANDLE			
										ROUNDED SOLID	ROUNDED REVOLVING	SQUARE SOLID	SQUARE REVOLVING
CL-20-CHB-S	2-1/2	5/16	1/8	1	3/4	5/8	1/4-20	9/16	1/4	CL-250-SH-S	CL-250-RH-S	CL-200-SH-S	CL-200-RH-S
CL-30-CHB-S	3-1/8	3/8	5/32	1-1/4	1	3/4	5/16-18	11/16	5/16	CL-350-SH-S	CL-350-RH-S	CL-300-SH-S	CL-300-RH-S
CL-40-CHB-S	4												
CL-50-CHB-S	5	1/2	3/16	1-1/2	1-1/4	1	3/8-16	7/8	3/8	CL-450-SH-S	CL-450-RH-S	CL-400-SH-S	CL-400-RH-S
CL-51-CHB-S		5/8*											

*1/8" Square keyway on this size only.

CRANK HANDLES

CRANK BODY & REVOLVING HANDLE: MATTE BLACK THERMOPLASTIC
HUB: MILD STEEL, BLACK OXIDE FINISH
CENTER TRIM COVER: ALUMINUM, MATTE ANODIZED
REVOLVING HANDLE SPINDLE: MILD STEEL, ZINC PLATED CLEAR CHROMATE



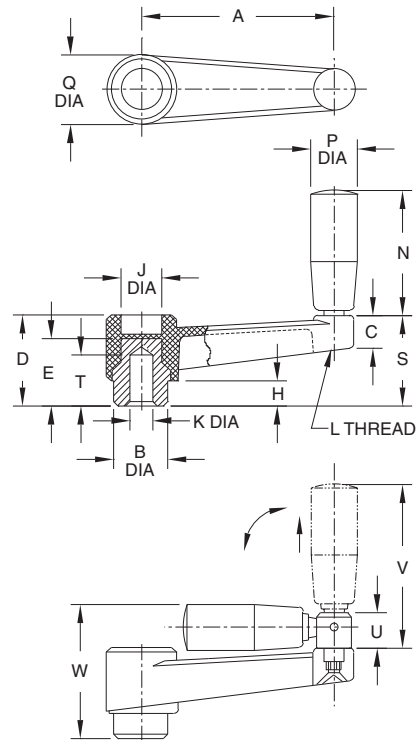
Thermoplastic
with
Revolving Handle



Thermoplastic
with
Foldable Revolving Handle

ELESA
ORIGINAL
DESIGN

High-quality, fiber-reinforced technopolymer Crank Handle, available in five sizes. High-strength design suitable for heavy-duty applications. Matte black high-strength thermoplastic (resistant to oils, solvents, and grease; excellent impact resistance, operating temperatures to 230°F). Molded-in steel hub, blank with a pilot hole. Center trim cover is self-adhesive (apply after modifying hub). Furnished with a Revolving Handle or a Foldable Revolving Handle. Foldable handle is positively locked in extended position. To allow folding, the handle must first be pulled outward, against a spring force, then folded 90°. Once folded, the handle is held in that position also by spring force.



PART NO. WITH REVOLVING HANDLE	PART NO. WITH FOLDABLE REVOLVING HANDLE	A	B DIA	C	D	E	H	J DIA	K DIA	L	N	P DIA	Q DIA	S	T	U	V	W
CL-21-CHP	—	2.52	.71	.51	1.30	1.14	.39	.63	.236	M6	1.57	.71	1.06	1.30	.71	—	—	—
CL-31-CHP	CL-32-CHP	3.15	.87	.51	1.42	1.26	.39	.67	.236	M6	1.97	.83	1.18	1.42	1.02	.59	2.95	2.20
CL-41-CHP	CL-42-CHP	3.94	.94	.63	1.57	1.46	.39	.83	.315	M8	2.56	.91	1.34	1.61	1.10	.79	3.43	2.48
CL-51-CHP	CL-52-CHP	5.12	1.10	.63	1.93	1.73	.55	.98	.394	M10	3.15	1.02	1.57	1.97	1.18	.79	3.43	2.80
CL-61-CHP	CL-62-CHP	6.30	1.34	.71	2.17	1.93	.59	1.06	.394	M10	3.54	1.10	1.77	2.20	1.18	.79	4.09	3.11