

Electric Drives
and Controls

Hydraulics

Linear Motion and
Assembly Technologies

Pneumatics

Service

Rexroth
Bosch Group

Subplates size 16 with porting pattern according to DIN 24340 form A, ISO 4401 and CETOP-RP 121 H

RE 45056/02.11
Replaces: 01.03

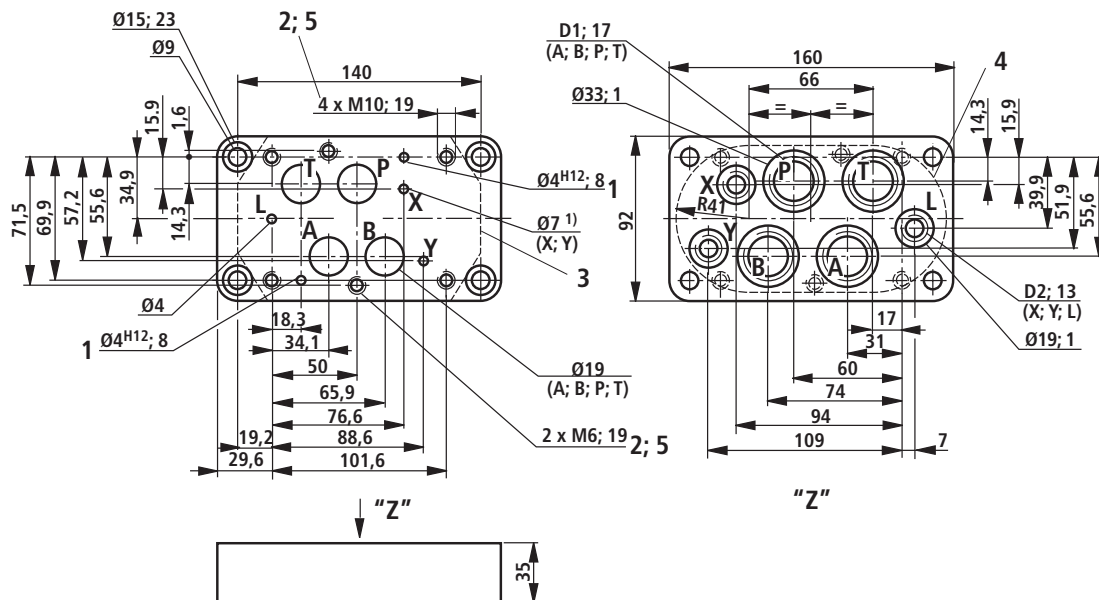
1/4

Maximum operating pressure 350 bar
Size 16

Table of contents

Contents	Page
Type G 172/01; G 172/02	2
Type G 174/01; G 174/02	3
Type G 174/08	4

Type G 172/01; G 172/02 (nominal dimensions in mm)



Type	Material no.	D1	D2	Weight in kg
G 172/01	R900424410	G 3/4	G 1/4	2.8
G 172/02	R900424411	M27 x 2	M14 x 1.5	2.8

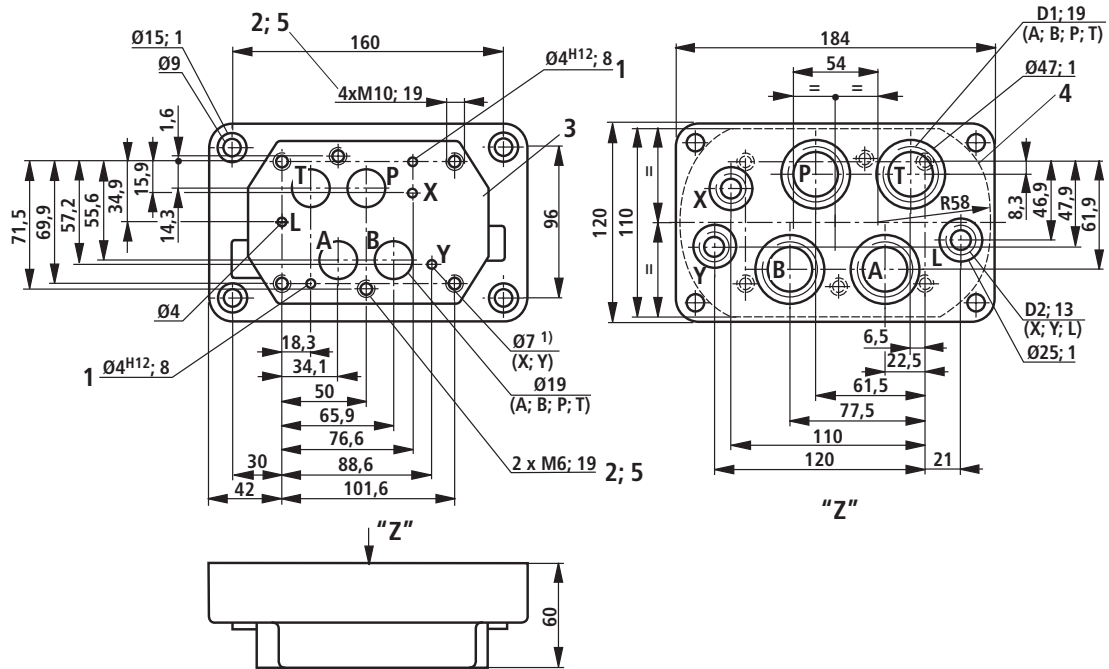
- 1 Bore for locating pin
- 2 Valve mounting bores
- 3 Valve mounting face
- 4 Front panel break-through
- 5 Valve mounting screws
4 hexagon socket head cap screws ISO 4762 - M10 - 10.9
2 hexagon socket head cap screws ISO 4762 - M6 - 10.9
(separate order)

Note on the valve mounting screws:

Length and tightening torque of the screws depend on the valve types and the sandwich plates that might be provided.

¹⁾ Maximum dimension

Type G 174/01; G 174/02 (nominal dimensions in mm)



Type	Material no.	D1	D2	Weight in kg
G 174/01	R900424413	G 1	G 1/4	5.5
G 174/02	R900424414	M33 x 2	M14 x 1.5	5.5

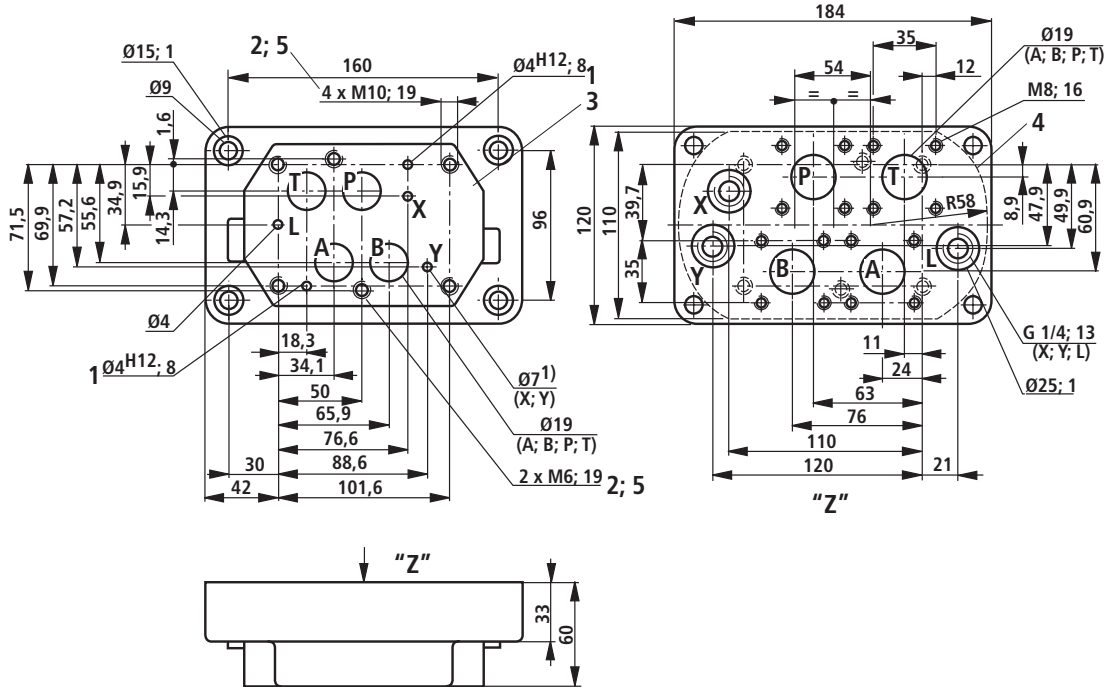
- 1 Bore for locating pin
- 2 Valve mounting bores
- 3 Valve mounting face
- 4 Front panel break-through
- 5 Valve mounting screws
4 hexagon socket head cap screws ISO 4762 - M10 - 10.9
2 hexagon socket head cap screws ISO 4762 - M6 - 10.9
(separate order)

Note on the valve mounting screws:

Length and tightening torque of the screws depend on the valve types and the sandwich plates that might be provided

¹⁾ Maximum dimension

Type G 174/08 (nominal dimensions in mm)



Connection flange for G 174/08

Operating pressure	Material no.
up to 250 bar	R900009271
up to 400 bar	R900009272

Type	Material no.	Weight in kg
G 174/08	R900429264	5.5

- 1 Bore for locating pin
 - 2 Valve mounting bores
 - 3 Valve mounting face
 - 4 Front panel break-through
 - 5 Valve mounting screws
- 4 hexagon socket head cap screws ISO 4762 - M10 - 10.9
2 hexagon socket head cap screws ISO 4762 - M6 - 10.9 (separate order)

Note on the valve mounting screws:

Length and tightening torque of the screws depend on the valve types and the sandwich plates that might be provided.

1) Maximum dimension

© This document, as well as the data, specifications and other information set forth in it, are the exclusive property of Bosch Rexroth AG. It may not be reproduced or given to third parties without its consent. The data specified above only serve to describe the product. No statements concerning a certain condition or suitability for a certain application can be derived from our information. The information given does not release the user from the obligation of own judgment and verification. It must be remembered that our products are subject to a natural process of wear and aging.