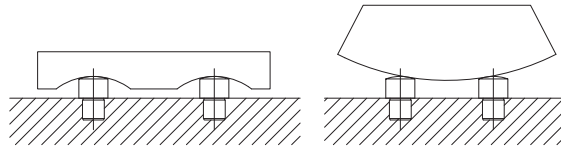


## SPHERICAL RADIUS LOCATOR BUTTONS

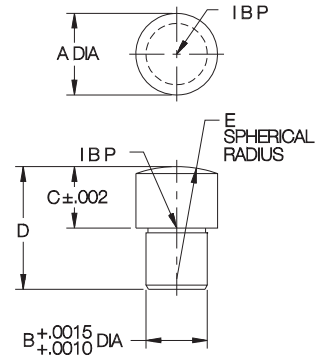
1144 STEEL, HEAT TREATED RC 40-45, BLACK OXIDE FINISH



Precision height locator with a spherical-radius head to minimize workpiece contact area. Close-tolerance shank allows press-fit installation in a reamed hole. Spherical-Radius Locator Buttons are extremely useful as supports, side locator pads, and jig feet.



PART NO.	B DIA	A DIA	C	D	E
CL-1-SLB	3/16	5/16	.1250	3/8	1/2
CL-2-SLB	1/4	3/8	.1875	1/2	5/8
CL-3-SLB			.1875	9/16	
CL-4-SLB	3/8	1/2	.2500	5/8	3/4
CL-5-SLB			.3750	3/4	
CL-6-SLB			.5000	7/8	

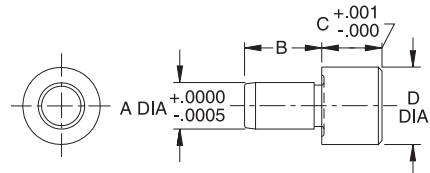
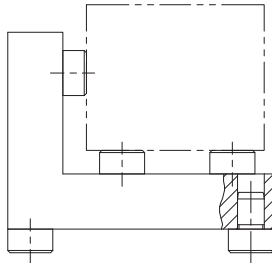


## REST BUTTONS

STEEL: 1144, HEAT TREATED RC 40-45 BLACK OXIDE FINISH  
STAINLESS STEEL: 300-SERIES



Precision height locator with a close-tolerance shank for installation in a reamed hole. Rest Buttons are extremely useful as supports, side locator pads, and jig feet. Available in steel or stainless steel.



### STEEL (USA)

PART NO.	A DIA		B	C		D DIA
	NOMINAL	ACTUAL		NOMINAL	ACTUAL	
CL-12-RB				1/4	.2500	
CL-13-RB	3/16	.1885	3/8	3/8	.3750	3/8
CL-14-RB				1/2	.5000	
CL-2-RB				1/4	.2500	
CL-3-RB	1/4	.2510	1/2	3/8	.3750	1/2
CL-1-RB				1/2	.5000	
CL-5-RB				1/4	.2500	
CL-6-RB				3/8	.3750	
CL-4-RB	3/8	.3760	5/8	1/2	.5000	5/8
CL-7-RB				5/8	.6250	
CL-8-RB				3/4	.7500	
CL-15-RB				3/8	.3750	
CL-9-RB	1/2	.5010	5/8	1/2	.5000	7/8
CL-16-RB				5/8	.6250	
CL-17-RB				3/8	.3750	
CL-10-RB	5/8	.6260	3/4	1/2	.5000	1
CL-18-RB				3/4	.7500	
CL-19-RB	3/4	.7515	7/8	1/2	.5000	1-1/4
CL-11-RB				5/8	.6250	

### STAINLESS STEEL (USA)

PART NO.	A DIA		B	C		D DIA
	NOMINAL	ACTUAL		NOMINAL	ACTUAL	
CL-26432				1/4	.2500	
CL-26433	3/16	.1885	1/4	3/8	.3750	3/8
CL-26434				1/2	.5000	
CL-26542	1/4	.2510	5/16	1/4	.2500	1/2
CL-26646	5/16	.3135	5/16	3/4	.7500	1/2

### STEEL (METRIC)

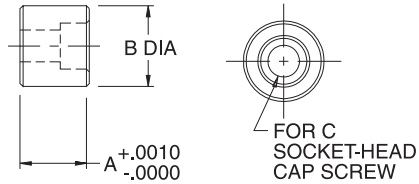
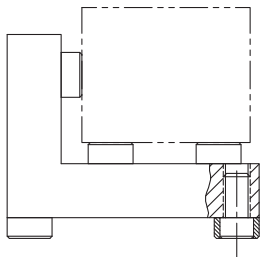
PART NO.	B DIA	A		C
		NOMINAL	ACTUAL	
CLM-605-RB	6mm	.2372	.31	5mm .1969
CLM-610-RB				10mm .3937 .39
CLM-805-RB				5mm .1969
CLM-810-RB	8mm	.3160	.39	10mm .3937
CLM-815-RB				15mm .5906
CLM-820-RB				20mm .7874
CLM-1010-RB				10mm .3937
CLM-1015-RB	10mm	.3947	.47	15mm .5906
CLM-1020-RB				20mm .7874

## JIG REST BUTTONS

12L14 STEEL, CARBURIZED-HARDENED, BLACK OXIDE FINISH



Precision height locator with a counterbored hole for mounting with a socket-head cap screw (not furnished). Jig Rest Buttons are extremely useful as supports, side locator pads, and jig feet.



### USA

PART NO.	B DIA	A		C
		NOMINAL	ACTUAL	
CL-24-JRB		1/8	.1250	#8 Flat Head*
CL-00-JRB	1/2	3/8	.3750	
CL-0-JRB		1/2	.5000	#10
CL-12-JRB		1/4	.2500	#10 Flat Head*
CL-13-JRB		3/8	.3750	
CL-1-JRB	5/8	1/2	.5000	
CL-14-JRB		5/8	.6250	1/4
CL-2-JRB		3/4	.7500	
CL-16-JRB		1	1.0000	
CL-17-JRB		3/8	.3750	1/4
CL-18-JRB		1/2	.5000	
CL-3-JRB	7/8	5/8	.6250	5/16
CL-19-JRB		3/4	.7500	
CL-20-JRB		1	1.0000	
CL-25-JRB		1/2	.5000	
CL-21-JRB		3/4	.7500	
CL-6-JRB	1-1/4	1	1.0000	3/8
CL-7-JRB		1-1/2	1.5000	
CL-8-JRB		2	2.0000	

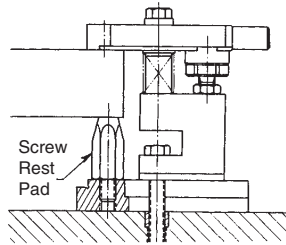
\* Countersunk for Flat-head screw these sizes only.

### METRIC

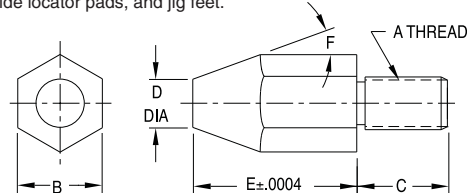
PART NO.	B DIA	A		C
		NOMINAL	ACTUAL	
CLM-1-JRB		10mm	.3937	M5
CLM-2A-JRB	.63	15mm	.5906	
CLM-4-JRB		10mm	.3937	
CLM-6A-JRB		15mm	.5906	
CLM-7A-JRB	.79	20mm	.7874	M6
CLM-8-JRB		25mm	.9843	
CLM-11A-JRB		15mm	.5906	
CLM-12A-JRB	.98	20mm	.7874	M8
CLM-13-JRB		25mm	.9843	
CLM-14A-JRB		20mm	.7874	
CLM-15-JRB		25mm	.9843	
CLM-16A-JRB	1.26	30mm	1.1811	M10
CLM-17A-JRB		50mm	1.9685	

## SCREW REST PADS

12L14 STEEL, CARBURIZED-HARDENED, BLACK OXIDE FINISH



Precision height locator with a threaded shank for installation in a tapped hole. Cone shape provides a small contact area in combination with a large stable base. Screw Rest Pads are extremely useful as supports, side locator pads, and jig feet.



### USA

PART NO.	A	B	C	D DIA	E	F				
CL-MF25-4801	5/16-18	3/4	5/8	5/16	.2500	75°				
CL-MF25-4802					.3750	60°				
CL-MF25-4803					.5000	35°				
CL-MF25-4804					.7500	25°				
CL-MF25-4805					1.0000	20°				
CL-MF25-4806					1.2500	15°				
CL-MF25-4807					1.5000					
CL-MF40-4801					1/2-13	7/8	15/16	1/2	.2500	75°
CL-MF40-4802									.3750	60°
CL-MF40-4803									.5000	35°
CL-MF40-4804	.7500	25°								
CL-MF40-4805	1.0000	20°								
CL-MF40-4806	1.2500									
CL-MF40-4807	1.5000	15°								
CL-MF40-4808	2.0000									
CL-MF50-4801	5/8-11	1	1-1/4	5/8					.2500	75°
CL-MF50-4802									.3750	60°
CL-MF50-4803					.5000	35°				
CL-MF50-4804					.7500	25°				
CL-MF50-4805					1.0000	20°				
CL-MF50-4806					1.2500					
CL-MF50-4807					1.5000	15°				
CL-MF50-4808					2.0000					

### METRIC

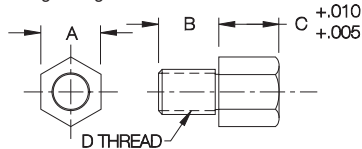
PART NO.	A	B	C	D DIA	E	F
CL-MF08-4801	M8	17mm	.63	.31	.1969 (5mm)	75°
CL-MF08-4802					.3937 (10mm)	60°
CL-MF08-4803					.5906 (15mm)	35°
CL-MF08-4804					.7874 (20mm)	25°
CL-MF08-4805					.9843 (25mm)	20°
CL-MF08-4806					1.1811 (30mm)	15°
CL-MF08-4808					1.5748 (40mm)	
CL-MF12-4801					M12	19mm
CL-MF12-4802	.3937 (10mm)	60°				
CL-MF12-4803	.5906 (15mm)	35°				
CL-MF12-4804	.7874 (20mm)	25°				
CL-MF12-4805	.9843 (25mm)	20°				
CL-MF12-4806	1.1811 (30mm)	15°				
CL-MF12-4808	1.5748 (40mm)					
CL-MF12-4810	1.9685 (50mm)					
CL-MF16-4802	M16	24mm	1.26	.63	.3937 (10mm)	60°
CL-MF16-4803					.5906 (15mm)	35°
CL-MF16-4804					.7874 (20mm)	25°
CL-MF16-4805					.9843 (25mm)	20°
CL-MF16-4806					1.1811 (30mm)	15°
CL-MF16-4808					1.5748 (40mm)	
CL-MF16-4810					1.9685 (50mm)	

## SCREW REST BUTTONS

12L14 STEEL, CARBURIZED-HARDENED, BLACK OXIDE FINISH



Threaded rest button with a hex head machined .005 over nominal height for finish grinding after installation.



### USA

PART NO.	A	B	C		D
			NOMINAL	ACTUAL	
CL-1-SRB	3/8	3/8	1/4	.2500	1/4-20
CL-2-SRB			3/8	.3750	
CL-3-SRB			1/2	.5000	
CL-4-SRB			3/4	.7500	
CL-5-SRB			1	1.0000	
CL-6-SRB	1/2	1/2	1/4	.2500	3/8-16
CL-7-SRB			3/8	.3750	
CL-8-SRB			1/2	.5000	
CL-9-SRB			3/4	.7500	
CL-10-SRB			1	1.0000	
CL-11-SRB	5/8	5/8	1/4	.2500	1/2-13
CL-12-SRB			3/8	.3750	
CL-13-SRB			1/2	.5000	
CL-14-SRB			5/8	.6250	
CL-15-SRB			3/4	.7500	
CL-16-SRB			1	1.0000	

### METRIC

PART NO.	A	B	C		D
			NOMINAL	ACTUAL	
CLM-605-SRB	10mm	.39	5mm	.1969	M6
CLM-610-SRB			10mm	.3937	
CLM-615-SRB			15mm	.5906	
CLM-620-SRB			20mm	.7874	
CLM-625-SRB			25mm	.9843	
CLM-1005-SRB	13mm	.51	5mm	.1969	M10
CLM-1010-SRB			10mm	.3937	
CLM-1015-SRB			15mm	.5906	
CLM-1020-SRB			20mm	.7874	
CLM-1025-SRB			25mm	.9843	
CLM-1205-SRB	17mm	.63	5mm	.1969	M12
CLM-1210-SRB			10mm	.3937	
CLM-1215-SRB			15mm	.5906	
CLM-1220-SRB			20mm	.7874	
CLM-1225-SRB			25mm	.9843	

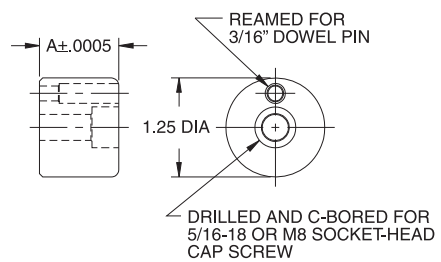
## DRILL JIG FEET

12L14 STEEL, CARBURIZED-HARDENED, BLACK OXIDE FINISH



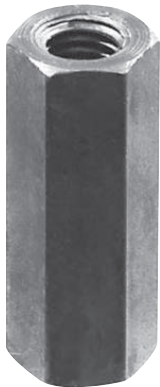
Precision jig foot available in four heights. Dowel in place to prevent rotation.

A	A
CL-1-DJF	.5000
CL-2-DJF	1.0000
CL-3-DJF	2.0000
CL-4-DJF	3.0000

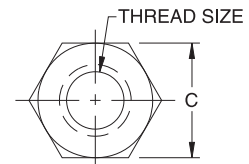
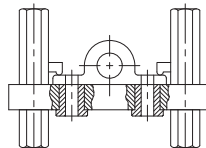


## DOUBLE-END JIG FEET

12L14 STEEL, CARBURIZED-HARDENED, BLACK OXIDE FINISH

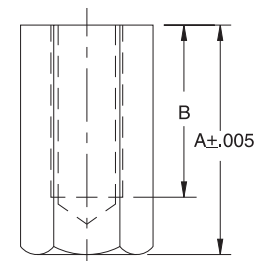


Tapped jig foot commonly used in pairs with a stud.



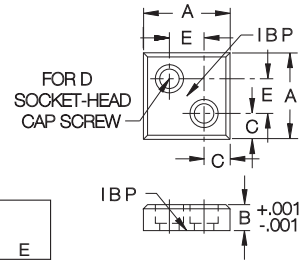
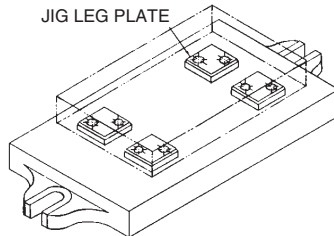
USA

PART NO.	THREAD SIZE	A	B	C
CL-1-DEJF	5/8-11	1.000	5/8	1
CL-3-DEJF		1.500	1	
CL-5-DEJF		2.000		
CL-7-DEJF		3.000		
CL-9-DEJF		4.000	1-1/2	
CL-10-DEJF		6.000		
CL-11-DEJF		8.000		



## JIG LEG PLATES

1020 STEEL, CARBURIZED-HARDENED, BLACK OXIDE FINISH

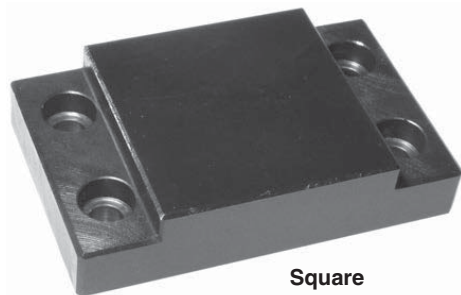


Precision ground pad with a large contact area. Can be used either as a jig foot, or as a rest pad for heavy workpieces. Choice of three sizes.

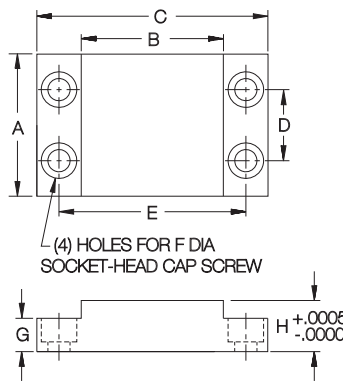
PART NO.	A	B	C	D	E
CL-1-JLP	1	.3125	5/16	#10-32 OR M5	3/8
CL-2-JLP	1-1/4	.3750	3/8	1/4-20 OR M6	1/2
CL-3-JLP	1-1/2	.4375	7/16		5/8

## HEAVY-DUTY REST PADS

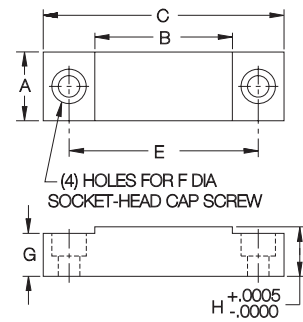
1018 STEEL, CARBURIZED-HARDENED, BLACK OXIDE FINISH



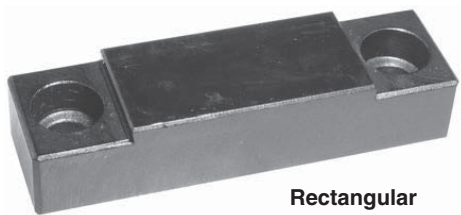
Square



Square



Rectangular



Rectangular

Large, precision rest pad for heavy-duty applications. These hardened pads have a large, durable contact surface to support heavy workpieces, or to serve as wear plates. Choice of four sizes.

### SQUARE

PART NO.	A	B	C	D	E	F	G	H
CL-1-HDRP	2	2	3-1/4	1	2-1/2	1/4-20 OR M6	1/2	.7500

### RECTANGULAR

CL-2-HDRP	2	3-1/2	—	2-3/4				
CL-3-HDRP	1	3	4-1/2	—	3-3/4	5/16-18 OR M8	5/8	.7500
CL-4-HDRP	4	5-1/2	—	4-3/4				