

BALL KNOBS

BLACK PHENOLIC, THERMOPLASTIC, OR CUSHION GRIP PLASTIC WITH BRASS INSERT

Phenolic — Tapped



3/8-16 CL-852-PB
3/8-24 CL-854-PB
1/2-13 CL-872-PB
5/8-18 CL-882-PB
M10 CLM-852-PB
M12 CLM-872-PB
M16 CLM-882-PB



3/8-16 CL-752-PB
1/2-13 CL-772-PB
M10 CLM-752-PB
M12 CLM-772-PB



1/4-20 CL-632-PB
5/16-18 CL-642-PB
3/8-16 CL-652-PB
3/8-24 CL-654-PB
1/2-13 CL-672-PB
1/2-20 CL-674-PB
M10 CLM-652-PB
M12 CLM-672-PB



1/4-20 CL-532-PB
5/16-18 CL-542-PB
3/8-16 CL-552-PB
3/8-24 CL-554-PB
M8 CLM-542-PB
M10 CLM-552-PB



#10-32 CL-424-PB
1/4-20 CL-432-PB
1/4-28 CL-234-PB
5/16-18 CL-442-PB
5/16-24 CL-444-PB
3/8-16 CL-452-PB
M6 CLM-432-PB
M8 CLM-442-PB



#8-32 CL-212-PB
#10-32 CL-224-PB
1/4-20 CL-232-PB
M5 CLM-222-PB
M6 CLM-232-PB

Phenolic — Tapped Recessed Top



3/8-16 CL-856-PB
3/8-24 CL-858-PB
1/2-13 CL-876-PB

Durable multi-purpose knob, suitable for many applications. Molded-in brass insert provides superior thread strength. Choice of seven ball sizes. The largest size is available with a recessed top (1-1/4" dia) for adding custom decals or inlays. Non-standard thread sizes, molded-in studs, or special colors (thermoplastic and cushion grip only) are available in quantities of 500 and above. Note: Catalog photos are actual size.

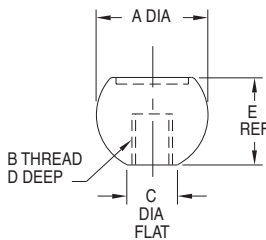
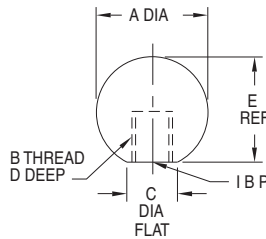
Choose From Three Materials

1. Phenolic plastic — glossy smooth finish, extremely hard, electrical insulator, operating temperatures to 300°F, resistant to oils and most common chemicals.
2. Thermoplastic — textured surface for improved gripping, excellent impact resistance, operating temperatures to 150°F.
3. Cushion Grip — unique plastic that feels soft to the touch, matte finish, comfortable yet rugged, excellent impact resistance, operating temperatures to 150°F, excellent gripability even when wet or oily, absorbs vibration.

PHENOLIC — TAPPED (USA & METRIC)

PART NO.	A DIA	B	C DIA	D	E
CL-212-PB		#8-32			
CL-224-PB		#10-32		5/16	
CL-232-PB	3/4	1/4-20	3/8	3/8	45/64
CLM-222-PB		M5		5/16	
CLM-232-PB		M6		3/8	
CL-424-PB		#10-32		5/16	
CL-432-PB		1/4-20			
CL-234-PB		1/4-28			
CL-442-PB	1	5/16-18	1/2	7/16	31/32
CL-444-PB		5/16-24			
CL-452-PB		3/8-16			
CLM-432-PB		M6			
CLM-442-PB		M8			
CL-532-PB		1/4-20			
CL-542-PB		5/16-18			
CL-552-PB	1-3/16	3/8-16	9/16	1/2	1-1/8
CL-554-PB		3/8-24			
CLM-542-PB		M8			
CLM-552-PB		M10			
CL-632-PB		1/4-20		7/16	
CL-642-PB		5/16-18			
CL-652-PB	1-3/8	3/8-16	5/8	1/2	1-19/64
CL-654-PB		3/8-24			
CL-672-PB		1/2-13		5/8	
CL-674-PB		1/2-20			
CLM-652-PB		M10		1/2	
CLM-672-PB		M12		5/8	
CL-752-PB		3/8-16		1/2	
CL-772-PB	1-5/8	1/2-13	11/16	5/8	1-37/64
CLM-752-PB		M10		1/2	
CLM-772-PB		M12		5/8	
CL-852-PB		3/8-16		1/2	
CL-854-PB		3/8-24			
CL-872-PB		1/2-13		5/8	
CL-882-PB*	1-7/8	5/8-18	3/4	7/8	1-51/64
CLM-852-PB		M10		1/2	
CLM-872-PB		M12		5/8	
CLM-882-PB		M16		3/4	

* This size is solid plastic, without a brass insert.



PHENOLIC — TAPPED RECESSED TOP (USA)

CL-856-PB		3/8-16			
CL-858-PB	1-7/8	3/8-24	3/4	1/2	1-15/32
CL-876-PB		1/2-13		5/8	

BALL KNOBS

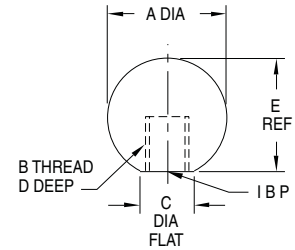
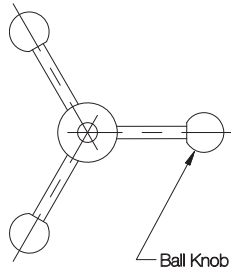
BLACK PHENOLIC, THERMOPLASTIC, OR CUSHION-GRIP PLASTIC WITH BRASS INSERT

Thermoplastic — Tapped



1/4-20 CL-6320-PB
5/16-18 CL-6420-PB
3/8-16 CL-6520-PB
1/2-13 CL-6720-PB

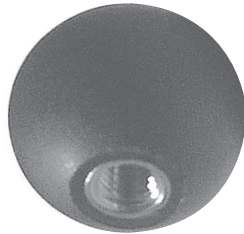
Ball Knobs are now available in three materials: phenolic plastic (see page 134), thermoplastic, and cushion-grip plastic.



THERMOPLASTIC — TAPPED (USA)

PART NO.	A DIA	B	C DIA	D	E
CL-6320-PB	1-1/2	1/4-20	5/8	5/8	1-15/64
CL-6420-PB		5/16-18			
CL-6520-PB		3/8-16			
CL-6720-PB		1/2-13			

Cushion Grip — Tapped



1/4-20 CL-6325-PB
5/16-18 CL-6425-PB
3/8-16 CL-6525-PB
1/2-13 CL-6725-PB

CUSHION GRIP — TAPPED (USA)

PART NO.	A DIA	B	C DIA	D	E
CL-6325-PB	1-1/2	1/4-20	5/8	5/8	1-15/64
CL-6425-PB		5/16-18			
CL-6525-PB		3/8-16			
CL-6725-PB		1/2-13			

OVAL BALL KNOBS

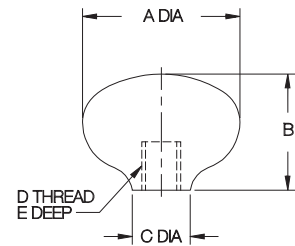
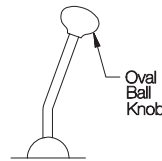
BLACK PHENOLIC PLASTIC WITH BRASS INSERT

Phenolic — Tapped



3/8-16 CL-852-OBK
3/8-24 CL-854-OBK
1/2-13 CL-872-OBK

1/4-20 CL-532-OBK
5/16-18 CL-542-OBK
3/8-16 CL-552-OBK



PHENOLIC — TAPPED (USA)

PART NO.	A DIA	B	C DIA	D	E
CL-532-OBK	1-1/8	1-7/16	1/2	1/4-20	7/16
CL-542-OBK				5/16-18	
CL-552-OBK				3/8-16	
CL-852-OBK				3/8-16	
CL-854-OBK	2-1/32	1-1/2	3/4	3/8-24	1/2
CL-872-OBK				1/2-13	5/8

Comfortable-grip ball knobs that are ideal for shift levers, control levers and push/pull rods. Molded-in brass insert provides superior thread strength. Choice of two shapes. Non-standard thread sizes or molded-in studs are available in quantities of 500 and above. Note: Catalog photos are actual size.

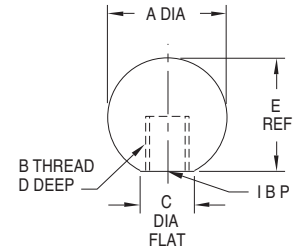
BALL KNOBS

1018 STEEL, BLACK OXIDE FINISH, OR 316 STAINLESS STEEL

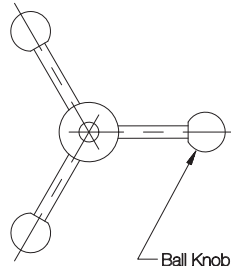


Steel — Tapped

1/4-20	CL-632-SBK
5/16-18	CL-642-SBK
3/8-16	CL-652-SBK
1/2-13	CL-672-SBK
M6	CLM-632-SBK
M8	CLM-642-SBK
M10	CLM-652-SBK
M12	CLM-672-SBK



Heavy-duty knob handle made of steel with a black oxide finish. This durable, multi-purpose knob is suitable for many applications. Ideal when added weight is desirable for easier lever actuation. Note: Catalog photo is actual size.



STEEL — TAPPED (USA)

PART NO.	A DIA	B	C DIA	D	E
CL-632-SBK		1/4-20		9/16	
CL-642-SBK	1-1/2	5/16-18	5/8		1-7/16
CL-652-SBK		3/8-16		5/8	
CL-672-SBK		1/2-13			

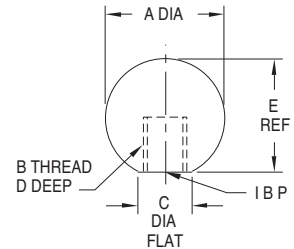
STEEL — TAPPED (METRIC)

PART NO.	A DIA	B	C DIA	D	E
CLM-632-SBK		M6		9/16	
CLM-642-SBK	1-1/2	M8	5/8		1-7/16
CLM-652-SBK		M10		5/8	
CLM-672-SBK		M12			



Stainless Steel — Tapped

1/4-20	CL-632-SBK-S
5/16-18	CL-642-SBK-S
3/8-16	CL-652-SBK-S
1/2-13	CL-672-SBK-S
M6	CLM-632-SBK-S
M8	CLM-642-SBK-S
M10	CLM-652-SBK-S
M12	CLM-672-SBK-S



Heavy-duty knob handle made of type 316 stainless steel for excellent corrosion resistance. This durable, multi-purpose knob is suitable for many applications, including marine and chemical environments. Ideal when added weight is desirable for easier lever actuation. Attractive polished finish. Note: Catalog photo is actual size.

STAINLESS STEEL — TAPPED (USA)

PART NO.	A DIA	B	C DIA	D	E
CL-632-SBK-S		1/4-20		9/16	
CL-642-SBK-S	1-1/2	5/16-18	5/8		1-7/16
CL-652-SBK-S		3/8-16		5/8	
CL-672-SBK-S		1/2-13			

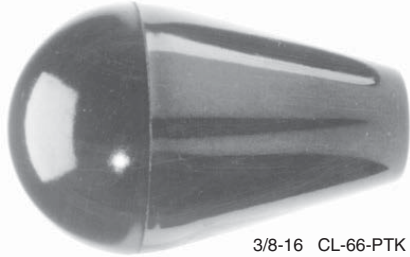
STAINLESS STEEL — TAPPED (METRIC)

PART NO.	A DIA	B	C DIA	D	E
CLM-632-SBK-S		M6		9/16	
CLM-642-SBK-S	1-1/2	M8	5/8		1-7/16
CLM-652-SBK-S		M10		5/8	
CLM-672-SBK-S		M12			

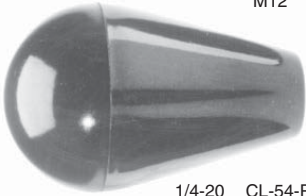
OVAL TAPERED KNOBS

BLACK PHENOLIC OR CUSHION-GRIP PLASTIC WITH BRASS INSERT

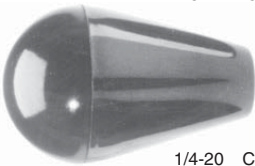
Phenolic — Tapped



3/8-16 CL-66-PTK
1/2-13 CL-68-PTK
M10 CLM-610-PTK
M12 CLM-612-PTK



1/4-20 CL-54-PTK
5/16-18 CL-55-PTK
M8 CLM-58-PTK

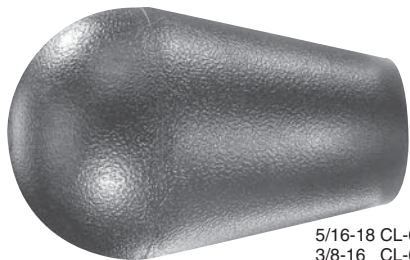


1/4-20 CL-44-PTK
5/16-18 CL-45-PTK
3/8-16 CL-46-PTK
M6 CLM-46-PTK



#10-32 CL-23-PTK
1/4-20 CL-24-PTK
M6 CLM-26-PTK

Cushion Grip — Tapped



5/16-18 CL-650-PTK
3/8-16 CL-660-PTK

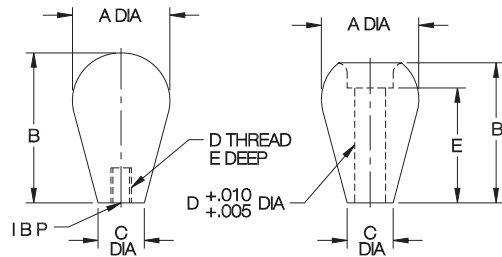
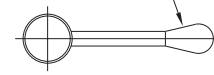
Attractive design suitable for control levers and push/pull rods. Molded-in brass insert provides superior thread strength. The solid-plastic through-hole version can be used with a Shoulder Screw as a revolving crank handle. Choice of four knob sizes. Non-standard thread sizes, molded-in studs, or special colors (cushion grip only) are available in quantities of 500 and above. Note: Catalog photos are actual size.

Phenolic — Through Hole



3/8 Dia CL-560-PTK

Oval Tapered Knob



PHENOLIC — TAPPED (USA & METRIC)

PART NO.	A DIA	B	C DIA	D	E
CL-23-PTK				#10-32	5/16
CL-24-PTK*	3/4	1-1/4	3/8	1/4-20	7/16
CLM-26-PTK*				M6	
CL-44-PTK				1/4-20	
CL-45-PTK	1	1-5/8	1/2	5/16-18	7/16
CL-46-PTK				3/8-16	
CLM-46-PTK				M6	
CL-54-PTK				1/4-20	
CL-55-PTK	1-3/16	1-7/8	9/16	5/16-18	7/16
CLM-58-PTK				M8	
CL-66-PTK				3/8-16	1/2
CL-68-PTK	1-5/8	2-1/2	7/8	1/2-13	5/8
CLM-610-PTK				M10	1/2
CLM-612-PTK				M12	5/8

PHENOLIC — THROUGH HOLE

CL-560-PTK*	1-3/16	1-3/4	9/16	.375	1-7/16
-------------	--------	-------	------	------	--------

CUSHION GRIP — TAPPED (USA)

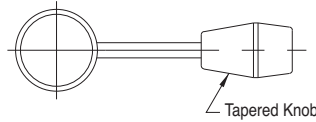
CL-650-PTK	1-5/8	2-1/2	7/8	5/16-18	5/8
CL-660-PTK				3/8-16	

* These sizes are solid plastic, without a brass insert.

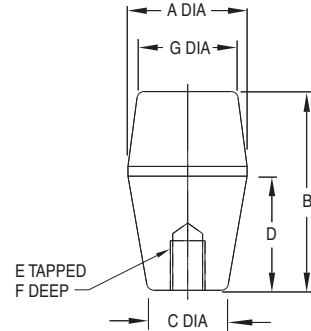
TAPERED KNOBS

BLACK CUSHION-GRIP PLASTIC WITH BRASS INSERT

Cushion Grip — Tapped



5/16-18 CL-655-TAPK
3/8-16 CL-665-TAPK
1/2-13 CL-685-TAPK



Attractive square design, ideal for lever handles. Made from Cushion Grip plastic, a unique material that feels soft to the touch, comfortable yet rugged. Textured non-slip, non-glare finish. Molded-in brass insert provides superior thread strength. Non-standard thread sizes, molded-in studs, or special colors are available in quantities of 500 and above. Note: Catalog photo is actual size.

CUSHION GRIP — TAPPED (USA)

PART NO.	A DIA	B	C DIA	D	E	F	G DIA
CL-655-TAPK					5/16-18	3/4	
CL-665-TAPK	1-1/2	2-1/2	15/16	1-1/2	3/8-16	5/8	1-1/8
CL-685-TAPK					1/2-13		

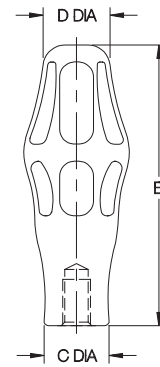
PALM-GRIP HANDLES

BLACK THERMOPLASTIC WITH BRASS INSERT

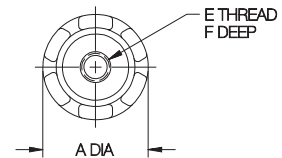
Thermoplastic — Tapped



1/4-20 CL-632-PGH
5/16-18 CL-642-PGH
3/8-16 CL-652-PGH

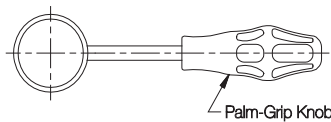


This unique, ergonomically designed handle provides an extremely comfortable grip. Greatly reduces stress on hands, wrists, and arms to help eliminate the risk of repetitive-motion disorders. Textured non-slip, non-glare finish. Molded-in brass insert provides superior thread strength. Non-standard thread sizes, molded-in studs, or special colors are available in quantities of 500 and above. Note: Catalog photo is actual size.



THERMOPLASTIC — TAPPED (USA)

PART NO.	A DIA	B	C DIA	D DIA	E	F
CL-632-PGH					1/4-20	7/8
CL-642-PGH	1-3/8	3-3/4	7/8	7/8	5/16-18	5/8
CL-652-PGH					3/8-16	



KNOB HANDLES

BLACK CUSHION-GRIP PLASTIC. TAPPED VERSION WITH BRASS INSERT



5/16-18 CL-855-KH
3/8-16 CL-865-KH
3/8 DIA CL-866-KH

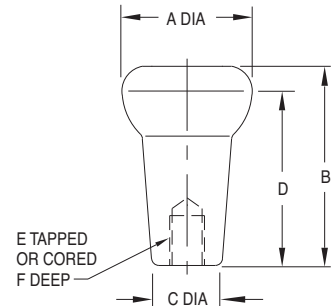


5/16-18 CL-655-KH
3/8-16 CL-665-KH
3/8 DIA CL-666-KH

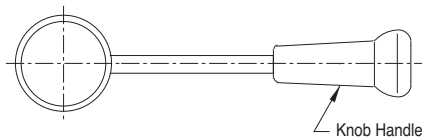


5/16-18 CL-455-KH
3/8-16 CL-465-KH
3/8 DIA CL-466-KH

**Cushion Grip —
Tapped or Cored**



Tapered handle with a knob end for secure gripping. Made from Cushion-Grip plastic, a unique material that feels soft to the touch, comfortable yet rugged. Non-slip, non-glare finish. Molded-in brass insert on the tapped version provides superior thread strength. Optionally available with a plain cored hole to press fit on a shaft. The cored hole is somewhat undersize to grip tightly on a nominal-size shaft without requiring pinning. Non-standard thread sizes, molded-in studs, or special colors are available in quantities of 500 and above. Note: Catalog photos are actual size.



Combination knob and tapered handle. The knob end helps prevent operator's hand from sliding off the handle.

CUSHION GRIP — TAPPED (USA)

PART NO.	A DIA	B	C DIA	D	E	F
CL-455-KH	1-3/8	2-1/8	13/16	11-1/4	5/16-18	5/8
CL-465-KH					3/8-16	
CL-655-KH	1-5/8	2-1/2	7/8	1-1/2	5/16-18	7/16
CL-665-KH						
CL-855-KH	1-1/2	4-3/8	3-1/2	3-1/2	5/16-18	7/16
CL-865-KH						

CUSHION GRIP — CORED

PART NO.	A DIA	B	C DIA	D	E		F
					FOR SHAFT DIA	ACTUAL DIA	
CL-466-KH	1-3/8	2-1/8	13/16	1-1/4			
CL-666-KH	1-5/8	2-1/2	7/8	1-1/2	3/8	.312-.327	1
CL-866-KH	1-1/2	4-3/8	7/8	3-1/2			

TAPERED HANDLES

BLACK PHENOLIC PLASTIC WITH BRASS INSERT



1/2-13 CL-3-PH
M10 CLM-10-PH



3/8-16 CL-2-PH
M8 CLM-8-PH



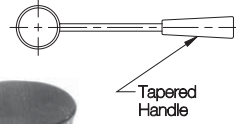
1/4-20 CL-1-PH
5/16-18 CL-15-PH
M6 CLM-6-PH
M8 CLM-18-PH



1/4-20 CL-0-PH
5/16-18 CL-05-PH
M6 CLM-06-PH
M8 CLM-08-PH

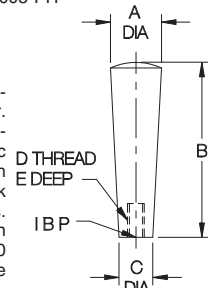


#10-32 CL-00-PH
M5 CLM-005-PH



Phenolic — Tapped

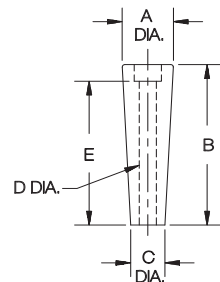
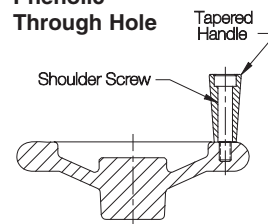
Heavy-duty design that makes an excellent grasp handle or machine shift lever. Molded-in brass insert provides superior thread strength. The solid-plastic through-hole version can be used with a Shoulder Screw as a revolving crank handle. Choice of five handle sizes. Non-standard thread sizes or molded-in studs are available in quantities of 500 and above. Note: Catalog photos are actual size.



PHENOLIC — TAPPED (USA & METRIC)

PART NO.	A DIA	B	C DIA	D	E
CL-00-PH	3/4	7/8	3/8	#10-32	5/16
CLM-005-PH				M5	
CL-0-PH	1	1-1/4	1/2	1/4-20	7/16
CL-05-PH				5/16-18	
CLM-06-PH				M6	3/8
CLM-08-PH				M8	
CL-1-PH	1	2-5/8	5/8	1/4-20	7/16
CL-15-PH				5/16-18	
CL-16-PH				3/8-16	1/2
CLM-6-PH				M6	
CLM-18-PH				M8	7/16
CL-2-PH	1-1/8	3-7/8	3/4	3/8-16	5/8
CLM-8-PH				M8	7/16
CL-3-PH	1-3/8	4-1/2	1	1/2-13	2
CLM-10-PH				M10	

Phenolic — Through Hole



PHENOLIC — THROUGH HOLE

PART NO.	A DIA	B	C DIA	D		E
				NOMINAL	ACTUAL	
CL-10-PH*	1	2-9/16	5/8	1/4	.251/.256	5/8
CL-20-PH*	1-1/8	3-11/16	3/4	3/8	.380/.385	2-5/8
CL-30-PH*	1-3/8	4-3/32	1	3/8	.380/.390	2-5/8

* This size is solid plastic, without a brass insert.



3/8 Dia CL-30-PH



3/8 Dia CL-20-PH



1/4 Dia CL-10-PH

PULL KNOBS

BLACK PHENOLIC PLASTIC WITH BRASS INSERT

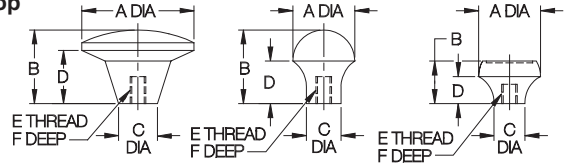


1/4-20 CL-632-PK
5/16-18 CL-642-PK
3/8-16 CL-652-PK
M8 CLM-642-PK



#10-32 CL-424-PK
1/4-20 CL-432-PK
M5 CLM-422-PK
M6 CLM-432-PK

Phenolic—Tapped
Flat Top



Versatile knob with an enlarged head for pulling, pushing, or lifting. Molded-in brass insert provides superior thread strength. Choice of three types, in two sizes each. Non-standard thread sizes or molded-in studs are available in quantities of 500 and above. Note: Catalog photos are actual size.



3/8-24 CL-654-PKO



#10-32 CL-424-PKO
1/4-20 CL-432-PKO
M5 CLM-422-PKO
M6 CLM-432-PKO

Phenolic—Tapped
Oval Top

PHENOLIC — TAPPED, FLAT TOP (USA & METRIC)

PART NO.	A DIA	B	C DIA	D	E	F
CL-424-PK					#10-32	5/16
CL-432-PK	1-3/8	7/8	5/8	5/8	1/4-20	7/16
CLM-422-PK					M5	5/16
CLM-432-PK					M6	7/16
CL-632-PK					1/4-20	7/16
CL-642-PK	1-13/16	1-3/16	5/8	7/8	5/16-18	
CL-652-PK					3/8-16	1/2
CLM-642-PK					M8	



#10-32 CL-424-PKR
1/4-20 CL-432-PKR



#6-32 CL-202-PKR
#8-32 CL-212-PKR
#10-32 CL-224-PKR
1/4-20 CL-232-PKR

Phenolic—Tapped
Recessed Top

PHENOLIC — TAPPED, OVAL TOP (USA & METRIC)

PART NO.	A DIA	B	C DIA	D	E	F
CL-424-PKO					#10-32	5/16
CL-432-PKO	1	1-3/16	9/16	11/16	1/4-20	7/16
CLM-422-PKO					M5	5/16
CLM-432-PKO					M6	7/16
CL-654-PKO	1-5/8	1	5/8	3/8	3/8-24	1/2

PHENOLIC — TAPPED, RECESSED TOP (USA)

PART NO.	A	B	C DIA	D	E	F
CL-202-PKR					#6-32	
CL-212-PKR					#8-32	
CL-224-PKR	3/4	3/4	1/2	21/32	#10-32	5/16
CL-232-PKR					1/4-20	
CL-424-PKR	1	11/16	1/2	7/16	#10-32	5/16
CL-432-PKR					1/4-20	

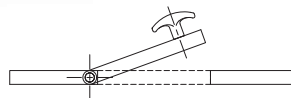
T HANDLES

BLACK PHENOLIC PLASTIC WITH BRASS INSERT

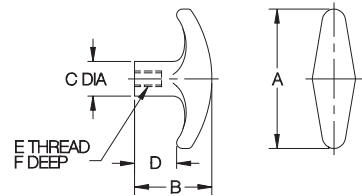


Phenolic—Tapped

#10-32 CL-424-TH
1/4-20 CL-432-TH
1/4-28 CL-434-TH
5/16-18 CL-442-TH
M5 CLM-422-TH
M6 CLM-432-TH
M8 CLM-442-TH



Easy-gripping handle for push/pull applications, such as release latches and cabinet doors. Molded-in brass insert provides superior thread strength. Non-standard thread sizes or molded-in studs are available in quantities of 500 and above. Note: Catalog photo is actual size.

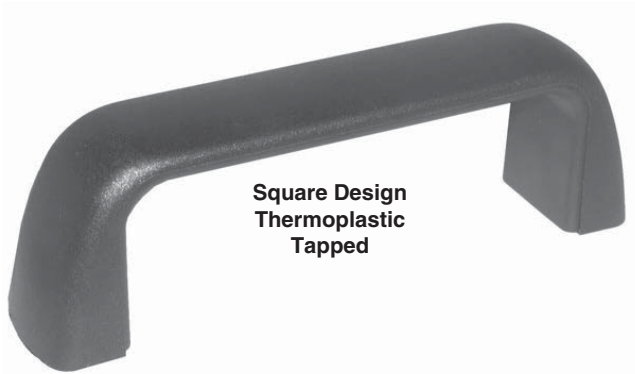


PHENOLIC — TAPPED (USA & METRIC)

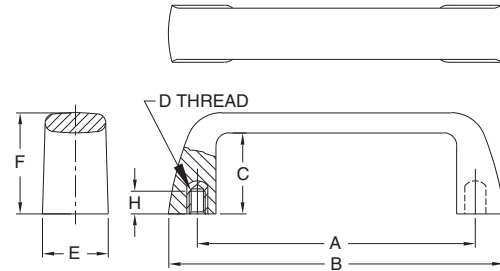
PART NO.	A	B	C DIA	D	E	F
CL-424-TH					#10-32	5/16
CL-432-TH					1/4-20	
CL-434-TH					1/4-28	7/16
CL-442-TH	2-1/4	1-1/4	9/16	11/16	5/16-18	
CLM-422-TH					M5	5/16
CLM-432-TH					M6	7/16
CLM-442-TH					M8	

PULL HANDLES

BLACK THERMOPLASTIC WITH BRASS INSERT



**Square Design
Thermoplastic
Tapped**



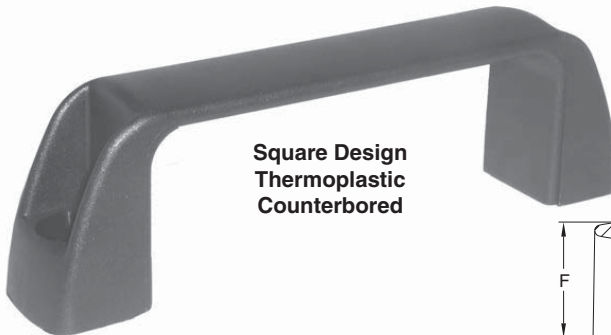
Attractive, modern-design handle that provides a comfortable grip with good ergonomic features. Excellent durability. Textured non-slip, non-glare finish. Molded-in brass insert provides superior thread strength. Black fiber-reinforced nylon thermoplastic (textured surface for secure gripping, excellent impact resistance, operating temperatures to 230°F). Choice of two handle sizes, available with either USA or metric threads.

TAPPED (USA)

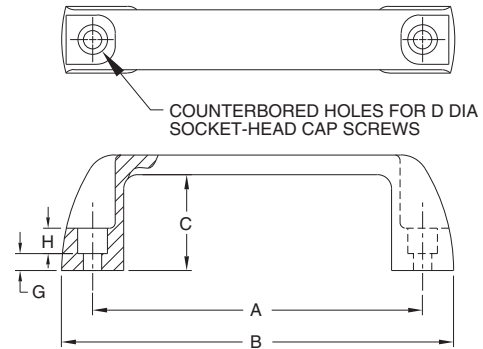
PART NO.	A	B	C	D	E	F	H
CL-105-PHS-4	4.13	4.76	1.14	1/4-20	1.02	1.46	.35
CL-117-PHS-5	4.61	5.24	1.26	5/16-18		1.57	

TAPPED (METRIC)

PART NO.	A	B	C	D	E	F	H
CLM-105-PHS-6	4.13	4.76	1.14	M6	1.02	1.46	.35
CLM-117-PHS-8	4.61	5.24	1.26	M8		1.57	



**Square Design
Thermoplastic
Counterbored**



Attractive, modern-design handle that provides a comfortable grip with good ergonomic features. Excellent durability. Textured non-slip, non-glare finish. Counterbored for Socket-Head Cap Screws. Choice of four handle sizes. Black fiber-reinforced nylon thermoplastic (textured surface for secure gripping, excellent impact resistance, operating temperatures to 230°F).

COUNTERBORED

PART NO.	A	B	C	D DIA	E	F	G	H
CL-94-PHSC-4	3.68	4.41	1.18	1/4 or M6	.83	1.42	.24	.28
CL-117-PHSC-5	4.61	5.47	1.34		1.02	1.61	.24	
CL-132-PHSC-5	5.20	6.14	1.46	5/16 or M8	1.06	1.77	.28	.35
CL-179-PHSC-5	7.05	8.03	1.65		1.10	1.97	.31	

PULL HANDLES

ALUMINUM, BLACK POWDER-COATED FINISH, OR 304 STAINLESS STEEL

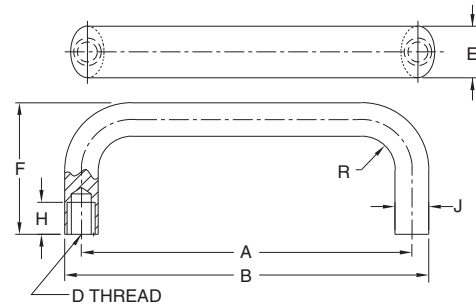


**Rounded Design
Aluminum
Tapped**



**Rounded Design
Stainless Steel
Tapped**

Attractive, modern-design aluminum handle provides a comfortable grip with good ergonomic features. Durable black powder-coated pebble finish. Tapped holes for mounting. Choice of four handle sizes, available with either USA or metric threads. Also available in stainless steel, shot blasted with a satin finish (two sizes).



ALUMINUM — TAPPED (USA)

PART NO.	A	B	D	E	F	H	J	R
CL-112-PHR-4	4.41	4.92	1/4-20	.79	1.93	.39	.51	.51
CL-128-PHR-4	5.04	5.55			2.01			
CL-160-PHR-5	6.30	6.97	5/16-18	1.02	2.24	.47	.67	.67
CL-192-PHR-5	7.56	8.23						

ALUMINUM — TAPPED (METRIC)

PART NO.	A	B	D	E	F	H	J	R
CLM-112-PHR-6	4.41	4.92	M6	.79	1.93	.39	.51	.51
CLM-128-PHR-6	5.04	5.55			2.01			
CLM-160-PHR-8	6.30	6.97	M8	1.02	2.24	.47	.67	.67
CLM-192-PHR-8	7.56	8.23						

STAINLESS STEEL — TAPPED (METRIC)

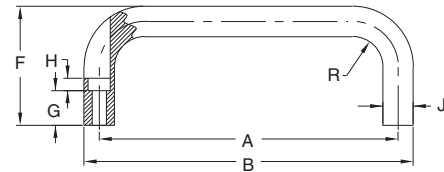
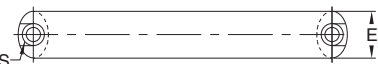
PART NO.	A	B	D	E	F	H	J	R
CLM-112-PHR-6-S	4.41	4.92	M6	.79	1.93	.39	.51	.51
CLM-128-PHR-6-S	5.04	5.55			2.01			



**Rounded Design
Aluminum
Counterbored**

Similar to the handles above, except counterbored for socket-head cap screws. Attractive, modern-design aluminum handle provides a comfortable grip with good ergonomic features. Durable black powder-coated pebble finish. Choice of four handle sizes.

COUNTERBORED
HOLES FOR
D DIA SOCKET
HEAD CAP SCREWS



ALUMINUM — COUNTERBORED

PART NO.	A	B	D	E	F	G	H	J	R
CL-116-PHRC-4	4.57	5.08	1/4 or M6	1.02	2.09	.39	.28	.67	.67
CL-132-PHRC-4	5.20	5.71			2.17				
CL-164-PHRC-4	6.46	6.97			2.24				
CL-196-PHRC-4	7.72	8.23							