

Work supports - Collet-Lok® design

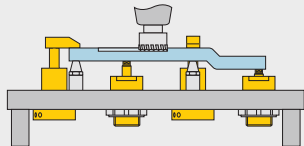
Shown: MPFS-100, MPTS-100

Collet-Lok®
products



MP series

Enerpac work supports provide either additional non-fixed location points to the clamps, or support to larger or thin section workpiece components, always in order to minimize workpiece deflection during machining. The Collet-Lok® design does not require hydraulic system pressure to maintain support position.



While pallet No. 1 is in the machine, a new work piece is loaded on to pallet No. 2.

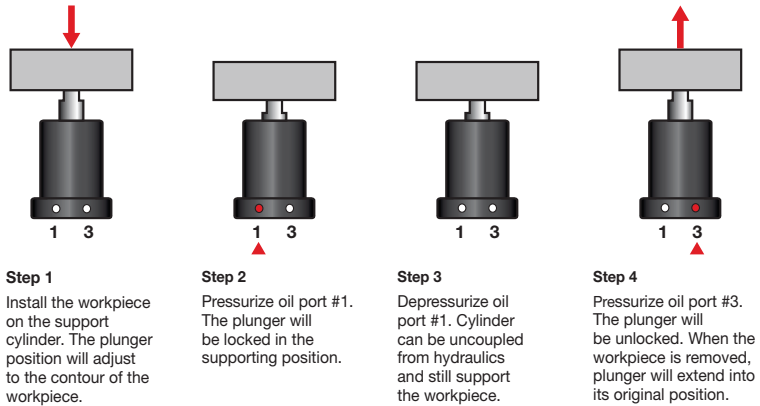


16 **ENERPAC**

Hydraulically locked, mechanically maintained work support

- Collet-Lok® design allows the work support to maintain support position after the hydraulic pressure is removed
- Collet-Lok® maintains a higher level of safety, as it is not dependent on hydraulic supply pressure
- Low deflection: lowest deflection of any work support available
- Threaded or flanged body increases mounting flexibility
- Capacities up to 44,5 kN available.

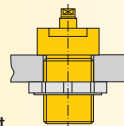
Collet-Lok® sequence



Mounting style

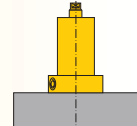
MPT series, Threaded mount

Threaded body can be used with a threaded hole in fixture plate or a jam nut with a bored hole. Ports are located in top collar block.



MPF series, Flange models

Mounts directly to fixture plate. Offers the flexibility of side ports or manifold ports on the underside of the flange.



Product selection

Max. support force	Support plunger stroke	Flange models	Threaded models	Operating pressure		Locking system displacement		Plunger contact spring force	Max. oil flow
				min.	max.	lock	unlock		
8,9 kN	10 mm	MPFS-100V	-	100	350	3,93	3,93	20,0 N	0,5 l/min
17,8 kN	10 mm	MPFS-200V	-	100	350	6,06	6,06	35,2 N	1,0 l/min
44,5 kN	19,6 mm	MPFS-450V	-	100	350	18,03	18,03	300,4 N	4,0 l/min
8,9 kN	10 mm	-	MPTS-100V	100	350	3,93	3,93	15,0 N	0,5 l/min
17,8 kN	10 mm	-	MPTS-200V	100	350	6,06	6,06	30,0 N	1,0 l/min

Dimensions & options MP-series

Force: 8,9 - 44,5 kN

Stroke: 10 - 19,6 mm

Pressure: 100 - 350 bar

- E** Cilindros de soporte
- F** Vérin anti-vibreur
- D** Abstützzyylinder



Options

Collet-Lok® swing cylinders

12 ▶



Auto couplers

174 ▶



Positive clamping cylinders

80 ▶



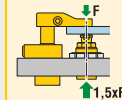
Sequence valves

152 ▶

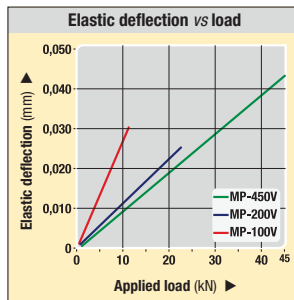
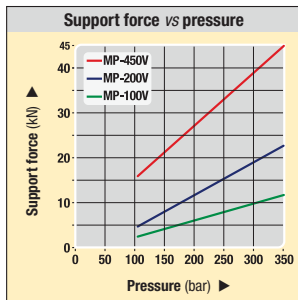


Important

WARNING!
Support force and clamping force must be matched. Support force should be at least 150% of clamping force.

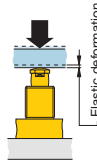


For proper application, clamp force, pressures and timing, consult Enerpac for support.

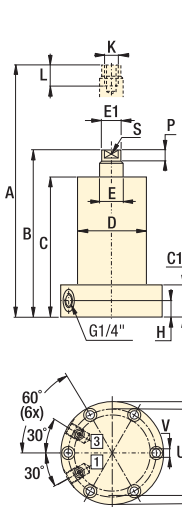


Deflection chart:

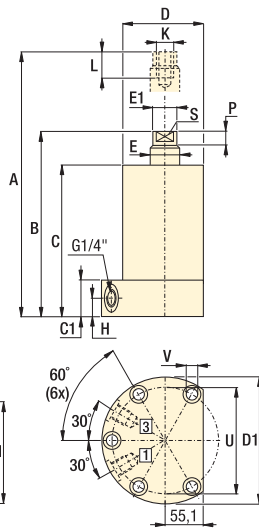
Elastic deformation of the work support resulting from the application of load.



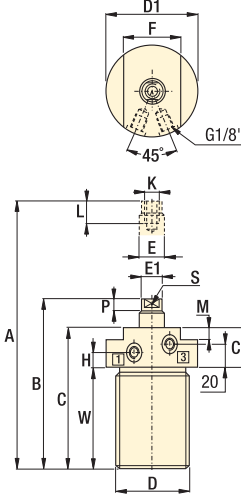
MPFS-100V, -200V



MPFS-450V



MPTS-100V, -200V



Product dimensions in mm [\varnothing]

Model number	A	B	C	C1	D	D1	E	E1	F	H	K	L	M	P	S*	U	V	W	X	kg
					\varnothing	\varnothing	\varnothing	\varnothing								\varnothing	\varnothing	\varnothing	\varnothing	
▼ Flange models																				
MPFS-100V	126	116	106	25	\varnothing 76	110	15,9	14	-	12,5	M8 x 1,25	15	-	7	2,8	94,1	9	-	81,5	4,0
MPFS-200V	130	120	106	25	\varnothing 92	130	25	24	-	12,5	M12 x 1,75	20	-	9	2,8	112,1	9	-	97,1	6,0
MPFS-450V	193,4	173,8	161	25	\varnothing 130	165	50	48	-	12,5	M20 x 2	30	-	10	30**	147	11	-	125	16,0
▼ Threaded models																				
MPTS-100V	125	115	105	38	M60 x 2	69	15,9	14	55	15,5	M8 x 1,25	15	20	7	2,8	-	-	67	-	3,0
MPTS-200V	129	119	105	38	M80 x 2	89	25	24	70	15,5	M12 x 1,75	20	20	9	2,8	-	-	67	-	4,0

* 2x spanner holes \varnothing 2,8 mm for MPFS-100 and 200 models.

** Wrench Flats for MPFS-450.

Collet-Lok® Products
Swing Clamps
Work Supports
Linear Cylinders
Power Sources
Valves
Pallet Components
System Components
Yellow Pages