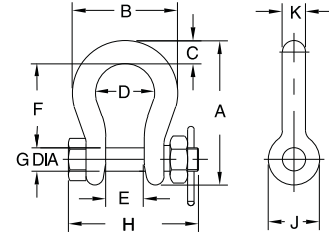


HOIST RING ACCESSORIES



Forged Anchor Shackles

High-strength forged alloy-steel anchor shackle. Supplied with thin-head bolt and nut with cotter pin. Meets Federal Specification RR-C 271D, Type IVA, Grade A, Class 3. Safety factor = 6:1. Heat treated with black oxide finish. See general Hoist Ring Safety Precautions on page 58.



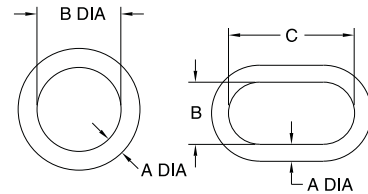
FORGED ANCHOR SHACKLES (USA)

PART NO.	LOAD RATING (LBS)	NOMINAL SHACKLE SIZE	A	B	C	D	E	F	G DIA	H	J	K
CL-36511-FAS	2000	3/8	2.49	1.78	.38	1.03	.66	1.44	.44	2.17	.91	3/8
CL-36521-FAS	3000	7/16	2.91	2.03	.44	1.16	.75	1.69	.50	2.51	1.06	7/16
CL-36531-FAS	4000	1/2	3.28	2.31	.50	1.31	.81	1.88	.63	2.80	1.19	1/2
CL-36541-FAS	6500	5/8	4.19	2.94	.69	1.69	1.06	2.38	.75	3.53	1.50	5/8
CL-36551-FAS	13000	7/8	5.83	4.03	.97	2.28	1.44	3.31	1.00	4.71	2.09	7/8
CL-36561-FAS	19000	1-1/8	7.47	5.16	1.25	2.91	1.81	4.25	1.25	5.09	2.69	1-1/8
CL-36571-FAS	24000	1-1/4	8.25	5.75	1.38	3.25	2.03	4.69	1.38	6.51	3.00	1-1/4



Forged Rings

High-strength weldless forged alloy-steel ring. Meets Federal Specification RR-C 271D, Type VI. Safety factor = 6:1. Heat treated with black oxide finish. The largest-size Forged Ring (49000 lbs capacity) is oval shaped. See general Hoist Ring Safety Precautions on page 58.

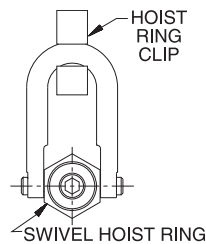


FORGED RINGS

PART NO.	LOAD RATING (LBS)	A DIA	B DIA	C
CL-36111-FR	3800	3/8	2	—
CL-36121-FR	6100	5/8	3	—
CL-36131-FR	18000	1	4	—
CL-36141-FR	30000	1-3/8	6	—
CL-36151-FR	49000	1-1/2	5-1/4	10-1/2

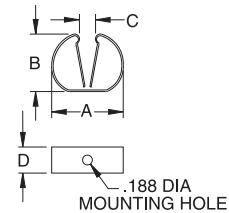


Hoist-Ring Clips



SWIVEL HOIST RING

Handy holddown clip to keep Swivel Hoist Rings and Side-Pull Hoist Rings from rotating when not in use. Spring steel, zinc plated. Available in two sizes, one fitting ring diameters from 3/8" to 5/8", the other fitting ring diameters from 3/4" to 1-1/16".



.188 DIA MOUNTING HOLE

HOIST-RING CLIPS

PART NO.	FITS RING DIAMETER	A	B	C	D
CL-1-HRC	3/8, 7/16, 5/8	1-3/8	15/16	5/16	1/2
CL-2-HRC	3/4, 1-1/16	1-5/8	1-1/4	3/4	5/8

HOIST RING ACCESSORIES

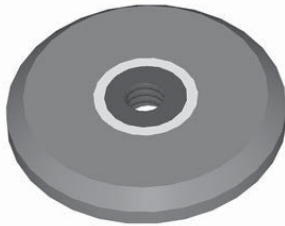
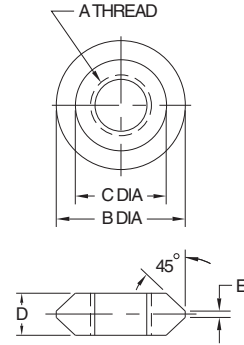


Weld-In Threaded Inserts

Weld-In Threaded Inserts are ideal for installing hoist rings in road plates and other difficult-to-handle loads. These weld-in inserts provide an easier alternative to tapping large-diameter holes. High-tensile alloy steel. Install by cutting a hole in the plate and welding in place, flush with the surface. Weld around the entire perimeter of the base (certified welding). Welding instructions are included with each shipment. See general Hoist Ring Safety Precautions on page 58.

USA

PART NO.	THREAD TYPE	A	B DIA	C DIA	D	E
CL-36980-WTI	UNC	3/4-10	3	2-1/8	1	1/8
CL-36982-WTI	UNC	1"-8				
CL-36984-WTI	UNC	1-1/4"-7				
CL-36986-WTI	COIL	1-1/4" COIL	3-1/2	2-3/8	1-1/2	3/8
CL-36988-WTI	ACME	1-1/4" ACME				
CL-36990-WTI	UNC	1-1/2"-6				
CL-36992-WTI	COIL	1-1/2" COIL	3-1/2	2-3/8	1-1/2	3/8
CL-36994-WTI	ACME	1-1/2" ACME				
CL-36996-WTI	UNC	2"-4-1/2				

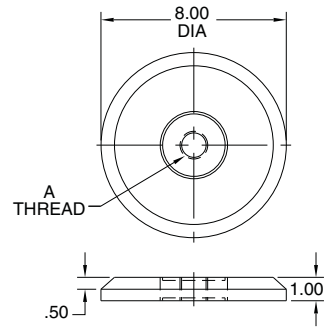


Renewal Road Plates Round

Renewal Road Plates are ideal for repairing the center section of a road plate that has existing holes or slots from prior usage. These weld-in plates (G-50 steel) with an alloy-steel threaded insert provide an easier alternative to tapping large-diameter holes. Install by cutting a hole in the plate and welding in place, flush with the surface. Weld around the entire perimeter of the base (certified welding). Welding instructions are included with each shipment. See general Hoist Ring Safety Precautions on page 58.

USA

PART NO. ROUND	THREAD TYPE	A
CL-36431-RRP	UNC	1-1/4"-7
CL-36430-RRP	COIL	1-1/4" COIL
CL-36451-RRP	UNC	1-1/2"-6
CL-36450-RRP	COIL	1-1/2" COIL



Renewal Road Plates Square

Same specifications as the round Renewal Road Plates shown above, except with a square shape.

USA

PART NO. SQUARE	THREAD TYPE	A
CL-36426-RRP	UNC	1-1/4"-7
CL-36425-RRP	COIL	1-1/4" COIL
CL-36446-RRP	UNC	1-1/2"-6
CL-36445-RRP	COIL	1-1/2" COIL

