



**ROEMHELD**  
HILMA ■ STARK

Issue 10-15 E

# WS 5.3570

## Workholding Systems PC 80

mechanically operated, clamping against the fixed jaw or concentric clamping  
jaw width 80 mm, clamping force 20 kN, clamping stroke 50 or 62 mm



Clamping system PC 80 F  
clamping against fixed jaw

### Advantages

- Clamping against the fixed jaw or concentric clamping
- Compact design
- Simple low-cost clamping system
- Mounting holes as per customer's request are possible
- All steel design
- Standard design with step jaws
- Accessory top jaw
- Accessory adaptor plate
- Easy disassembly and cleaning

### Technical data

Operation:	mechanical
Clamping:	against fixed jaw or concentric clamping
Jaw width:	80 mm
Clamping force:	20 kN at 60 Nm
Clamping stroke:	50 mm (fixed jaw) 62 mm (concentric)
Overall length:	170 mm
Height:	60 mm



Clamping system PC 80 Z  
concentric clamping

### Description

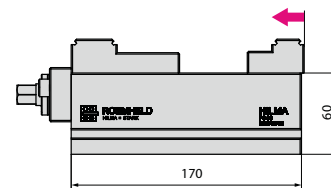
PC 80 clamping systems excel by a simple, compact design and a low price. They are particularly suitable for use in pallet magazines. PC 80 clamping systems in all-steel design are supplied with clamping jaws and offer high precision and process safety. The clamping jaws equipped with grip texture offer a good retention force even with low clamping forces. For mounting, the bottom sides of the PC 80 clamping systems are provided with 4 tapped holes M8 in a grid of 52 mm as well as with a tapped hole M10 for the location of a STARK draw-in nipple (see accessory). At the side of the base there are clamping grooves for fixation with clamping claws. The simple design of the PC 80 clamping systems allows easy disassembly and thus easy cleaning of the clamping systems.

### Designs

Two different designs are available that differ in their clamping type and clamping stroke and thus in the opening (see page 2).

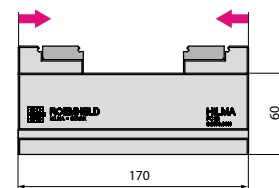
#### Design: PC 80 F

clamping against the fixed jaw  
clamping stroke: 50 mm



#### Design: PC 80 Z

concentric clamping  
clamping stroke: 62 mm



### Application

PC 80 clamping systems are advantageously used for workpiece clamping of small and medium-sized batches. As well as in automated systems where workpiece pallet storage units are used at the machine tool.

### Accessories

(see page 3)

- Top jaw
- Torque wrench and socket
- Adaptor plate
- Clamping claws
- STARK draw-in nipple

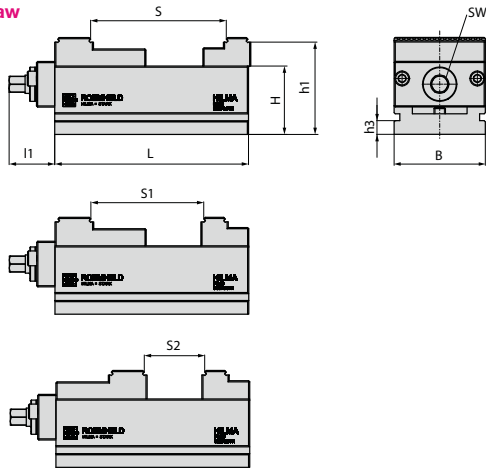
### Accessory rapid change block Quintus 1

(see data sheet WS 5.6150)

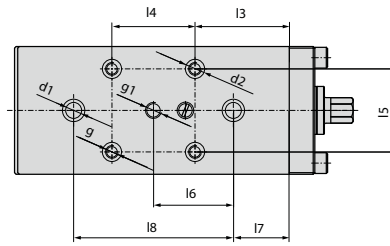
- for mounting of the PC 80 clamping systems on the machine table
- available with or without zero point clamping system

## Dimensions

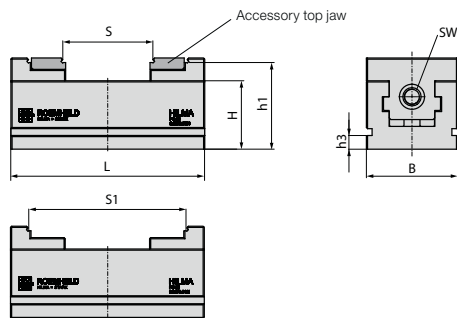
### PC 80 F Fixed jaw



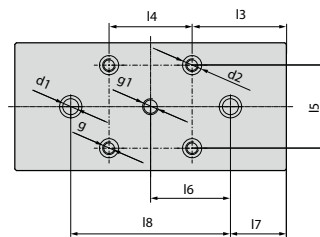
View from below



### PC 80 Z Concentric



View from below



Type		PC 80 F	PC 80 Z
Design		Fixed jaw	Concentric
<b>Clamping force</b>	[kN at 60 Nm]	20	20
<b>L</b>	[mm]	170	170
<b>B</b>	[mm]	80	80
<b>H</b>	[mm]	60	60
<b>S</b>	[mm]	69–119	17–79
<b>S1</b>	[mm]	51–99	75–139
<b>S2</b>	[mm]	6–54	–
<b>SW</b>	[mm]	14	12
<b>d1</b>	[mm]	10F7	10F7
<b>d2</b>	[mm]	12H7	12H7
<b>h1</b>	[mm]	81	76
<b>h3</b>	[mm]	12	12
<b>l1</b>	[mm]	40	–
<b>l3</b>	[mm]	59	59
<b>l4</b>	[mm]	52*	52*
<b>l5</b>	[mm]	52*	52*
<b>l6</b>	[mm]	50	50
<b>l7</b>	[mm]	35	35
<b>l8</b>	[mm]	100*	100*
<b>g</b>	[mm]	M8	M8
<b>g1</b>	[mm]	M10x11	M10x11
<b>Weight with jaws</b>	[kg]	7	6
<b>Part no. with jaws</b>		<b>9.3573.0111</b>	<b>9.3573.0311</b>

\* Tolerance ± 0.01 mm

## Accessories • Application examples

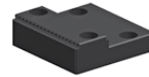
### Accessories

#### Top jaw with grip



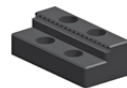
Type	Part no.	Dimensions
PC 80 Z	5.3005.0371	80 x 30 x 10

#### Step jaw smooth, fix



Type	Part no.	Dimensions
PC 80 F	9.3573.6901	80 x 80 x 21

#### Step jaw smooth, movable



Type	Part no.	Dimensions
PC 80 F	9.3573.6902	42 x 80 x 21

#### Torque wrench



Type	Part no.	Torque [Nm]
PC 80	9.3583.7010	5–60

#### Socket for torque wrench



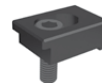
Type	Part no.	SW
PC 80 Z	1.3124.0021	12
PC 80 F	1.3124.0020	14

#### Draw-in nipple M10 for Quintus 1 Mounting at the clamping system



Type	Part no.	Quantity
PC 80	9.3920.0201	1 off

#### Clamping claws Set of 4 off including screws



Type	Part no.	Thread
PC 80	9.3583.7001	M10
	9.3583.7002	M12

#### Allen wrench for clamping jaws and top jaws



Type	Part no.	SW
PC 80 Z	1.6911.0001	5
PC 80 F	1.6911.0002	6



**Adaptor plate including screws and positioning bolts**  
Top side: 4 through holes in the grid of 52 mm  
Bottom side: 4 tapped holes M8 in the grid of 96 mm  
Top surface prepared for the location of MC 60.  
See data sheet 5.3580

Type	Part no.	Dimensions
PC 80	9.3297.8093	170 x 130 x 32

### Application examples



Clamping system PC 80 Z equipped with 4 off draw-in nipples in the grid of 52 mm (compatible for use in LANG Quick Point 52).



Clamping system PC 80 Z on adapter plate.



Clamping system PC 80 Z on adapter plate. Adaptor plate equipped with 4 off draw-in nipples in the grid of 96 mm (compatible for use in LANG Quick Point 96).



Clamping system PC 80 Z with draw-in nipples suitable for the rapid change block Quintus 1 with STARK zero point clamping system SPEEDY metec.