

## Compact clamping claw with movable clamping lever



**ROEMHELD**  
HILMA ■ STARK



### Application:

- universal use on machined and unmachined workpieces
- any position is possible due to the self-locking clamping lever
- clamping and locking of dies and workpieces on injection moulding machines and machine tools

### Function:

1. move the clamping lever to the clamping point
2. clamp using the hexagonal collar screw
3. unclamp in the reverse order

### Mounting hints:

1. remove the ISO 4762-M6x10 stop screw
2. return the clamping lever and remove it
3. fasten the base body with 2 Allen screws (delivered with the clamping claw)
4. put the clamping lever into the guiding groove of the base body and insert it.
5. tighten the ISO 4762-M6x10 stop screw

### Special features:

- ◆ material: tempered steel, base body with black coating, clamping lever with silver-coloured coating
- ◆ precise, clamps true to position
- ◆ convenient, universal handling
- ◆ high clamping force with low tightening torque, wear-resistant due to the clamping lever provided with a slide bearing
- ◆ large, infinitely variable clamping range
- ◆ the clamping lever can be completely retracted into the housing to enable the unimpeded change of workpieces
- ◆ the clamping lever has a location thread for various clamping elements, e.g. ball pressure screws or pendulum supports
- ◆ large adjusting range with constant clamping force
- ◆ infinitely variable extension of the clamping range using a height adapter
- ◆ easy and flexible fastening options
- ◆ protected against corrosion
- ◆ resistant to dirt and swarf

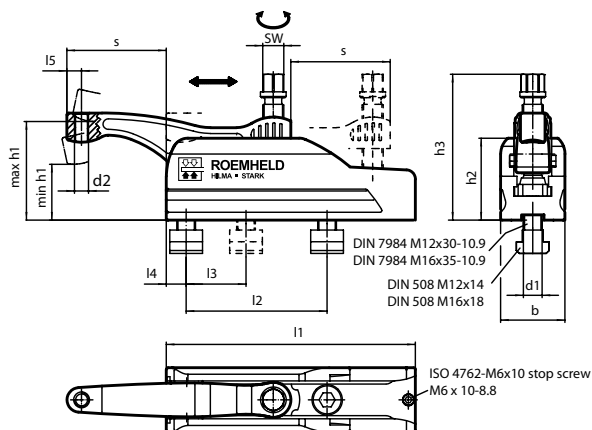
**6.2340**

05/2011

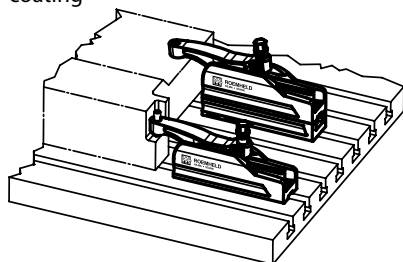


**ROEMHELD**  
HILMA ■ STARK

## Compact clamping claw with movable clamping lever



Base body made from tempered steel, black coating  
Clamping lever made from tempered steel, silver-coloured coating



## Compact clamping claw with movable clamping lever

Clamping force (kN)	15	25
Tightening torque (Nm)	45	75
d1 (mm)	M 12	M 16
T-slot nut for groove (mm)	14	18
d2 (mm)	M 8	M 12
SW (mm)	16	18
h1 min. (mm)	40	47
h1 max. (mm)	60	85
h2 (mm)	59	70
h3 (mm)	95	126
s max. (mm)	43	85
l1 (mm)	134	213
l2 +1 (mm)	70	120
l3 (mm)	50	50
l4 (mm)	13	17
l5 (mm)	10,0	12,5
b (mm)	45	55
Weight (kg)	1,85	4,34
Part no.	8.2340.0100	8.2340.0200

Scope of supply: Base body  
Clamping lever  
Fastening screws  
T-slot nuts

## Height adapters for compact clamping claw

d1 (mm)	M 12	M16
l1 (mm)	134	213
l2 +1 (mm)	70	120
l3 (mm)	50	50
l4 (mm)	13	17
h (mm)	20	35
b1 (mm)	45	55
b2 H12 (mm)	14	18
Weight (kg)	0,72	2,6
Part no.	8.2340.0001	8.2340.0002

\* If using several height adapters, the fastening screws as per ISO 10642 and DIN 7984 respectively must be replaced by screws extended by dimension h

### Please note:

The height adapters for the compact clamping claw allow the clamping range to be extended and have the following outstanding features:

- Infinitely variable extension of the clamping range
- The T-slot in the height adapter allows for exact positioning by moving the clamping claw at predefined grid spacings.

**6.2340**

05/2011

Subject to technical modification