



ROEMHELD

Issue 5-08 E

M 8.100

Base Plates for moduLog lifting modules



Base plate 500 x 500 mm

Advantages:

- moduLog interface
- Increased stability
- Installation possible on many sub-floors
- Simple mounting

Application

Base plates are primarily used with lifting modules.

They are screwed to the lifting module and the floor to get a larger support surface and an increased stability of the lifting module.

The use of base plates is especially recommended for uneven sub-floors and high moment loads.

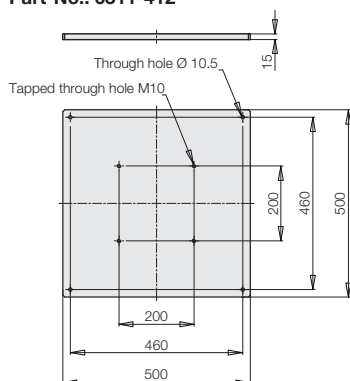
Material

Steel, black oxide

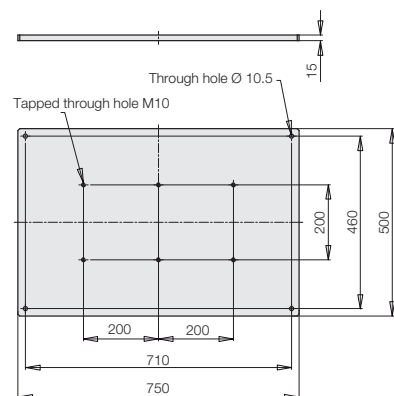
For lifting modules:

- Basic
- Shop-Floor
- Strong

Base plate 500 x 500 mm
with single interface 200 x 200
Part-No.: 6311-412



Base plate 750 x 500 mm
with double interface 200 x 200
Part-No.: 6311-460



For lifting modules:

- Range
- Twin-Strong

moduLog Base plate

Part-no. 6311-XXX



Combinable with the module

- Lifting modules as per data sheet M 4.XXX



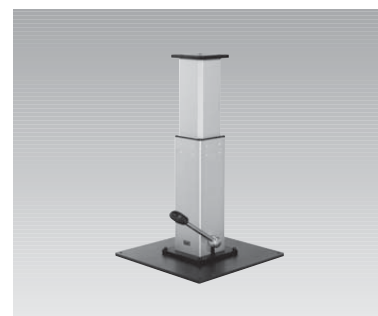
moduLog interface

- 200 x 200 - M10

Important note!

The fixing screws M10 are not included in our delivery.

Application example



Lifting module Shop-Floor with base plate