



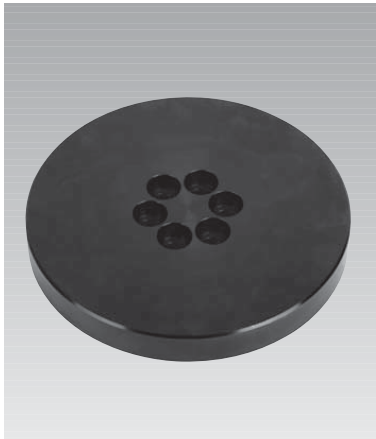
ROEMHELD

Issue 9-07 E

M 8.120

Flange Plate for *modulog* rotating modules

Flange plate Ø 170 mm



Advantages:

- Individual design for fixing of component parts
- Simple mounting
- Standard plate

Application

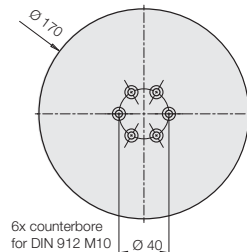
The flange plate can be used instead of the *modulog* flange plate of the rotating modules - horizontal axis DMH and rotating modules - vertical axis DMV.

Compared with the *modulog* flange plate, this plate does not have an 140 x 140 *modulog* interface.

This plate offers the possibility to design individual fixing for component parts. Specific bore patterns or other provisions for the location of component parts or fixtures can be provided by the user.

The flange plate can be easily exchanged against the *modulog* flange plate.

Dimensions



Material

Steel, black oxide

Note

Fixing of the flange plate at the rotating module is made by the available screws M10 of the rotating module.

modulog Flange plate

Part-no. 6311-400

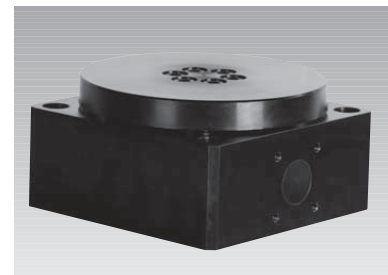


Combinable with the modules

- Rotating module – horizontal axis DMH 200 as per data sheet M 1.101
- Rotating module – vertical axis DMV 1000 as per data sheet M 3.101



Application example



Rotating module - vertical axis DMV 1000 with flange plate Ø 170