

Industrial
Hydraulics

Electric Drives
and Controls

Linear Motion and
Assembly Technologies

Pneumatics

Service
Automation

Mobile
Hydraulics

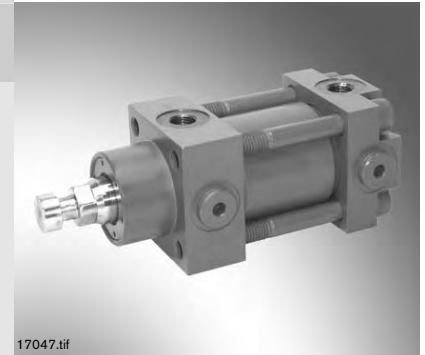
Rexroth
Bosch Group

Hydraulic cylinder Tie rod design

RE 17047/11.03 1/8

Type VBH

Nominal pressure 200 bar (20 Mpa)
Piston Ø 25 to 125 mm
Piston rod Ø 16 to 70 mm
4 mounting styles



Overview of contents

Contents

Features	1
Ordering details	2
Connection location	2
Piston rod ends	3
Technical data	3
Mounting styles:	
• Threads in cylinder head	4
• Rectangular flange at head end	5
• Self-aligning clevis at base end	5
• Foot mounting at head end	6
Spare parts	7
Weight	7

Features

– Standards: CNOMO 05-07-65 to 05-07-70
1 – Standard stroke lengths from 5 to 160 mm
2 – Without end position cushioning
– 3 / 2 connections at cylinder head and base

Ordering details

		G	
Design			
Differential cylinder	= HVBS		
Differential cylinder with sensor rod	= HVBD		
Piston Ø / Piston rod Ø in mm			
	25 / 16 = 02		
	32 / 18 = 03		
	40 / 22 = 04		
	50 / 28 = 05		
	63 / 36 = 06		
	80 / 45 = 08		
	100 / 56 = 10		
	125 / 70 = 12		
Stroke length (standard) in mm ¹⁾			
	5 = A		
	10 = B		
	16 = C		
	25 = D		
	40 = E		
	63 = F		
	100 = G ²⁾		
	160 = H ³⁾		
		Pipe connections	
		G =	Pipe thread to ISO 228/1
		H =	Normal temperature
		V ⁵⁾ =	High temperature
		Seal version	
		Mounting style + Piston rod end ⁴⁾	
		1 =	Threads in cylinder head + Thread
		2 =	Rectangular flange at head + Thread
		3 =	Foot mounting at head + Thread
		4 =	Self-aligning clevis at base + Thread
		5 =	Threads in cylinder head + Spigot
		6 =	Rectangular flange at head + Spigot
		7 =	Foot mounting at head + Spigot
		8 =	Self-aligning clevis at base + Spigot

¹⁾ Intermediates stroke with pressure limitation on request!

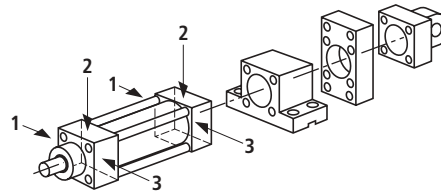
²⁾ Only piston Ø 32 to 125 mm

³⁾ Only piston Ø 40 to 125 mm

⁴⁾ Other piston rod end versions on request!

⁵⁾ Only for the HVBS version!

The HVBD version can be supplied as a special variant with V-seals (with the exception of the seals on the sensor rod), please consult ourselves.



The cylinders have, as standard, 3 or 2 pipe connections at the cylinder head and base, this is dependent on the mounting style. See table to the right.

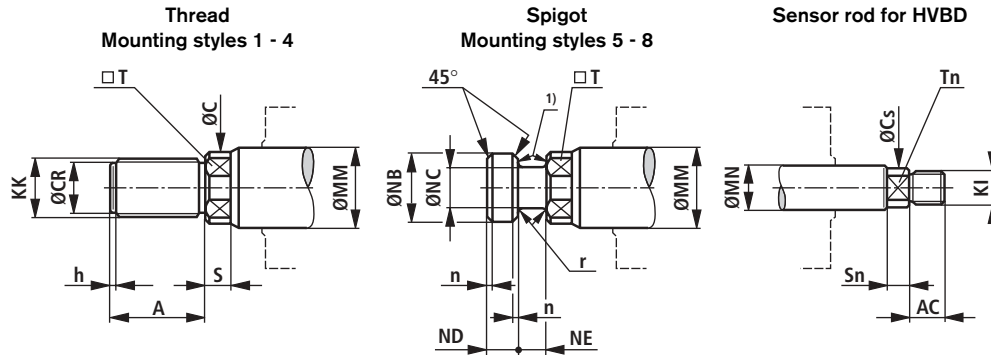
Orientation 2 is supplied, the other connections are plugged with easy to remove plugs.

Mounting style	Connection orientation	
	Head end	Base end
1, 2, 5, 6	2 + 3	1 + 2 + 3
4, 8	2 + 3	
3, 7	1 + 2 + 3	

This range of cylinders with their integrated mounts and no-end position cushioning are of a very short design and are therefore preferred for applications where the available installation space is very small, short strokes, low speed, low weight and low internal leakage for maintaining the pressure is required.

Example: Clamping devices, core ejectors or parts involved in mould manufacturing

Piston rod ends (in mm)



1) Force transmission surface

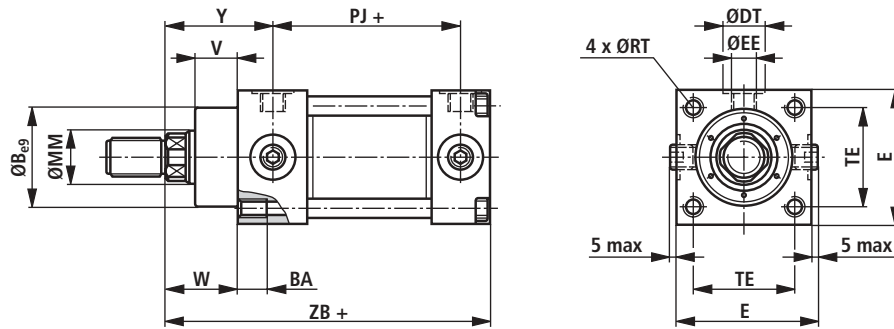
AL	MM	KK	A	CR	h	C	T	S	NB	NC	ND	NE	n	r	p_{max}	MN	AC	KI	Cs	Sn	Tn
Ø	Ø			h13	h13	H11	h13	h13	h13	H11	h13	H11			bar						
25	16	M12x1.25	20	9.5	2.5	14	12	8	14	8	6	6	0.2	0.3	180	10	10	M8x1.25	9.5	5	8
32	18	M12x1.25	20	9.5	2.5	15	13	8	15	9	6	6	0.2	0.3	115	10	10	M8x1.25	9.5	5	8
40	22	M16x1.5	25	13	3	19	17	8	18	11.2	8	8	0.2	0.5	125	12	12	M10x1.5	12	6	10
50	28	M20x1.5	32	17	3	25	22	8	22.4	14	10	10	0.2	0.5	115	12	12	M10x1.5	12	6	10
63	36	M27x2	40	23.5	3	33	30	12.5	28	18	12.5	12.5	0.3	0.8	130	12	12	M10x1.5	12	6	10
80	45	M33x2	50	29.5	3	42	36	12.5	35.5	22.4	16	16	0.3	0.8	110	12	12	M10x1.5	12	6	10
100	56	M42x2	63	38.5	5	53	46	14	45	28	20	20	0.5	1.2	125	16	16	M12x1.25	15	8	13
125	70	M56x2	80	48.5	5	67	60	14	56	35.5	25	25	0.5	1.2	115	16	16	M12x1.25	15	8	13

Technical data (for applications outside these parameters, please consult us!)

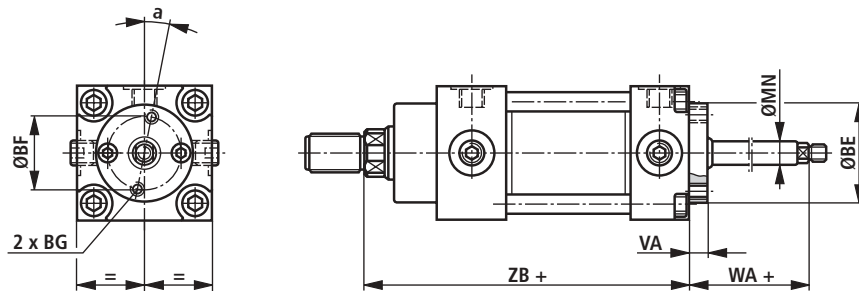
General			
Installation		Optional	
Maximum stroke speed	v_{max}	m/s	0.2 for piston Ø < 80
		m/s	0.1 for piston Ø > 80
Recommended maximum end stop velocity		mm/s	< 10
Stroke tolerance		mm	+2
Hydraulic			
Maximum operating pressure	p_{max}	bar	200 bar for standard strokes (cover attached by means of screws) with external threads; limited to 160 bar for intermediate strokes and tie rods (special version); for piston rod end spigots see dimension table
Pressure fluid temperature range	H-seals	°C	-20 to +80
	V-seals	°C	-20 to +160
Cleanliness class to ISO code			Maximum permissible degree of contamination of the pressure fluid is to ISO 4406 (C) class 20/18/15
Viscosity range		mm ² /s	2.8 to 380

Mounting styles 1 and 5: threads on cylinder head (in mm)

HVBS to CNOMO 05.07.66



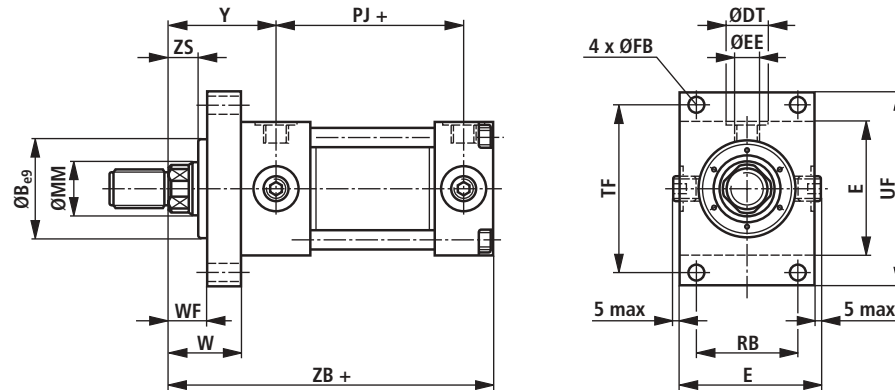
HVBD sensor rod to CNOMO 05.07.70



AL	MM	a	B	BA	BE	BF	BG	DT	E	EE	MN	PJ	RT	TE	V	VA	W	WA	Y	ZB
Ø	Ø		e9																	
25	16	-	36	12	36	25	M5	19	45	1/8	10	34	M6	34	16	8	28	20	46	92
32	18	-	40	12	36	25	M5	19	56	1/8	10	45	M8	42	20	8	32	20	48	102
40	22	-	45	12	42	32	M6	25	63	1/4	12	45	M10	45	25	12	40	32	55	115
50	28	-	56	12	42	32	M6	25	75	1/4	12	53	M10	56	28	12	40	32	57	125
63	36	15°	63	18	63	50	M6	28	85	3/8	12	56	M12	65	28	12	45	32	71	145
80	45	-	80	18	63	50	M6	28	106	3/8	12	63	M16	80	32	12	50	32	74	152
100	56	-	100	24	80	63	M8	34	125	1/2	16	70	M18	97,5	38	15	58	35	81	177
125	70	-	125	24	80	63	M8	34	160	1/2	16	80	M20	125	40	15	63	35	93	198

Mounting styles 2 and 6: rectangular flange at head (in mm)

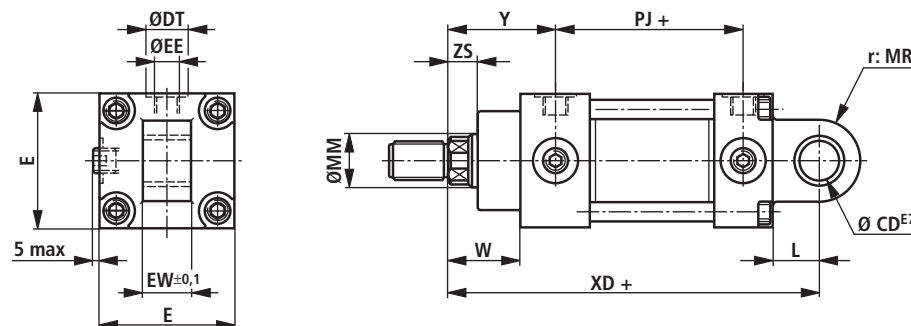
HVBS to CNOMO 05.07.67



HVBD sensor rod: see page 4

Mounting styles 4 and 8: self-aligning clevis at base (in mm)

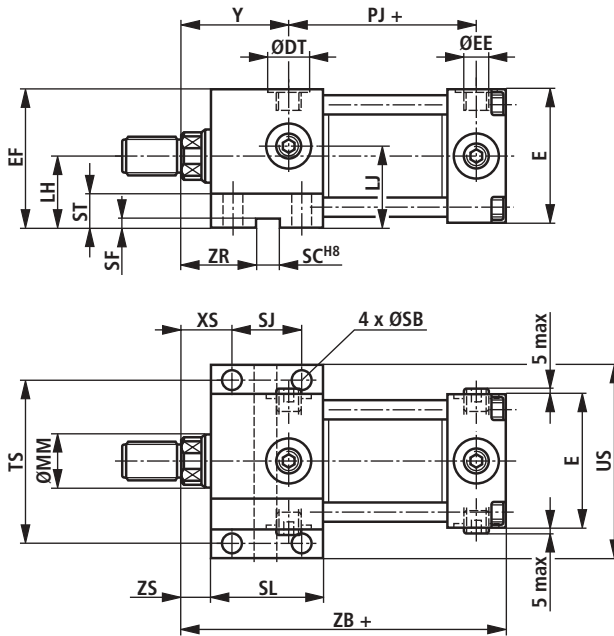
HVBS to CNOMO 05.07.69



AL	MM	B	CD	DT	E	EE	EW	L	MR	PJ	RB	TF	UF	W	WF	XD	Y	ZB	ZS
Ø	Ø	e9	E7				± 0,1												
25	16	36	12	19	45	1/8	16	20	14	34	34	56	70	28	16	112	46	92	12
32	18	40	12	19	56	1/8	16	20	14	45	36	71	86	32	16	122	48	102	12
40	22	45	16	25	63	1/4	20	25	16	45	45	80	100	40	20	140	55	115	15
50	28	56	20	25	75	1/4	25	25	20	53	50	95	115	40	16	150	57	125	12
63	36	63	25	28	85	3/8	32	32	25	56	65	104	124	45	21	177	71	145	17
80	45	80	32	28	106	3/8	40	40	32	63	80	132	160	50	22	192	74	152	18
100	56	100	40	34	125	1/2	50	56	40	70	98	155	185	58	24	233	81	177	20
125	70	125	50	34	160	1/2	63	63	50	80	125	195	230	63	27	261	93	198	23

Mounting styles 3 and 7: foot mounting at head (in mm)

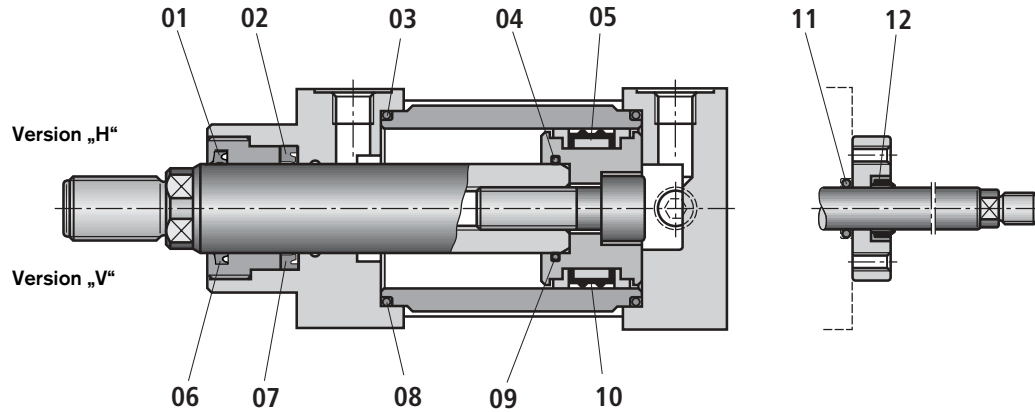
HVBS to CNOMO 05.07.68



HVBD sensor rod: see page 4

AL	MM	DT	E	EE	EF	LH	LJ	PJ	SB	SC	SF	SJ	SL	ST	TS	US	XS	Y	ZB	ZR	ZS
Ø	Ø									H8											
25	16	19	45	1/8	47.5	25	30	34	6.6	12	4	32	45	12	56	70	18.5	46	92	28.5	12
32	18	19	56	1/8	59	31	32	45	9	12	4	32	50	12	71	86	21	48	102	31	12
40	22	25	63	1/4	67.5	36	45	45	11	12	6	36	55	20	80	100	24.5	55	115	36.5	15
50	28	25	75	1/4	80	42.5	45	53	11	12	6	40	60	20	95	115	22	57	125	36	12
63	36	28	85	3/8	87.5	45	57	56	14	16	6	45	70	25	104	124	29.5	71	145	44	17
80	45	28	106	3/8	109	56	60	63	18	16	6	50	80	25	132	160	33	74	152	50	18
100	56	34	125	1/2	129.5	67	70	70	20	16	6	56	90	32	155	185	37	81	177	57	20
125	70	34	160	1/2	162	82	82	80	22	20	6	63	100	36	195	230	41.5	93	198	63	23

Spare parts



AL Ø	Seal version			Tightening torque Nm
	H Pos. 01 – 05	V Pos. 06 – 10	H Pos. 11 + 12	
25	1 817 010 900	1 817 010 908	7472 Z0Z 850	6,5
32	1 817 010 901	1 817 010 909	7472 Z0Z 850	16
40	1 817 010 902	1 817 010 910	7472 Z0Z 851	31
50	1 817 010 903	1 817 010 911	7472 Z0Z 851	35
63	1 817 010 904	1 817 010 912	7472 Z0Z 852	60
80	1 817 010 905	1 817 010 913	7472 Z0Z 852	90
100	1 817 010 906	1 817 010 914	7472 Z0Z 853	200
125	1 817 010 907	1 817 010 915	7472 Z0Z 853	320

Weight (in kg)

AL Ø	Mounting style				Stroke 100 mm
	1 / 5	2 / 6	3 / 7	4 / 8	
25	1.0	1.2	1.1	1.1	0.55
32	1.7	2.2	1.8	1.8	0.70
40	2.5	3.3	2.7	2.7	0.90
50	3.5	4.7	3.8	3.8	1.50
63	5.3	6.7	5.8	5.8	2.30
80	8.6	10.8	9.4	9.6	3.80
100	14.0	18.0	15.3	16.2	5.60
125	26.0	33.0	27.8	30.6	8.90

Notes

© 2003 by Bosch Rexroth AG, Industrial Hydraulics, 97813 Lohr am Main
All rights reserved. No part of this document may be reproduced or stored, processed, duplicated or circulated using electronic systems, in any form or by means, without the prior written authorisation of Bosch Rexroth AG, Industrial Hydraulics. In the event of contravention of the above provisions, the contravening party is obliged to pay compensation.

The data specified above only serve to describe the product. No statements concerning a certain condition or suitability for a certain application can be derived from our information. The details stated do not release you from responsibility for carrying out your own assessment and verification. It must be remembered that our products are subject to a natural process of wear and ageing.