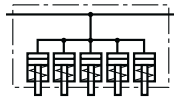


Clamping bar with press-in piston single-acting, with spring return



ROEMHELD
HILMA ■ STARK



Applications:

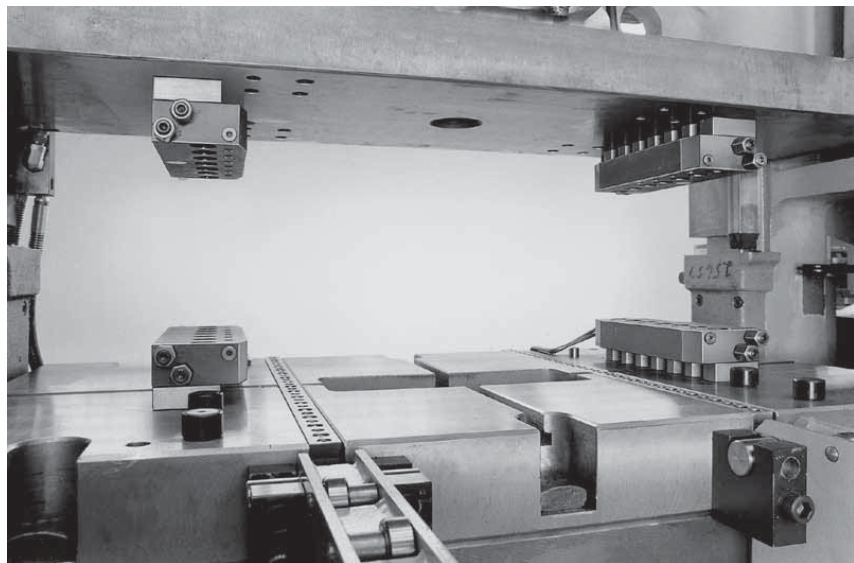
- stationary installed on press beds and rams
- on machines and equipment for clamping and locking
- clamping force up to 35 kN, piston stroke 6 mm

Function:

The clamping bar is mounted on the press bed or ram using a spacer ledge. Clamping is carried out on the die clamping edge by applying hydraulic pressure to the 5 pistons which are arranged side by side with a pressure medium and mechanical unclamping by a spring return. Hydraulic oil is supplied through G $\frac{1}{4}$ ports provided on both sides. Flat design with die inlet chamfers. Clamping force up to 35 kN uniformly distributed over 5 pistons. When using several clamping bars in a row, the elements are interconnected by means of hoses or pipes.

Special features:

- ◆ piston stroke 6 mm
- ◆ very flat and compact design
- ◆ the full length of the stroke may be used
- ◆ easy fastening
- ◆ rapid and easy retrofit



Clamping bars installed in press bed and ram.
Easy loading of dies using die change consoles and lateral guide rollers.

Subject to technical modification

2.2095

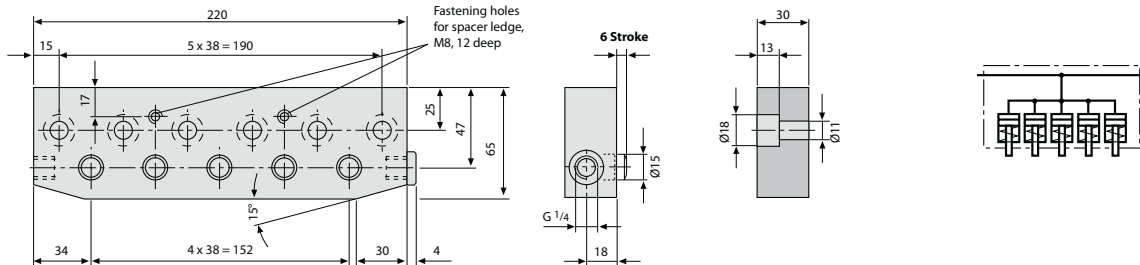
05/2011



ROEMHELD
HILMA ■ STARK

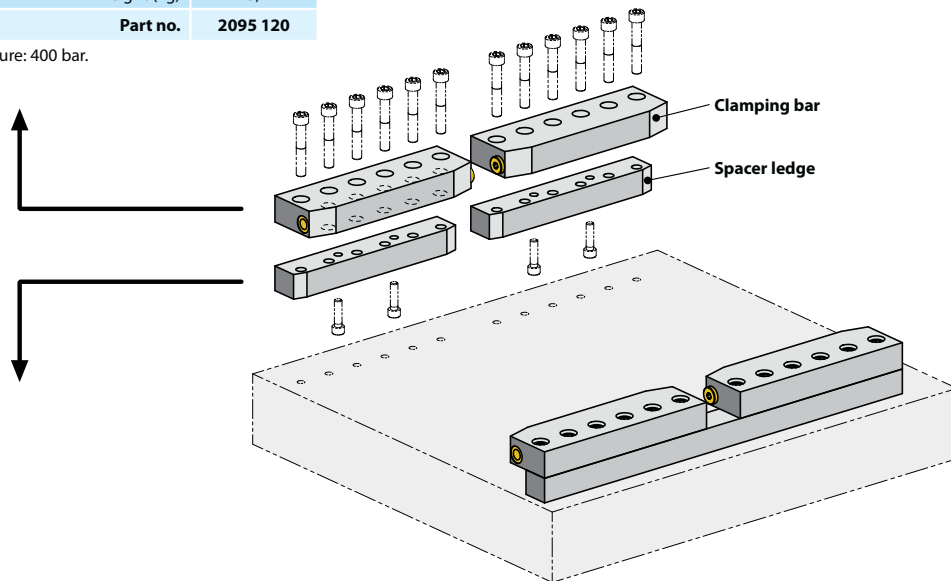
Clamping bar with press-in piston single-acting with spring return

Clamping bar



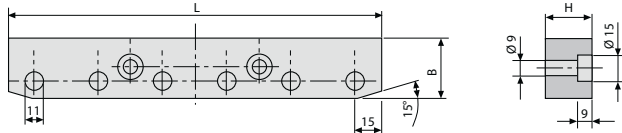
Clamping force at 400 bar (kN)	35,0
100 bar (kN)	8,7
Stroke (mm)	6,0
Oil consumption (cm ³)	5,3
Number of pistons	5,0
Piston Ø (mm)	15,0
Weight (kg)	3,2
Part no.	2095 120

max. operating pressure: 400 bar.



Spacer ledge

for obtaining the required clamping edge height



Length L (mm)	220	220
Width B (mm)	35	35
Height H (mm)	28	43
for clamping edge (mm)	25 ±1,5	40 ±1,5
Part no.	5.2071.0040	5.2071.0071

Other clamping edge heights H are available on request.

2.2095

05/2011

Subject to technical modification