

Electric Drives
and Controls

Hydraulics

Linear Motion and
Assembly Technologies

Pneumatics

Service

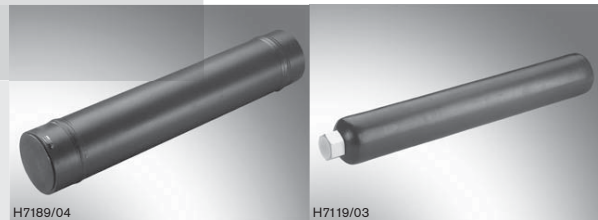
Rexroth
Bosch Group

Pulsation damper

RE 29253/06.05
Replaces: 04.04

1/4

Type SYPD



Type SYPD 0001

Type SYPD 0002

Series 2X
Nominal pressure 400 bar (type SYPD 0001)
Nominal pressure 300 bar (type SYPD 0002)

Table of contents

Contents	
Merkmale	
Ordering code	
Unit dimensions	

Page

Features

Application

- 1 SYPD pulsation dampers operate according to the reflection principle and are used in hydraulic systems that incorporate displacement pumps, where noise is transmitted predominantly through liquid-borne sound.
- 2
- 3

Rating

SYPD pulsation dampers are designed for a basic frequency of 450 Hz and, at this frequency, block the transmission of noise > 24 dB. This rating is ideal for pumps of types A10VSO and A4VSO at a drive speed of $n = 1500 \text{ min}^{-1}$.

Installation

The installation position of the damper is optional, with the direction of flow having to be observed. It should be arranged as closely as possible to the pump outlet.

To prevent the transmission of mechanical vibration to the system, it is required to install the pulsation damper so that it is isolated from structure-borne noise and to connect one connection side using a flexible hose.

Ordering code

Pulsation damper for A4VSO

SYPD 0001-2X/400		F450		*
Series 20 to 29 (20 to 29: unchanged technical data and pin assignment)	= 2X			Further details in clear text
Nominal pressure 400 bar	= 400			Connection version for V071
Pump type and size				01 = Thread to DIN ISO 228 for V180, V355, V750
A4VSO: Sizes 40 and 71	= V071			11 = SAE flange (high-pressure series)
A4VSO: Sizes 125 and 180	= V180			M = NBR seals suitable for mineral oil (HL, HLP) to DIN 51 524
A4VSO: Sizes 250 and 355	= V355			V = FKM seals suitable for phosphate ester (HFD-R)
A4VSO: Sizes 500 and 750	= V750			
Pulsation frequency 450 Hz	= F450			

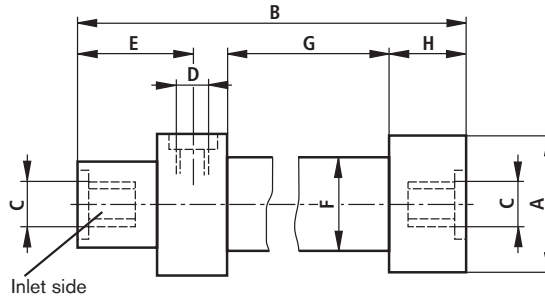
Pulsation damper for A10VSO

SYPD 0002-2X/300		F450	01	*
Series 20 to 29 (20 to 29: unchanged technical data and pin assignment)	= 2X			Further details in clear text
Nominal pressure 300 bar	= 300			Connection version
Pump type and size				01 = Thread to DIN ISO 228
A10VSO: Sizes 18, 28, 45 and 71	= V018			M = NBR seals suitable for mineral oil (HL, HLP) to DIN 51 524
A10VSO: Sizes 100 and 140	= V100			V = FKM seals suitable for phosphate ester (HFD-R)
Pulsation frequency 450 Hz	= F450			

Unit dimensions (in mm)

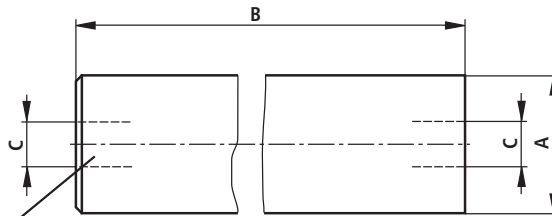
SYPD 0001

for A4VSO size 40 and size 71



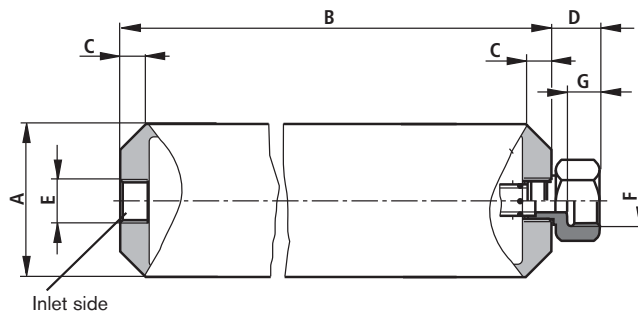
	Pump sizes			
	40, 71	125, 180	250, 355	500, 750
A	Ø 125	Ø 160	Ø 160	Ø 160
B	925	854	854	854
C	G 1 1/4	SAE 1 1/4"	SAE 1 1/2"	SAE 2"
D	G 1 1/4			
E	81			
F	Ø 83			
G	~ 720			
H	~ 75			

for A4VSO sizes 125 to 750



Marking of inlet side with 45° chamfer

SYPD 0002 für A10VSO



	Pump size	
	18, 28, 45, 71	100, 140
A	Ø 114,3	Ø 114,3
B	794	794
C	25 x 45°	25 x 45°
D	38	39
E	G 1	G 1 1/4
F	G 1 1/4	G 1 1/2
G	26.5	28.5

Notes

© This document, as well as the data, specifications and other information set forth in it, are the exclusive property of Bosch Rexroth AG. Without their consent it may not be reproduced or given to third parties.

The data specified above only serve to describe the product. No statements concerning a certain condition or suitability for a certain application can be derived from our information. The information given does not release the user from the obligation of own judgment and verification. It must be remembered that our products are subject to a natural process of wear and aging.