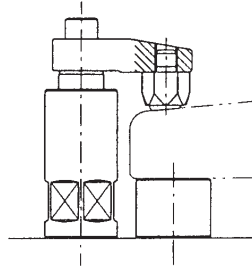


## SWIVEL CONTACT BOLTS

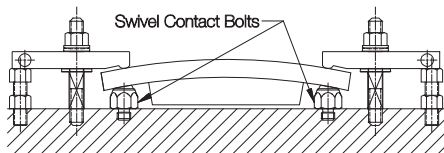
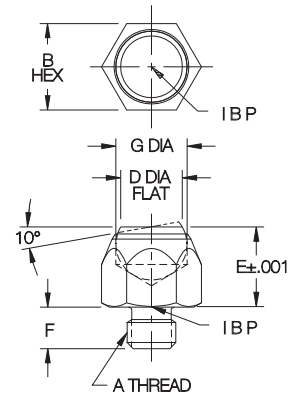
BALL: CHROME STEEL, HEAT TREATED RC 60-67  
BODY: 1144 STEEL, HEAT TREATED RC 35-40, BLACK OXIDE FINISH



Precision swivel ball that can be used as either a contact bolt or rest pad.



Swivel Contact Bolts are ideal for evenly distributing clamping pressure on sloped surfaces.



Swivel Contact Bolts are precision ground for accurate height location, even on sloped surfaces. See pages 393-396 for Riser Blocks, Extension Supports, and Height Shims.

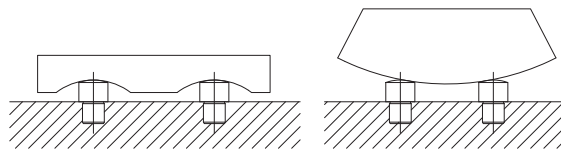
PART NO.	A	B	D DIA	E		F	G
				NOMINAL	ACTUAL		
CL-MF25-2502	5/16-18	9/16	13/32	1/2	.5000	.32	15/32
CL-MF30-2503	3/8-16	13/16	19/32	13/16	.8125	.47	23/32
CL-MF40-2501	1/2-13	7/8	5/8	13/16	.8125	.41	23/32
CL-MF50-2501	5/8-11	1-1/16	13/16	1	1.0000	.61	29/32

## SPHERICAL RADIUS LOCATOR BUTTONS

1144 STEEL, HEAT TREATED RC 40-45, BLACK OXIDE FINISH



Precision height locator with a spherical-radius head to minimize workpiece contact area. Close-tolerance shank allows press-fit installation in a reamed hole. Spherical-Radius Locator Buttons are extremely useful as supports, side locator pads, and jig feet.



PART NO.	B DIA	A DIA	C	D	E
CL-1-SLB	3/16	5/16	.1250	3/8	1/2
CL-2-SLB	1/4	3/8	.1875	1/2	5/8
CL-3-SLB	3/8	1/2	.1875	9/16	3/4
CL-4-SLB			.2500	5/8	
CL-5-SLB			.3750	3/4	
CL-6-SLB			.5000	7/8	

