

Electric Drives
and Controls

Hydraulics

Linear Motion and
Assembly Technologies

Pneumatics

Service

Rexroth
Bosch Group

Subplates size 25 with porting pattern to DIN 24340 form A and ISO 4401

RE 45058/10.05
Replaces: 01.03

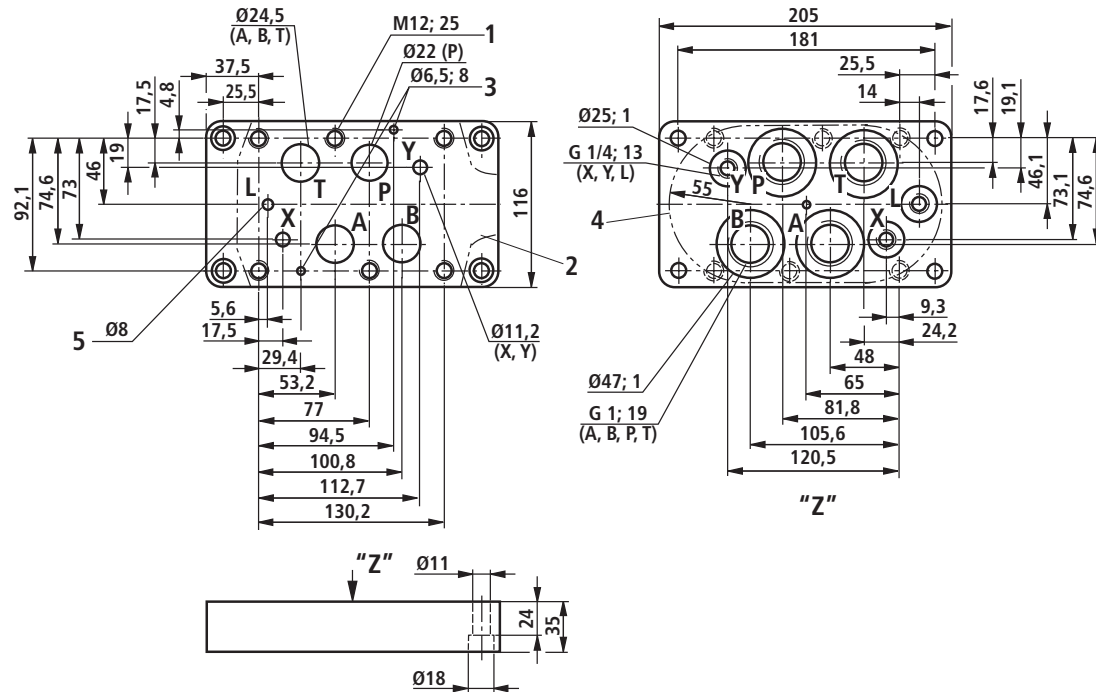
1/4

Size 25

Table of contents

Contents	Page
Types G 151/01 (G1); G 153/01 (G1)	2
Types G 154/01 (G1 1/4); G 156/01 (G1 1/2)	3
Type G 154/08 (flange connection)	4

Types G 151/01 (G1); G 153/01 ¹⁾ (G1) (nominal dimensions in mm)

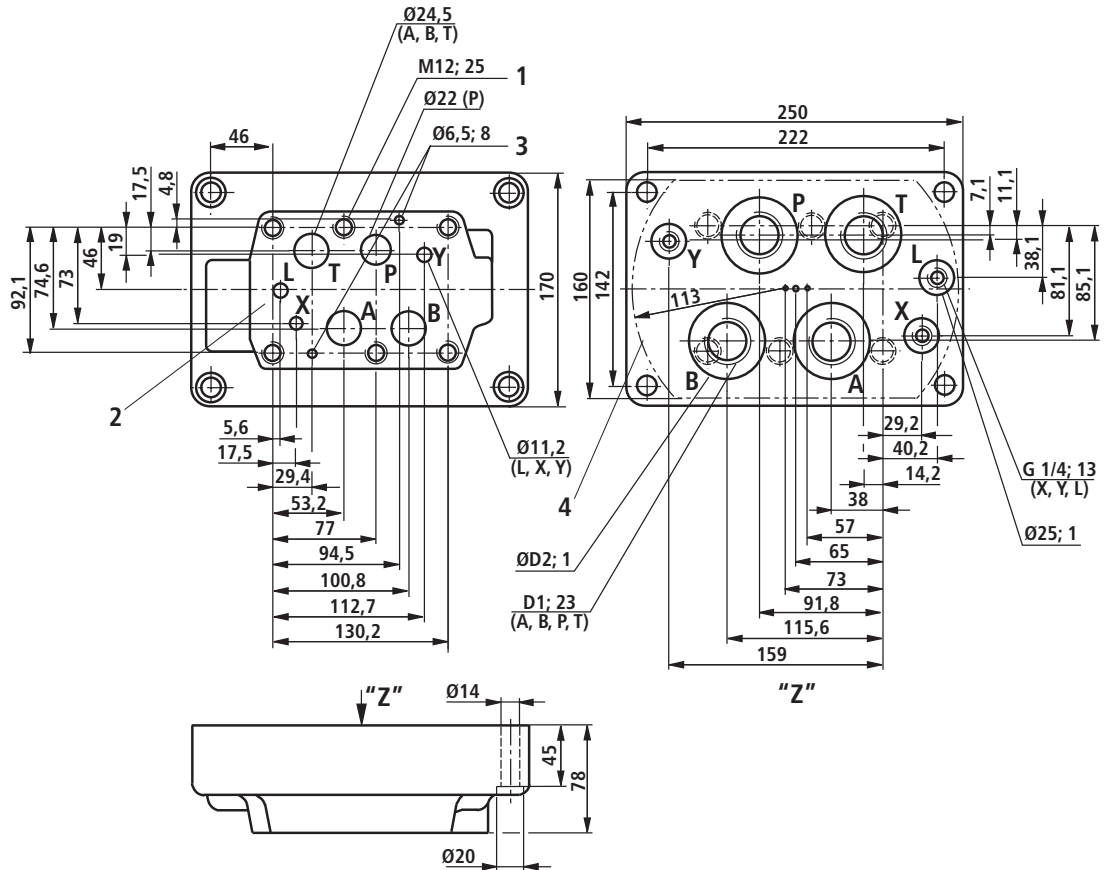


Type	Material no.	Weight in kg	Valve fixing screws ²⁾ (separate order)	M _T in Nm
G 151/01	R900424392	5	6 socket head cap screws ISO 4762 - M12 -10.9	130
G 153/01 ¹⁾	R900424395			

- 1 Valve fixing thread
- 2 Valve mounting face
- 3 Bores for locating pin
- 4 Front panel cutout
- 5 Connection bore Ø8 mm to port L drilled only on sub-plate G 153/01

¹⁾ For valves with pressure-centred zero position
²⁾ **Notes on valve fixing screws:**
 The length and tightening torque of valve fixing screws depend on the valve types and sandwich plates possibly provided.

Types G 154/01 (G1 1/4); G 156/01 (G1 1/2) (nominal dimensions in mm)



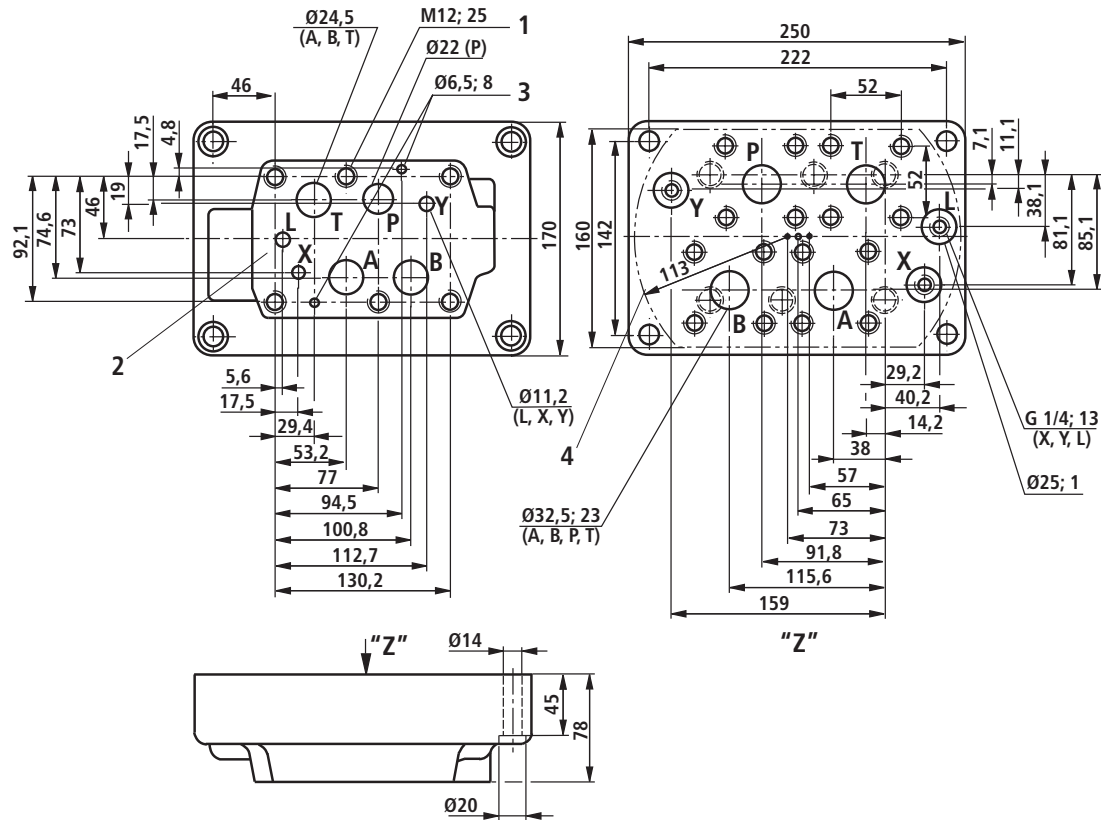
Type	Material no.	Weight in kg	D1	ØD2	Valve fixing screws ¹⁾ (separate order)	M _T in Nm
G 154/01	R900424396	16	G1 1/4	58	6 socket head cap screws ISO 4762 - M12 -10.9	130
G 156/01	R900424399		G1 1/2	65		

- 1 Valve fixing thread
- 2 Valve mounting face
- 3 Bores for locating pins
- 4 Front panel cutout

¹⁾ **Notes on valve fixing screws:**

The length and tightening torque of valve fixing screws depend on the valve types and sandwich plates possibly provided.

Type G 154/08 (flange connection) (nominal dimensions in mm)



Type	Material no.	Weight in kg	Valve fixing screws ¹⁾ (separate order)	M _T in Nm
G 154/08	R900424398	16	6 socket head cap screws ISO 4762 - M12 -10.9	130

Connecting flanges for G 154/08

Max. operating pressure	Material no.
250 bar	R900009176
400 bar	R900009177

¹⁾ Notes on valve fixing screws:

The length and tightening torque of valve fixing screws depend on the valve types and sandwich plates possibly provided.

- 1 Valve fixing thread
- 2 Valve mounting face
- 3 Bores for locating pins
- 4 Front panel cutout

© This document, as well as the data, specifications and other information set forth in it, are the exclusive property of Bosch Rexroth AG. It may not be reproduced or given to third parties without its consent.

The data specified above only serve to describe the product. No statements concerning a certain condition or suitability for a certain application can be derived from our information. The information given does not release the user from the obligation of own judgment and verification. It must be remembered that our products are subject to a natural process of wear and aging.