

Electric Drives
and Controls

Hydraulics

Linear Motion and
Assembly Technologies

Pneumatics

Service

Rexroth
Bosch Group

Magnetic extractor Type MGS

RE 50407/09.09

1/2

Technical information

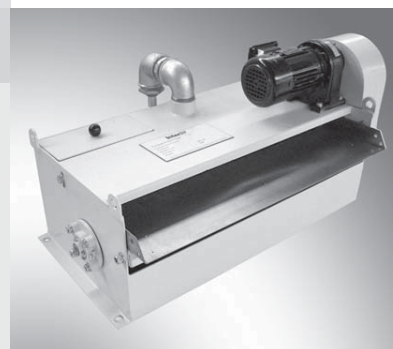


Table of contents

Contents	Page
Introduction	2
Standard construction	2
Application	2
Functions	2
Dimensions	2

Introduction

Standard series type C
Extraction of magnetic swarf from oils or emulsions with an output of 30 - 600 l/min.

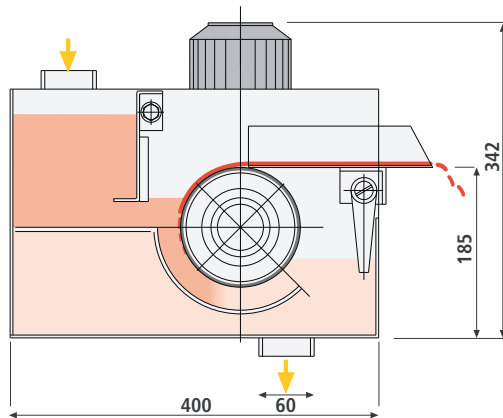
Standard construction

For flow rates up to 600 l/min

- Stable steel plate housing, optionally 1.4301, 1.4571
- Inlet chamber with adjustable stabilizing plate
- Magnetic rollers with smooth surface
- Roller bearings greased for life
- Directly flanged geared motor, 1/min, IP 44, insul. class B
- Adjustable wiping plate

For larger flow rates up to 10000 l/min

- Outfall chamber for reducing the flow speed of the fluid to be purified
- Combined standard extractors, coupled with three-part couplings
- Only 1 geared motor IP 44, insul. class B
- Integrated emergency overflow



Application

Extraction of magnetizable particles from emulsions, solutions, waters, oils up to 75 mm²/s.

Functions

The fluid to be purified enters the inlet chamber, is stabilized and passes into the flow slot around the magnetic roller. The magnetizable particles in the fluid are deposited on the magnetic plates and are continuously removed by the rotation of the roller.

The wiping plate removes the particles from the roller outside the fluid level. The low speed guarantees optimal extraction. For the finest extraction of magnetizable particles, the flow slot is reduced, adjusted to suit the specific requirements.

Dimensions (in mm)

Type MGS	Roller width	Width	Discharge width
C 15	150	226	100
C 20	200	276	150
C 25	250	326	200
C 35	350	426	300
C 50	500	576	450
C 65	650	726	600
C 75	750	826	700

© This document, as well as the data, specifications and other information set forth in it, are the exclusive property of Bosch Rexroth AG. It may not be reproduced or given to third parties without its consent. The data specified above only serve to describe the product. No statements concerning a certain condition or suitability for a certain application can be derived from our information. The information given does not release the user from the obligation of own judgment and verification. It must be remembered that our products are subject to a natural process of wear and aging.