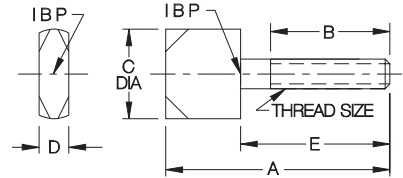
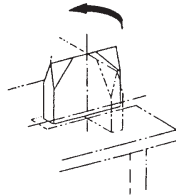
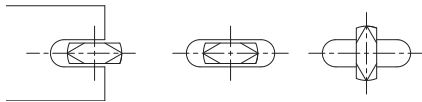


QUARTER-TURN SCREWS

12L14 STEEL, CARBURIZED-HARDENED, BLACK OXIDE FINISH



Rotate screw 90 degrees (1/4 turn) to latch. Ideal for swing-away lids and jig plates. Beveled edges allow easy insertion into a slot. Also available soft (not carburized-hardened) for customizing as desired.



Use quarter-turn screws in either open or closed slots.

USA

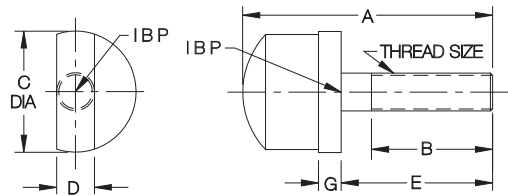
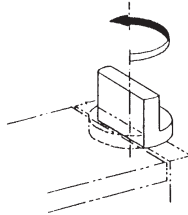
PART NO. HARDENED	PART NO. SOFT	THREAD SIZE	A	B	C DIA	D	E
CL-1-QTS	CL-10-QTS	#10-24	1-1/2	7/8	5/8	3/16	1
CL-2-QTS	CL-20-QTS	#10-32			1/2		
CL-3-QTS	CL-30-QTS	1/4-20	1-7/8	1	3/4	1/4	1-1/4
CL-4-QTS	CL-40-QTS	5/16-18	2-1/4		1	5/16	
CL-5-QTS	CL-50-QTS	3/8-16	2-1/2	1-1/4		3/8	1-1/2
CL-6-QTS	CL-60-QTS	1/2-13	2-3/4	1-1/2	1-1/4	1/2	1-3/4

METRIC

CLM-5-QTS	—	M5	1.57	.79	.63	.20	.98
CLM-6-QTS	—	M6	1.97	.98	.75	.24	1.18
CLM-8-QTS	—	M8	2.36	1.38	1.00	.31	1.57
CLM-10-QTS	—	M10	2.56		1.00	.39	
CLM-12-QTS	—	M12	2.76	1.57	1.26	.47	1.77

HALF-TURN SCREWS

12L14 STEEL, CARBURIZED-HARDENED, BLACK OXIDE FINISH



USA

PART NO. HARDENED	THREAD SIZE	A	B	C DIA	D	E	G
CL-1-HTS	#10-32	1-11/16	7/8	3/4	3/16	1	
CL-2-HTS	1/4-20	2		3/4	1/4	1-1/4	3/16
CL-3-HTS	5/16-18	2-1/16		1	5/16		
CL-4-HTS	3/8-16	2-11/16	1-1/2	1-1/16	3/8	1-3/4	1/4
CL-5-HTS	1/2-13	2-3/4		1-1/4	1/2		

METRIC

CLM-5-HTS	M5	1.69	.87	.75	.20	.98	
CLM-6-HTS	M6	1.93	.94	.75	.24	1.18	.20
CLM-8-HTS	M8	1.97		1.00	.31		
CLM-10-HTS	M10	2.72	1.54	1.06	.39	1.77	.24

Rotate screw 180 degrees (1/2 turn) to latch. Allows latching swing-away lids and jig plates without machining a slot.